



Smart EV/Moped

Model:M3

Operation Manual

Precautions

Battery and charging:

Charging is only allowed at 0°C~45°C, and discharging is only allowed at -20°C~60°C. The battery must be kept dry. It is strictly prohibited to put the battery in acidic or alkaline liquid. Rain must be avoided, and it shall be kept away from fire, heat and high temperature environment. It is strictly prohibited to reverse the battery's positive and negative poles or damage them, plug in the battery or let it suffer from short circuit. Please use the original special charger when charging. The charging must not last more than 6 hours, and the charging current does not exceed 2A. When not in use for a long time, please keep the battery in a cool and dry place, and charge it for five hours every month. Users must follow the instructions when charging, otherwise they will be at their own risk. Attention shall be paid to the type of battery to which the charger is compatible and the applicable voltage, and mixing is strictly prohibited. When charging, it shall be placed in a ventilated environment. It is strictly prohibited to charge in a residential building and in an enclosed space or in a hot environment. When charging, insert the battery first, and then supply the mains power; when fully charged, cut off the mains power first, and then unplug the battery connector. When the green light is on, the power shall be cut off in time. It is forbidden to connect the charger to the AC power supply without load for a long time without charging. During the charging process, if the indicator light is abnormal, a peculiar smell occurs, or the charger case is overheating, stop charging immediately and repair or replace the charger. During the use and storage of the charger, be careful not to let foreign matter enter, especially avoid inflow of water or other liquids, so as to avoid short circuit inside the charger. The charger should not be carried with the vehicle. If it is necessary to carry it, it shall be placed in the tool box after shock absorption treatment. Do not disassemble or replace the accessories in the charger by yourself.

Riding:

Do not use until you have read the instructions carefully to understand the performance of the product; do not lend it to anyone who does not manipulate the product. Before riding, check if the brakes are working. When braking, please apply the rear brake first, and then apply the front brake. Pay attention to the tightness of the brakes. When you find that the brakes are too loose, you can use a internal hexagonal wrench to tighten it. Note that the braking distance shall be increased when you are riding in rain or snow. Applicable age: 16 to 65 years old.

Be sure to wear a safety helmet while riding it, follow the traffic rules, and do not drive on motorized lanes and roads with many pedestrians. Please check the tire pressure before riding. The recommended tire pressure is 35~45PSI. The speed at downhill and non-brick pavement does not exceed 15km/h. Be careful not to bump the motor vigorously when it is used, and keep the

spindle lubricated.

Do not ride at more than the maximum load of the car body (maximum load: 120kg)

After use, the car cannot be parked in the building's entrance hall, evacuation stairs, or emergency exit. It must be properly parked in accordance with safety regulations.

No one-handed riding!

Disclaimer:

After riding, please place the vehicle in a place free from sunlight and rain, not in a residential building;

Check the motor and brake frequently;

Check the screws of the vehicle and the places to be tightened regularly, and tighten them regularly.

Recommended torque: (unit: kgf.cm) handlebar screws 60-80, stem screws 175-200, seat screws 175-200, and wheel screws 320-450;

The front and rear wheels of the vehicle shall be located in the center of the fork or frame;

Check the spell frequently for any scars, cracks, or excessive wear. The inner tube and the air nozzle shall be perpendicular to the hub. The cover tyre that is damaged or excessively worn needs to be replaced immediately, please ask a professional technician to replace your tyre. If your cover tyre accidentally punctures and leaks, please contact a professional technician to repair or replace it.

Maintenance and care:

For the product model, specifications or related information mentioned in this Operation Manual, the company reserves the right of modification and final interpretation; the functions of the specific model mentioned in this Operation Manual are only applicable to that specific model;

The product models, specifications, or related information mentioned in the Operation Manual may be changed without notice; without prior written permission of the company, the Operation Manual may not be copied, modified, reproduced, transmitted, or published in any form. Please read the Manual carefully before using the product, and operate in accordance with the Manual, otherwise the company will not be liable for product damage or personal or property damage caused by improper use or error.



Figure 2
(Left Side of Frame)

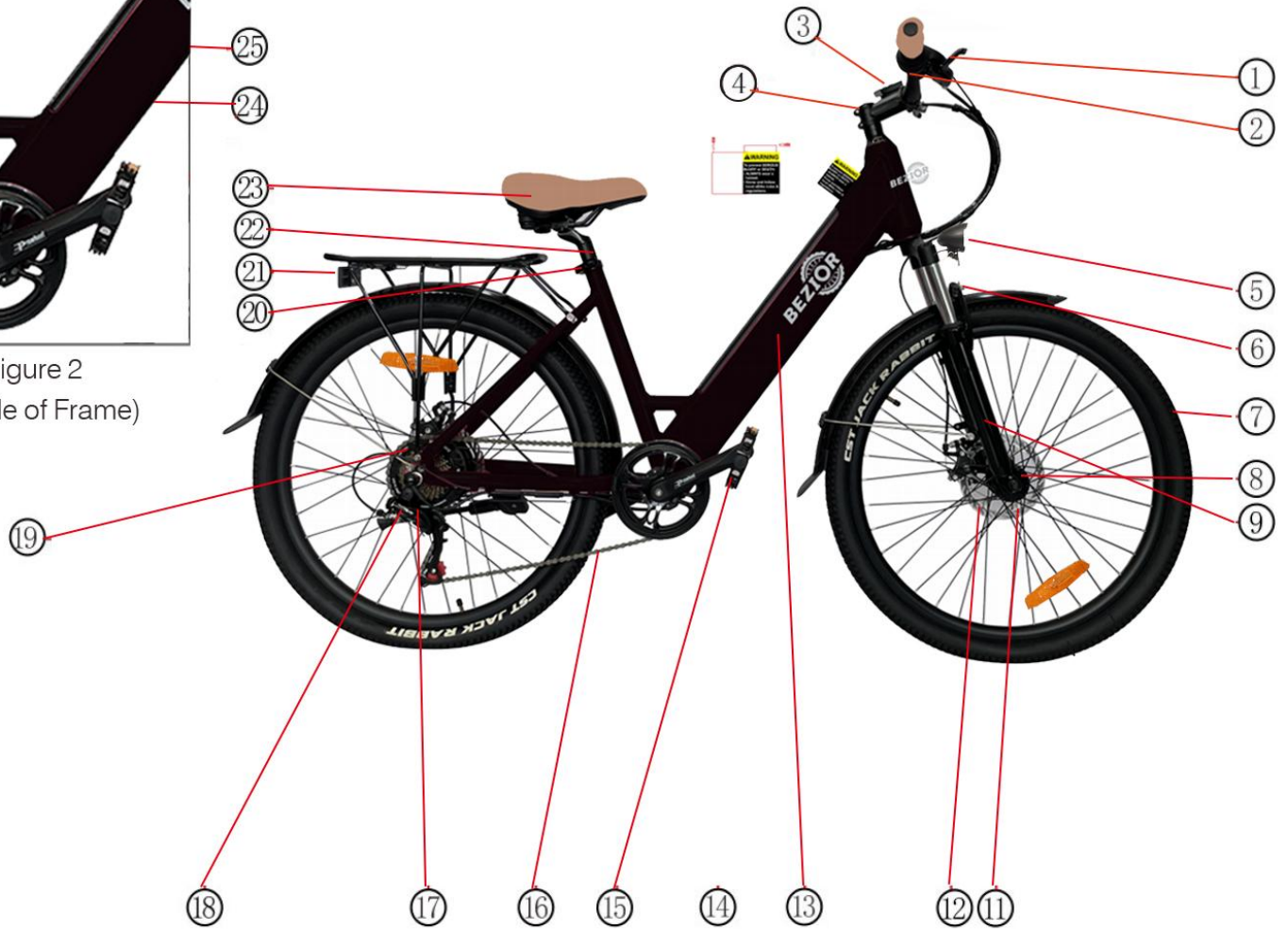


Figure 1 (Whole Vehicle Diagram)

- | | |
|--------------------------|--------------------------------------|
| ① Variable speed shifter | ⑭ Sprocket |
| ② Brake lever | ⑮ Pedal |
| ③ Dash board | ⑯ Chain |
| ④ Stem | ⑰ Flywheel |
| ⑤ Headlight | ⑱ Rear derailleur |
| ⑥ Spoke lamp | ⑲ Rear motor |
| ⑦ Tyre | ⑳ Seat tube adjustment quick release |
| ⑧ Hub | ㉑ Rear light |
| ⑨ Damping front fork | ㉒ Seat tube |
| | ㉓ Saddle |
| ⑪ Disc brake block | ㉔ Battery charging hole |
| ⑫ Disc brake | ㉕ Battery lock keyhole |
| ⑬ Lithium battery | |

Assembly Instruction:

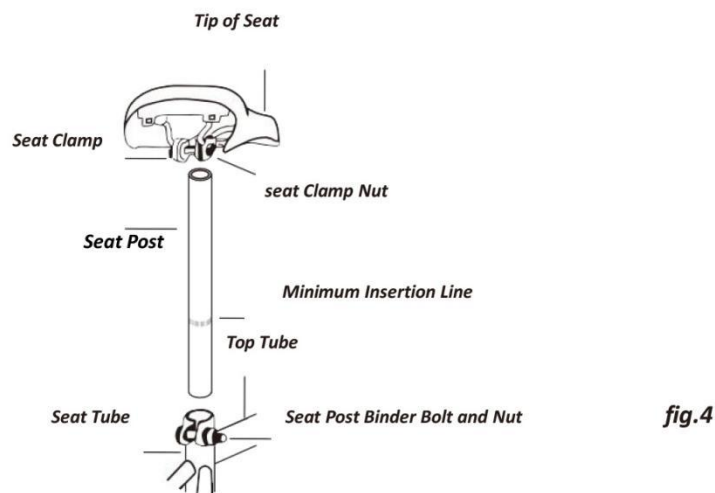
Here is some important information for electric bicycles assembly, which is very useful for your maintaining your electric bicycle, and especially helpful when you purchase our e-bikes which is partly assembled and packed in a carton.

Step 1: Preparation:

Take the electric bicycle and parts out of the carton and detach all parts that are tied to the frame. Be careful not to scratch the frame or cut the tire when removing the wrapping. And please do not rotate the handlebar either until disassembly, otherwise it may break the cables. Then carefully examine the carton for loose parts and make certain that no parts are left.

Step 2: Seat Assembly (refer to fig.4)

- 1) Loosen the seat clamp nuts(both sides)
- 2) Insert the seat post into the seat clamp. The seat post must extend at least 1/4 inch(6-7mm) above the top edge of the seat clamp.
- 3) Re-tighten the seat clamp nuts on both sides(hand tight).
- 4) Push the seat post into the seat tube of the electric bicycle frame and rotate the seat until the tip of the seat is directly above the top tube of the frame.



THE SEAT POST MUST BE INSERTED INTO THE SEAT TUBE AT A DEPTH WHERE THE MINIMUM INSERTION LINE IS NOT VISIBLE!!!

- 5) Open the seat post quick release lever(Fig. 5). Insert the seat post into the seat tube to a sufficient depth so that the minimum insertion line is no longer showing.

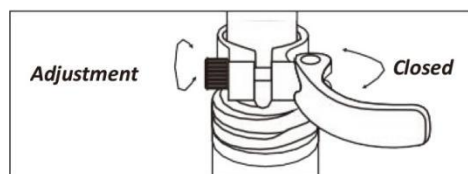


Fig 5 Opening and adjusting a quick release

6) When you are satisfied with the height of the seat post, close the seat post quick release lever. The tightness of the lever is adjusted by rotating the adjustment nut opposite the quick release lever. Turn the nut by hand to adjust the tension while holding the lever stable.

Step 3: Handlebar & Handlebar Stem Assembly(refer to fig. 6 and 7)

Expander Bolt

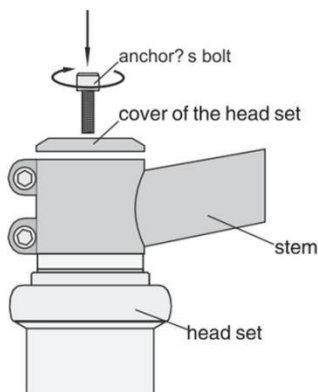


Fig.6

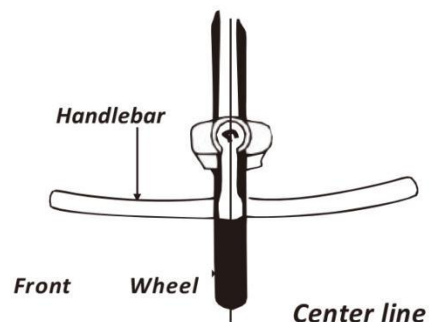


Fig.7

- As an usual situation, in our factory, the handlebar have been pre-assembled together with brake levers, shifter levers and grips. Be sure that the longer cable is fixed to the right lever (rear brake) and shorter cable to the left (front brake), or according to your local rule and practice (Note: In some area, such as UK, the cables are required to be arranged in the opposite way).
- Since your cycle may be fitted with an adjustable, a standard stem or an A-head stem(refer to fig.6), you must always check that all the bolts are tight before cycling. Based on the situation of standard handlebar stem, please follow the instruction below:

- 1) Push the handlebar stem into the fork tube (head of the frame) to the minimum height line that is marked on the side of the handlebar stem. It might be necessary to loosen the expander bolt so that the stem can slide into the fork tube, until you get your desired height of the handlebar stem.
- 2) Align the handlebar stem with the front wheel(see fig.7). Tighten securely the expander bolt with an adjustable wrench.

Note: Some models require a 6mm allen key.(Tightening torque: 18N.m or 14 foot lbs.torque)

- 3) Loosen the handlebar clamp bolt and nut from the stem.
- 4) Position the handlebar at the desired angle. Make sure that the stem is in the center of the handlebar
- 5) Tighten securely the handlebar clamp bolt (Tightening torque: 18N.m.or 14 foot. lbs)
- 6) Be sure that your handlebar and stem assemblies are properly tight before riding. The handlebar should not rotate in the stem. When you straddle and grip the front wheel between your knees, the handlebar should not be able to turn when you apply pressure horizontally. Refer to (fig. 7).

Note: Under the situation of A-head stem, you make the similar operation as the above. Compression bolt tightening torque: 23N.m or 17 foot lbs. torque; stem clamp bolt tightening torque: 12N.m or 9 foot. Lbs

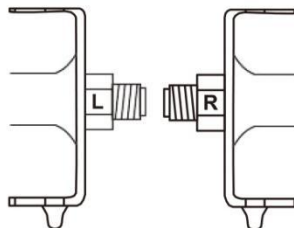
Step 4 Attaching Pedals(refer to fig. 8) :

- 1) The pedals are marked with either a “R” or “L” on the threaded end of the pedal axle.
- 2) Screw the pedal marked “R” into the right side of the crank assembly (chain side of electric bicycles). Turn the pedal (by hand) in the clockwise direction. Tighten securely with an adjustable wrench or the plate wrench special for pedals(Tightening torque: 34N.m or 26foot.lbs).
- 3) Screw the pedal marked “L” into the left side of the crank assemble. Turn the left pedal (by hand) in the counterclockwise direction. Tighten securely with an adjustable wrench or the plate wrench special for pedals(Tightening torque: 34N.m or 26foot.lbs)

PEDAL IDENTIFICATION



fig. 8 Attaching pedals

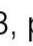


Step 5 Front wheel installation:

- 1) Cut the wrapping rope, remove the front wheel, remove the front fork protection lever and the front wheel protection cover.
- 2) Make sure that the front wheel is in line with the rear wheel, then start installation. First pull the wheel upwards, put the disc brake pad into the front brake caliper, and then use 15 wrench to tighter the front hub fixing screw.
- 3) Adjust the adjusting screw of the disc brake to make the disc brake rotor without obvious friction



Function introduction:

- 1.Charging: Referring to Figure 2, on the left side of the frame, you can see the charging hole of battery; connect the charger to start charging; when the battery capacity is displayed to be full, and the charger indicator light changes from red to yellow-green, it means the battery is fully charged.
- 2.Turn on: Referring to Figure 3, press and hold the  key to turn on/off the power.
- 3.Battery indicator: The instrument panel lights up after power-on. The battery is displayed in four grids, corresponding to high, medium and low battery.
- 4.Headlight: Referring to Figure 3, press and hold the "+" key to turn on/off the headlight.
- 5.Start-up model: power riding. Step on the vehicle sprocket, and start the electric power automatically after a certain speed is gained. If no power is needed, turn off the power or the battery.
- 6.Speed change: Referring to Figure 4, turn the speed change shifter while the vehicle is moving to achieve speed change from gear 1 to gear 7.

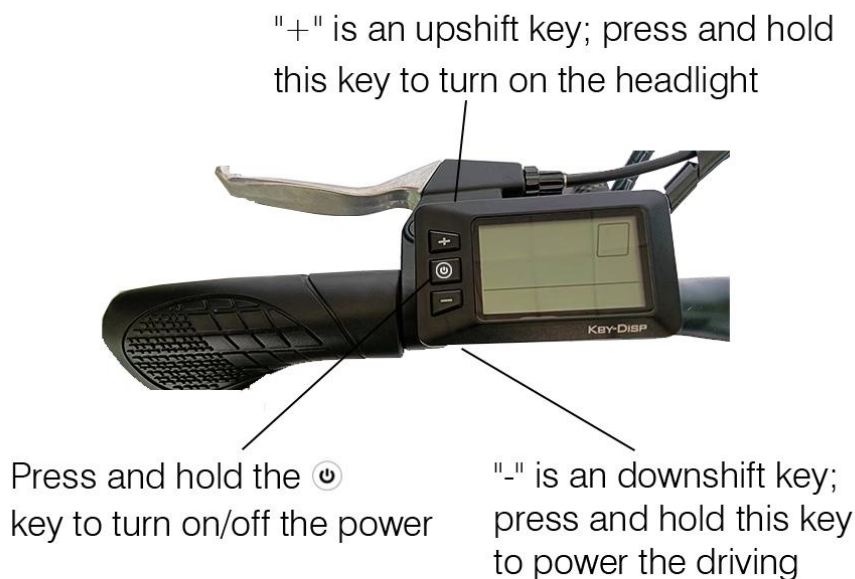


Figure 3 (left handlebar)

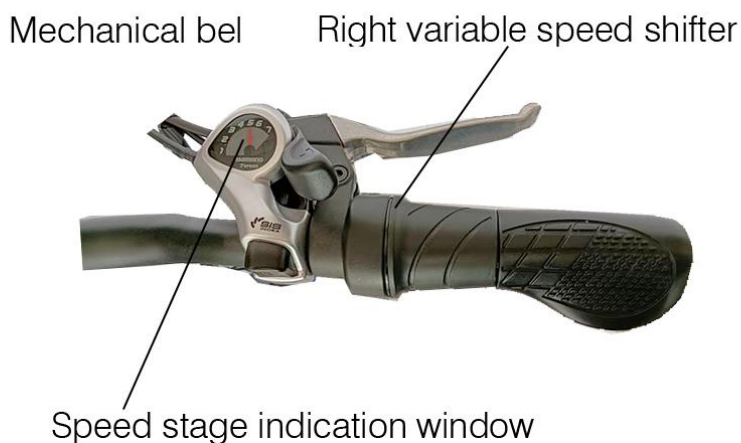


Figure 4 (right handlebar)

Remove the battery

1. Insert the key into lockhole by left hand, press it to the bottom, rotate it to the left in position, and keep still;
2. In the meantime, grasp the handle of battery by right hand to pull the battery out.



Press this button on the battery box to display the battery capacity after the indicator light is lightened. More indicator lights lightened shows more battery capacity.

Battery charging hole



This is the state after the battery is pulled out.
The battery can be taken out and charged separately

Product Description and Characteristics

Part description



+ Button

 Power button

- Button

 Battery level indicator bar

 Maximum and Average speed

 Pedal assist (PAS) level indicator

 Mile and kilometer indicator



<https://www.bezior.com>

Email: support@bezior.com

[https://www.youtube.com/channel/
UC8qUD7t20-B_inEKzy8fg7w](https://www.youtube.com/channel/UC8qUD7t20-B_inEKzy8fg7w)