

GOLDACRES



50-800L traymounted sprayers

goldacres.com.au/traymount



Goldacres traymounted range

The Goldacres name has been associated with some of the best broadacre spray equipment produced in Australia for over 40 years, that knowledge has now been transferred over to the traymounted sprayer range.

All Goldacres traymounted sprayers have been designed and manufactured in Australia using only the best components from both local and reputable leading international suppliers. The following pages showcase the range which is broken into four main categories.

1. Traymounted sprayers with a 12 volt pump.
2. Traymounted sprayers with petrol engine driven pump with manual wind hose reels.
3. Traymounted sprayers with petrol driven engine pump with auto rewind Pro-Reels®.
4. Accessories and options.

Traymounts with a 12 volt pump



pages 4-7



Traymounts with petrol engine driven pump and manual hose reel



pages 8-11

Traymounts with petrol engine driven pump and auto rewind Pro-Reel®



pages 12-19



Spotmate / ATV 50-200L



The Spotmate range is an economical choice for spot spraying around the home, garden or larger estates and parks. Built up to a standard and not down to a price, these little sprayers won't let you down.

- Australian made rotationally moulded thick, walled UV stable tank featuring smooth internal surfaces for easy decontaminating. Each tank features a deep sump area to aid draining, as well as tie down grooves over each end to help hold the unit down securely to the vehicle tray.
- Shurflo® brand of 12V diaphragm pumps feature valves and diaphragms made from chemical resistant Viton® and Santoprene materials resulting in a long service life.
- These quality pumps deliver high flow and pressure to help speed up those spraying tasks.
- Long reach spray lances feature adjustable nozzles and lock on feature for when extended periods of continuous spraying is required.
- All spray hoses are constructed using a Nitrile liner. This liner helps resist the effects of the most aggressive of chemicals from damaging the hose.
- Boom options page 22-23



50L



Specifications

Tank size	50L
Pump	12 volt Shurflo 3.8 l/min 2.8 bar (40 psi)
Spray gun	Spray lance with adjustable nozzle & 4m hose
Accessories	Battery leads with battery clips
Part No	GA4907675

Dimensions / weight

Model	L (mm)	W (mm)	H (mm)	Weight net (kg)
50L	660	400	340	7.5

100L



Specifications

Tank sizes	100L
Pump	12 volt Shurflo 6.8 l/min 7.5 bar (107 psi)
Spray gun	Spray lance with adjustable nozzle & 4m hose
Accessories	Battery leads with battery clips
Part No	GA4907680

Dimensions / weight

Model	L (mm)	W (mm)	H (mm)	Weight net (kg)
100L	750	500	500	12.5

200L



Specifications

Tank size	200L
Pump	12 volt Shurflo 6.8 l/min 7.5 bar (107 psi)
Spray gun	Spray lance with adjustable nozzle & 4m hose
Accessories	Battery leads with battery clips
Part No	GA4907685

Dimensions / weight

Model	L (mm)	W (mm)	H (mm)	Weight net (kg)
200L	1000	700	560	20.5

ATV75



Specifications

Tank size	75L
Pump	12 volt Shurflo 6.8 l/min 7.5 bar (107 psi)
Spray gun	600mm stainless steel spray lance with 4m hose
Accessories	Battery leads with battery clips
Part No	GA4905985

Dimensions / weight

Model	L (mm)	W (mm)	H (mm)	Weight net (kg)
75L	820	4870	380	12

Traymate 100-400L



The Traymate range of sprayers are designed for the professional operator looking for extra features to make the spray job easier and more convenient.

- Australian made rotationally moulded, thick wall UV stable tanks with an extra deep centre sump design. All tanks are barrel shaped which helps increase stability on rough terrain as the liquid is free to flow internally, there are no square or flat surfaces. Clear tank level sight tubes fitted to the 200 and 400L help take the guess work out of volumes. Extra large lid makes pouring in liquid or powder chemicals mess free.
- Tank cradle frames made from Australian steel have been designed to place the pump under the tank. This feature provides the pump with a positive head pressure, resulting in quicker priming and a more complete draining method than a top mounted pump. The steel frame incorporates tie down and tray bolting points.
- Shurflo® brand of 12 volt diaphragm pumps feature valves and diaphragms made from chemical resistant Viton® and Santoprene materials resulting in a long service life. These quality pumps deliver high flow and pressure to help speed up those spraying tasks. Boom ready models feature even larger pumps plus an adjustable pressure regulator for accurate flow control to a boom.
- The plumbing layout features an easy to clean suction strainer as well as a bypass tap for tank agitation. The bypass system greatly improves the consistency of the tank mix over the course of the spray job.
- All spray hoses are constructed using a Nitrile liner. This liner helps resist the effects of the most aggressive of chemicals from damaging the hose.
- High quality brass and plastic construction trigger jet gun with adjustable conejet nozzle puts precise control into the operators hand.
- Boom options available, see pages 22-23 for more information.



100L



Specifications

Tank size	100L
Pump	12 volt Shurflo 6.8 l/min 7.5 bar (107 psi)
Spray gun	Pistol grip spray gun with 5m hose
Accessories	Battery leads with battery clips
Part No	GA4900024

Dimensions / weight

Model	L (mm)	W (mm)	H (mm)	Weight net (kg)
100L	970	460	550	26

200L



Specifications

Tank sizes	200L
Pump	12 volt Shurflo 6.8 l/min 7.5 bar (107 psi)
Spray gun	Pistol grip spray gun with 5m hose
Accessories	Battery leads with battery clips
Part No	GA4900042

Dimensions / weight

Model	L (mm)	W (mm)	H (mm)	Weight net (kg)
200L	950	700	750	36

200L Boom Ready



Specifications

Tank sizes	200L
Pump	12 volt Shurflo 11.3 l/min 3.2 bar (45 psi)
Spray gun	Pistol grip spray gun with 5m hose
Fluid control	Bypass agitation fitted with a pressure regulator valve & gauge
Accessories	Battery leads with battery clips
Part No	GA5021715

Dimensions / weight

Model	L (mm)	W (mm)	H (mm)	Weight net (kg)
200L	950	700	750	36

400L Boom Ready



Specifications

Tank size	400L
Pump	12 volt Shurflo 11.3 l/min 3.2 bar (45 psi)
Spray gun	Pistol grip spray gun with 5m hose
Fluid control	Bypass agitation fitted with a pressure regulator valve & gauge
Accessories	Battery leads with battery clips
Part No	GA5021725

Dimensions / weight

Model	L (mm)	W (mm)	H (mm)	Weight net (kg)
400L	1150	900	900	56

Traymount 200 or 400L



The Traymount range with petrol driven engine and diaphragm pumps provides operators a high flow, high pressure sprayer packaged within a compact footprint. Suitable for hand or boom spraying larger areas.

- Australian made rotationally moulded, thick wall UV stable tanks with an extra deep centre sump design. All tanks are low profile oval shaped which helps rear window vision. Clear tank level sight tubes fitted help take the guess work out of volumes. Extra large lid makes pouring in liquid or powder chemicals mess free.
- A common tank cradle frame made from Australian steel has been designed to raise the tank off the tray to enable straight line access between the sump and suction filter. This feature provides the pump with a positive head pressure, resulting in quicker priming, and a more complete draining method than a top mounted pump.
- Honda GX200 pull start engine connected to a Udor 40 l/min 40 bar (580 psi) twin diaphragm pump. An adjustable pressure regulator valve is fitted to set the maximum system pressure for precise spot or boom spraying control. The control valve is also fitted with a low back pressure dump to tank feature to enable easy engine starting.
- A pump suction filter with shut off allows the operator to remove and clean the strainer even when the sprayer tank is full. Suction filter stops contaminants entering the pump and greatly reduces the chances of nozzle blockages.
- A system bypass valve for tank agitation greatly improves the consistency of the tank mix over the course of the spray job.
- All spray hoses are constructed using a Nitrile liner. This liner helps resist the effects of the most aggressive of chemicals from damaging the hose.
- Rear mounted 30m hose reel and pistol grip spray gun with adjustable nozzle.
- Boom options available, see pages 22-23 for more information.



POWERED by
HONDA™

GX
Engine
3
YEAR
WARRANTY

200L

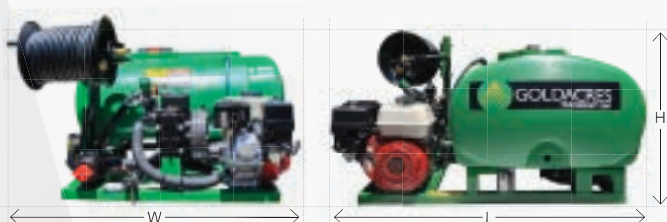


Specifications

Tank sizes	200L
Engine	Honda GX200 manual start
Pump	Udor 40 l/min 40 bar (580 psi) twin diaphragm
Controller	2 way, manual pressure adjustment with dump valve
Hose reel	30m
Tank sight tube	Standard
Spray gun	Pistol grip spay gun adjustable nozzle
Suction filter	50 mesh with shut-off
Chassis	Fully welded RHS
Part No	GA4914015

Dimensions / weight

Model	L (mm)	W (mm)	H (mm)
200L	1103	1030	685



400L

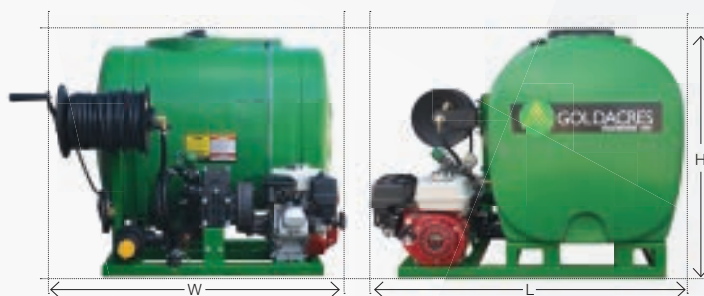


Specifications

Tank sizes	400L
Engine	Honda GX200 manual start
Pump	Udor 40 l/min 40 bar (580 psi) twin diaphragm
Controller	2 way, manual pressure adjustment with dump valve
Hose reel	30m
Tank sight tube	Standard
Spray gun	Pistol grip spay gun adjustable nozzle
Suction filter	50 mesh with shut-off
Chassis	Fully welded RHS
Part No	GA4914025

Dimensions / weight

Model	L (mm)	W (mm)	H (mm)
400L	1103	1030	885



T3 Traymount 300L



Specifically designed to suit RTV's, the T3 is your personal go anywhere weed terminator.

Central to the design is the purpose built tank featuring low centre of gravity, 300L capacity, compact dimensions to suit most RTV's and looks stylish. The unit features a Honda driven diaphragm pump, manual wind hose reel, suction filter and adjustable pressure regulator.

- Australian made rotationally moulded thick walled UV stable 300L tank with low centre of gravity for stability. Deep sump for complete draining, integrated tie down points to strap to the RTV tray, large hinged lid for easy filling and cleaning and a tank level sight tube at the front left which is visible from the drivers seat.
- Honda GX120 pull start engine connected to a Udor 20 l/min 20 bar (290 psi) twin diaphragm pump. An adjustable pressure regulator valve is fitted to set the maximum system pressure for precise spot or boom

spraying control. The control valve is also fitted with a low back pressure dump to tank feature to enable easy engine starting.

- A pump suction filter with shut off allows the operator to remove and clean the strainer even when the sprayer tank is full. Suction filter stops contaminants entering the pump and greatly reduces the chances of nozzle blockages.
- Rear mounted 30m hose reel and pistol grip spray gun with adjustable nozzle.
- Tank mounted on a steel frame and painted using the Goldacres four stage paint system. (grit blast, undercoat, top coat and high temperature bake).
- Boom options available, see pages 22-23 for more information.



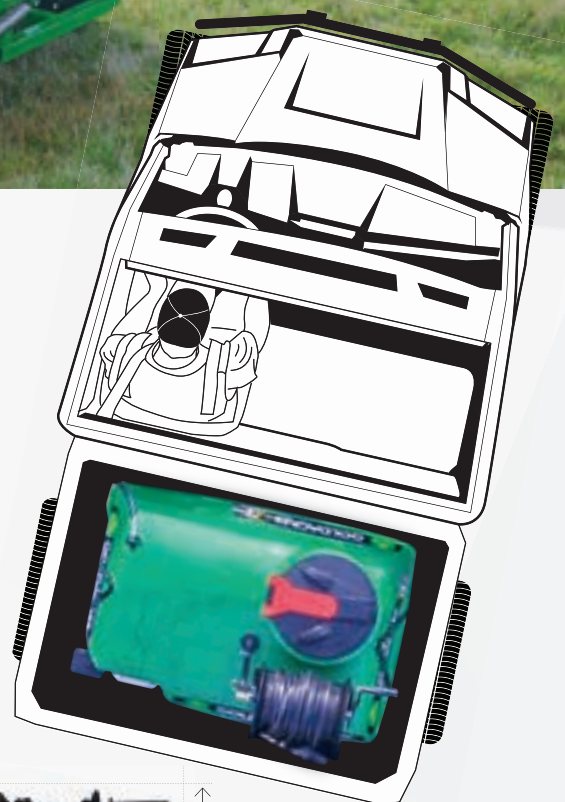
Optional towbar boom ref page 22-23

Specifications

Tank sizes	300L
Engine	Honda GX120 pull start
Pump	Udor 20 l/min 20 bar (290 psi)
Controller	Manual 2 way, manual pressure adjustment with dump valve
Hose length	30m
Tank sight tube	Standard
Spray gun	Pistol grip gun adjustable nozzle
Suction filter	50 mesh with shut-off
Chassis	Fully welded RHS
Part No	GA6500008

Dimensions / weight

Model	L (mm)	W (mm)	H (mm)	Weight net (kg)
300L	765	1168	853	100



Pro-Reel® stand alone

Transform an existing tank and pump into a weed killing weapon. Simply add a Pro-Reel® to your outfit and take the work out of spraying.

The Pro-Reel® is a remote controlled automatic rewind hose reel that features the “silent drive” system with a powerful 12 volt electric motor combined with a 12.5:1 reduction belt drive system. This layout eliminates the need for clutches or lubrication and allows the reel to be rewound without the spray pump operating. The belt drive also acts as a safety mechanism, providing drive slip in case of overloading such as the hose being caught around a tree. The silent drive system provides the operator with years of maintenance free operation. The reel comes in two sizes, 100 and 150m hose lengths and features a two channel hand held remote control unit with a range of 200m*.

*Clear line of sight



Construction

Reel side plates and large drive pulley are made from high density UV stable poly material. Light, strong and impervious to corrosion.

The main frame is a combination of round and square section mild steel with a high-flow stainless steel shaft and stainless external hardware. Goldacres four paint system (grit blast, high build primer, topcoat & high temperature baked finish) ensures a long lasting finish.



Gun not included
refer to page 20 for options



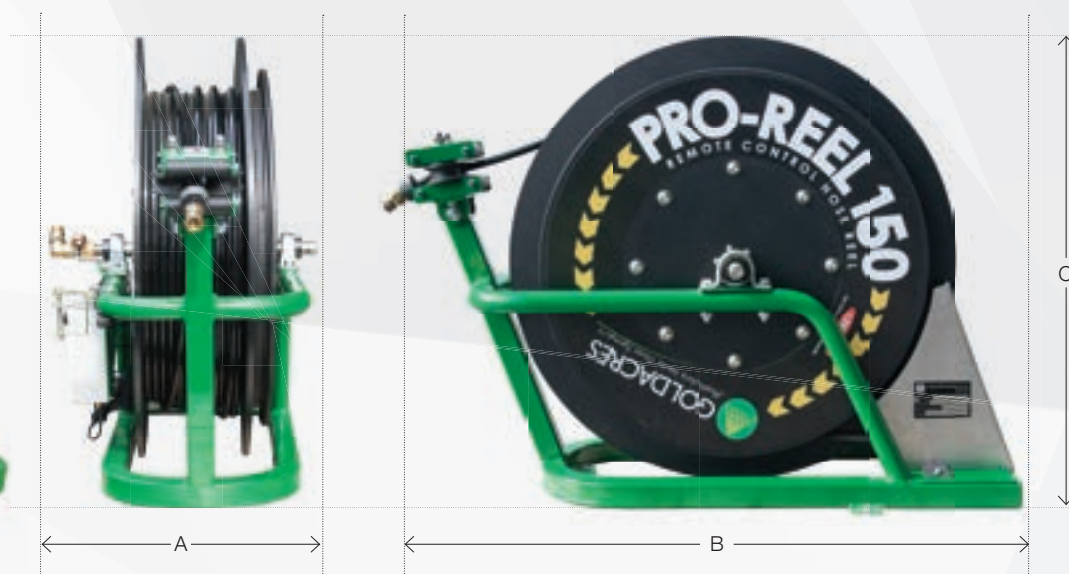
Remote rewinding

A powerful Australian made two channel hand held UHF remote control unit with a range of 200m*. The hand held unit can control both the rewind function of the reel and the spray pump engine shutdown.

An additional control at the base unit also can be used to wind the reel in case of a damaged or misplaced remote.



Dimensions	Part No	A (mm)	B (mm)	C (mm)	Part No
100m reel	GA4904584	450	950	680	GA4904584
150m reel	GA4906985	450	950	730	GA4906985



Spray hose

The Pro-Reel® uses tough anti-kink Nylon 12 grade hose. With an outside diameter of 12mm enables 100 or 150 metres of hose to neatly fit to the reel while providing minimal pressure loss.



12 volt drive system

The Pro-Reel® “silent drive” uses a powerful 12 volt electric motor combined with a 12.5:1 reduction belt drive system eliminating the need for clutches or lubrication and allows the reel to be rewound without the spray pump operating. The belt drive also acts as a safety mechanism, providing drive slip in case of overloading such as the hose being caught around a tree. The silent drive system provides the operator with years of maintenance free operation.

RTV300



Specifically designed to suit RTV's, the RTV300 is for operators requiring high pressure, high flow and the ability to cover large areas without the need to move the vehicle frequently.

- Australian made rotationally moulded, thick walled UV stable 300L tank. The forward tank location places the bulk of the weight as far forward as possible in the tray of the RTV to help share the load across all four wheels. The location also allows optimum placement of the Pro-Reel®, petrol driven engine and diaphragm pump. Clear tank level sight tube takes the guess work out of volumes and the large access lid makes pouring in liquid or powder chemicals mess free.
- 100m Pro-Reel® electric rewind hose reel fitted to the rear of the unit for easy access. Turbo 400 gunjet features easy thumb control adjustment of the spray pattern.
- Honda GX200 pull start engine connected to a Udor 40 l/min 40 bar (580 psi) twin diaphragm pump. An adjustable pressure regulator valve is fitted to set the maximum system pressure for precise spot or boom spraying control. The control valve is also fitted with a low back pressure dump to tank feature to enable easy engine starting.
- A pump suction filter with shut off allows the operator to remove and clean the strainer even when the sprayer tank is full. Suction filter stops contaminants entering the pump & greatly reduces the chances of nozzle blockages.
- A system bypass valve for tank agitation greatly improves the consistency of the tank mix over the course of the spray job.
- All hydraulic pressure hoses (not reel) are wire braided to handle high pressure and provide chemical resistance.
- Frame work all made using Australian steel and painted using the Goldacres four stage paint system (grit blast, undercoat, top coat and high temperature bake).
- Boom options available, see pages 22-23 for more information. All Pro-Reel® Traymounted sprayers come with a battery cable kit.



Specifications - Standard

Hose length	100m
Tank sizes	300L
Engine	Honda GX200 pull start
Pump	Udor 40 l/min 40 bar (580 psi) twin diaphragm
Controller	Manual 3 way, manual pressure adjustment with dump valve
Hose reel	100m Pro-Reel® remote rewind
Remote shutoff	Remote engine and pump shut-off 200m range
Tank sight tube	Standard
Spray gun	Turbo 400, adjustable spray pattern, 2.5mm nozzle
Suction filter	50 mesh with shut-off
Chassis	Fully welded RHS / tubular construction
Part No	GA4908090

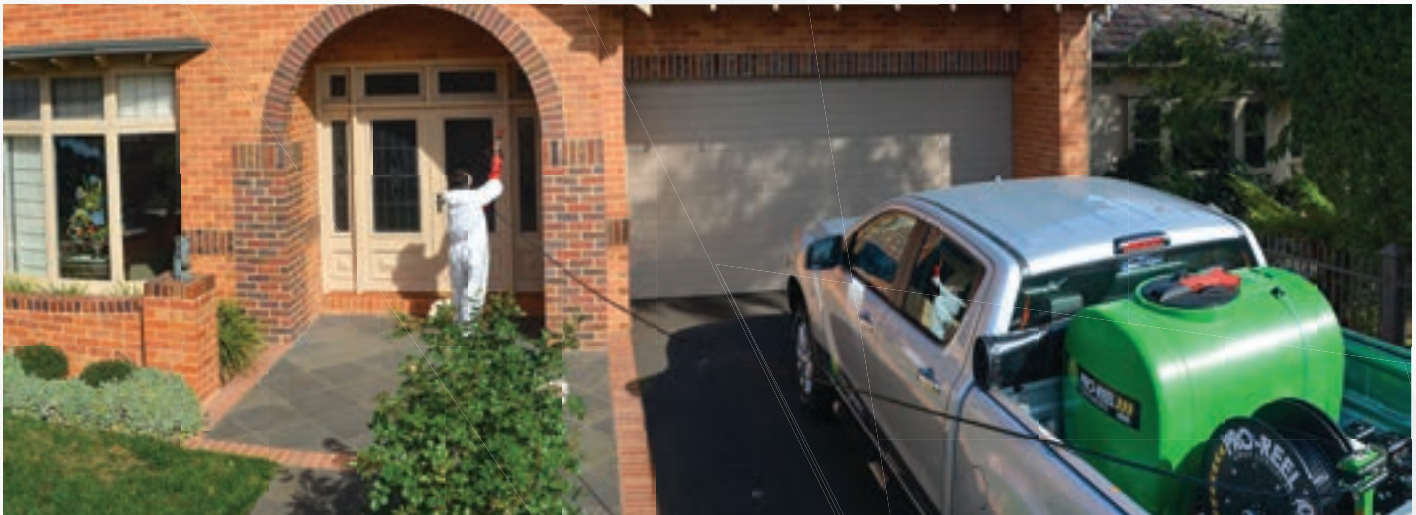
Dimensions / weight

Model	L (mm)	W (mm)	H (mm)	Weight net (kg)
300L	1149	1346	1010	160





Traymount 400 & 600L with single



Expand the versatility of the traymount with the added benefits of an auto wind hose reel in either 100 or 150m hose lengths. With the Pro-Reel® operators can spray into delicate or in accessible areas while still leaving the vehicle on firm level ground.

- Australian made rotationally moulded thick wall UV stable tanks with an extra deep centre sump design. Clear tank level sight tubes fitted help take the guess work out of volumes. Extra large lid makes pouring in liquid or powder chemicals mess free.
- Single auto wind Pro-Reel® in either 100 or 150m. Turbo 400 gunjet features easy thumb control adjustment of the spray pattern.
- Tank cradle frame made from Australian steel has been designed to raise the tank off the tray to enable straight line access between the sump and suction filter. This feature provides the pump with a positive head pressure, resulting in quicker priming, and a more complete draining method than a top mounted pump. Painted using the Goldacres four stage paint system. (grit blast, undercoat, top coat and high temperature bake)
- Honda GX200 pull start engine connected to a Udor 40 l/min 40 bar (580 psi) twin diaphragm pump. An adjustable pressure regulator valve is fitted to set the maximum system pressure for precise spot or boom spraying control. The control valve is also fitted with a low back pressure dump to tank feature to enable easy engine starting.
- A pump suction filter with shut off allows the operator to remove and clean the strainer even when the sprayer tank is full. Suction filter stops contaminants entering the pump and greatly reduces the chances of nozzle blockages.
- A system bypass valve for tank agitation greatly improves the consistency of the tank mix over the course of the spray job.
- All hydraulic pressure hoses (not reel) are wire braided to handle high pressure and provide chemical resistance.
- Boom options available, see pages 22-23 for more information. All Pro-Reel® Traymounted sprayers come with a battery cable kit.

Auto rewind Pro-Reel®

400L



600L

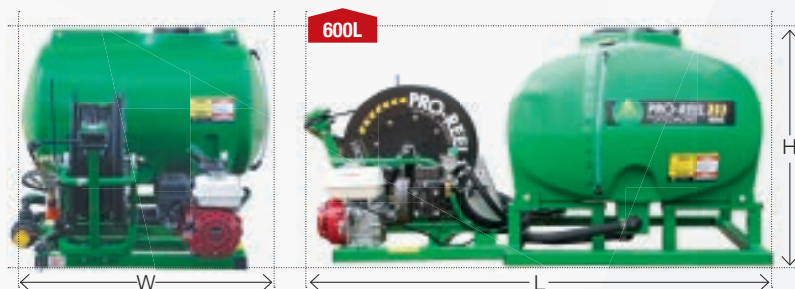
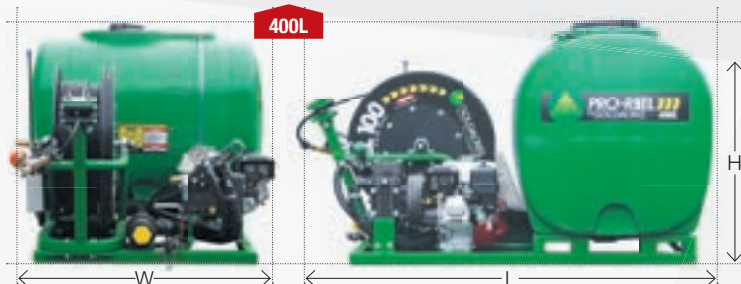


Specifications

Tank sizes	400 or 600L
Engine	Honda GX200 manual start
Pump	Udor 40 l/min 40 bar (580 psi) twin diaphragm
Controller	Manual 3 way, manual pressure adjustment with dump valve
Hose reel	100m Pro-Reel® remote rewind (150m optional)
Remote shutoff	Remote engine and pump shut-off 200m range
Tank sight tube	Standard
Spray gun	Turbo 400, adjustable spray pattern, 2.5mm nozzle
Suction filter	50 mesh with shut-off
Chassis	Fully welded RHS / tubular construction
Nozzle sizes	1.5, 2.0, 2.5, 3.0 and 3.5mm (2.5mm standard)
Part No	400L - GA4914045 (single 100m)* 600L - GA4914055 (single 100m)*

Dimensions

Model	L (mm)	W (mm)	H (mm)
400L	1390	1030	885
600L	2087	1400	835



*Talk to your Goldacres dealer about additional options



Pro-Reel® twin traymount 600 or



Double your output with the Pro-Reel® twin traymount range of sprayers.

All the same great features as the single Pro-Reel® models but with twin 100 or 150m reels. Each Pro-Reel® can be operated independently of each other allowing operators to concentrate at the job at hand.

- Australian made rotationally moulded, thick wall UV stable tanks with an extra deep centre sump design. Clear tank level sight tubes fitted help take the guess work out of volumes. Extra large lid makes pouring in liquid or powder chemicals mess free.
- Twin auto wind Pro-Reels® in either 100 or 150m. Turbo 400 gunjet features easy thumb control adjustment of the spray pattern.
- Tank cradle frame made from Australian steel has been designed to raise the tank off the tray to enable straight line access between the sump and suction filter. This feature provides the pump with a positive head pressure, resulting in quicker priming, and a more complete draining method than a top mounted pump. Painted using the Goldacres four stage paint system. (grit blast, undercoat, top coat and high temperature bake)
- Honda GX200 pull start engine connected to a Udor 40 l/min 40 bar (580 psi) twin diaphragm pump. An adjustable pressure regulator valve is fitted to set the maximum system pressure for precise spot or boom spraying control. The control valve is also fitted with a low back pressure dump back to tank feature to enable easy engine starting.
- A pump suction filter with shut off allows the operator to remove and clean the strainer even when the sprayer tank is full. Suction filter stops contaminants entering the pump and greatly reduces the chances of nozzle blockages.
- A system bypass valve for tank agitation greatly improves the consistency of the tank mix over the course of the spray job.
- All hydraulic pressure hoses (not reel) are wire braided to handle high pressure and provide chemical resistance.
- 30L hand wash tank as standard.
- Boom options available, see pages 22-23 for more information. All Pro-Reel® traymounted sprayers come with a battery cable kit.

800L



600L

800L



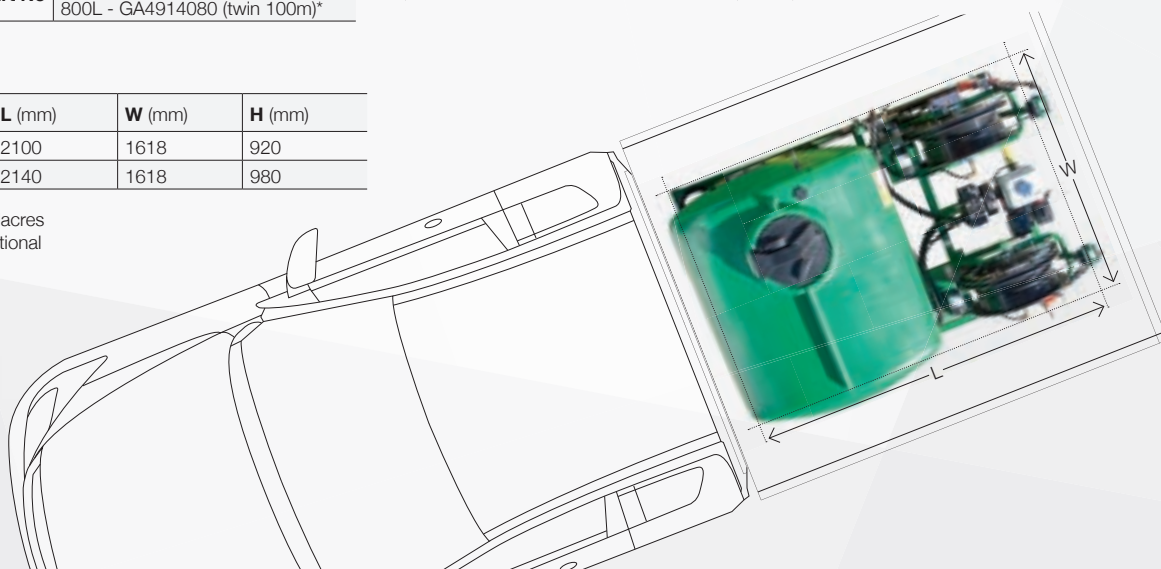
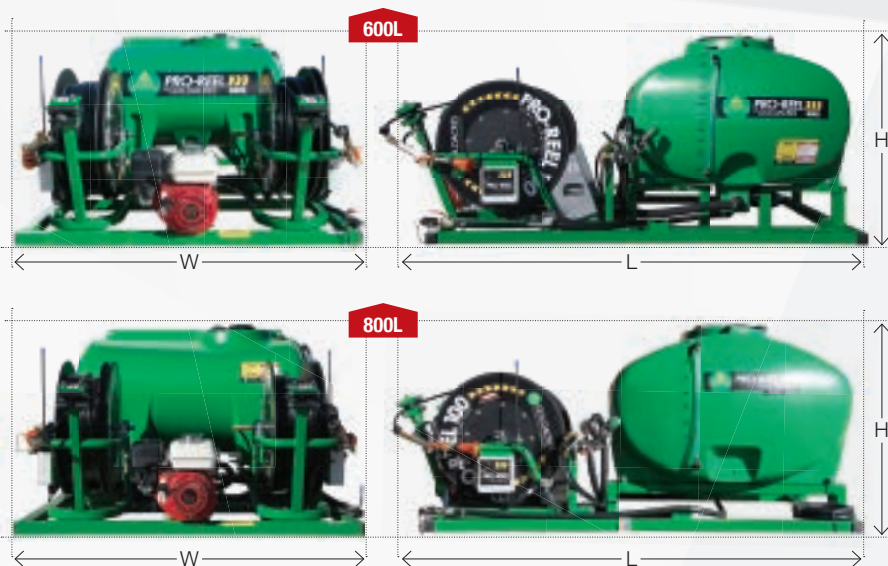
Specifications

Tank sizes	600 or 800L
Engine	Honda GX200 manual start
Pump	Udor 40 l/min 40 bar (580 psi) twin diaphragm
Controller	Manual 3 way, manual pressure adjustment with dump valve
Hose reel	2 x 100m Pro-Reel® remote rewind (150m optional)
Remote shutoff	Remote engine and pump shut-off 200m range
Tank sight tube	Standard
Spray gun	Turbo 400, adjustable spray pattern, 2.5mm nozzle
Suction filter	50 mesh with shut-off
Chassis	Fully welded RHS / tubular construction
Nozzle sizes	1.5, 2.0, 2.5, 3.0 and 3.5mm (2.5mm standard)
Part No	600L - GA4914075 (twin 100m)* 800L - GA4914080 (twin 100m)*

Dimensions

Model	L (mm)	W (mm)	H (mm)
600L	2100	1618	920
800L	2140	1618	980

*Talk to your Goldacres dealer about additional options.



Accessories & options

Accessories

Looking for something a little more customised to your needs? Choose from a range of accessories, or let your dealer configure your next sprayer from the many options.

Teejet AA43 gunjet



TeeJet gunjet with brass 130mm extension fitted with size 10 nozzle GA5077248

Teejet AA30L gunjet



Teejet gunjet with adjustable size 18 nozzle & fittings GA4900546

Teejet AA30L gun extensions

Part No	Description
GA5077145	8" brass extension
GA5077139	12" brass extension
GA5077140	18" brass extension
GA5077141	24" brass extension
GA5077142	30" brass extension
GA5077144	36" brass extension
GA5077145	48" brass extension

Spray shield



Spray shield to suit AA30L gunjet with extensions GA5075639

Turbo 400 gun



Turbo 400 gunjet GA5023475

Turbo 400 gun nozzles

Part No	Nozzle diameter	Max flow rate l/min @ 40 bar
GA2000108	1.5mm	9.29
GA2000109	2.0mm	16.05
GA0100018	2.5mm	22.62
GA5071875	3.0mm	28.52
GA5023477	3.5mm	34.88

Boomless nozzle mounting bar



Ideal for mounting boomless nozzles kits. Used in conjunction with boom mount page 23

Remote boom shut off



Solenoid kit for remote boom shut off GA5023760

Fork feet



300-400L models 85mm H
GA1100029 – 600-1000L models
100mm H GA1100030

Manual hose reel



15m manual wind hose reel and bracket to suit 200L traymate GA5021770

Nitrile hose



13mm nitrile line hose comes in 20m rolls. GA2000212

Battery extension kits

Battery extension kits comes in versions:

GA3000212 Pro-Reel single reel traymount sprayer includes fuse, battery terminal, anderson plug, 5m long.

GA3000213 Pro-Reel twin reel traymount sprayer includes fuse, battery terminal, dual anderson plugs, 5m long.

Options

(Talk to your local Goldacres dealer about these options and many more on your next sprayer).

Honda electric start engine



Honda electric start engine using carrier vehicle battery.

Subaru electric start engine



Subaru electric start engine with own battery.

Pro-Reel



150m Pro-Reels

Venturi probe



Venturi probes which allow the operator to draw in neat chemicals.



Boomless nozzles are used for spraying areas not easily accessed with a conventional spray boom.

Choose from single brass, stainless steel, nylon nozzles or the double sided BoomJet® suited for large capacity 12 volt or diaphragm pumps.

Boomless nozzles can spray widths from 3 to 19 metres and can be supplied as individual nozzles or as a complete kit including mounting bracket and fittings.

Nozzle information								Complete kits	
Nozzles	Spray pattern	Description	Nozzle Part No	Pressure bar	Flow l/min	Spray width (m)*	l/ha @10 km/h	Kit Part No	Mounting Kit inc nozzle
		#2 - 1/4" F/NPT Brass nozzle	GA8100658	2	3.2	6.7	13.5	GA4908330	
				3	3.85	7	15		
				4	4.5	7.6	16.5		
		#5 - 1/2" F/NPT Brass nozzle	GA8100659	2	6.5	13	27	GA4908335	
				3	7.75	14	31		
				4	9	15	34		
		#10 - 1/2" F/NPT Brass nozzle	GA8100660	2	14	15	51	GA4908340	
				3	16.5	15.5	59		
				4	19	16	67		
		#20 - 3/4" F/NPT Brass nozzle	GA8100661	2	19	16	65	GA4908345	
				3	23	17	76		
				4	27	18	85		
		Left 1/4" BSP XP10 Orange	GA8100339	2	3.2	3.4	57	GA5021550	
				4	4.5	4.4	62		
		Right 1/4" BSP XP10 Orange	GA8100340	2	3.2	3.4	57	GA5024605	
				4	4.5	4.4	62		
		Double sided 2 x 1/4"XP10	GA8100339 GA8100340	2	6.4	6.8	57	GA4932800	
				4	9.1	8.8	62		
		TF-VS4 floodjet White	GA8100081	2	2.6	3.2	48	GA4907309	
				3	3.1	3.2	6		
		BoomJet 5880 3/4" 2 TOC20		1.5	24	14.3	105	GA8100383	
				2	28	15.2	114		
				2.5	31	15.8	122		
		BoomJet 5880 3/4" 2 TOC40		1.5	47	17.1	173	GA8100384	
				2	55	18.2	188		
				2.5	61	19.2	199		

Booms

2m Towbar & 2m Roadside towbar

Designed to slide into a Hayman Reese style towbar mount these lightweight aluminum booms are ideal for use on RTV's and utilities. Each side folds vertically for compact storage when not in use.

Fully adjustable both vertically and horizontally to suit just about every vehicle. Spray coverage of 2m wide.

Roadside version can spray an extra 4.8m wide (mounted 1.22m at 2.76 bar).



2m Towbar specifications

Mount	Hayman Reese style 50 x 50mm
Construction	Lightweight aluminum
Nozzles	4 x IDK120-02 (yellow)
Nozzle body	TeeJet non-drip
Adjustability	Adjustable boom height (500mm)
	Adjustable towbar length (5 x 90mm increments)
Fittings	3m of 12mm hose and clamps
Weight	6 kg net
Part No	GA4908615

2m roadside towbar specifications

Mount	Hayman Reese style 50 x 50mm
Construction	Lightweight aluminum
Nozzles	4 x IDK120-02 (yellow)
Fenceline jet	Single sided height & angle adjustable with Hypro boom X tender size 20 nozzle
Nozzle body	TeeJet non-drip
Adjustability	Adjustable boom height (500mm)
	Adjustable towbar length (5 x 90mm increments)
Fittings	3m of 12mm hose and clamps
Weight	7.3 kg net
Part No	GA4908645

3m folding

Vertical folding full aluminum boom. Can be mounted to any vehicle using the supplied mounting hardware or optional boom mount.



Specifications

Construction	Lightweight aluminum
Nozzles	6 x IDK120-02 (yellow)
Nozzle bodies	Mounted to stainless steel brackets behind the boom for added protection. TeeJet non-drip.
Fittings	Supplied with u bolts and nuts for mounting to your vehicle
Weight	6 kg net
Part No	GA4900093

4m folding

Crossfold design using aluminum outer wings to reduce overall weight. Crossfold design acts as a breakaway feature in the event of a collision with an object.



Specifications

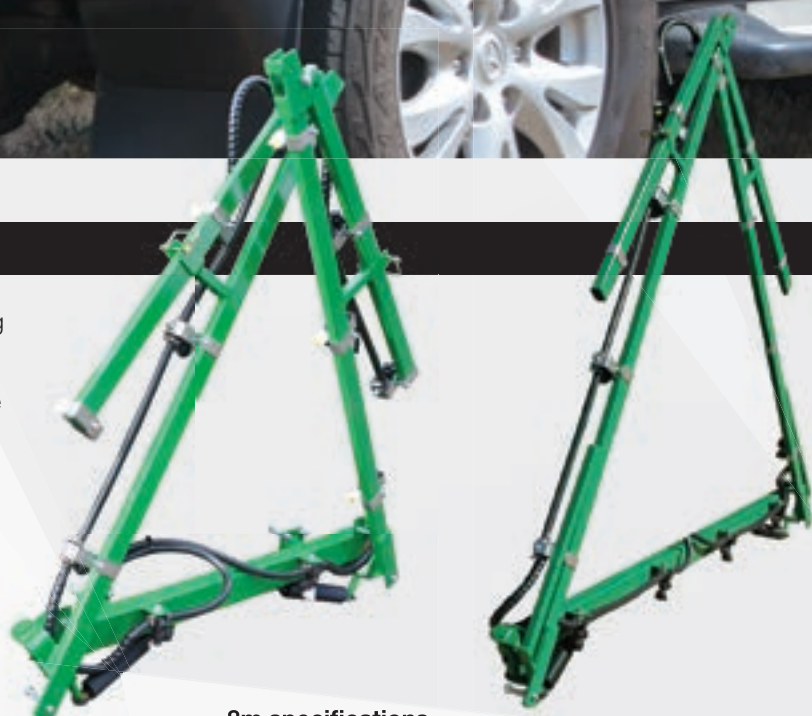
Construction	Mild steel and aluminum
Nozzles	8 x IDK120-02 (yellow)
Nozzle bodies	Mounted to stainless steel brackets behind the boom for added protection. TeeJet non-drip.
Fittings	Supplied with u bolts and nuts for mounting to your vehicle or optional boom mount frame
Weight	19 kg net
Part No	GA4900096



6m & 8m folding

Constructed from full mild steel and finished using the Goldacres four stage paint process for the ultimate corrosion resistance. Outer wings feature flip over end section which reduces the overall folded width.

Crossfold design acts as a breakaway feature in the event of a collision with an object.



6m specifications

Construction	Mild steel
Nozzles	12 x IDK120-02 (yellow)
Nozzle bodies	Mounted to stainless steel brackets behind the boom for added protection. TeeJet non-drip.
Fittings	Supplied with u bolts and nuts for mounting to your vehicle or optional boom mount frame
Weight	37 kg net
Part No	GA4907140

8m specifications

Construction	Mild steel
Nozzles	16 x IDK120-02 (yellow)
Nozzle bodies	Mounted to stainless steel brackets behind the boom for added protection. TeeJet non-drip.
Fittings	Supplied with u bolts and nuts for mounting to your vehicle or optional boom mount frame
Weight	45 kg net
Part No	GA4900105-MF-NS

Boom mount



Boom mount shown with 4m manual folding boom

- Mount small booms from 3 to 8 metres
 - 50mm RHS towbar insert mount
- GA4905835

Goldacres Trading Pty Ltd

1-3 Morang Crescent, Mitchell Park 3355

P: 03 5342 6399 - F: 03 5342 6308

goldacres.com.au

The policy of Goldacres is one of continuous development and improvement. Goldacres reserve the right to alter any specifications, designs and prices of the range shown without notice and without incurring any obligation regarding such changes. The pictures and information shown or referred to in this publication are a general guide only. Should you purchase the items from this publication the publication does not form part of the contractual arrangements with Goldacres. The purchase of any item of equipment is subject to the Goldacres Terms and Conditions of sale. All weights are shown unladen, please refer to vehicle carrying specifications to ensure sufficient capacities. 06/19 GA8700882-R3

