



AUSSIE QUIK PRIME PETROL DRIVE GUSHERS

Aussie gushers (transfer pumps) are available in a range of sizes from 2" to 6" inlet/outlet. They are designed to be **ultra reliable**, and have applications in the transfer of high volumes of liquid at relatively low pressures.

Pumps in the range offer flows of up to 2900 litres per minute, (QP602) with heads of up to 33 metres.

Features

- Five year pump warranty
- Fast self priming from 8m
- Cast iron open impeller
- Replaceable flanged suction port
- Full roll frame with anti vibration mounts standard
- Genuine Honda engines used with all models
- Exceptional efficiencies
- Pump body components made from high grade marine aluminium
- Optional Viton seal kit

Aussie gushers feature big open cast iron impellers capable of pumping some solids in suspension.

Driven by top quality, four stroke Honda petrol engines that feature oil alert and low oil shutdown. Only genuine Honda engines are used, backed by a 3 year Honda GX engine warranty.

Benefits

- » Great quality ... use with confidence
- » Ready to pump in minimum amount of time
- » Pass small solids in suspension, long trouble free wear life
- » Easily replaced if thread damaged, easy to service check valve without dismantling pump
- » Protects pump, facilitates transport on site
- » Established service networks throughout the world
- » Transfers more water per litre of fuel
- » Resists corrosion, provides long life
- » Permits pumping of diesel fuel or some ag chemicals



QP402/GX240



Applications:

- High volume water transfer
- Fast fill tanker applications
- Flood irrigation
- Construction site dewatering
- Dust suppression

Other configurations:

- Diesel drive (Yanmar, Kubota & Hatz)
- Hydraulic drive

NOTE: Aussie stock codes for QP pumps are determined by using the pump & engine model, for example QP303/GX200E is the 6.5HP Honda, electric start version of the QP303

Specifications

Model	Engine	Type	Engine model	HP	Max Head (m)	Max Flow (lpm)	Suction port	Discharge port	Self primes to (m)	Weight (kg)
NEW QP-2 (replaces QP207)	Honda	4 Stroke Petrol	GX120	4	30	600	2"	2"	7.2	24
QP209	Honda	4 Stroke Petrol	GX160 or GX200(E)	5.5, 6.5	33	800	2"	2"	7.6	28
QP303	Honda	4 Stroke Petrol	GX160 or GX200(E)	5.5, 6.5	32	1000	3"	3"	7.6	31
QP310	Honda	4 Stroke Petrol	GX240 or GX390(E)	8,13	30	1300	3"	3"	7.6	79
QP402	Honda	4 Stroke Petrol	GX240 or GX390(E)	8,13	28	1800	4"	4"	7.6	79
QP602[#]	Honda	4 Stroke Petrol	GX390E	13	23	2900	6"	6"	7.4	140

Five Year Warranty:

Aussie Quik Prime pumps carry a unique pump end **five year warranty**. The products are guaranteed to be free of faulty workmanship or material for a period of five years after the date of sale to the end user.

Only **top quality genuine** brand engines by reputable manufacturers are used. A **3 year Honda GX engine warranty** applies, administered by the Honda international service network.

[#] Long range fuel tank (18L) for up to 4.5hrs running time

Due to our program of continuous product development the manufacturer reserves the right to alter specifications without notice.



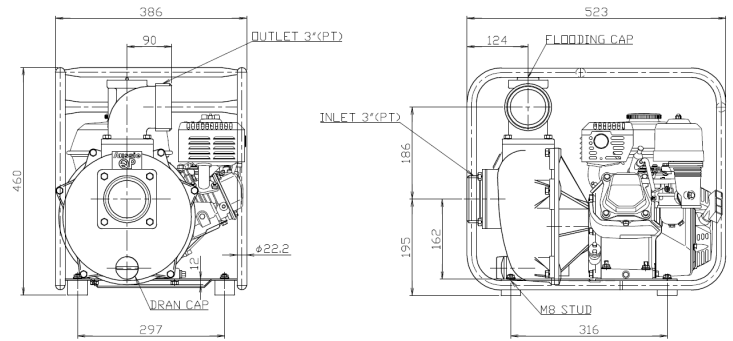


AUSSIE QUIK PRIME PETROL DRIVE GUSHERS

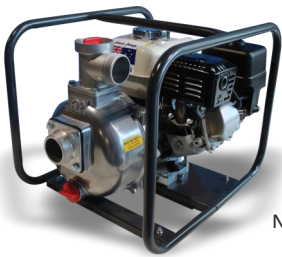
Construction:

Front case	Marine grade aluminium
Volute	Marine grade aluminium
Back plate	Marine grade aluminium
Mechanical seal	Carbon/ceramic
Outlet	Marine grade aluminium
Casing bolts	Zinc plated steel
Check valve	Nitrile rubber
Priming & drain plugs	Polycarbonate
Casing, priming & drain plug o-rings	Nitrile rubber
Finish	Brushed aluminium (except QP602)
Impeller	Cast iron

Dimensions:



Model	Width (mm)	Height (mm)	Length (mm)	Weight (kg)
QP-2/GX120	345	407	455	24
QP209/GX160	386	460	523	30
QP303/GX160	386	460	523	30
QP303/GX200E	542	470	560	35



NEW QP-2/GX120



QP209/GX160

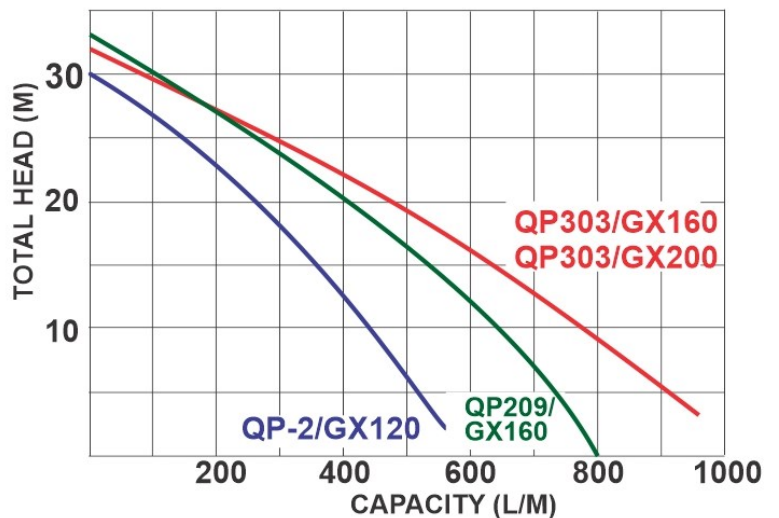


QP303/GX160

Performance Curve (2" & 3"):

Golden Rule

Operate pump at the best efficiency point
... 85% of max pump head



Standard Accessories:

- Coupling kit & strainer
- Full frame

Due to our program of continuous product development the manufacturer reserves the right to alter specifications without notice.



AUSSIE QUIK PRIME PETROL DRIVE GUSHERS

Dimensions:

Model	A (mm)	B (mm)	C (mm)	Weight (kg)
QP310/GX390	500	608	722	79
QP402/GX390 (e/start option)	500 (608)	608 (678)	722 (735)	79
QP602/GX390	680	782	910	140



QP310/GX390E



QP602/GX390E
with long range
fuel tank.
Running time
approx. 4.5
hours.

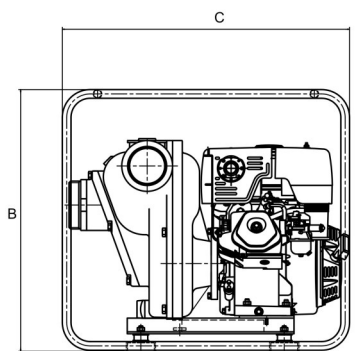
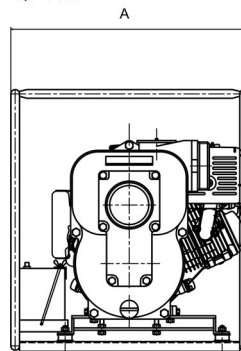
Standard Accessories:

- Coupling kit & strainer
- Full frame

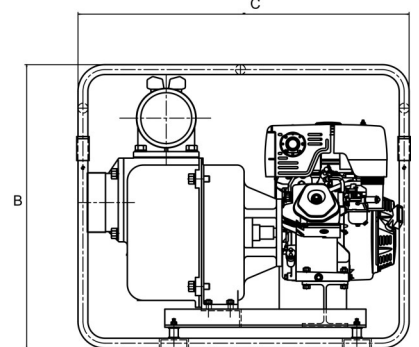
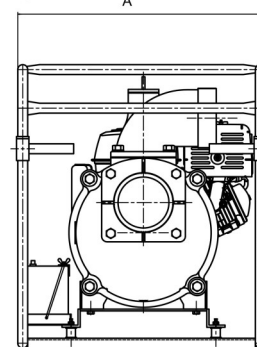
Optional Accessories:

- Heavy duty suction hose, 1½" through to 6"
- Lay flat delivery hose 1½" through to 6"
- Diesel compatible fuel transfer hoses
- Full galvanised roll frame provided as standard equipment on all diesel engine drive versions and suitable for corrosive or extreme applications

QP402



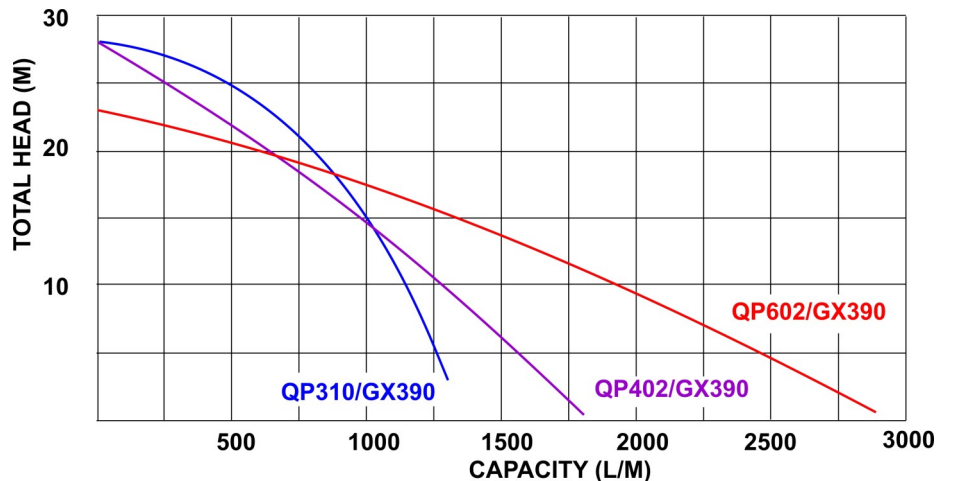
QP602



Golden Rule

Operate pump at the best efficiency point
... 85% of max pump head

Performance Curve (3", 4" & 6"):



Due to our program of continuous product development the manufacturer reserves the right to alter specifications without notice.