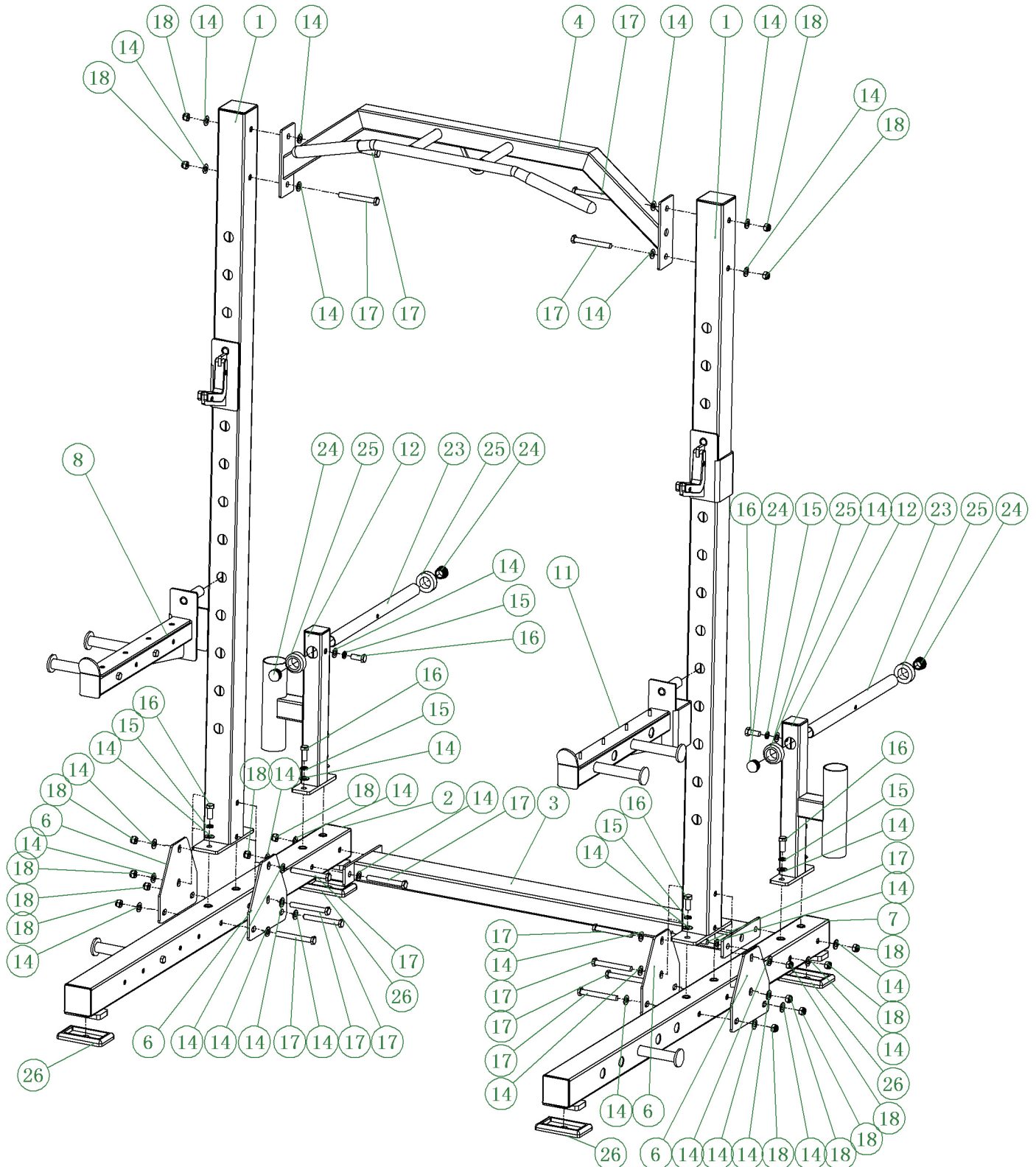


MULTIFUNCTIONAL SQUATTING FRAME

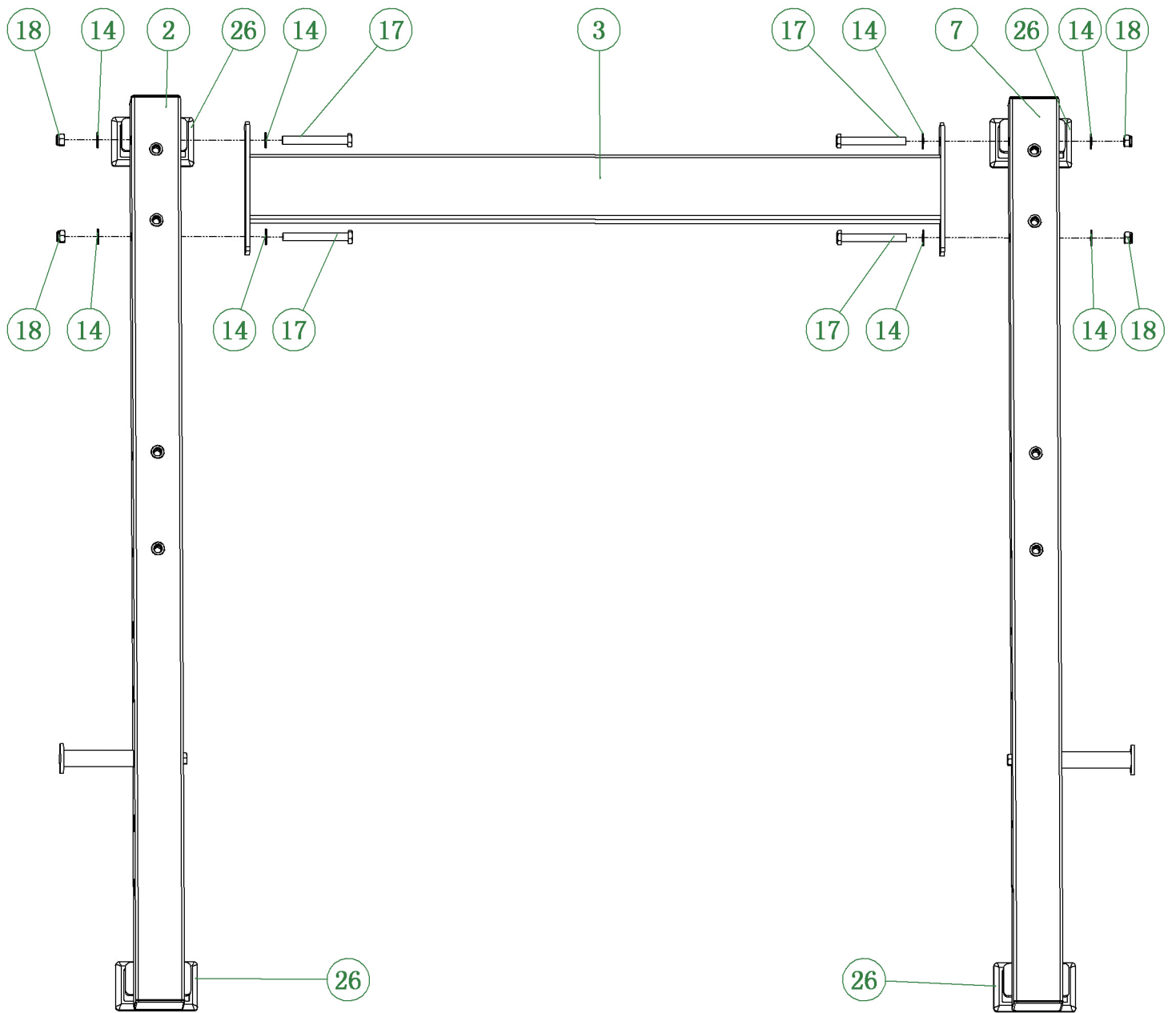
USER MANUAL



ACCESSORIES LIST

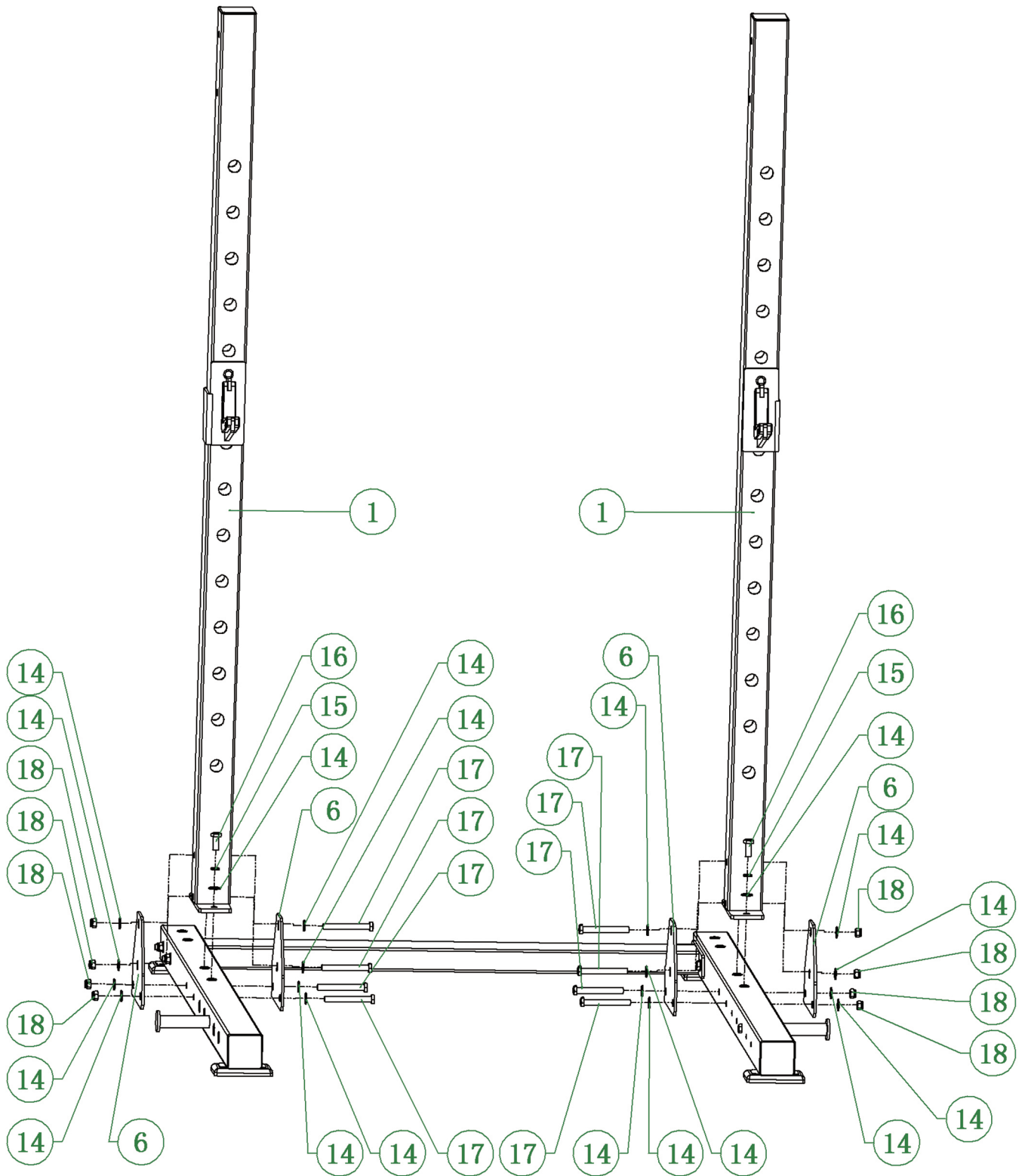


Serial No	Part No	Part name	Specification	Quantity
1	100	Column Combination	-----	2
2	200	Bottom tube Combination	-----	1
3	300	Connecting Pipe combination	-----	1
4	500	upper bar combination	-----	1
6	B4009	Stiffening Plate	T5*190*200	4
7	200	Bottom tube Combination	-----	1
8	700	Insurance combination	-----	1
11	700	Insurance combination	-----	1
12	400	plates storage	-----	2
14	S5301	Flat Gasket		42
15	S5702	Spring washer	d12.5*D18*T2.5	10
16	S5108-04	Hex screw	M12*30	10
17	S5108-15	Hex screw	M12*100	16
18	S5203	Lock nut	M12	16
19	S5111-03	Sink hex screw inside the head	M6*16黑色	8
20	S5124	Hex aocket head cap screw	M5*20	
21	S5218-01	Lock nut	M6	4
22	S5107-16	Hex screw	M10*25	6
23	BTZ-4000	Weight plate storage	-----	2
24	W5024	Flat Plug	-----	4
25	W7019	Gasket	-----	4
26	W7010	Foot mat	-----	4
27		hex wrench	4MM	1
28		hex wrench	5MM	1
29		hex wrench	6MM	1
30		spanner	17-19MM	2
31		paster	-----	2



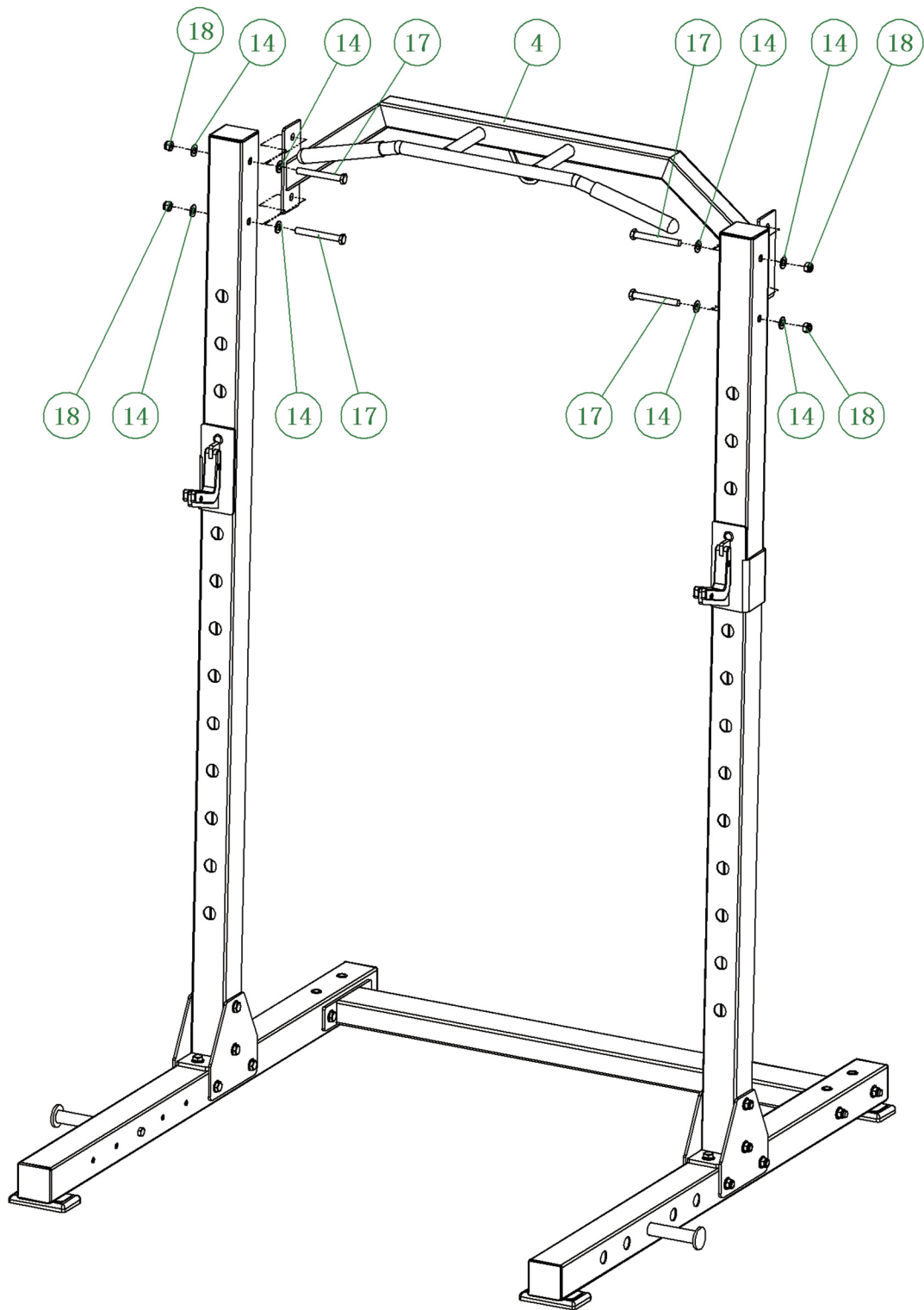
STEP 1

Install 4 footpads and assemble the 2 foot groups and connecting tubes with screws and nuts.



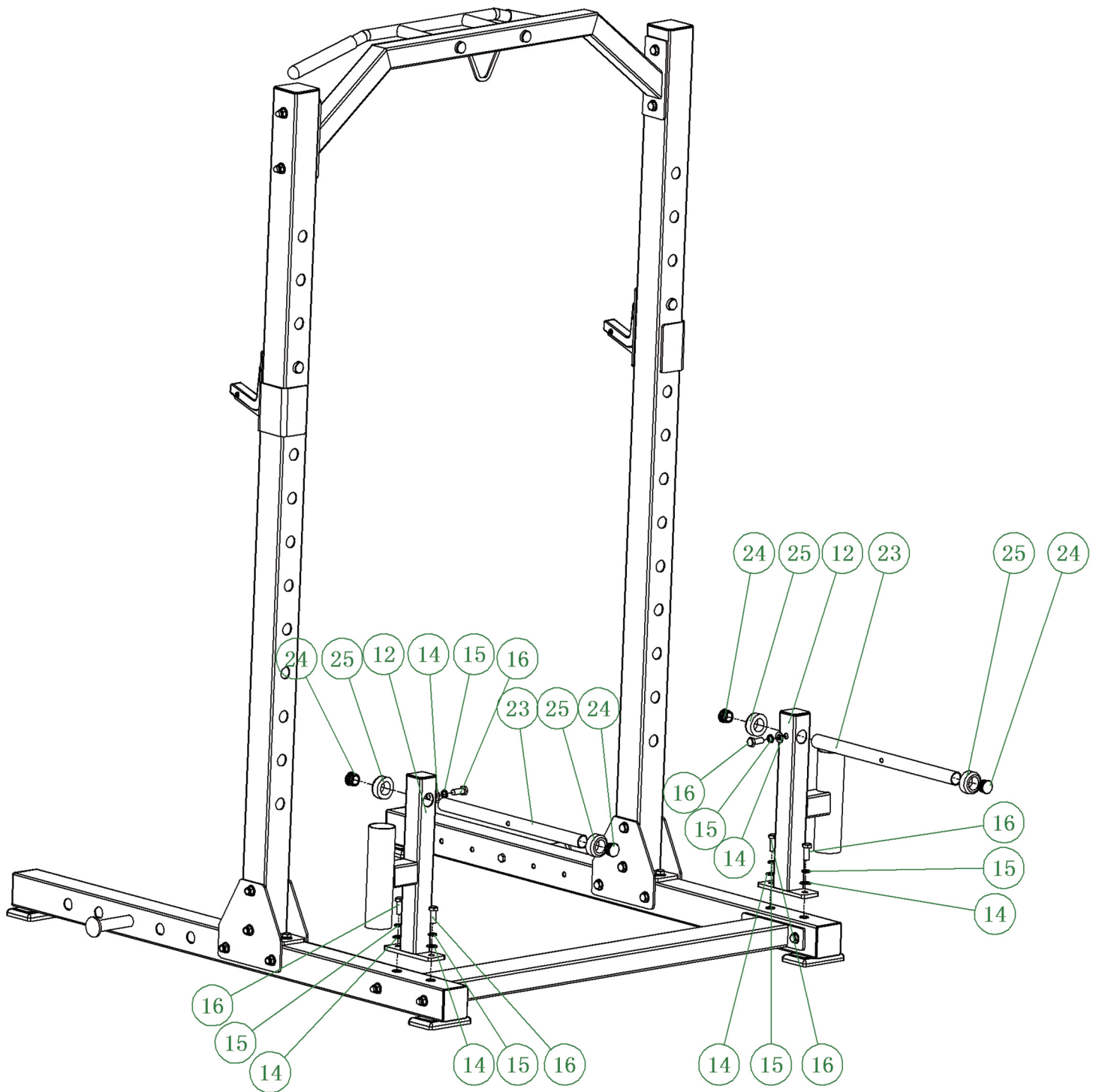
STEP 2

The left and right columns and the bottom pipe combination are linked together, and 2 fixing plates are installed on the left and right sides to fix the columns. (note: Do not tighten)



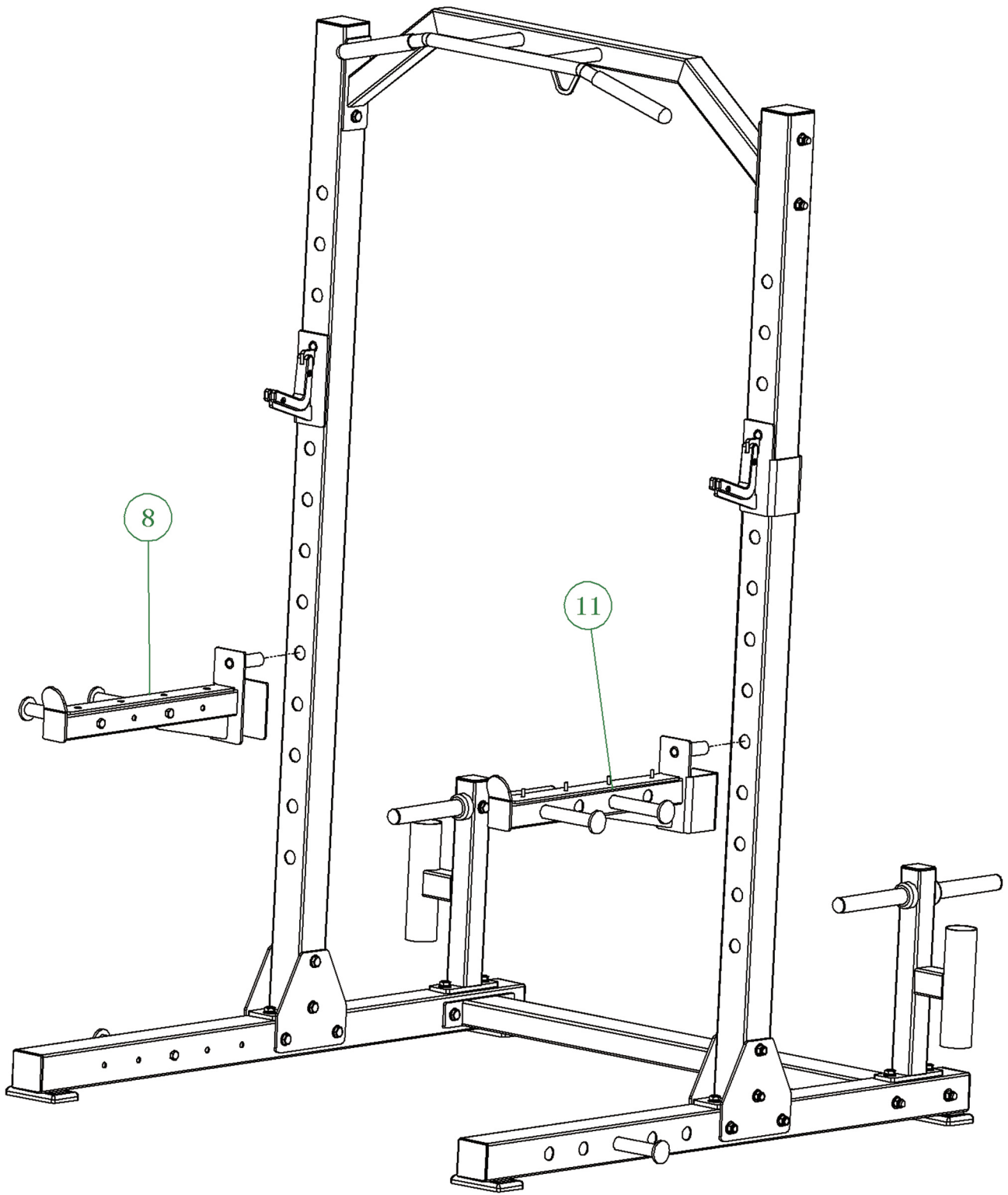
STEP 3

Connect the upper handle assembly to the left and right columns and tighten the screws. (note: tighten the screws on the fixing plate at the same time)



STEP 4

The two barbell sheet supports are installed on the left and right bottom pipe combination. And 2 barbell pieces of pipe installed in the barbell piece bracket above, fastening screws



STEP 5

Install the left and right safety assembly and check the fastening of each part.