

# ADCOM<sup>®</sup>

*we have the power*



# GIA-275

**\*Preliminary\***

## User Guide

## **PERFORMANCE AND VALUE**

In the world of high performance electronics, Adcom has done the impossible: make state of the art components that are easy to use at an affordable price. In doing this, Adcom has created a revolution in the world of consumer electronics. By creating some of the most renowned components and offering them at affordable prices, Adcom has enabled more people to enjoy their favorite music and movies at top performance levels. Perhaps *Audio Magazine* said it best: "No competing company I know can provide a similar balance of sound quality, power and affordability."

## **AWARD WINNING**

Innovation is our stronghold, and our numerous awards year after year prove that we're never satisfied to rest on our reputation. From our legendary high current amplifiers to our state-of-the-art digital processors, Adcom components consistently impress even the most demanding audiences. Adcom components have won over 25 Product of the Year and Special Recognition citations from Audio Video International, 3 Diapason D'Or Awards, 7 Consumer Electronics Show Design and Engineering Awards, and have appeared on Stereophile's "Recommended Components" lists over 70 times since 1988. A reputation worth its weight in gold.

## **ENGINEERING PASSION**

Every Adcom component is not only designed to reproduce the highest quality sound and picture, but to also deliver the greatest possible value. It is our engineers' passion for perfection that has enabled our components to be judged the equivalent of others costing two, three, or even five times as much. Our engineering team consistently strives to develop and design products that will exceed your expectations. Our goal at Adcom is to let more consumers hear high-end quality sound and see high-end video without paying high-end prices.

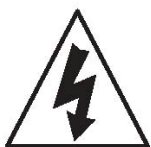
All Adcom components are the result of a long-standing dedication to innovation, quality, simplicity and value. Adcom, we have the power, and now so do you.

**This document is subject to change. Please check our website for the most up-to-date version.**

ADCOM is a registered trademark of ADCOM LLC

Copyright © 2014 ADCOM LLC. All rights reserved. No part of this manual may be reproduced or electronically transmitted without the express written consent of ADCOM LLC

Warning: To reduce the risk of fire or electric shock, do not expose this unit to rain or moisture.



The graphic symbol of a lightning flash with an arrow point within a triangle signifies that there is dangerous voltage within the unit and it poses a hazard to anyone removing the cover to gain access to the interior of the unit. Only qualified service personnel should make any such attempt.



The graphic symbol of an exclamation point within an equilateral triangle warns a user of the device that it is necessary to refer to the instruction manual and its warnings for proper operation of the unit.

Do not place this unit on an unstable cart, stand, tripod, bracket, or table. The unit may fall, causing serious injury to a child or adult, and serious damage to the unit. Use only with a cart, stand, tripod, bracket, or table recommended by the manufacturer or sold with the unit. Any mounting of the device should follow the manufacturer's instructions, and should use a mounting accessory recommended by the manufacturer.

Read all the safety and operating instructions before connecting or using this unit.

Retain this notice and the owner's manual for future reference. All warnings on the unit and in its operating instructions should be adhered to. All operating and use instructions should be followed.

Do not use this unit near water. For example, near a bathtub, washbowl, kitchen sink, laundry tub, in a wet basement, or near a swimming pool.

The unit should be installed so that its location or position does not interfere with its proper ventilation. For example, it should not be situated on a bed, sofa, rug, or similar surface that may block the ventilation openings; or placed in a built-in installation, such as bookcase or cabinet, that may impede the flow of air through its ventilation openings.

The unit should be situated away from heat sources such as radiators, heat registers, stoves, or other devices (including amplifiers) that produce heat.

The unit should be connected to a power supply outlet only of the voltage and frequency marked on its rear panel.

The power supply cord should be routed so that it is not likely to be walked on or pinched, especially near the plug, convenience receptacles, or where the cord exits from the unit.

Clean unit only as recommended in its instruction manual.

The power supply cord of the unit should be unplugged from the wall outlet when it is to be unused for a long period of time.

Care should be taken so that objects do not fall, and liquids are not spilled, into the enclosure through any openings.

This unit should be serviced by qualified service personnel when:

- A. The power cord or the plug has been damaged; or
- B. Objects have fallen, or liquid has been spilled, into the unit; or
- C. The unit has been exposed to rain, or liquids of any kind; or
- D. The unit does not appear to operate normally, or exhibits a marked change in performance; or
- E. The device has been dropped, or the enclosure damaged.

DO NOT ATTEMPT SERVICING OF THIS UNIT YOURSELF. REFER SERVICING TO QUALIFIED SERVICE PERSONNEL.

#### ATTENTION

POUR PREVENIR LES CHOCS ELECTRIQUES NE PAS UTILISER CETTE FICHE POLARISEE AVEC UN PROLONGATEUR, UNE PRISE CE COURANT OU UNE AUTRE SORTIE CE COURANT, SAUF SI LES LAMES PEUVENT ETRE INSEREES A FOND SANS EN LAISSER AUCUNE PARTIE A DECOUVERT.

**CAUTION** TO PREVENT ELECTRIC SHOCK DO NOT USE THIS POLARIZED PLUG WITH AN EXTENSION CORD, RECEPTACLE OR OTHER OUTLET UNLESS THE BLADES CAN BE FULLY INSERTED TO PREVENT BLADE EXPOSURE.

#### CAUTION POWER LINES

Any outdoor antenna must be located away from all power lines.

**OUTDOOR ANTENNA GROUNDING** If an outside antenna is connected to your tuner or tuner / preamplifier, be sure the antenna system is grounded so as to provide some protection against voltage surges and built-up static charges. Section 810 of the National Electrical Code, ANSI/NFPA No. 701984, provides information with respect to proper grounding of the mast and supporting structure, grounding of the lead-in wire to an antenna discharge unit, size of grounding conductors, location of antenna discharge unit, connection to grounding electrodes, and requirements for the grounding electrode.

## Introduction

Congratulations on your decision to purchase the GIA-275 Integrate DAC / Amplifier. Two channel audio is better than ever! The GIA-275 will work with all of your Bluetooth enabled portable devices and also supports playback of high resolution audio via a USB connection to your PC or media server. The GIA-275 is designed to reproduce the fidelity that high resolution audio has to offer. Equipped with analog and digital inputs (optical, coax & USB), the GIA-275 hasn't forgotten about your legacy components. You can connect your flat screen TV through a digital connection or use your legacy analog and digital devices such as a CD, DVD, Blu-ray, cable box, satellite receiver etc. To realize the full potential of the GIA-275, and before making any connections to it, please read these operating and installation instructions thoroughly.

## Key Features

- Bluetooth V4 with A2DP & aptX full CD quality sound
- 24bit 192kHz high resolution audio
- Analog & digital inputs
- Optical & Coax digital outputs
- Front panel mp3 input
- Front panel headphone jack
- 80 watts of power at 8 ohms
- 120 watts of power at 4 ohms
- Remote control

## Unpacking the GIA-275

Before your new GIA-275 left our factory, it was carefully inspected for physical imperfections and tested for all electrical parameters as a routine part of ADCOM's systematic quality control. This, along with full operational and mechanical testing, should ensure a product flaw- less in both appearance and performance. After you have unpacked the GIA-275, inspect it for physical dam- age. Save the shipping carton and all packing material as they are intended to reduce the possibility of transportation damage should the GIA-275 ever need to be shipped.

In the unlikely event damage has occurred, notify your dealer immediately and request the name of the carrier so a written claim to cover shipping damages can be initiated. The right to a claim against a public carrier can be forfeited if the carrier is not notified promptly in writing and if the shipping carton and packing materials are not available for inspection by the carrier. Save all packing materials until the claim has been settled.

## Placing the GIA-275

The GIA-275 is a compact product that can get warm when used for extended periods or at high listening levels. It is good practice to ensure the GIA-275's long-term, trouble-free operation to provide adequate ventilation for the unit. Therefore, the GIA-275 should be kept away from external sources of heat such as radiators, hot-air ducts and direct sun light. We recommend that you DO NOT place components on top of the GIA-275. If you observe these recommendations the GIA-275 will perform reliably in any reasonable environment. You should also pay attention to such normal considerations as protection from excessive dust and moisture. Dust on the surface of the cabinet can be easily and safely removed with a duster such as made by Swiffer™. Finger prints can be removed with a soft cloth (preferably microfiber) dampened with a mild non- ammonia cleaner.

The optimal performance of your new GIA-275 will ultimately depend on the care with which you make the connections between the GIA-275, the source devices and the loudspeakers. All input and output signal connections should be made only with high quality, low-loss, low capacitance cables. **Speaker connections MUST be made using banana plugs at the back of the GIA-275.** For recommendations of the type and quality of interconnections that are best for your applications, consult with your ADCOM retailer.

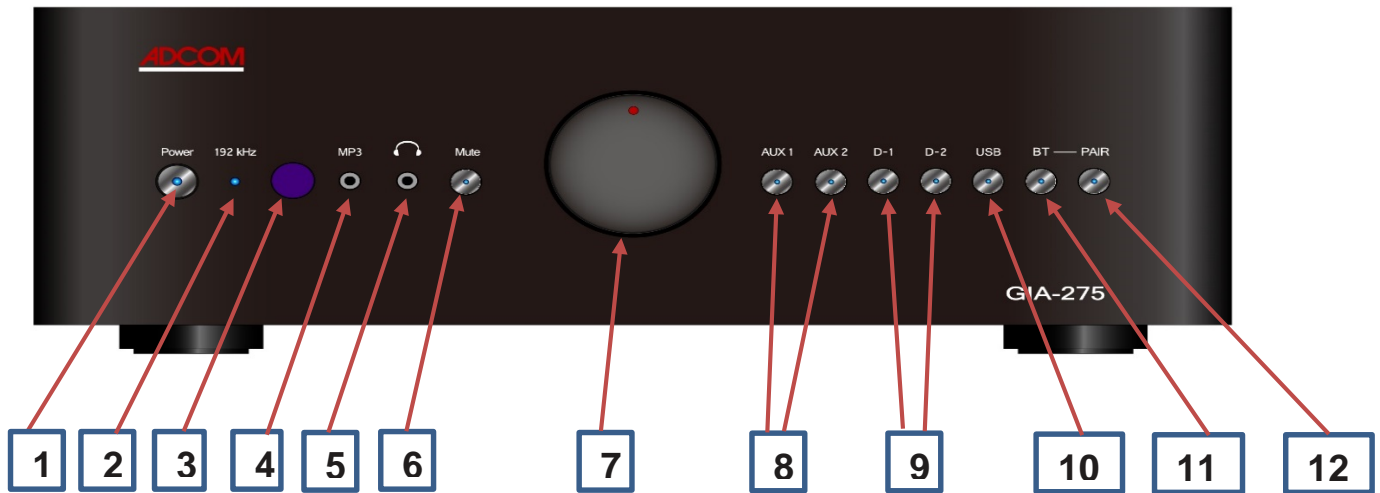
## Safety Information

There are no user serviceable parts inside. Refer all servicing to qualified service personnel. The unit must be connected to a power supply only of the type and voltage specified on the rear panel. Connect the component to the power outlet only with the supplied power supply cable or an exact equivalent. Do not modify the supplied cable. Do not defeat grounding and/or polarization provisions. The cable should be connected to a 3-pin polarized wall outlet, matching the wide blade of the plug to the wide slot of the receptacle. Do not use extension cords.

Do not route the power cord where it will be crushed, pinched, bent, exposed to heat, or damaged in any way. Pay particular attention to the power cord at the plug and where it exits the back of the unit. The power cord should be unplugged from the wall outlet if the unit is to be left unused for a long period of time.

Immediately stop using the component and have it inspected and/or serviced by a qualified service technician if:

The power supply cord or plug has been damaged, objects have fallen on or liquid has been spilled into the GIA-275, the GIA-275 has been exposed to rain, the GIA-275 shows signs of improper operation or it has been dropped or damaged.



## Description of Front Panel

**[1] Power button** - Toggles the GIA-275 in and out of Standby mode. When in standby mode, the GIA-275 is activated by pressing either the remote control power button or toggling the front panel power switch. When the GIA-275 is active, the LED indicator in the Standby button will illuminate BLUE. When the GIA-275 is in standby mode the button will illuminate RED.

**[2] 192kHz Indicator** - When playing high resolution audio the LED indicator will illuminate BLUE. When playing 'standard' resolution audio the indicator will not illuminate.

**[3] IR Sensor** - The IR sensor receives signals from the remote control.

**[4] mp3 Jack** - Mp3 players can be connected via the mp3 jack. This jack will accept a standard 3.5mm stereo plug. The device connected to this jack will become the active device.

**[5] Headphones Jack** - Headphones may be used through the use of the headphones output jack. Output to the speakers will be disconnected when headphones are connected. The volume control can be used to adjust the headphone volume when headphones are connected. This jack will accept a standard 3.5mm stereo headphone plug.

**[6] Mute** - You can mute the GIA-275 by pressing the Mute button. Press it a second time or press Mute on the remote control to un-mute.

### [7] Volume Control

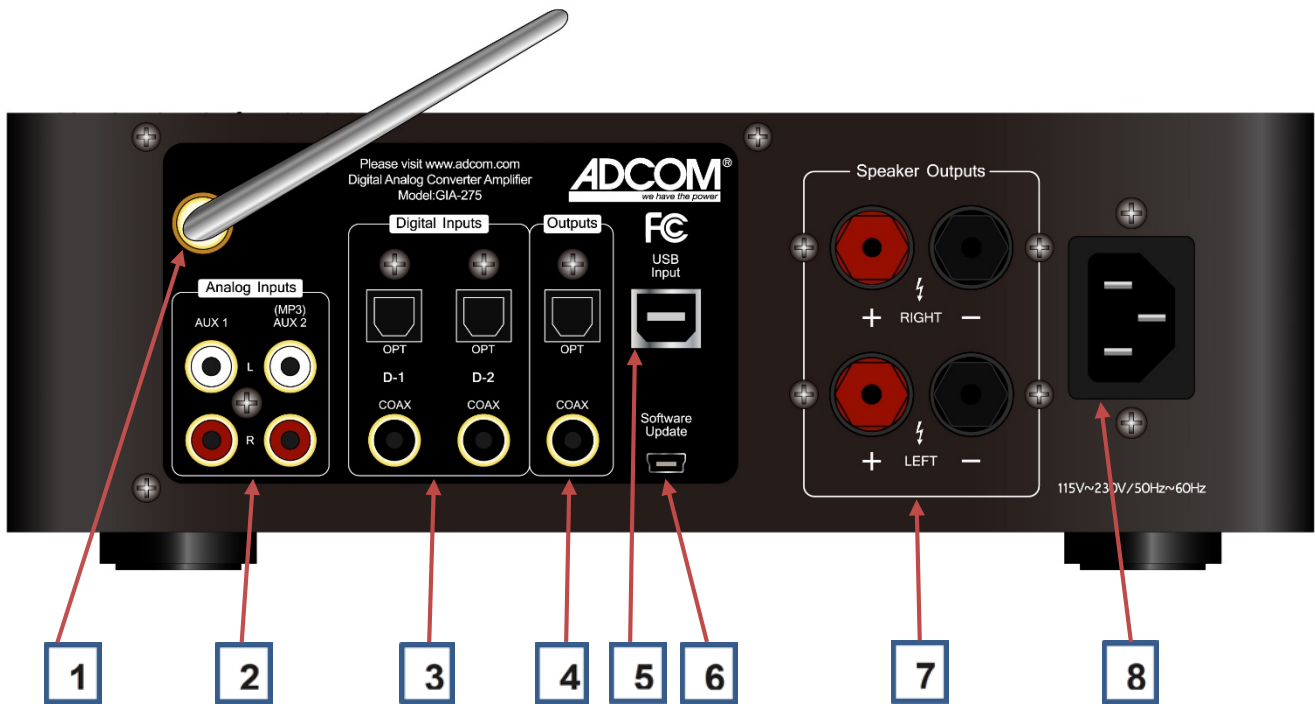
**[8] Analog Input Select** - Press AUX1 to select the analog device connected to the AUX1 Analog Inputs on the rear panel. Press AUX2 to select the mp3 or other analog device connected to AUX2 on the rear panel.

**[9] Digital Input Select** - Press D-1 to select the device connected to the D-1 Optical or Coax connector on the rear panel. Press D-2 to select the device connected to the D-2 Optical or Coax connector on the rear panel

**[10] USB Input Select** - Press to select the device connected to the USB Input on the rear panel.

**[11] Bluetooth Select** - Press to select Bluetooth as the input device.

**[12] Bluetooth Pairing** - Press for 3 seconds to enable Bluetooth pairing. LED will blink slowly. Press again to initiate pairing. LED will blink rapidly when GIA-275 is in pairing mode and ready to pair. LED will blink slowly when paired with source device.



## Description of Rear Panel

**[1] Antenna** - Bluetooth receiver antenna. For best reception, position the antenna so that it is exposed above the top of the GIA-275. Avoid metal obstructions (cabinets, appliances, doors etc.) between the GIA-275 and your Bluetooth source device.

**[2] Analog Source Inputs** - Connect the R & L line level analog outputs of a source device such as a CD player to AUX1 or AUX2. AUX2 can also be used for input from an mp3 device.

**[3] Digital Source Inputs** - Connect the Toslink Optical or S/PDIF Coax audio output from a TV, DVD, BluRay Player etc. to the appropriate D-1 or D-2 Optical or Coax input. Note that you may need to set the TV, DVD etc. audio configuration for 2 channel/stereo mode. Do NOT use the Dolby surround mode on the source device, it may not work and/or the sound may be distorted.

**[4] Digital Outputs** - Connect the Toslink Optical or S/PDIF Coax output to the digital input on a compatible device.

**[5] USB Input** - Connect the USB output of the GIA-275 to a USB 2 or 3 connector on your PC. Install the USB Audio 2 Driver if you are using Windows XP, Vista, 7 or 8. Install a media player such Foobar2000, jRiver etc. if you intend to play high resolution audio files.

**[6] Software Update** - Use this USB connection to your PC to install GIA-275 firmware updates issued by ADCOM.

**[7] Speaker Connections** - Using banana plugs, connect your 8 or 4 ohm speakers to the GIA-275. **\*\*CAUTION\*\* To avoid shorting the speakers to the metal case it is important that you use banana plugs to make the connections.**

**[8] AC Power connection** - Connect the AC power cord here. Units shipped from North America are factory set for 120VAC 60Hz. **\*\*CAUTION\*\*** Internal changes are required to change the AC Voltage.

# GIA-275

# OPPO DVD

Power OFF  
Power ON



DVD ON/OFF

## Select Input Device:

-Analog Device AUX1



-Digital Device D1

-USB Device

-Analog Device AUX2



-Digital Device D2

-Bluetooth Device

Volume DOWN



MUTE

Volume UP

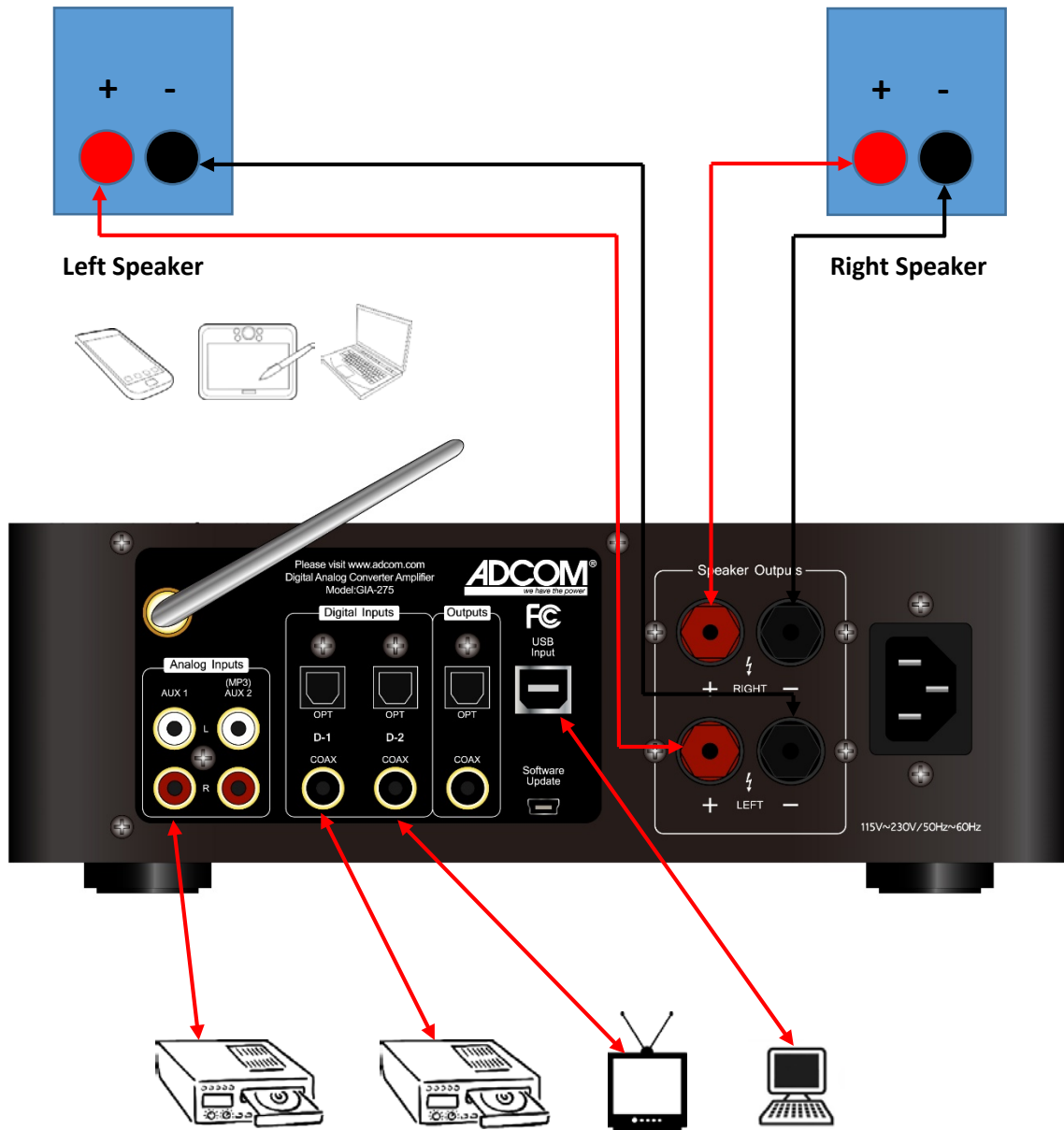


Various DVD Controls

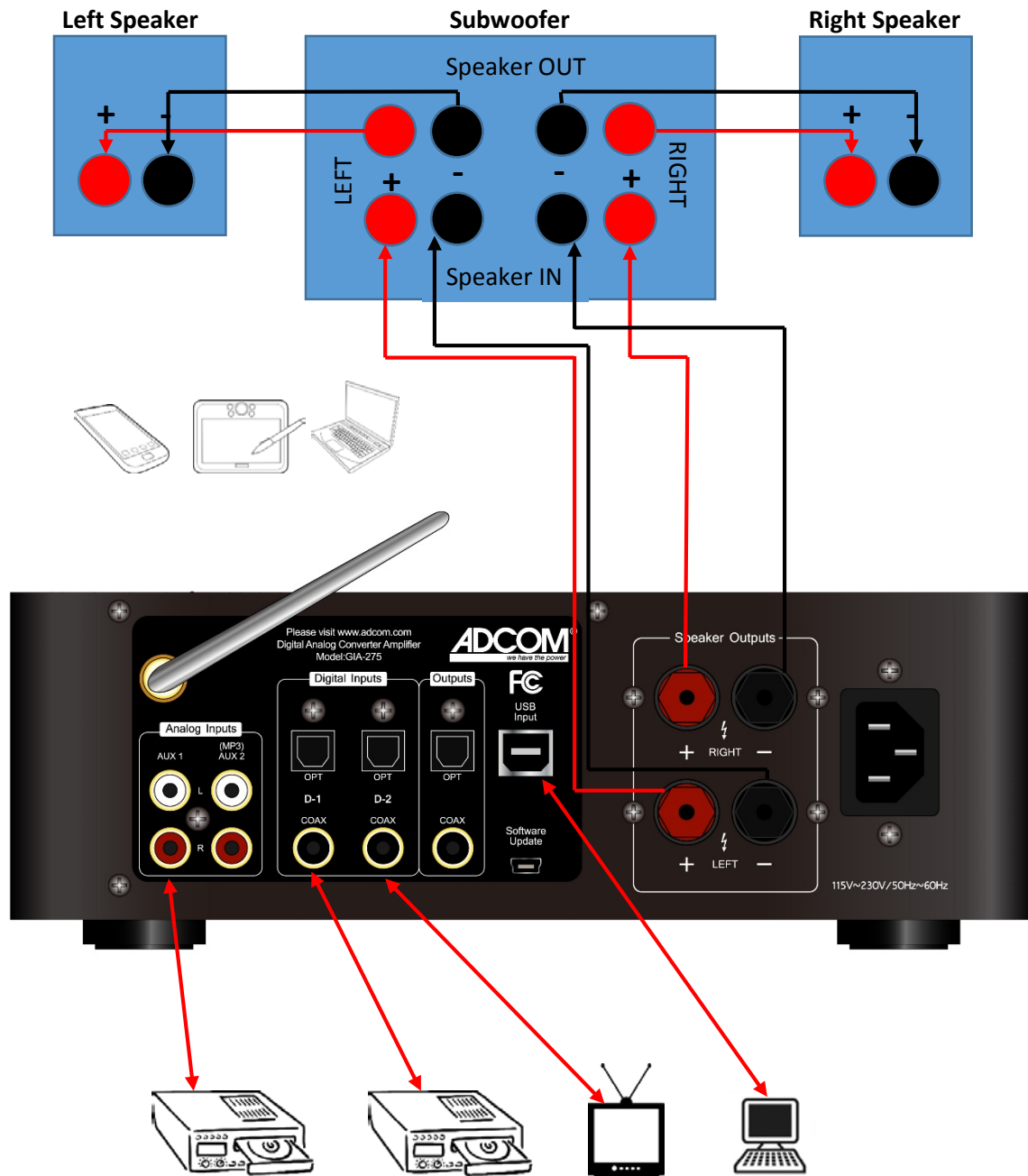
**ADCOM**

G R C - 1 5





**Configuration with two speakers**



**Configuration with  
two speakers & subwoofer**

## Connect a Bluetooth Device to the GIA-275

- 1) Press the BT button [11] on the front panel to select Bluetooth input. The BT button LED will illuminate blue.
- 2) Press the Pair button [12] on the front panel for 3 seconds, the Pair button LED will illuminate blue and blink slowly.
- 3) Press the Pair button [12] a second time to make the GIA-275 discoverable and put it in pairing mode. The Pair button will illuminate blue and blink rapidly when in pairing mode.
- 4) Enable Bluetooth on your source device (e.g., phone, tablet, laptop etc.) and put it in search/pairing mode.
- 5) In 1-15 seconds you should see a Bluetooth product named ARM-HIC-SPDIF-720 on your source device. Select it. Your source device will pair with the GIA-275 and should indicate that it is connected.
- 6) Once connected, the GIA-275 BT button [11] will remain illuminated blue and the Pair button [12] LED will continue to blink at a medium speed. If/when the Bluetooth source device is disconnected or drops the connection because of poor reception, the blink rate will slow down.
- 7) Play some music!

Note: Your Bluetooth source device will connect to the GIA-275 with the highest quality audio connection available on the source device. To get the best quality sound you should use maximum bitrate rips (preferably lossless) and a phone, tablet, laptop... that supports aptX. For more information about aptX and devices that support it please visit [www.aptx.com](http://www.aptx.com).

## Connect The GIA-275 to your MAC

Prerequisite: OSX V10.6 or later, USB 2 or 3 port

If you wish to play high resolution audio (24 bit 192kHz) as well as CD quality 16 bit audio through your MAC you can connect the GIA-275 to a MAC USB 2 or 3 port using the USB cable supplied with the GIA-275. MAC OSX version 10.6 and later provide native support for USB Audio 2 and it is not necessary to install a driver. Simply connect the GIA-275 to a MAC USB 2 or 3 port and follow the instructions on the screen. There are a number of media players available that support high resolution audio on the MAC.

## Connect The GIA-275 to your Windows System

Prerequisite: Win XP, Vista, 7, 8 or 8.1, USB 2 or 3 port

Windows XP, Vista, 7, 8 and 8.1 provide native support for USB Audio 1 but do not provide support for USB Audio 2. Therefore, if you wish to play high resolution audio (24 bit 192kHz) as well as CD quality 16 bit audio through your Windows system, you will need to install the USB Audio 2 driver from the CD supplied with the GIA-275. Once the USB Audio 2 driver is installed, Windows Media Player can play standard quality audio through the GIA-275 (high resolution audio is NOT supported by Windows Media Player). If you wish to play high resolution audio you will need to install a media player such as Foobar2000 (free) or jRiver (\$) (or others) in addition to the driver supplied with the GIA-275.

Note that the GIA-275 must be connected to a USB 2 or USB 3 port on your PC. It will NOT work if connected to a USB 1 port. USB 1 is too slow for high resolution audio.

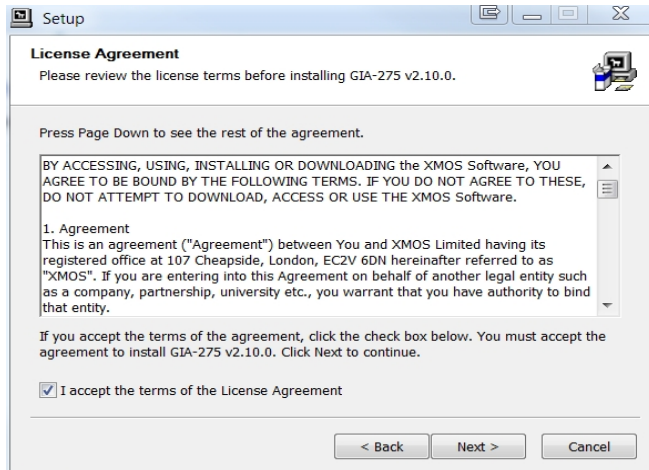
## Install the USB Audio 2 Driver on a Windows System

(Installation on Windows 7 is illustrated below)

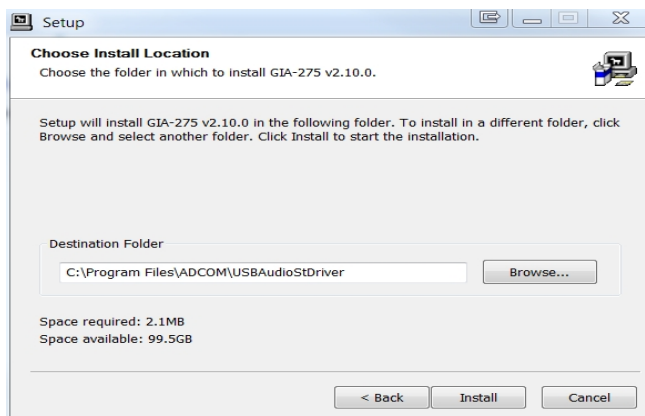
- 1) Using the supplied USB cable, connect the GIA-275 to any available USB 2 or 3 port on your PC and turn it on.
- 2) Login to system as administrator or to an account with administrative privileges.
- 3) Load the supplied ADCOM CD on the CD drive in your PC.
- 4) Click on the file: xmos\_usb\_audio\_2\_driver\_install\_2v10\_2020.exe to start the installation.



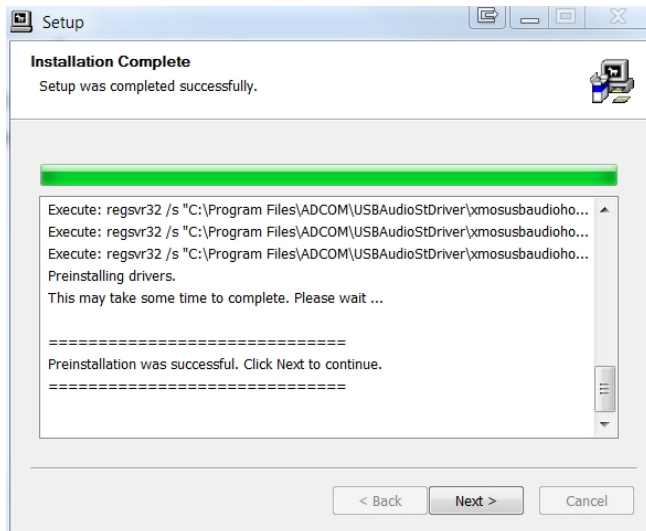
- 5) Click on Next



- 6) Accept the license terms then click on Next



- 7) Click on Install (installation may take several minutes)

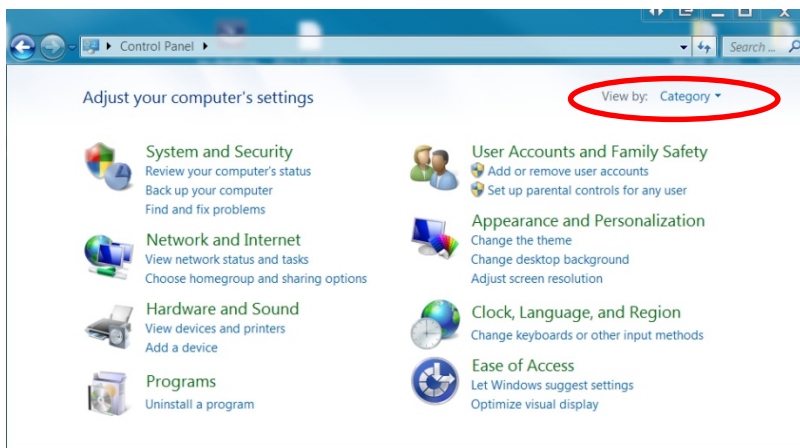


8) Click Next

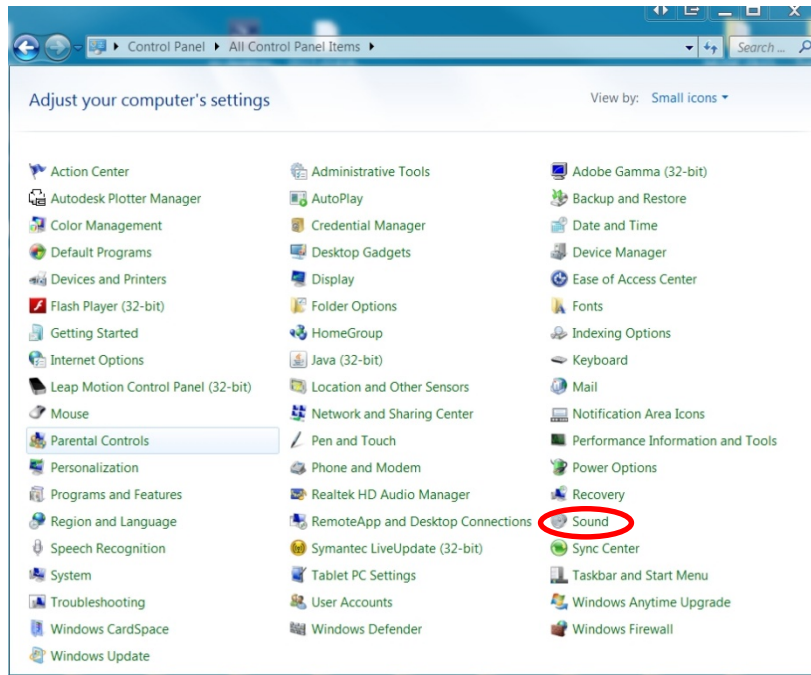


9) Click Finish

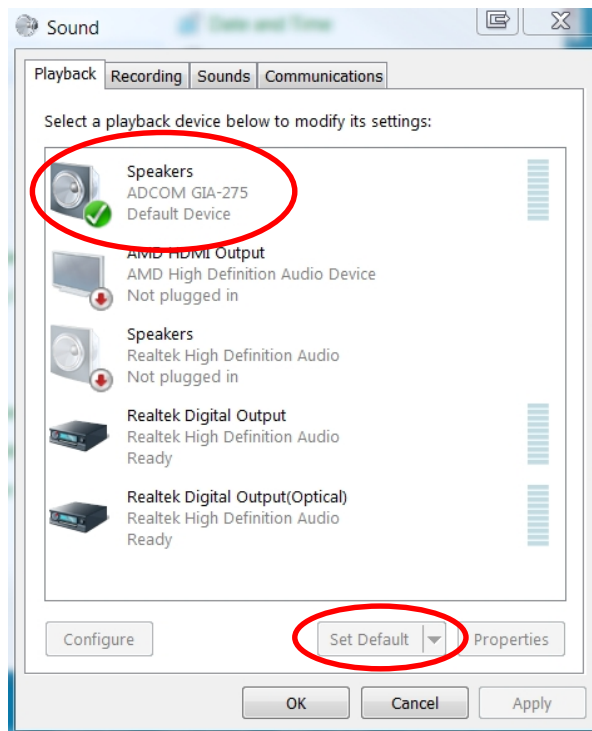
10) Click on Control Panel & set View by to: Small Icons (look at upper right corner of window)



11) Click on Sound



You should see that the ADCOM GIA-275 has been selected as the default device for Speakers. If it has not been set as the Default Device, click on it to select it and then click on Set Default.



12) Click OK and then exit the Control Panel.

You should now be able to play CD quality music through the GIA-275 using Windows Media Player.

## High Resolution Audio from a Windows System

If you wish to play high resolution audio files such as DSD, DSF, DFF, FLAC (24 bit) and many other high resolution formats, you will need to install a media player that is capable of playing 24 bit 192kHz music. There are a number of media players such as Foobar2000 (free), jRiver (\$) and others that are available for download from the internet.

We will publish additional guides to the installation and configuration of various media players and their use with the GIA-275 on our website. All of the media players we have tested install easily and 'see' the GIA-275 immediately. Most have built-in or addon equalizers that enable you to customize the sound to your speakers, listening environment and personal preferences.

Foobar2000 is available here: <http://www.foobar2000.org/> (free & many addons are available)

jRiver is available here: <http://jriver.com/> (free 30 day trial. Full featured and nice UI)

There are many sources for both free and paid high resolution audio files. Here are A few that might be of interest:

<http://www.lessloss.com/high-resolution-audiophile-recordings-c-68.html>

<http://www.channelclassics.com/high-resolution-audio-downloads.html>

<http://www.highresaudio.com/>

<http://bluecoastrecords.com/>

<http://www.2l.no/hires/> (free samples only)

<https://archive.org/details/audio>

<http://store.acousticsounds.com/cat/365/DSD>