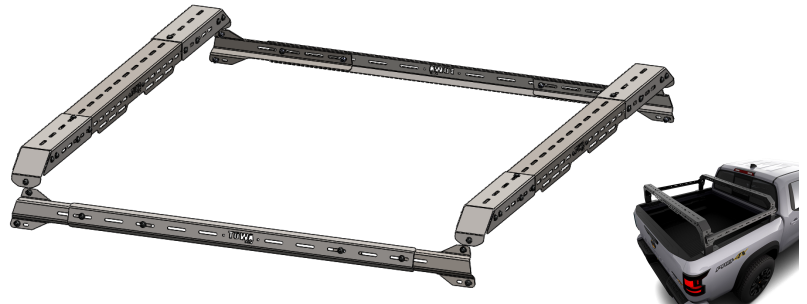




INSTALLATION GUIDE
GUÍA DE INSTALACIÓN

**UPPER BAR
SHIPROCK BED RACK SYSTEM +
SIDE BARS**

BARRA SUPERIOR
MIDRACK BEDRACK +
BARRAS DE CONECCIÓN



CODE **SR4CX47**

CÓDIGO **BT-50/7**

REQUIRED TOOLS

HERRAMIENTAS REQUERIDAS



WEIGHT 22.257 g.
PESO 48 lbs.



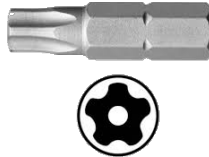
INSTALLATION TIME
TIEMPO DE INSTALACIÓN

20 min.

WRENCH 13
LLAVE



TORX 40
TORX



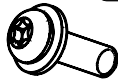
TORQUE WRENCH
TORQUIMETRO



HARDWARE

TORNILLERÍA

SCREWS TORX
TORNILLOS



A

M8x25

x36

FLAT WASHER
ARANDELA PLANA
VUELO CHICO



B

M8

x36

NUT
TUERCA
AUTOFRENANTE



C

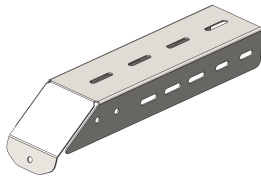
M8

x36

EXPLODED DETAIL

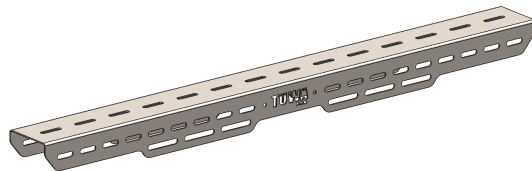
DETALLE DE DESPIECE

01



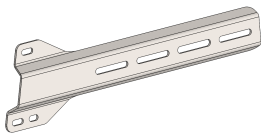
x4

02



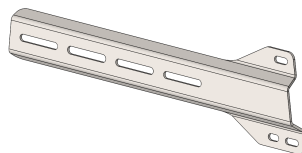
x2

03



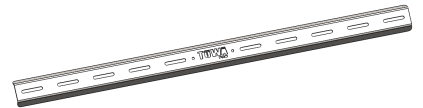
x2

04

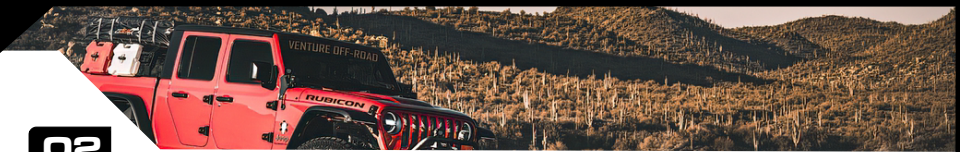


x2

05



x2



UPPER BAR - SHIPROCK BED RACK SYSTEM + SIDE BARS
BARRA SUPERIOR - MIDRACK BEDRACK + BARRAS DE CONECCIÓN

**THANK YOU FOR
TRUSTING OUR BRAND!**



SHARE YOUR SETUP ON SOCIAL MEDIA AND TAG @TUWAPRO FOR A 10% DISCOUNT ON ACCESSORIES.