

Roller.

Installation instructions



Side and head seals

Closes the gaps over extended areas left when garage doors are installed with a two-way brush sealing system.

Roller.

Installation instructions



Sides and head seals keep your garage cleaner and more comfortable.

Help keep out dirt, insects, pests and drafts around your garage door by sealing the sides with Cleverseal garage door sides and head seals. Effectively closes gaps over extended areas left when garage doors are installed with a two-way brush sealing system.

INSTALLATION:

Seals are designed to be affixed to the interior face of the garage door opening, side reveals (return wall), with the brush set so that it is concealed just in from the edge of the garage door opening.

When the seal engages the door it will be under compression and flatten against the door, becoming visible from outside.

IRREGULAR SURFACE:

Where the walls are of an irregular contour, consideration should be given to sealing behind the CLEVERSEAL aluminium carrier (#RTS systems), if the undulations are no greater than 5mm then it is suggested that the addition of a self-adhesive, low compression foam strip be affixed to the `back-face` of the aluminium carrier (#RTS systems).

If the undulations are greater than 5mm, the use of CLEVERSEAL #67540V is an efficient, quick, no mess option, with two bristle brush seals, one directed at the door and the other, back towards the wall surface, eliminating the need to apply messy tube type sealants.

Roller.

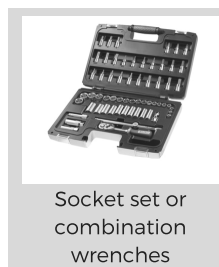
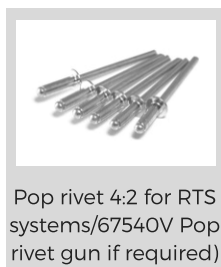
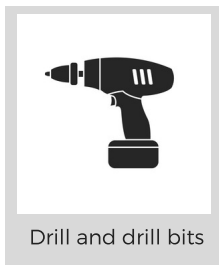
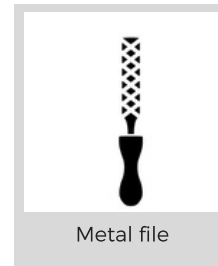
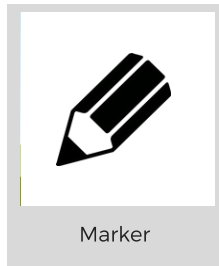
Installation instructions

SAFETY:

Safety glasses and ear protection to be worn.

Ensure that during the installation procedure children and any other person or persons not directly involved with the installation procedure are kept clear of the work area and well away from the garage door opening area.

TOOLS REQUIRED



Roller.

Installation instructions

Disengage auto openers and **DO NOT** re-engage until ALL seals are installed and the travel of the garage door has been manually tested without the garage door binding. **FAILURE TO FOLLOW THIS INSTRUCTION COULD RESULT IN SERIOUS DAMAGE TO THE DOOR**, requiring expensive component replacement.

Ensure that the remote control device or hand-set is in a safe, secure location, out of reach from children and any other person or persons not directly involved with the seal installation procedure.



NOTE

ONLY AFTER the seal has been fitted and the garage door has been manually operated without binding, **RE-ENGAGE** the auto opener, then, **HOLDING** the manual release cord in one hand, and with the remote control in the other hand, operate the garage door, following the garage door as it moves with holding the manual release cord.

If the garage door binds or hesitates **IMMEDIATELY** disengage the auto opener, then make the necessary adjustments until the garage door functions without binding and hesitation in auto opener mode. **FAILURE TO FOLLOW THIS INSTRUCTION COULD RESULT IN SERIOUS DAMAGE TO THE DOOR**, requiring expensive component replacement.

Roller.

Installation instructions

1



Measure the side seals first, allowing the seal to run up past the top of the opening by at least 50mm.

Often, side seals are installed un-cut, the excess continuing up past the top of the opening as much as up to 150mm.

2



If the seals must be cut, mark the length then PULL the brush back, away from where the aluminium is to be cut. Cut the aluminium to length. Slide the brush back and cut to the same length as the aluminium using PLIERS or SIDE CUTTERS ONLY.

Cutting the brush with any type of snips, shears or saws will result in the filament dislodging out of the metal backing spline. Using pliers or side cutters to cut creates a crimp cut, effectively sealing the metal backing spline. As an extra precaution you may prefer to crimp the carrier at each end.

3



CAPTURE the side seals in the aluminium extrusion by withdrawing 100-150mm of the brush then creating a gentle sideways radius bend in the metal backing spline, the brush should be reinserted back into the aluminium and tested to see if it can be easily removed by hand.

Repeat the process until the brush cannot be removed without some effort. This is to prevent the garage door lifting the brush as the garage door opens.

This process is only required on the side seals

NOTE

Roller.

Installation instructions

4



Loosen guide lug bolts on guide tracks slightly

5



Slide #RTS system between guide and wall, then tighten guide lug bolts.

Repeat the procedure on the opposite side of the garage door opening.

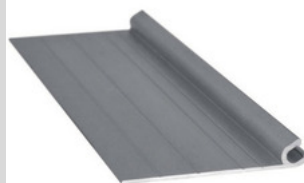
6



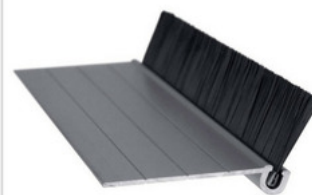
Measuring the width of the opening, cut the top seal aluminium to length after sliding the bristle brush back first. After confirming the aluminium is the correct length, cut the brush to match, using pliers or side cutters only.

Top seal options -

#3050 / Fit to lintel



#RT370/Fit to door



Roller.

Installation instructions

7



Pre drill holes into the carrier along the length at 300mm intervals, beginning and ending 50mm from either end.

8



Ensure the brush is directed upwards towards the door.

Holding the carrier in place, use the pre drilled holes to drill pilot holes into the structure, then fix the screws/rivets accordingly.

NOTE

When two lengths are required as the top seal, first use one length uncut, BUT withdraw 50mm of brush and cut it off, then replace the brush, leaving a 50mm void in the aluminium. Affix that section as described, then cut the last aluminium section to length, and cut the brush 50mm longer so that the 50mm protrusion will act as a link. Allowing a perfect join where the two lengths meet. Complete the procedure on the last section.

Roller.

Installation instructions

9



Test the garage door manually and make any necessary track adjustments.

Reconnect the auto opener and follow the instructions as per step 1 NOTE.

Roller.

Installation instructions

Clever
SEAL
Sealing Systems

Correctly installed, CLEVERSEAL systems will provide excellent service and extremely effective solutions to eliminating all those annoying, undesirable intrusions, dust, draughts, flying, crawling, slithering pests, and of course, seal out hot and cold winds.

The only maintenance we recommend is to regularly run a wood pencil along the full length of the seal when the garage door is open, to remove any collected particles of dust, plant debris or grit.

NOTE

All garage doors require regular service, especially the sectional overhead type. Adjustment to the tension springs or lifting cables should **ONLY** be attended to by a qualified garage door specialist.

SERIOUS INJURY OR DEATH can result in unqualified persons attempting adjustments with those components. It is recommended that the garage door be regularly serviced by a qualified specialist although the garage door should also be regularly checked by the owner, especially the lifting cables to observe any `fraying` of the wire strands, the owner should apply applications of aerosol silicon lubricant (not oil, grease, CRC or other penetrating, moisture disbursement type applications, Silicon or aerosol Tyre Shine products only) to all roller wheels, tracks, auto opener track and ALL garage door hinges once every three months.

This maintenance cycle will improve the garage door function, extend the auto opener life and enable the owner to identify any issues that require a qualified specialist to attend.

Need help?

Call: Australia 1300 887 438
New Zealand 0800 111 670

Email: info@cleverseal.com

Visit: www.cleverseal.com

Other products in the Cleverseal range

- Top of door seals
- Side seals
- Floor mounted seals
- Flame retardant seals
- Commercial/shed seals

Available in single lengths or kit sets to suit your garage door type and size.

