

The first job might feel a bit scary!
Leaving an approx. 1.5 cm (1/2 inch) seam allowance all round (from your basting stitches), cut out your embroidered stocking.



Pin this embroidered stocking shape to the fabric you are using for your stocking back. You need to pin right sides together.



Now cut your backing fabric to the same size as your stocking. Keep them pinned together. From here on, I'm going to refer to these 2 pieces as your 'stocking'.



You now need to use your stocking as a pattern to cut the fabric for your lining.

Fold your lining fabric in half (if you are using patterned fabric fold it so the right sides are together)

Now pin your stocking to the lining fabric (so at this point you have your stocking pieces pinned together and these in turn are pinned to your folded lining fabric)

Cut out your lining fabric, do not leave an additional seam allowance, your lining pieces need to be the same size as your stocking.



Now you need to remove JUST the pins that were securing the stocking to the lining pieces (but keep the pins in that are holding the stocking pieces together).

So now you should have your stocking pieces pinned together still and the lining pieces together but unpinned.

Pin your lining pieces together.

When you come to sew the lining you will need to leave a 10cm (4 inch) gap in the bottom (if you are sewing the half size stocking you can make this a bit smaller but bear in mind you need to turn your stocking through this gap later so don't make it tiny!) If you mark this out with pins it will help you to remember to leave a gap.

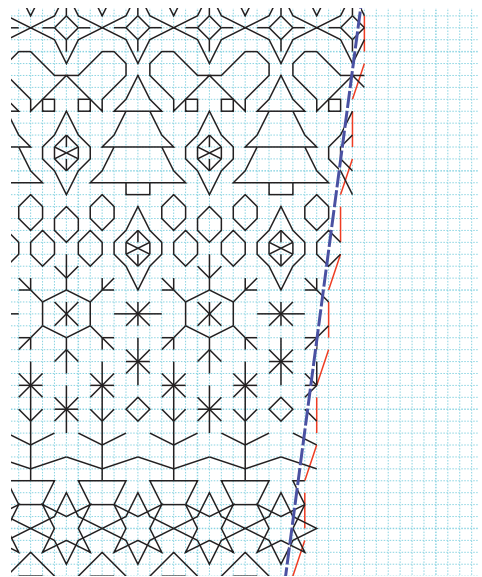


You now need to sew your stocking. You can do this by hand or machine. If stitching by hand I recommend using backstitch and making your stitches quite small for strength and neatness.



Start stitching in a corner, at the top, just inside your basting stitches.

As you stitch, you will need to use your basting stitches as a guide. As you can see from this section of the chart (where the basting stitches are shown in red) they wiggle in and out a little, so when you stitch up these parts, sew a line along (as shown here by the blue line of stitches) As you are now using a sharp needle, there is no need to stick to going through your Aida/evenweave only in the pre-existing holes, you can stitch wherever you like to create a smooth line.



Sew all around your stocking but leave the top unstitched. Remove pins and basting stitches apart from the ones that run across the top of the stocking as we will need these later!



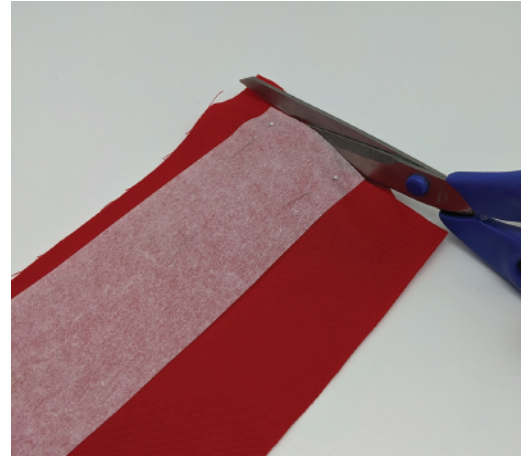
Next, you will be sewing the lining but before you start stitching there is something you need to do. It is important that the opening at the top of the lining is the same size as the opening at the top of your stocking, if they are different sizes it will make it tricky when you have to stitch them together later. So, line up the top of your stitched stocking with the top of your lining and use pins or a pencil to mark the distance between your stitched seams on your stocking.

Now you can sew your lining. Don't forget you need to leave a gap at the bottom of the foot and to leave the top unstitched. Once stitching is done, remove all the pins.



The next step is making the hanging loop.

Using some of the leftover fabric from either your backing or lining fabric cut out a rectangle approx 24 x 6 cms (9.5 x 2.5 inches), if you are making a smaller stocking you can make it a bit smaller if you wish. You can just draw the rectangle directly onto your fabric, or if easier, draw it on a piece of paper, cut it out, pin to your fabric and cut out



Fold in 10mm (1/2 inch) of the fabric along both of the long sides and press. If your fabric is patterned you need the right side out.



Now fold in half (so the edges you just folded in are enclosed) and press.

If using patterned fabric check the right side is facing out.



Stitch along the open edge. If you are hand stitching I recommend a single running stitch as it will be seen from both sides.



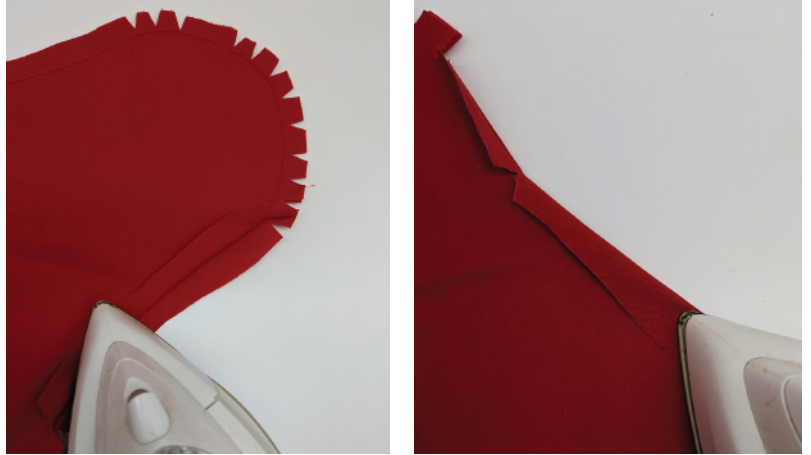
The next job is another scary one but will help your stocking look nice and neat when turned right side out. You need to carefully snip little triangles along all of the curved edges of your stocking and the lining, not right up to the stitches, but close (approx 3mm or 1/8 of an inch away) So, to be clear, anywhere the lines are not straight, snip!



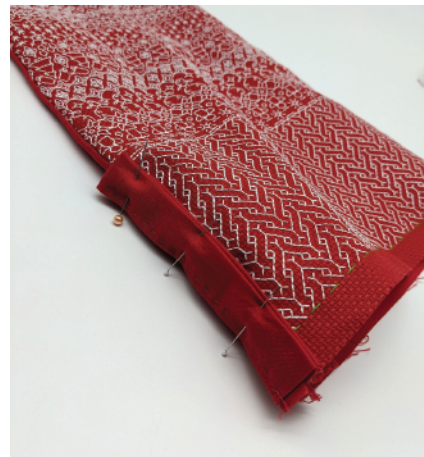
Press your stocking and then press all the seams open, this will give a neater finish at the end.



On the lining press the seams open along the opening in the foot of the lining (where you left a gap in your stitching)



Turn your stocking so the right side is now facing outwards then take your stocking loop and pin to secure it centrally along the back seam, with the loop facing down.



This is the magic bit. Put the stocking (including the loop) inside the lining



On the seam where your loop is pinned, line up the seams of the stocking with the seams of the lining and pin everything in place.



Line up and pin the other side seams and add some more pins around the top.



Now stitch around the top edge of the stocking the whole way around (again using your basting stitches as a guide, you don't have these stitches to guide you on the backing fabric, so just try to stitch across straight) Do some extra stitching where the loop is to reinforce it and ensure your stocking can hold any heavy presents!



Pull your stocking through the gap in the foot of the lining



Pin and sew the gap in your lining closed. As it won't be seen you can just stitch along the edge using any kind of stitching, I did invisible stitching, but any stitch will do as it will be hidden inside!



Put the lining inside the stocking and press again if needed and you are done!

