

———— 2023 botanical SFL – squares with cable border ————

Design size in stitches - 172 w x 172 h

Size on 14 count aida

31 x 31 cm
12.5 x 12.5 inches

Size on 16 count aida

27 x 27 cm
11 x 11 inches

Size on 18 count aida

25 x 25 cm
10 x 10 inches

 The Steady Thread Blackwork SFL  The Steady Thread Modern Blackwork Embroidery  @thesteadythread

———— www.thesteadythread.com ————

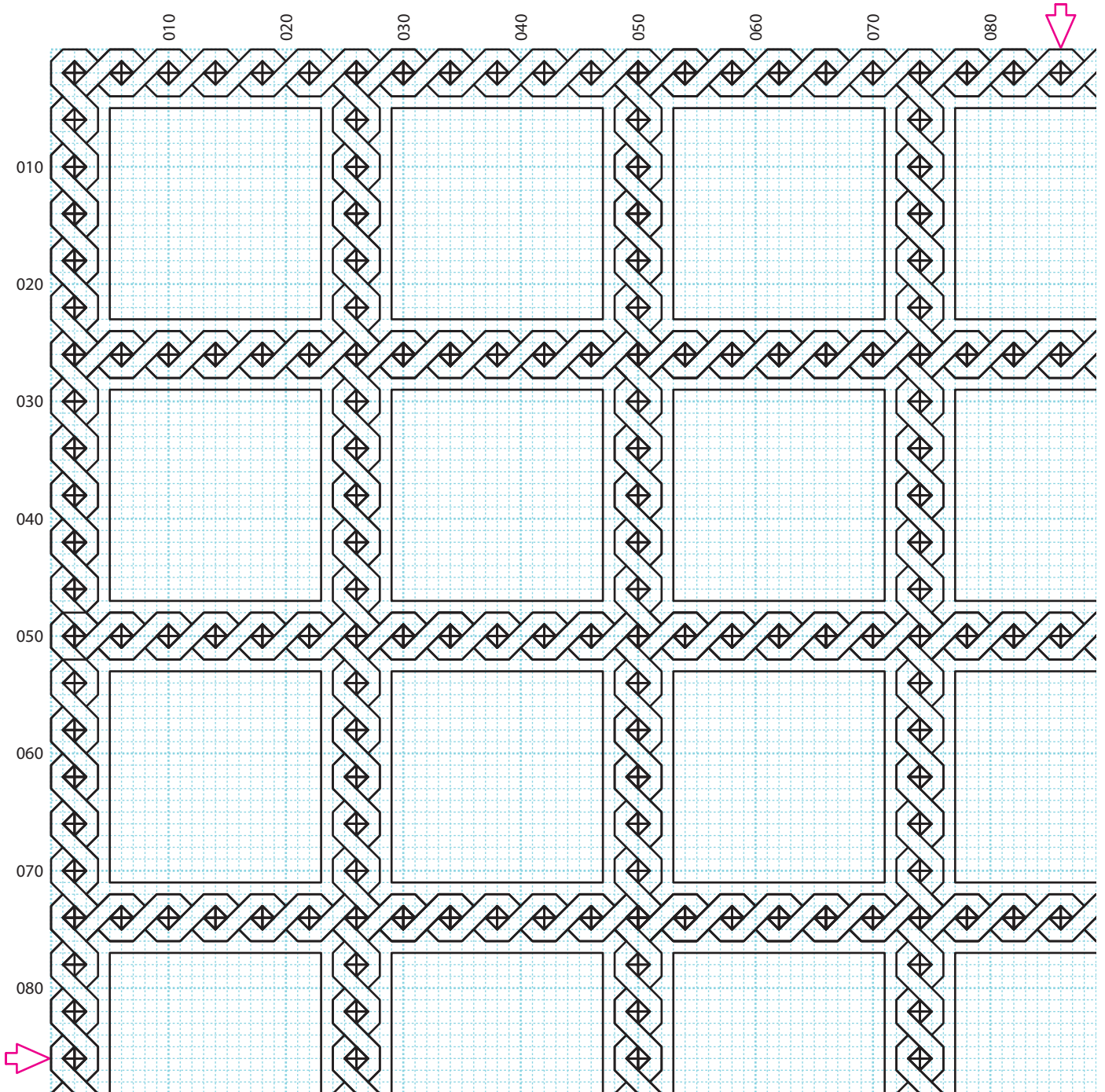
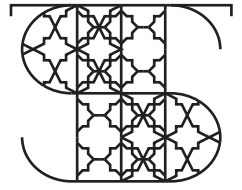
IMPORTANT Copyright notice © Copyright Clare Bradshaw 2022

All rights reserved. This pattern in all its variations remains copywritten work of Clare Bradshaw (trading as The Steady Thread). This pattern must not be resold, copied, edited, published, transmitted or uploaded in any way without express permission. for further details contact clare@thesteadythread.com



page 1 of 4
please note the
pattern includes
an overlap.

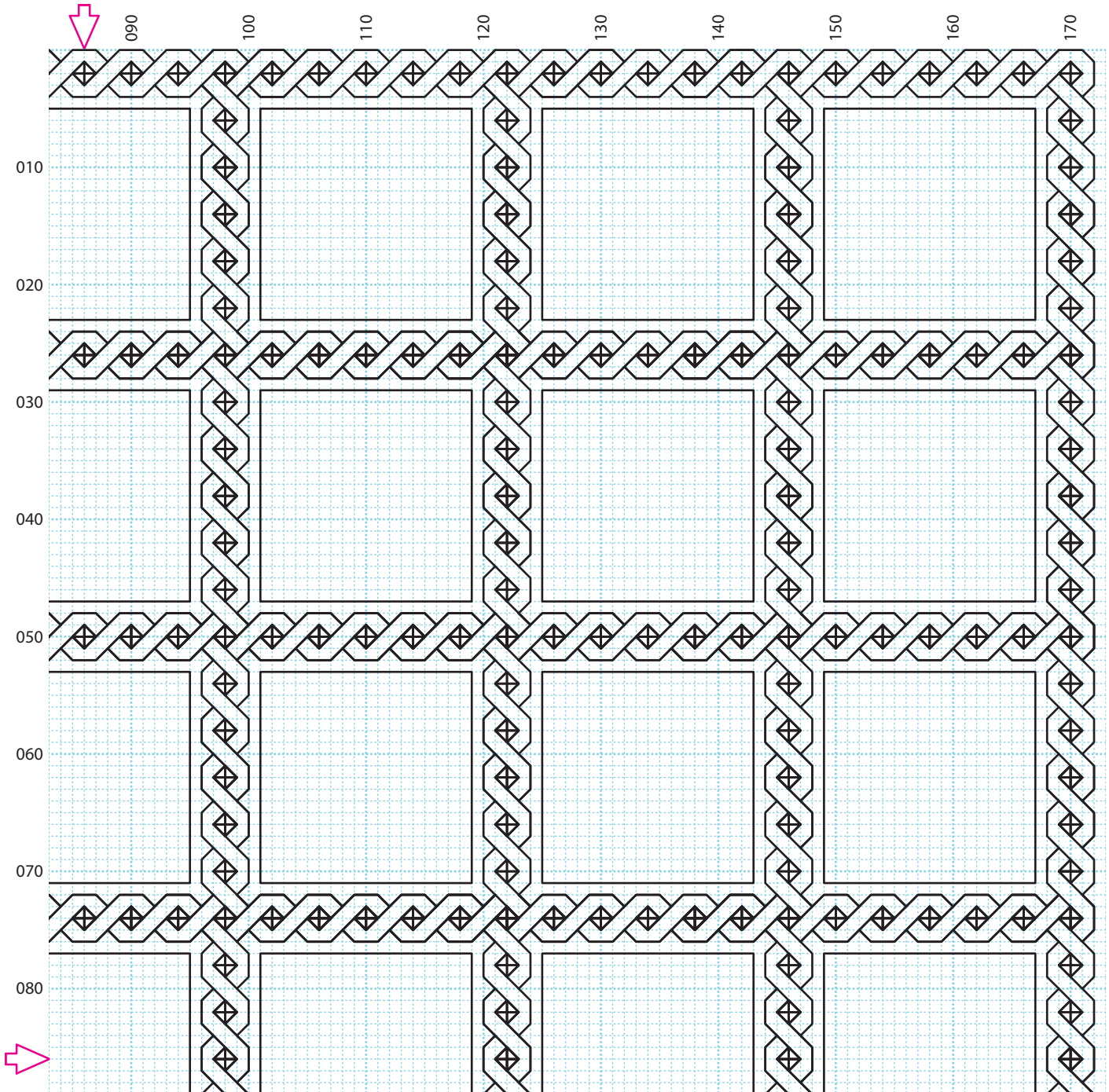
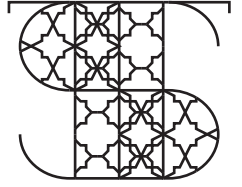
The
Steady
Thread





page 2 of 4
please note the
pattern includes
an overlap.

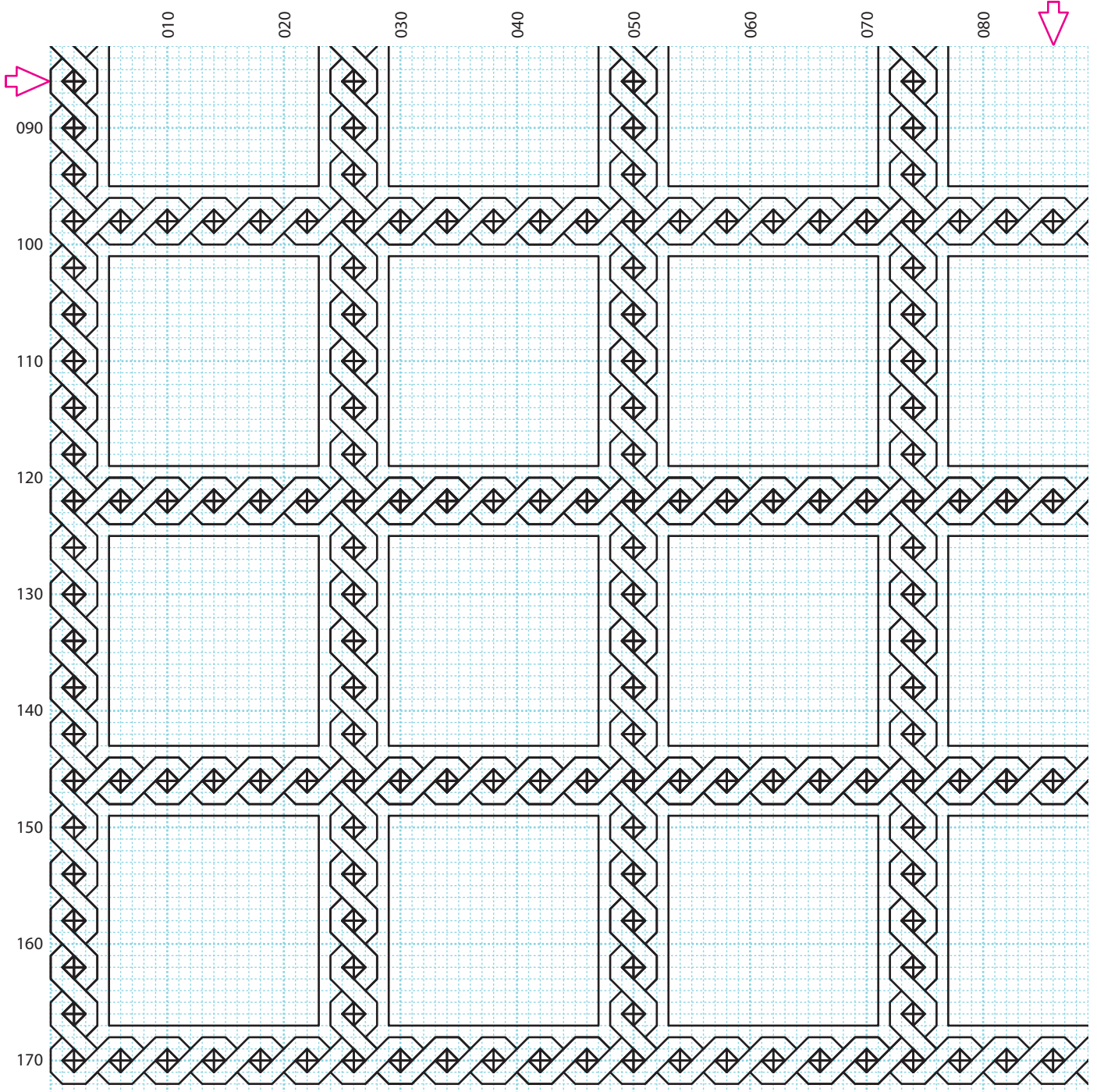
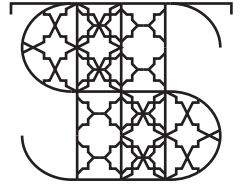
The
Steady
Thread

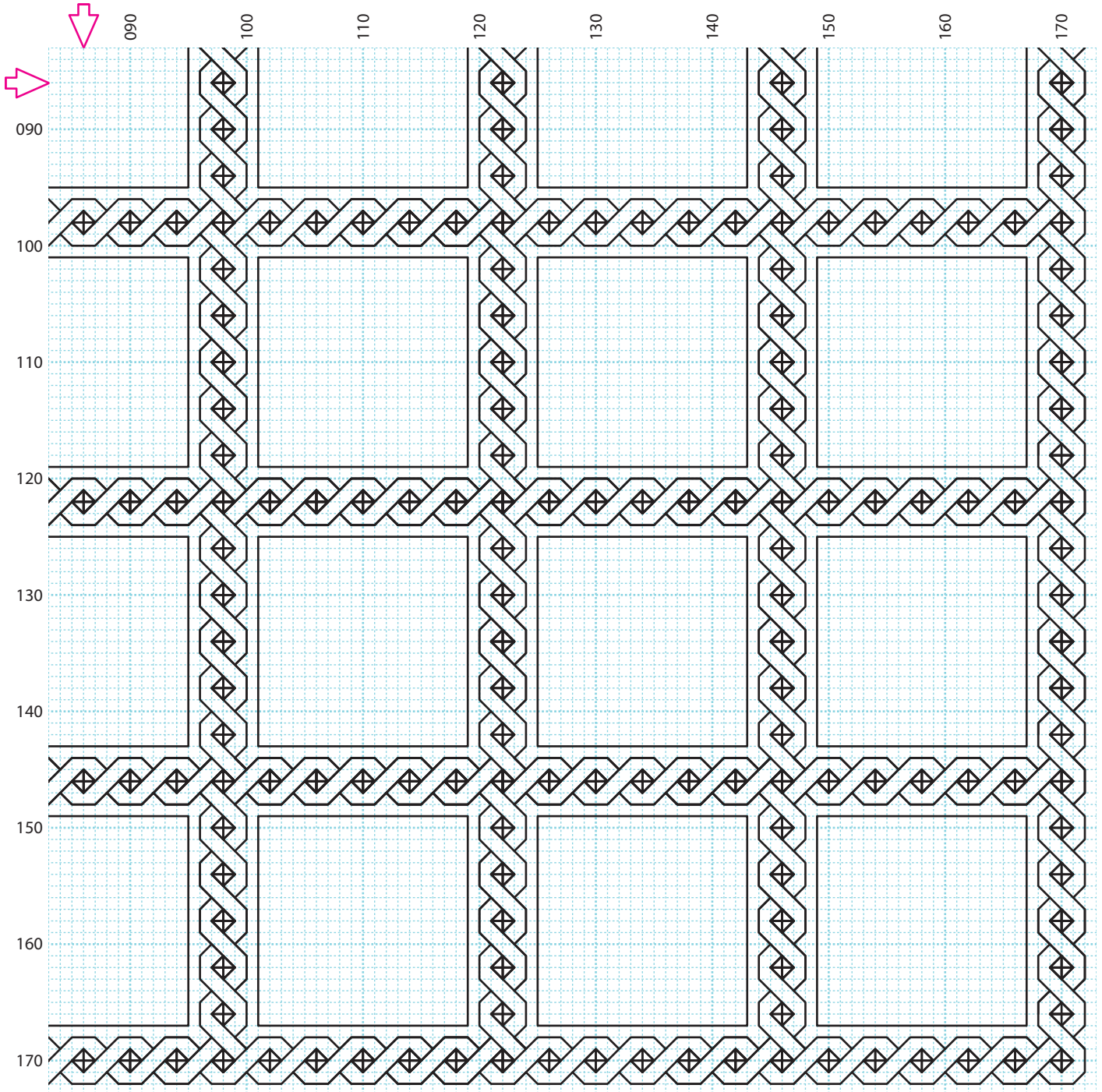




page 3 of 4
please note the
pattern includes
an overlap.

The
Steady
Thread





Key

1	2	3	4	5	6	7
8	9	10	11	12	13	14
15	16	17	18	19	20	21
22	23	24	25	26	27	28
29	30	31	32	33	34	35
36	37	38	39	40	41	42
43	44	45	46	47	48	49