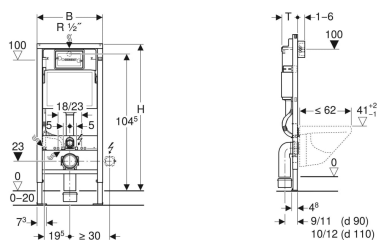


Geberit Duofix frame for wall-hung WC, 112 cm, with Delta concealed cistern 12 cm



Application purposes

- For drywall construction
- For installation in part or room-height prewall installations
- For installation in room-height installation walls
- For wall-hung WCs with connection dimensions in accordance with EN 33:2011
- For wall-hung WCs with projection up to 62 cm
- For floor constructions 0–20 cm

Characteristics

- Self-supporting frame, powder-coated
- Frame top open
- Frame with $\varnothing 9$ mm drilling holes for fastening in wood frame construction
- Frame with holes to receive Geberit Duofix wall anchors for elements with frame top open
- Frame prepared for support brackets for WC ceramic appliances with small contact surfaces
- Galvanized feet

Scope of delivery

- Angle stop valve R 1/2", with adaptor ring
- Protection box for service opening, made of polystyrene foam
- 2 distance bolts
- 2 wall anchors
- Connection set for WC, $\varnothing 90$ mm
- Connection bend 90° made of PE-HD, $\varnothing 90$ mm

- Feet adjustable 0–20 cm
- Foot plates made of plastic
- Foot plate depth suitable for installation in U-profiles UW 50
- Connection bend can be mounted without tools
- Concealed cistern with front actuation
- Concealed cistern, fully insulated against condensation
- Cistern fulfils standard requirements in accordance with EN 14055, Class II
- Immediate post flush possible with factory setting
- Water supply connection on the rear or top centre
- With conduit pipe for feed pipe for connection of Geberit AquaClean shower toilets
- Fastening option for electrical connection

Technical data

| | |
|--------------------------------------|-----------------|
| Maximum operating temperature, water | 25 °C |
| Flush volume, factory setting | 5.8 and 3 l |
| Flush volume large, adjustment range | 4.5 / 6 / 7.5 l |
| Flush volume small, adjustment range | 3-4 l |

| Art. no. | B | H | T |
|--------------|-------|--------|-------|
| 458.103.00.1 | 50 cm | 112 cm | 12 cm |

Accessories

- Geberit set of support brackets for WC ceramic appliances with small contact surfaces



- Any boarding must be fixed tight up against the face of the Duofix frame and screwed directly to the frame
- Flush valve features settings to enable either a 6 l and 3 l flush or a 4.5 l and 3 l flush. Note: must be used with pans designed for low volume flush
- The cistern can be operated with used water (rainwater) provided it is passed through a filter system first