

Talis S
Single lever basin mixer 80 with push-open waste set
 Finish: **Chrome** Article Number: **72011000**



Description

product features

- consists of: single lever basin mixer, waste set
- ComfortZone 80
- projection: 97 mm
- spout height: 68 mm
- handle variant: pin handle
- spray type: normal spray
- maximum flow rate at 3 bar: 5 l/min
- ceramic cartridge
- temperature limitation adjustable
- suitable for continuous flow water heaters
- push-open waste set G 1¼
- material waste set: metal
- connection type: G ¾ connections
- connection dimension: DN15
- EU taxonomy: max. 6 l/min - Substantial Contribution (SC) possible
- EPD Basin Faucets

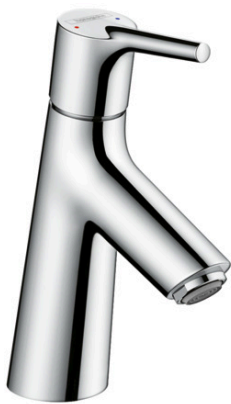
Technology



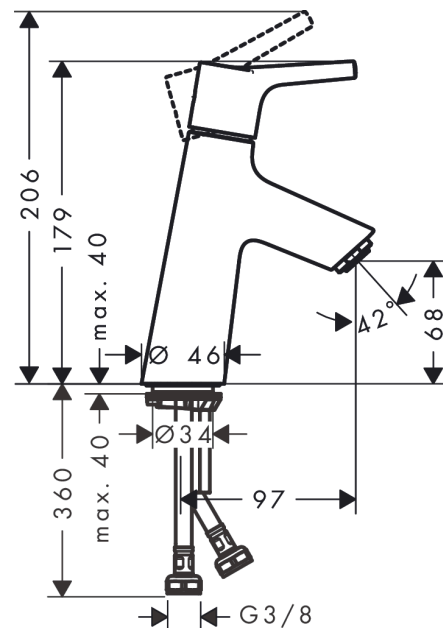
Certificates / Sustainability



Product image



Scale drawing

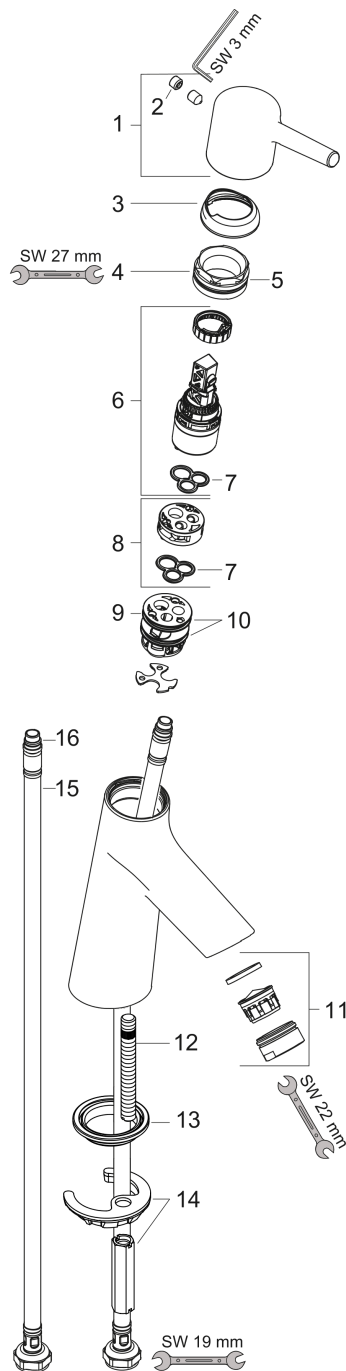


Talis S
Single lever basin mixer 80 with push-open waste set
 Finish: **Chrome** Article Number: **72011000**



Exploded Drawing

Year of production: >05/17



Talis S

Single lever basin mixer 80 with push-open waste set

Finish: **Chrome** Article Number: **72011000**



Spare part list

Year of production: >05/17

Pos.	Description	Article Number	PC	PU
1	handle	92626000	8	1
2	screw cover	95704000	1	1
3	flange	92625000	8	1
4	nut	92627000	6	1
5	O-ring 27x1,5	92527000	4	1
6	cartridge, assy	97685000	11	1
7	seal	98865000	8	1
8	adapter for cartridge	92628000	6	1
9	adapter for cartridge	98866000	8	1
10	O-ring 23x2	98398000	1	1
11	aerator M24x1 (5 l/min)	13185000	98	1
12	screw M8 x 68	97736000	2	1
13	seal Ø 42	98722000	2	1
14	fixing set	96016000	8	1
15	connection hose 450 mm M8x0,75 G3/8	97206000	8	1
16	O-ring 6,6x1,6	93019000	1	1
a	push-open waste set	50100000	98	1