

# HAMILTON

— MOTOR COMPANY —

## LEXUS IS/RC 13-17IS 16-18RC MONITOR SCREEN INSTALLATION M A N U A L



# INSTALLATION NOTICE

- (1). Install by professionals and strictly follow this guide to ensure the safety and normal use of the product.
- (2). Turn OFF ACC before installation and wait 90 seconds for ACC OFF to disconnect the negative battery. Do not unplug the power plug in ACC ON state.

## INSTALLATION TOOLS



1	Screwdriver (M6)
2	8mm/10mm Sleeve
3	Car seesaw
4	Screwdriver (M3)

# DISASSEMBLE THE MAINFRAME

## PREPARATION BEFORE INSTALLATION



Protect against damage.

## TAKE APART OEM RADIO

1



Use the warping plate to lift off the front baffle of the center control screen, and use the No. 10 sleeve to remove the two screws above.

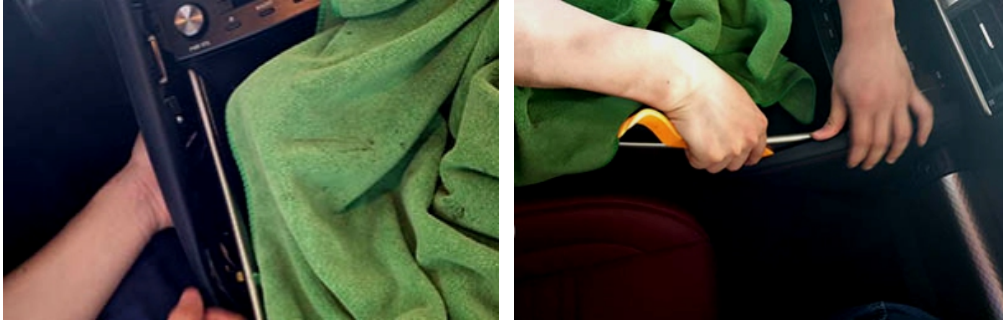
2



Remove the screen assembly and unplug the cable.

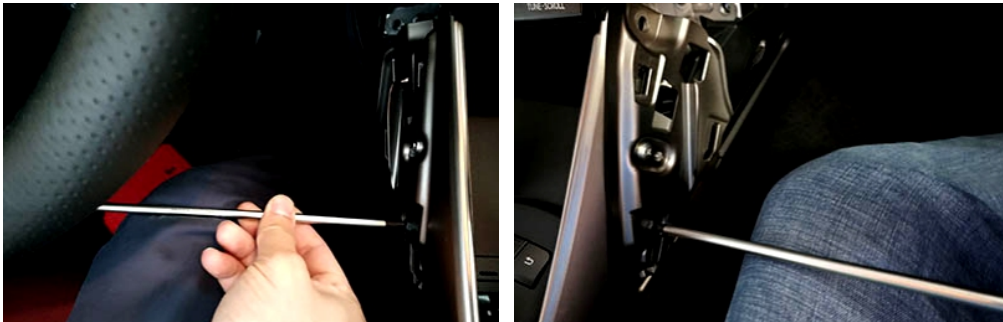
## TAKE APART OEM RADIO

3



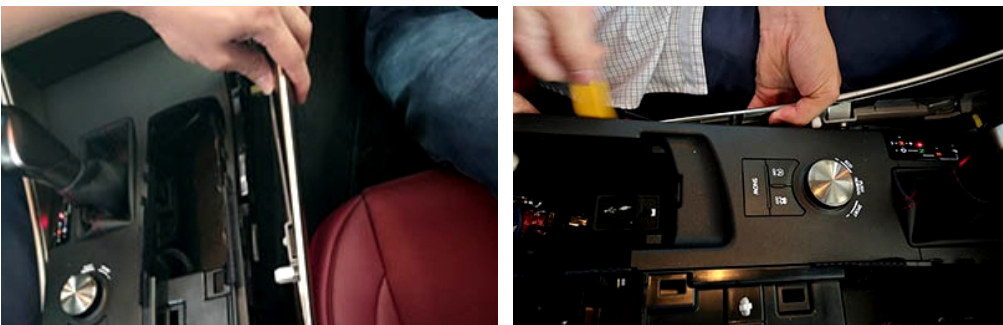
Remove both sides of the armrests.

4



Remove the screws on both sides of the armrest.

5



Remove the silver decorative panels on both sides of the armrest.

## TAKE APART OEM RADIO

6



Pull the armrest box back for easy access to the screws on the disc machine and easy access to the disc unit.

7



Remove the disc unit, remove the plug (take a photo to record the original car wiring)

8



GPS antenna position as shown above (rear passenger seat)

# INSTALLATION AND WIRING

## INSTALL MONITOR SCREEN AND HARNESS

1



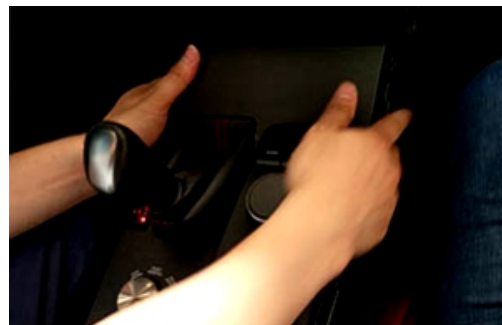
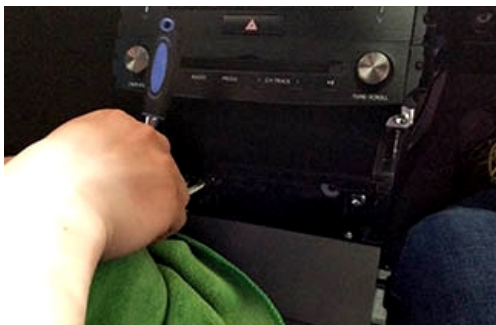
GPS antenna position as shown above (rear passenger seat), speaker's position

2



USB position.

3



Fasten the screws on the disc assembly and return the armrest to its position.

## INSTALL MONITOR SCREEN AND HARNESS

4



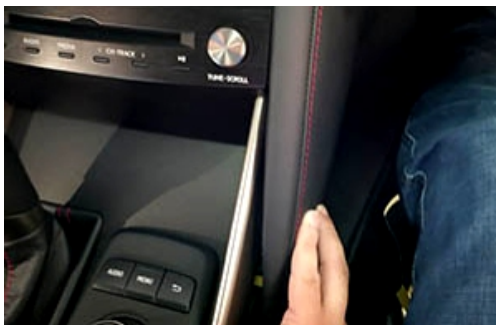
Lock the screws on both sides of the armrest box.

5



Lock the screws on both sides of the armrest box, Insert the left card.

6



Insert the right side card of the armrest box, remove the original car bracket, and install it on the new screen assembly.

## INSTALL MONITOR SCREEN AND HARNESS

7



Remove the original car bracket, install it on the new screen assembly, the screen assembly is stuck in, and lock the screws.

8



Screw the screen assembly and snap the new front baffle into place.

9



Check whether there is any missing installation, installation is complete.



# INSTALL MONITOR SCREEN AND HARNESS

## BACKUP CAMERA CONNECTION

