

HAMILTON

— MOTOR COMPANY —

2010 - 2015
CHEVY
CAMARO
APPLE CARPLAY
HEAD UPGRADE
KIT INSTALLATION
M A N U A L





2010-2015 CHEVY CAMARO APPLE CARPLAY HEAD UNIT UPGRADE KIT

PARTS

A. MICROPHONE

Most installations don't use this as there is an alternate mic pre-built into the unit.

B. 4G ANTENNA

Most installations don't use this, as people typically use their phones for music/data now and don't need to have dedicated data right on the unit. You can install this and add an option sim card to the slot on harness K to give the unit its own 4G functionality.

C. FM RADIO ANTENNA ADAPTER

D. DOOR CHIME

E. GPS ANTENNA

This is typically not necessary, as most people use Apple/Waze/Google Maps which uses the phone's GPS data.

F. USB PORT (OPTIONAL)

You can use this to install an external USB port for your phone that will be power-only. (Plugs directly into the back of the new head unit).

G. USB PORT (OPTIONAL)

You can use this to install an external USB port for your phone that will be power-only. (Plugs directly into the back of the new head unit).

H. BACKUP CAMERA WIRE

If you install an aftermarket backup camera, you can use this adapter to plug it directly into your new head unit.

I. MAIN WIRING HARNESS

Plus into the vehicle harness and the new unit using multiple harnesses (see later instructions for this).

J. CANBUS ADAPTER

This black box plugs onto harness "I" and interprets signals for HVAC and other vehicle functions.

K. AUDIO WIRING HARNESS

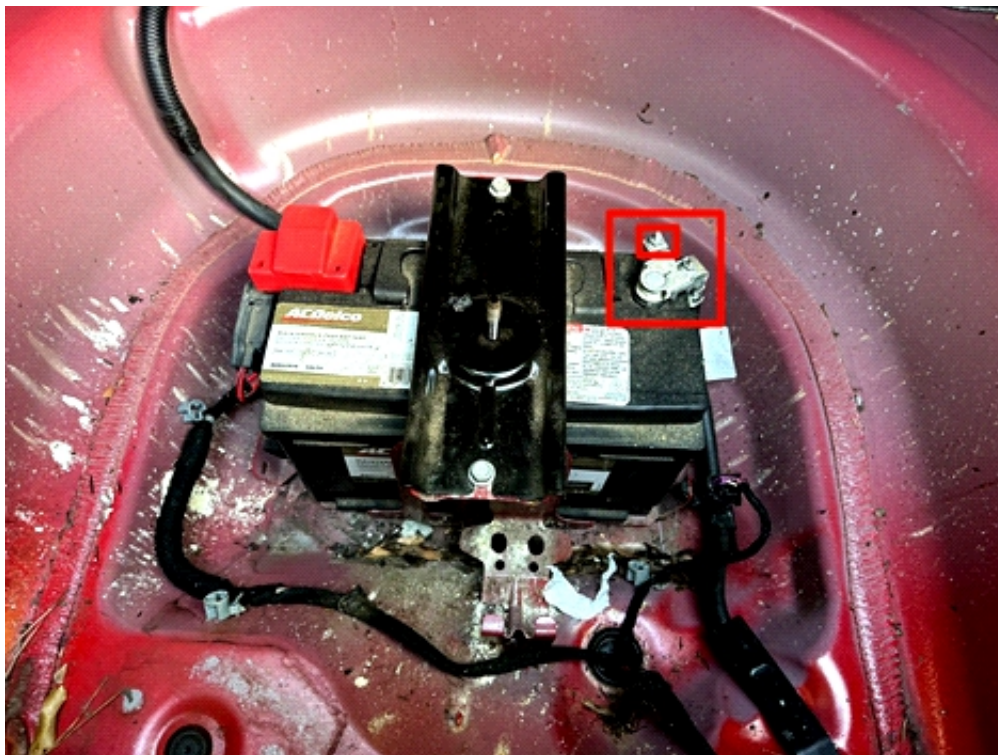
Plugs directly into the new head unit.

1



Turn your ignition to the “on” position and slide your gear shift to the “M” position. This will provide you the room to remove and work on your radio.

2



Open your trunk and spare tire well to disconnect the negative terminal of the battery and remove power to the car. You will use a 10mm socket to disconnect the negative terminal.

3



Use your fingernails to grip the back border of your gear shift plastic housing and pop it up. Then use credit cards and gently run along the edges of the gear shift plastic housing to remove it completely.

4



Disconnect the wiring harness on the back of the gear shift plastic housing.

5

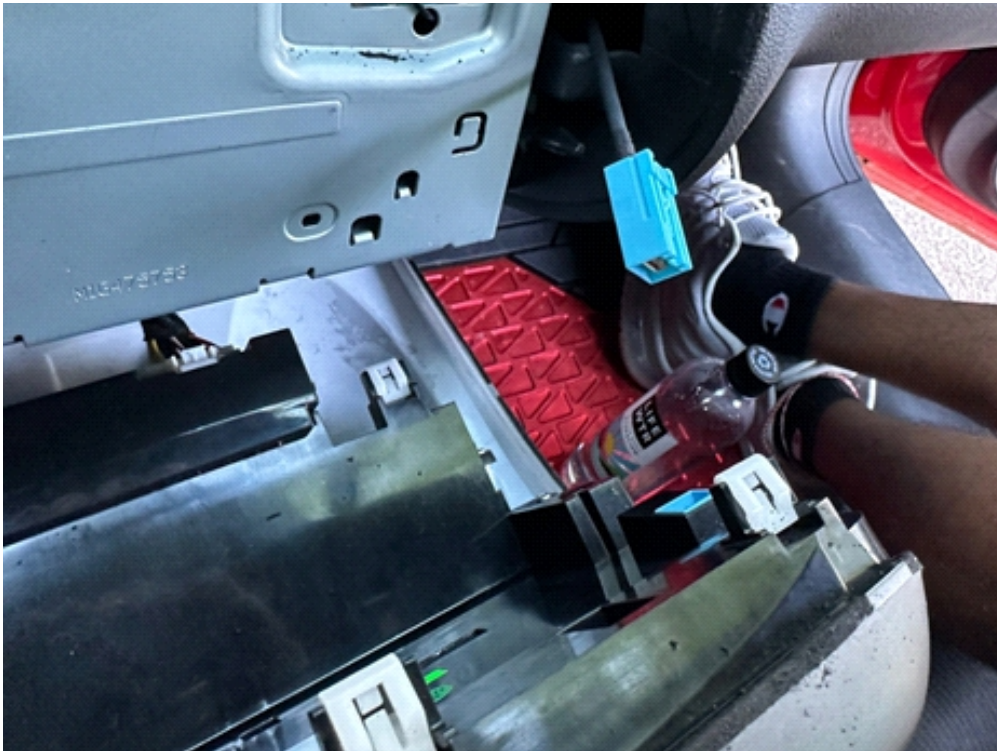


Remove two 7mm bolts on the bottom of the radio assembly (they were concealed by the plastic gear shift housing).

6



Insert a credit card or plastic pry tool along the top line of the radio. You might need a few credit cards. Then you can grip your hands on the climate controls and pull the radio out. You will feel it dislodge when the clips release. Then pull the radio gently out and let it rest down.



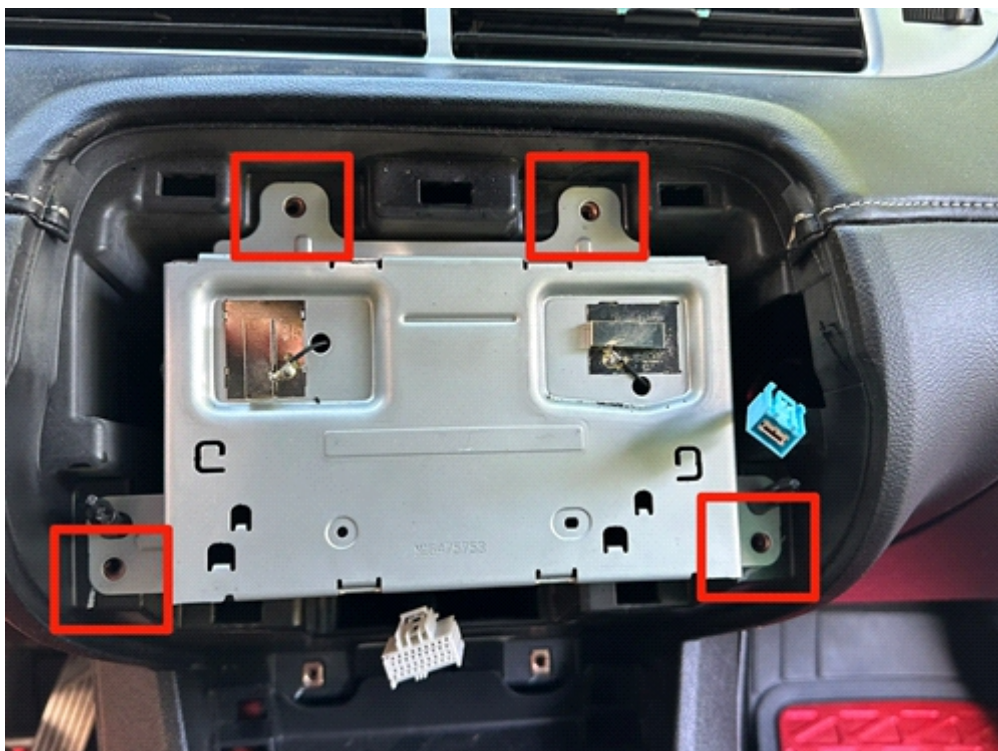
Disconnect the small blue wire on the back of the radio and let it hang down.

8



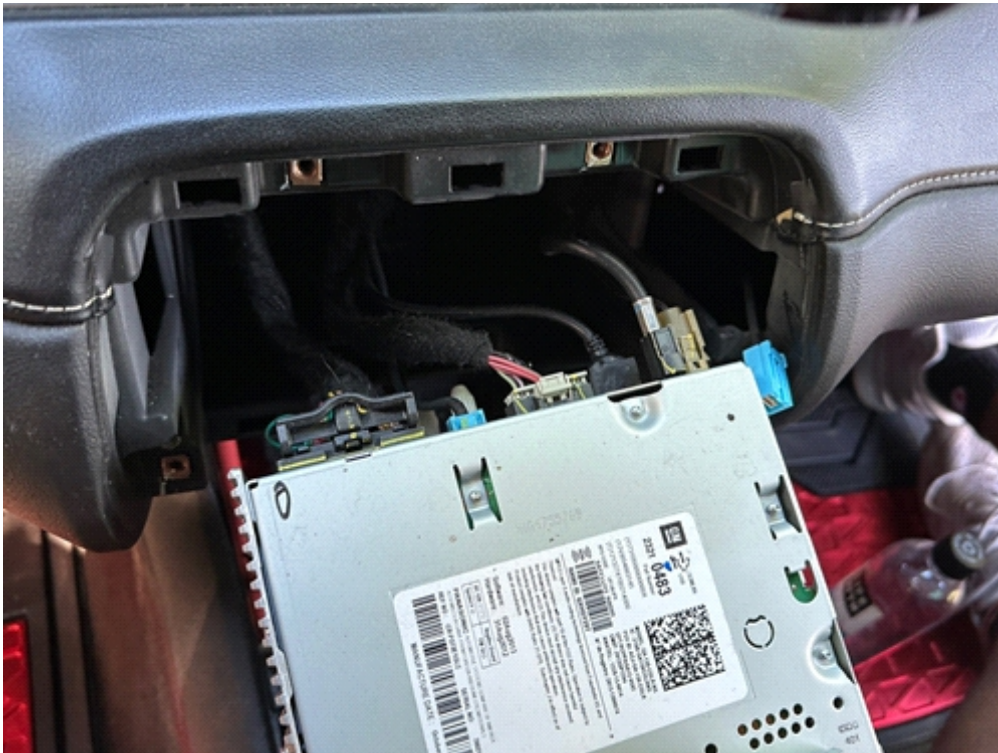
Now that the blue wire is disconnected, you need to remove the screen assembly. If you see under the radio, the blue-arrow flap is tucked behind the red-arrow flap. By pushing upwards on the bottom portion of the head unit, you will free the blue-arrow flap. This takes quite a bit of force to wiggle these two apart. Then lift upwards of the radio and remove it entirely.

9



Now that the screen assembly is removed, you need to unscrew four 7mm bolts holding the radio unit into the car.

10



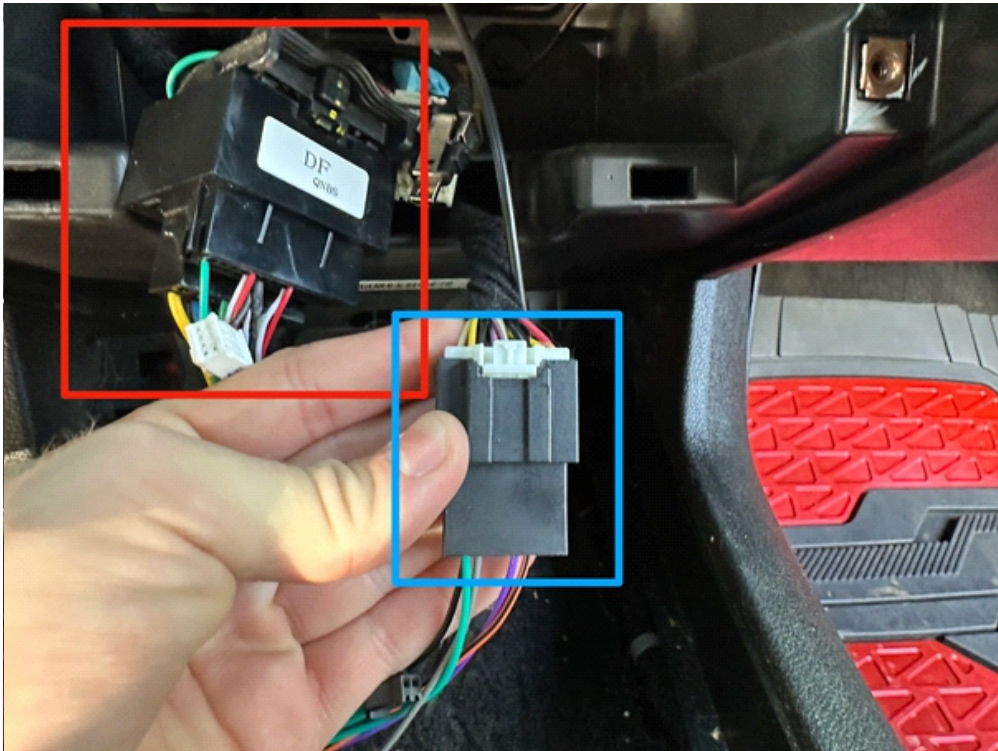
Remove the radio unit and disconnect all the wiring harnesses from the back of the unit. Set it aside.

11



Now that the old unit is fully removed, you will start to reassemble the wiring harnesses for the new unit. Things will only fit together one way and are all plug-n-play.

12



Install the largest chunky harness into the corresponding large back receiver (red box in picture). Install the midsize white harness (only one will fit for each) into the other corresponding black receiver (blue box in picture).

13

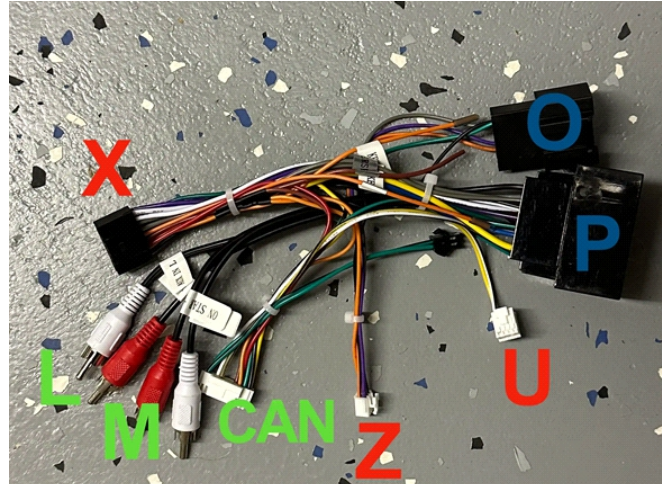
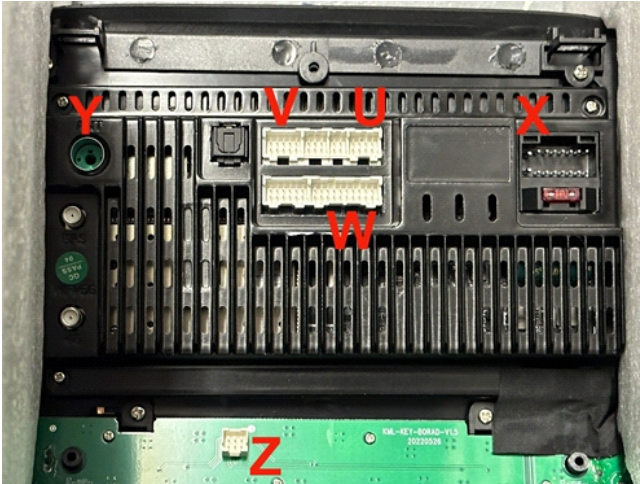


Install the door chime onto its corresponding vehicle harness (it will only plug onto one) On most Camaros the wire it plugs onto is green



Connect the antenna wiring harness to the tiny corresponding black receiver in the vehicle. This will plug into the antenna slot on the back of the new head unit.

CONTINUE TO CONNECT THE WIRING HARNESSSES AND THEN CONNECT THEM TO THE NEW HEAD UNIT. SEE THE BELOW IMAGE WITH SOME OF THE CORRESPONDING CONNECTIONS:



1. On the head unit, connect Y to the FM Radio Antenna Adapter
2. Connect X, Z, and U on the head unit to the corresponding connections on the main harness.
3. On the head unit, V connects to the optional backup camera harness (H in the first picture).
4. On the main harness, CAN connects to the CANBUS adapter box (J in the first picture).
5. On the main harness L&M are labeled "Audio Out L" and "Audio Out R." Connect these to the corresponding "Audio In L" and "Audio In R" on the Audio Wiring Harness (K in the first picture).
6. The Audio Wiring Harness (K in the first picture) plugs into slot W on the back of the head unit.
7. The remaining slots between V and U are available for the optional USB adapters.
8. The optional microphone plugs into slot "Mic" on the Audio Wiring Harness.
9. The optional GPS and 4G antennas thread onto the ports on the back of the head unit.

16



After all the connections are made, double check everything before buttoning it back up. When you are ready to close things up, make sure all the wires and the CANBUS box are tucked behind the unit where the larger radio used to sit.

17

Carefully lift the new unit up, tuck the plastic flap below the radio back behind that slot (it takes a bit of effort to work it back into that slot). Sometimes it is better to do it one side at a time. Then re-bolt the six bolts you removed and replace the negative battery cable onto your battery.

We recommend you power your car on before fully re-installing the radio to check and make sure all the settings and HVAC work.

18



1. Once your unit is back in the car, you are ready to go! Checkout our video on the product description page to setup Apple Carplay.

<https://www.hamiltonmotorcompany.com/products/2009-2015-chevrolet-camaro-apple-carplay-conversion-kit-fifth-generation>