

CERTIFICATE OF ANALYSIS

PRODUCT NAME: CBD Softgels
PRODUCT STRENGTH: 10 mg
LOT NUMBER: 2019201
BEST BY DATE: 1/10/2022
SOFTGEL LOT NUMBER: [GC1020-04](#)

Physical Attributes

Test	Method	Specification	Results
Color	SOP-100	Golden to Amber	PASS
Odor	SOP-100	N/A	PASS
Appearance	SOP-100	Dry, ovoid softgel capsules in container with lid and shrinkband	PASS
Primary Package Eval.	SOP-132	Container clean and free of filth. Container caps tight and shrink bands intact	PASS
Secondary Package Eval.	SOP-132	Labeling Compliance Checked, Cartons sturdy and clean. Sufficient cushion material exists. Box taped and secure.	PASS

Review of Third-Party Analysis

Panel	Method	Specification	Results	Pass/Fail
Potency - Total CBD	SOP-111	9.5-12.5 mg CBD LOQ**: 10 PPM† (0.001%)	10mg	PASS
Potency - D9-THC	SOP-111	None Detected LOQ: 10 PPM (0.001%)	ND	PASS
FL Compliant Pesticide Panel	SOP-111	WIP-100008 : Product specification for Softgels, Oregon Action limits apply	ND	PASS
Microbial - Stec E.Coli	SOP-111	Complies with USP 61/62	Below LOD	PASS
Microbial - Salmonella	SOP-111	Complies with USP 61/62	Below LOD	PASS
Microbial - Aspergillus	SOP-111	Complies with USP 61/62	Below LOD	PASS
CA Compliant Heavy Metal Panel	SOP-111	Arsenic (As): ≤1.5 PPM Cadmium (Cd): ≤0.5 PPM Mercury (Hg): ≤1.0 PPM Lead (Pb): ≤0.5 PPM	ND	PASS

* Level of Quantitation, † Parts Per Million

Quality Certified by:

Darcie Moran

 Darcie Moran

7/23/2020

_____ Date



total cannabinoids	Δ^9 -THC	THCa	total THC
10 mg	0 mg	0 mg	0 mg
per	CBD	CBDa	total CBD
capsule	10 mg	0 mg	10 mg



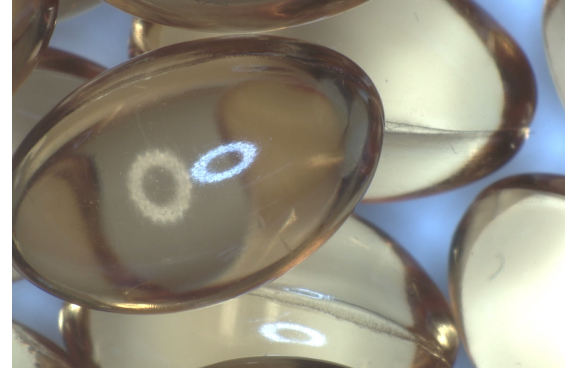
Stillwater Laboratories

Lot# GC1020-04

<https://portal.a2la.org/scopepdf/4961-01.pdf>

Sample Handling

test ID	sample wt	19.0 g
type	order	7621
lab ID	sample date	6/22/2020
unit capsule	unit weight	0.7 g



Methods

	method	equipment
weights	MSP-7.3.1.3	AUX120.1
potency	MSP-7.5.1.5	LC-2030
terpenes	MSP-7.5.1.7	QP2020/HS20
pesticides	MSP-7.5.1.8	LC-8060
mycotoxins	MSP-7.5.1.8	LC-8060
microbial	MSP-7.5.1.9	Hardy Diag
solvents	MSP-7.5.1.6	QP2020/HS20
metals	MSP-7.5.1.1	ICPMS2030

Potency	per capsule	estimated error	Terpenes	%	estimated error	%	estimated error	%	estimated error
tetrahydrocannabinolic acid (THCa)	.01%	0 mg ± 0.01 mg	terpenes not tested / not required						
Δ^9 -tetrahydrocannabinol (Δ^9 THC)	0%	0 mg ± 0.01 mg							
Δ^8 -tetrahydrocannabinol (Δ^8 THC)	0%	0 mg ± 0.01 mg							
tetrahydrocannabivarin (THCv)	0%	0 mg ± 0.01 mg							
cannabidiolic acid (CBDa)	.02%	0 mg ± 0.01 mg							
cannabidiol (CBD)	1.47%	10 mg ± 0.08 mg							
cannabidivarin (CBDv)	.02%	0 mg ± 0.01 mg							
cannabigerolic acid (CBGa)	0%	0 mg ± 0.01 mg							
cannabigerol (CBG)	0%	0 mg ± 0.01 mg							
cannabinol (CBN)	0%	0 mg ± 0.01 mg							
cannabichromene (CBC)	0%	0 mg ± 0.01 mg							

Solvents	MT limit	0FR11	LOQ	Pesticides (MT)	MT limit	0FR11	LOQ	Pesticides (other)	0FR11	LOQ
solvents not tested / not required				abamectin		0.00 ppm	<10ppb	acephate	0.00 ppm	<10ppb
				acequinocyl		0.00 ppm	<10ppb	acetamiprid	0.00 ppm	<10ppb
				bifenazate		0.00 ppm	<10ppb	aldicarb	0.00 ppm	<10ppb
				bifenthrin		0.00 ppm	<10ppb	azoxystrobin	0.00 ppm	<10ppb
				chloromequat cl.		0.00 ppm	<10ppb	boscalid	0.00 ppm	<10ppb
				cyfluthrin		0.00 ppm	<80ppb	carbaryl	0.00 ppm	<10ppb
				diaminozide		0.00 ppm	<10ppb	carbofuran	0.00 ppm	<10ppb
				etoxazole		0.00 ppm	<10ppb	chlorantraniliprole	0.00 ppm	<10ppb
				fenoxycarb		0.00 ppm	<10ppb	chlorpyrifos	0.00 ppm	<10ppb
				imazalil		0.00 ppm	<10ppb	clofentazine	0.00 ppm	<10ppb
				imidacloprid		0.00 ppm	<10ppb	cypermethrin	0.00 ppm	<10ppb
				myclobutanil		0.00 ppm	<10ppb	diazinon	0.00 ppm	<10ppb
				paclobutrazol		0.00 ppm	<10ppb	dichlorvos	0.00 ppm	<10ppb
			pyrethrins		0.00 ppm	<10ppb	dimethoate	0.00 ppm	<10ppb	
			spinosad		0.00 ppm	<10ppb	etofenprox	0.00 ppm	<10ppb	
			spiromesifen		0.00 ppm	<10ppb	fenpyroximate	0.00 ppm	<10ppb	
			spirotetramat		0.00 ppm	<10ppb	fenprophamid	0.00 ppm	<10ppb	
			trifloxystrobin		0.00 ppm	<10ppb	fludioxonil	0.00 ppm	<10ppb	

Toxic Metals	MT limit	0FR11	LOQ
arsenic	2 ppm	0.0 ppm	<10ppb
cadmium	4.1 ppm	0.0 ppm	<10ppb
lead	1.2 ppm	0.0 ppm	<10ppb
mercury	0.4 ppm	0.0 ppm	<10ppb

Comments

Target concentration 10mg, 5g capsule

Microbial	MT limit	0FR11	LOQ
<i>E. coli</i>	10 CFU	0 CFU	<10 CFU/g
Salmonella sp.	10 CFU	0 CFU	<10 CFU/g
molds	10000 CFU	0 CFU	<10k CFU/g
Aflatoxin B1,B2,G1,G2	20 ppb	0 ppb	<20 ppb
Ochratoxin A	20 ppb	0 ppb	<20 ppb

• All testing was completed onsite at 6073 US93N, Olney MT • Potency (cannabinoid concentration) is calculated from the equation: [cannabinoid] = [cannabinoid]_{HPLC} x volume_{dilution}/m_{dry}. Terpene concentration is calculated from the equation: [terpene] = (terpene mass)_{GCMS} / m_{dry}. ••• Decarboxyted cannabinoid concentration is calculated from the equation XXX_{total} = 0.877 x XXXa + XXX •••• Standards are used to calibrate the resulting data and estimate error using a standard estimate of error method; this is combined with error from weighing and dilution using the propagation of error formula s_g² = Σ (∂f/∂i)²s_i² where i is the contributor to error. The 95% confidence range is calculated from the equation: (concentration) ± t_{CL90} x s_g. Sampling error is not

Certified by:

Ron Brost

Ron Brost, PhD PEng (Chem)
Director
6073 US93N, Olney MT 59927
406-881-2019 rdb@stwlabs.com

malathion	0.00 ppm	<10ppb
metalaxyl	0.00 ppm	<10ppb
methiocarb	0.00 ppm	<10ppb
methomyl	0.00 ppm	<10ppb
oxamyl	0.00 ppm	<10ppb
permethrins	0.00 ppm	<10ppb
phosmet	0.00 ppm	<10ppb
piperonyl butoxide	0.00 ppm	<10ppb
prallethrin	0.00 ppm	<10ppb
propiconazole	0.00 ppm	<10ppb
pyridaben	0.00 ppm	<10ppb
spiroxamine	0.00 ppm	<10ppb
tebuconazole	0.00 ppm	<10ppb
thiacloprid	0.00 ppm	<10ppb
thiamethoxam	0.00 ppm	<10ppb



1755 Victory Blvd. Glendale, CA 91201
 Tel: 818.547.3221 Email: acculab@accubclabs.com
www.accubclabs.com

To:	
COA No.:	M-JO071720-01
COA Date:	07/22/20
Sample Rec'd Date:	07/17/20
ISO/IEC 17025:2017 Standard	Page 1 of 1

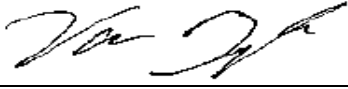
MICROBIOLOGICAL CERTIFICATE OF ANALYSIS

Sample Description: *Softgel Capsule 10 mg*
 Sample Batch/Lot No.: 2019201
 ACCU Laboratory Ref.: 0778312
 Purchase Order No.: N/A
 Test Method: USP
 Notes: N/A

Analysis:

Results:

Total Plate Count:	<10 CFU / g
Yeast & Mold Count:	<10 CFU / g
Bile-Tolerant g- Bacteria (coliforms):	Negative
<i>Escherichia coli</i> :	Negative
<i>Salmonella</i> :	Negative

Approved By: 
 Vano Baghdasarian, Laboratory Director

The results of this test relate only to the samples tested. This test report shall not be reproduced except in full, without written approval of the lab. ACCU Labs shall have no liability to anyone with respect to any interpretations or uses of the COA report, decisions made, or actions taken as a result of or based on the data reported.
 Abbreviations: g -: gram negative; g +B: gram positive Bacilli; g +C: gram positive Cocci; TPC: Total Plate Count; TNTC: Too Numerous to Count