

Built-In Sensor to Automate Your Workflow

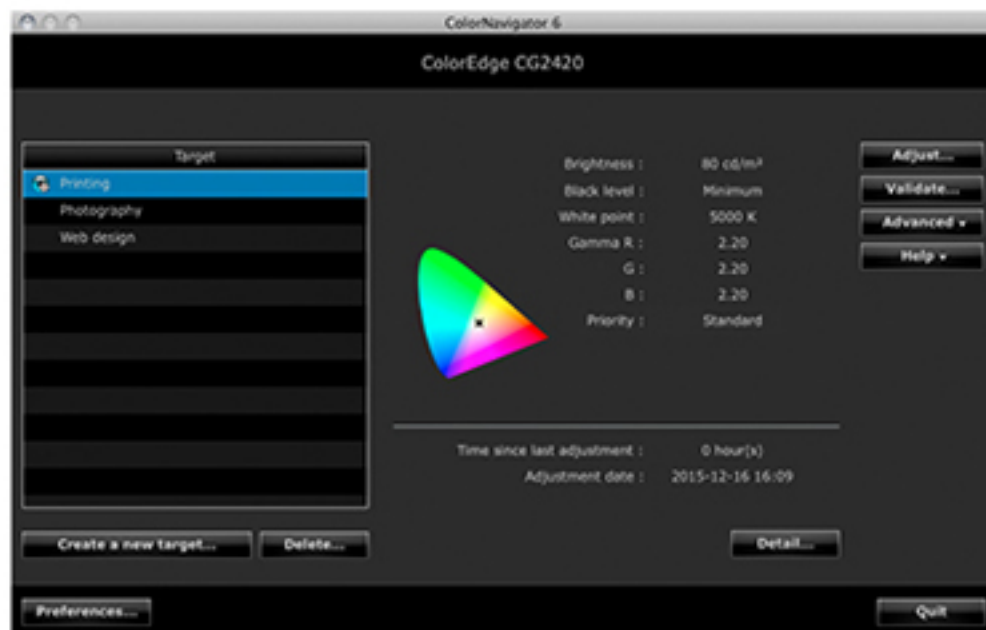
Automate your calibration with the sensor that is housed within the front bezel. The sensor swings onto the screen only when calibrating, eliminating the need for a third-party calibration device. It even operates while the monitor is in portrait mode.



SelfCalibration sensor swings over the screen only when calibrating

ColorNavigator 6 Color Management Software

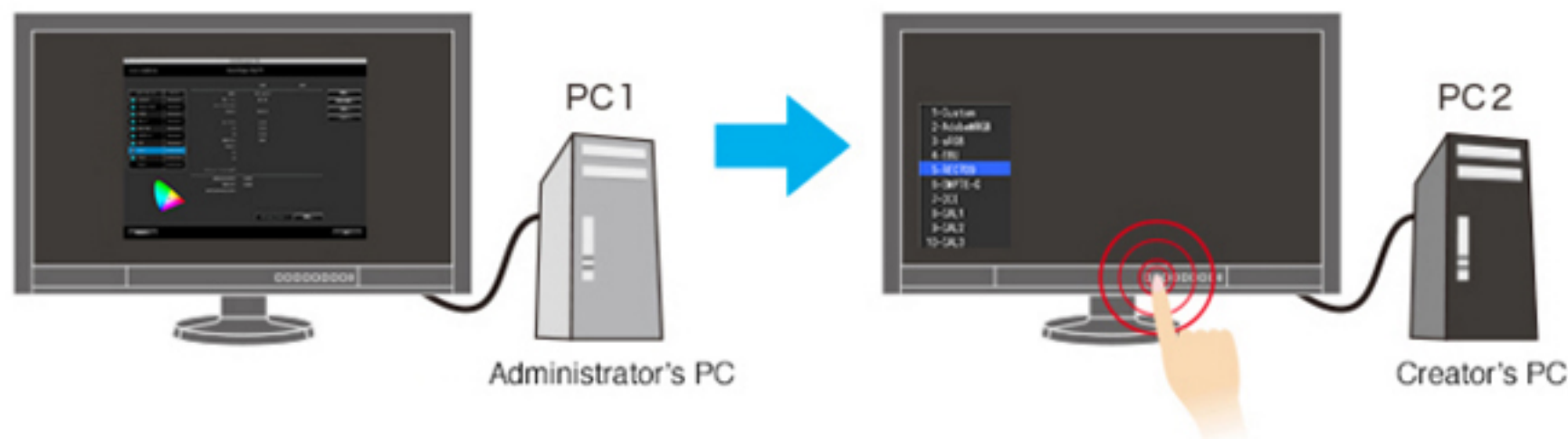
To properly manage color in your work, it is necessary to ensure your monitor maintains consistent settings. The bundled ColorNavigator 6 software allows you to easily carry out calibration. Simply select the desired preset or assign values for brightness, white point, and gamma. The built-in sensor directly utilizes the monitor's look-up-table and creates an ICC profile within minutes.



ColorNavigator NX Quality Control Software

The ColorEdge CG2420 supports ColorNavigator NX quality control (QC) software. It offers asset management of client ColorEdge monitors and covers calibration, emulation, built-in sensor correlation, and color mode settings. With ColorNavigator NX, calibration information is saved to the monitor instead of the PC's operating system so you do not have to recalibrate if connecting to more than one PC. The software is most effectively used with EIZO's ColorNavigator Network solution.

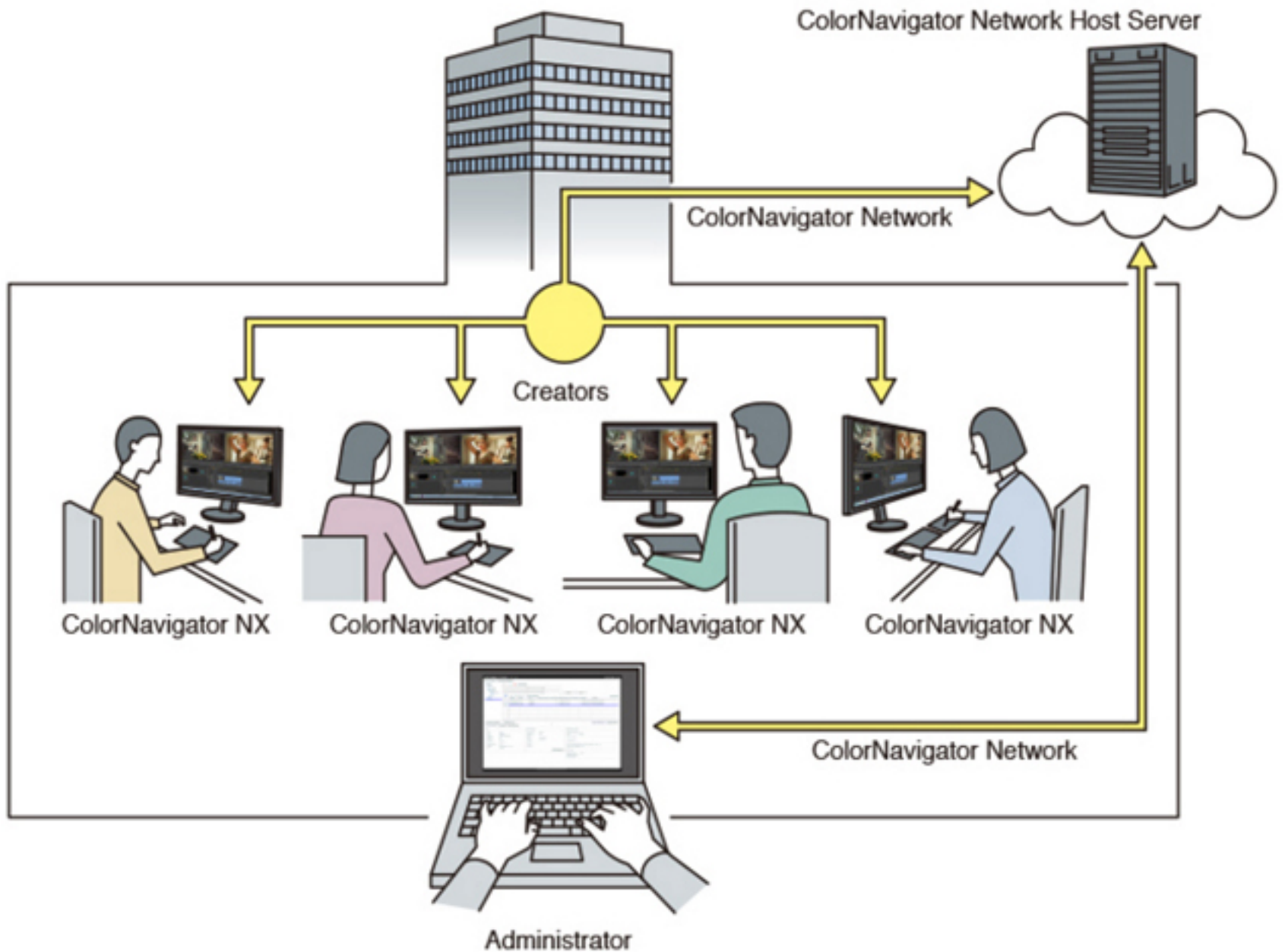
ColorNavigator™ NX



ColorNavigator Network Quality Control Software

ColorNavigator Network provides centralized quality control of ColorEdge monitors that have ColorNavigator NX installed. Administrators can set color modes, schedule self-calibration, register or adjust asset management settings, and other tasks whether the monitors are local or remote. ColorNavigator Network is hosted on a secure cloud server to free you from the initial investment and running costs of providing your own server.

ColorNavigator™ Network



See How Other Devices Display Color with Media Emulation

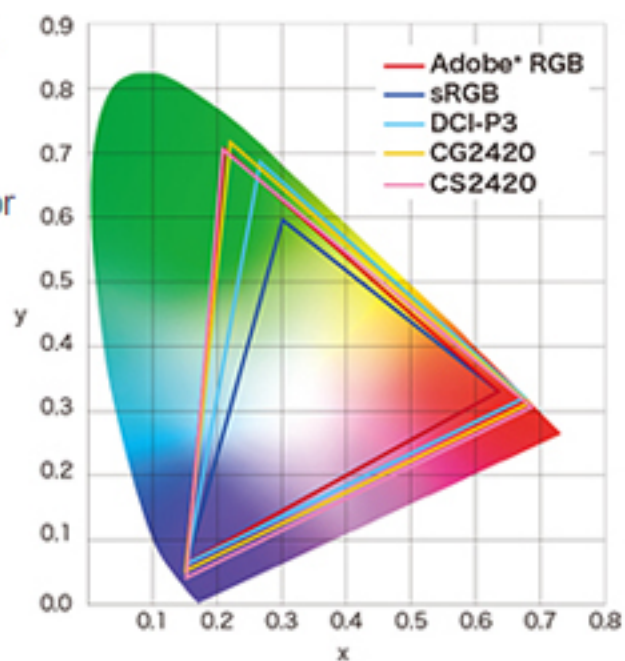
ColorNavigator 6 emulates the color characteristics of other media devices such as tablets, smartphones, notebook PCs, and other LCD/CRT monitors. With a spectrophotometer, ColorNavigator 6 reads the emulated device's color patches as they appear in the web browser and creates an ICC profile. By using this profile with a ColorEdge CG monitor, content creators can see how their clients view color on their respective devices.



Features for Creative Work

Vivid Colors Reproduced to Industry Standards

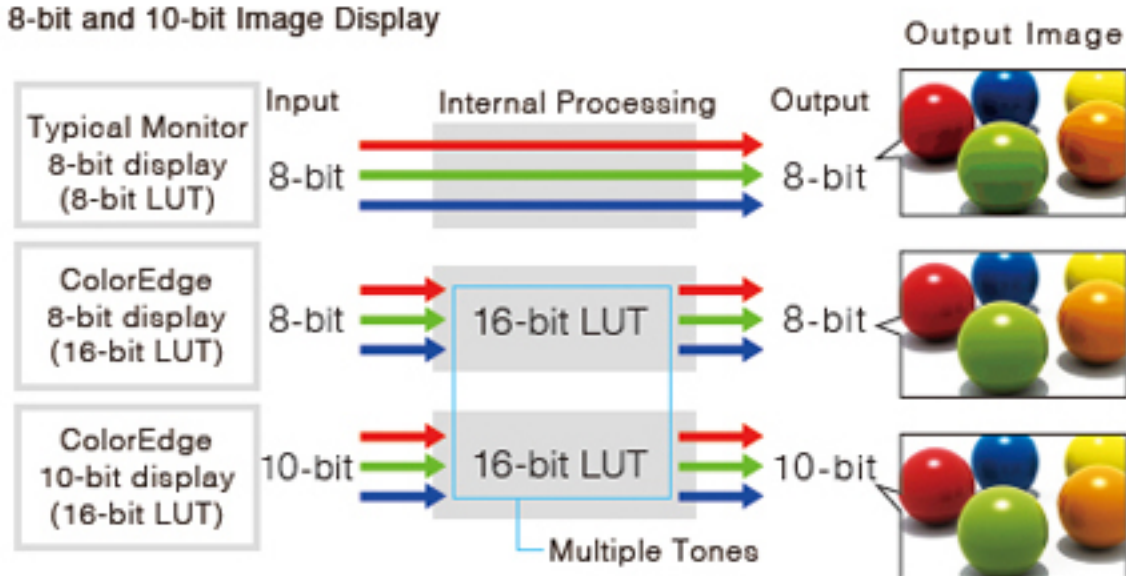
The wide color gamut of the ColorEdge CG2420 reproduces almost the entire Adobe RGB color space so images shot in Adobe RGB will be displayed correctly. Photos of vibrant blue skies and lush green forests are reproduced faithfully in a way that monitors limited to an sRGB color space cannot display. The wide color gamut also ensures reproduction of almost the entire ISO-coated and US web-coated CMYK color spaces used in printing.



10-bit Simultaneous Display

Using the DisplayPort or HDMI inputs, the ColorEdge CG2420 offers 10-bit simultaneous display* from a 16-bit look-up-table (LUT) which means it can show more than one billion colors simultaneously. This is 64 times more colors than you get with 8-bit display, resulting in smooth color gradations and reduced Delta-E between two adjacent colors.

8-bit and 10-bit Image Display



**A graphics board and software which support 10-bit output are also necessary for 10-bit display. Equipment that supports Deep Color is necessary with the HDMI inputs.*

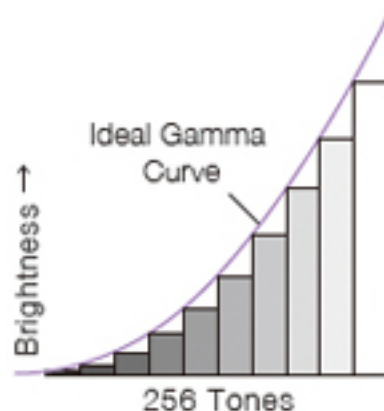
Adjusted at the Factory for Smooth Color Gradations

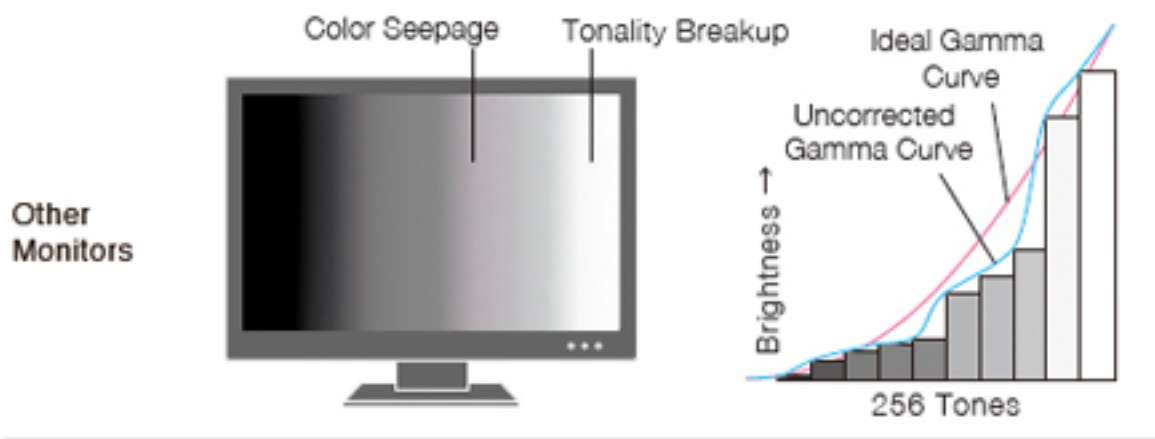
The gamma level for each ColorEdge monitor is adjusted at the factory by measuring the R, G, and B gamma values from 0 - 255, then using the monitor's 16-bit look-up-table (LUT) to select the 256 most appropriate tones and achieve the desired value. This ensures the smoothest color gradations in your images.

Gamma Curve

Smooth Gradation

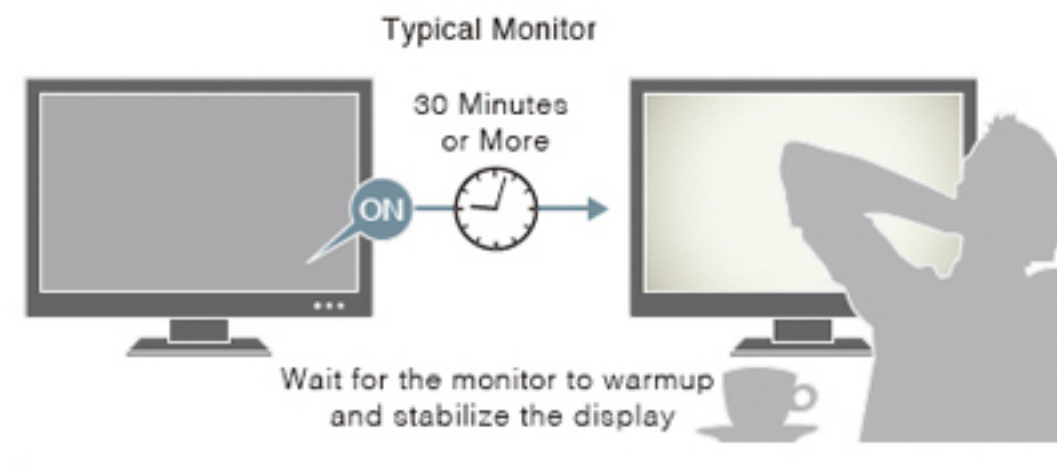
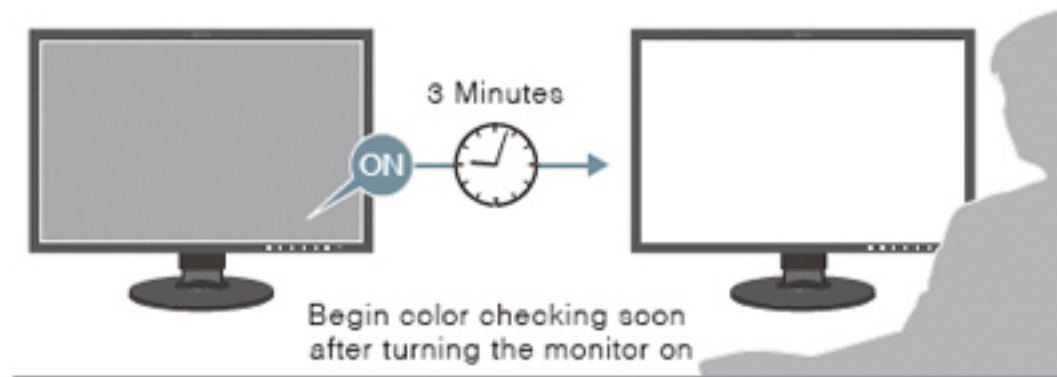
ColorEdge





Stable Color in Just 3 Minutes

A typical monitor takes 30 minutes or more for its brightness, chromaticity, and tone characteristics to stabilize. The ColorEdge CG2420 takes a mere 3 minutes. Whether you are working in a studio or taking the monitor with you on location, you get reliable color display soon after turning the monitor on.



Uniformity from Corner to Corner

Fluctuations in brightness and chromaticity on different parts of the screen are a common trait of LCD monitors. To counteract this, the ColorEdge CG2420 is equipped with EIZO's patented digital uniformity equalizer (DUE) technology to ensure a Delta-E difference of 3 or less across the screen. DUE also counterbalances the influences that a fluctuating temperature may have on color temperature and brightness for stable image display.

Screen Uniformity and Color Temperature Changes



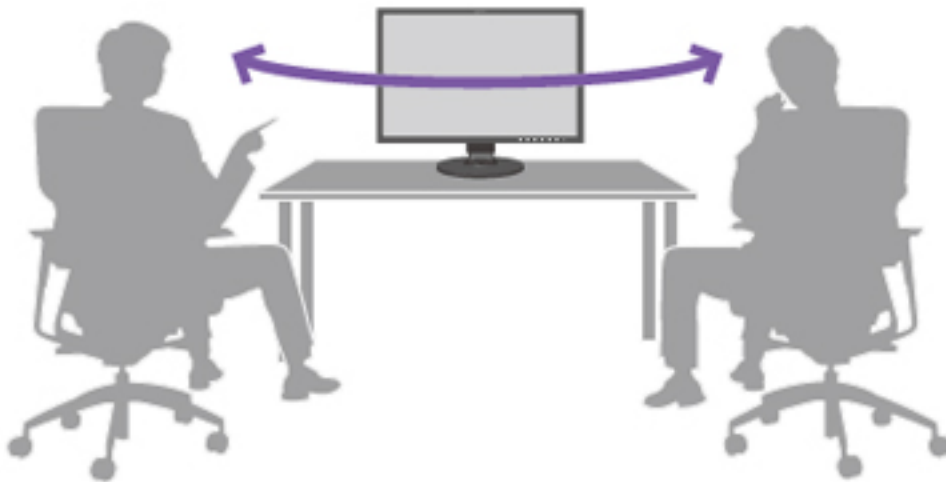
ColorEdge



Typical Monitor

Wide Viewing Angles with IPS Panel

The 178° wide viewing angles afforded by the IPS panel technology allow two or more people to view the screen at once with little change in color or contrast.



Feature for Video Editing and Post Production

True Black Display

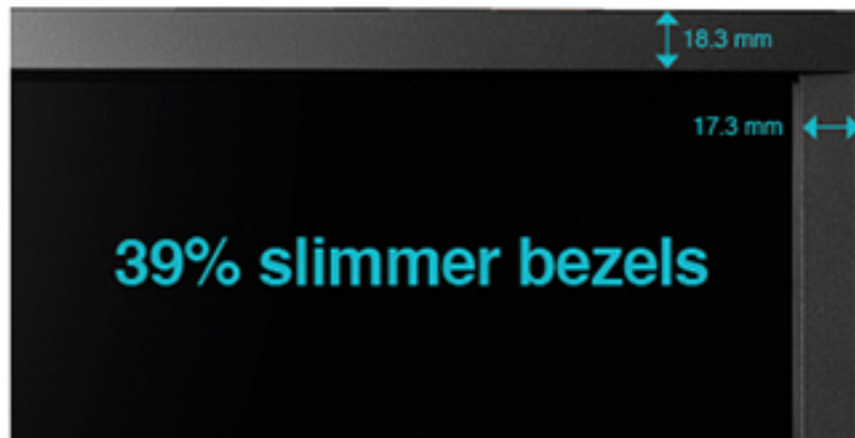
In compliance with the DCI standard, the ColorEdge CG2420 offers a high contrast ratio of 1500:1 for producing true blacks that are otherwise difficult to display on a typical LCD monitor. When viewing the screen from an angle in a dimly lit room, dark tones typically appear washed out due to the display characteristics of LCD backlights. The CG Series is equipped with a film which allows tones to retain their depth even when viewed from an angle.



Sleek, User-Friendly Design

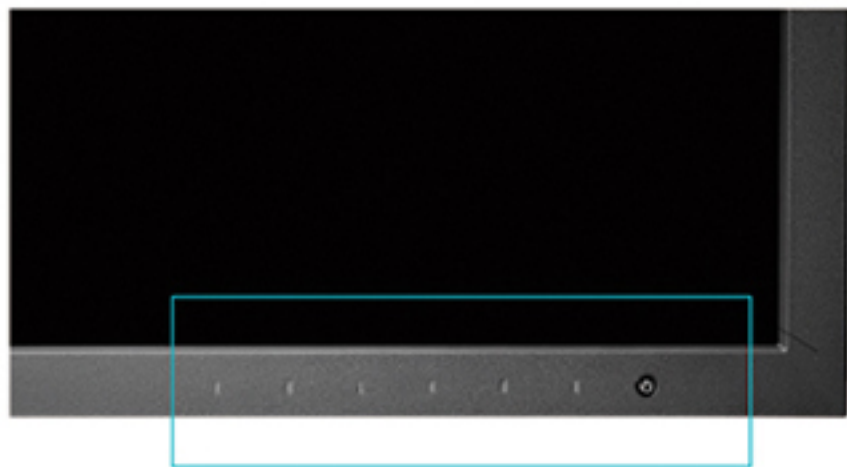
Slimmer Bezels

The slim cabinet features unobtrusive frames that are 39% slimmer than its predecessor's so you can focus more on the screen.



Seamless Electrostatic Switches

The flat design uses electrostatic switches on the front bezel in place of traditional buttons for seamless access to monitor settings.



Built-in Carrying Handle

A carrying handle on the back of the monitor allows you to easily move it from one location to another.



Easy-Access USB Ports

The monitor is equipped with three easy-to-access USB 3.0 ports, including one port for battery charging devices such as a smartphone.



Features for Comfort and Ease-of-Use

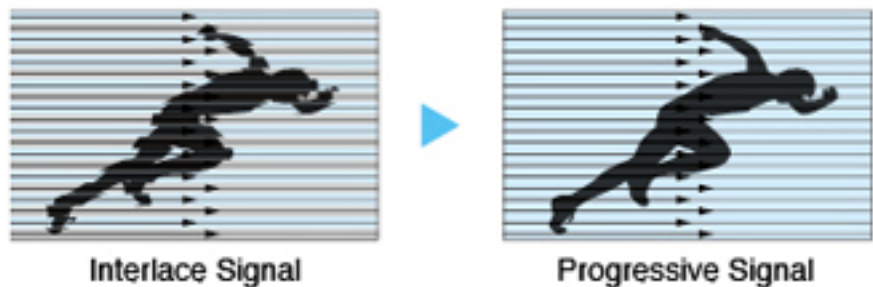
Minimized Reflections with Non-Glare Panel

The monitor is equipped with an IPS non-glare panel for high visibility. It also uses dimming technology to minimize flicker and help prevent eye fatigue for a more comfortable working environment.



I/P Conversion for Flicker-Free Display

The HDMI input of the ColorEdge CG2420 supports I/P (interlace/progressive) conversion for converting the interlace signals from TV and video into progressive signals for flicker-free display.



Light-Shielding Hood

The CG Series comes bundled with a shading hood that effectively prevents glare on the monitor's screen caused by ambient lighting. The ColorEdge CG2420's shading hood is newly designed and attaches to the monitor magnetically. This allows the users to attach the hood quickly and easily without needing to connect separate parts.



Ergonomic Stand for Comfort and Convenience

Adjust the screen to the most comfortable angle and reposition it to show your work to a colleague or client. The monitor comes with a versatile stand that offers height, tilt, and swivel adjustments as well as portrait display.



Multiple Inputs

DisplayPort, HDMI, and DVI-D inputs are included and support various types of graphics boards. The HDMI input also offers direct connection with digital cameras. Two USB upstream ports allow two computers to be connected at once so it is not necessary to reconnect the USB cable when using the ColorNavigator software and switching between computers.

