

## EU Instructions

**BoQube**, with its innovative „Two-in-One“ system, can be used as both a propagator and a plant box.

**Components:** Tray, insert, design ring and cover. Also included: 1 x Pikette, Colour: anthracite and 1 x ceramic tube, Colour: light brown.

**Recommendation:** Use Romberg coir pellets, 36 mm Ø and 5 litres of POP UP soil from the STYLE category as substrate in the insert and the tray. The substrate is not included in the scope of delivery!

### Step by step to successful growing.

1. Insert the ceramic tube and place 10 coir pellets into the cavities provided in the insert.
2. For 10 coir pellets, pour 360 ml +/- 20 ml of lukewarm water into the watering channel. Small variations in the optimum quantity of water are normal since the coir pellets are a natural product. A scale in the insert indicates the water level. The water is automatically distributed along the channels. It takes five minutes for the coir pellets to swell into small planting balls. Excess water will be slowly discharged by the ceramic tube into the tray below and can be poured off later. To do this, carefully remove the insert.
3. The coir pellets already have a preformed depression for seeds or cuttings. For sowing, see the instructions on the respective seed packet. The Pikette can be used to mark the seeds. It can be written on with a fine, waterproof marking pen and also has small hooks for attaching plant labels. The insert has holes directly next to the coir pellets into which the Pikette can be inserted. The BoQube should ideally be placed in a well lit and warm position in the house but not in direct sunlight. The watering hole in the cover permits the addition of water without removing the cover – clean and drip-free. Important: Ventilate and water regularly but avoid standing water! For a good exchange of air, lift off the cover for a short while every day. Natural air circulation and side ventilation openings keep the air fresh, even when the cover is on.
4. As soon as the roots have grown through the fine fleece of the planting balls, the seedlings can be planted out. Don't forget to water the young plants again before moving. Important: Do not try to remove the substrate and fleece from the roots. After a while they will biodegrade. The insert and tray are connected by a practical attachment principle and are easily separated. To convert BoQube into a plant box, first remove the insert and the whitish stopper in the bottom of the tray. To avoid standing water, place a drainage layer 1-2 cm thick of, for example, expanded clay in the bottom of the tray. On top of this drainage layer, spread about 5 litres of substrate. The Romberg POP UP soil is ideally suited.
5. The tray provides sufficient space for up to 4 seedlings. When planting out, be sure to leave sufficient space between the seedlings. For optimum growing conditions, replace the cover when needed. Depending on their sensitivity to cold and the weather, the remaining seedlings can be planted out in larger pots, a balcony box or directly into a bed in the garden.
6. BoQube is UV-resistant and suitable for both indoor and outdoor use. The material is also PAH-free and food-safe. Best preconditions for successful growing results!

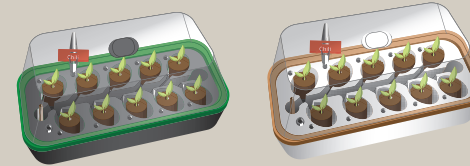
Many more useful products for plant raising, growing, care and protection can be found at [www.romberg.de](http://www.romberg.de)

# BoQUBE

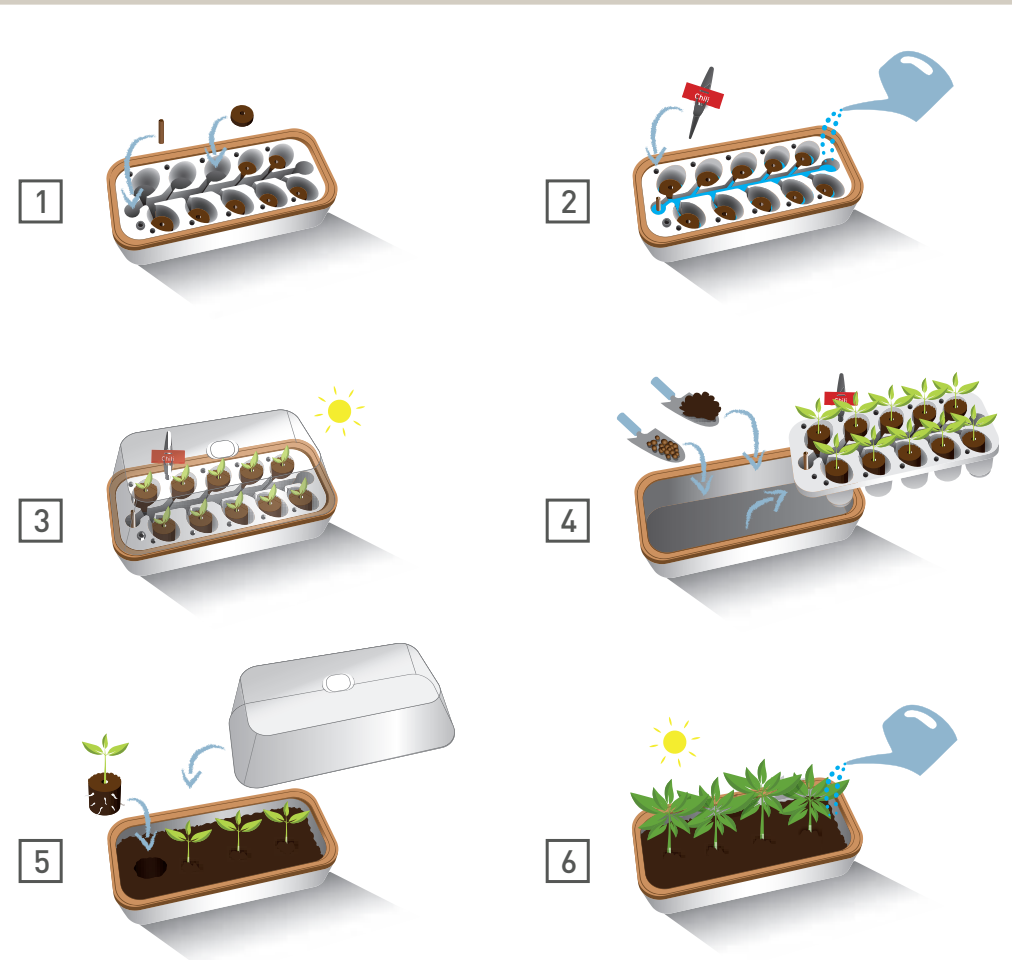
D Gewächshaus & Pflanzkasten System

FR Système mini-serre & jardinière

GB Propagator & plant box system



# romberg



A16294199