

### Limited Lifetime Warranty

Valterra Products, LLC warrants our faucets against defects in material or workmanship for the life of your faucet, ordinary wear and tear excluded. Should any faucet, part or parts thereof prove defective, contact Valterra Products, LLC at 800-806-6159 for repair assistance or return authorization. Repair or replacement will be made without charge. Liability for consequential damages under any and all warranties are excluded to the extent such exclusion is permitted by law. Some states do not allow exclusion or limitation and exclusion may not apply to you. This warranty gives you specific legal rights, and you may also have other rights which vary from state to state.

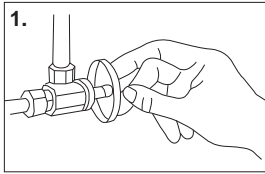


*Making Water Work Beautifully*



**Pull Out Kitchen Faucets**

Valterra Products, LLC  
Mission Hills, CA 91346  
1.800.806.6159  
[www.valterra.com](http://www.valterra.com)

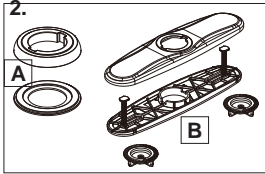


1.

## INSTALLATION:

### 1. SHUT OFF SUPPLY

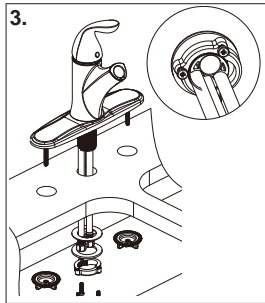
Shut off hot and cold water supply lines. Clear Sink ledge of all debris. **NOTE:** This faucet must be winterized annually to prevent the water lines and pullout spout from freezing, otherwise damage may occur to internal components.



2.

### 2. PREPARE FOR INSTALLATION

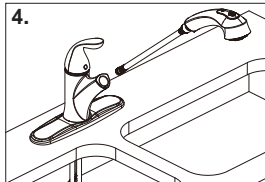
Slide 1 hole (A) or 3 hole (B) mount flange onto threaded underbody. For 3 hole installation, Drop screws through bottom plate and slide bottom plate into place. Plumber's putty is not required.



3.

### 3. INSTALL FAUCET

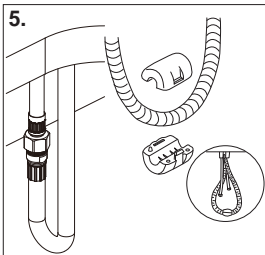
Install the faucet onto your sink by placing the flexible water supply lines and pull out hose through the center hole. Position faucet on sink making sure the body and handle are centered. From under the sink, thread the plastic nuts onto screws (3 hole mount only). Hand tighten until snug. Slide rubber washer then brass washer onto threaded underbody. Thread mounting nut onto underbody. Hand tighten. Tighten screws on mounting nut using a screw driver



4.

### 4. POSITION SPOUT

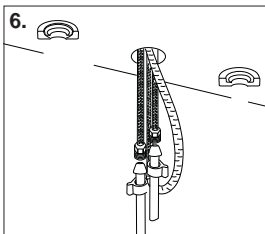
Insert pull-out spout into faucet body after mounting faucet onto sink. Drop the threaded end of the spray hose down through the holder and the center faucet mounting hole.



5.

### 5. ATTACH HOSE AND WEIGHTS

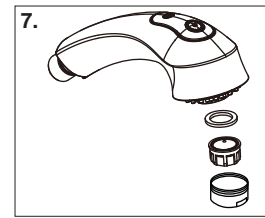
Connect the pull out hose to the center of the faucet body. Tighten with a wrench. Do not overtighten. Assemble the lead weights to hose, just above the floor line, so the hose automatically retracts.



6.

### 6. CONNECT SUPPLY LINES

Connect existing water supply lines to the faucet supply lines.



7.

### 7. FLUSH LINES

Turn on water supply and check for leaks. Flush faucet thoroughly to remove any particles in the water lines or faucet. To do this, remove aerator and run hot and cold water through faucet. Replace and tighten aerator.

## Operating Instructions - Faucet

Pulling up on the lever handle causes water to flow out the aerator. Pulling up and to the left dispenses hot water; pulling up and to the right dispenses cold water. Handle positions between full hot and full cold produce varying degrees of warm water. The degree of handle opening determines the volume of water flow. Returning the handle to the center and down position stops the water flow.

The aerated white stream is the default flow. To use the vegetable spray pattern, press the button at the top forward position on the spout. To return to the aerated flow, push the button at the top rear position.

## Operating Instructions - Pullout

The spout can be rotated from full left to full right on the sink. To use the spout as a hand held sprayer, pull the spout out of the receptor to move it freely above the bowls being careful not to splash water. Return the spout to the receptor when finished.

## Cleaning Tips

The finish on your Phoenix faucet is designed to retain its beautiful sheen for years. To maintain the original look of the finish, care and caution should be used. We recommend the use of mild soap and water to clean the faucet. **THE USE OF ABRASIVE CLEANERS MAY SCRATCH THE FINISH.**

## Low Flow

After extended use, the water flow from your faucet may appear to lessen. This may be caused by a clogged aerator or check valve. Cleaning these areas often fixes a low flow. Your faucet is equipped with 2 check valves. They are installed to prevent back flow of contaminated water into the water supply lines.

## Cleaning the Check Valves

The check valves are located in the end of the spray head and the end of the pull out hose under the sink. To clean the lower check valve, use two adjustable wrenches to remove the flexible hose where it connects under the sink. Remove any debris using a small blade screw driver.

The upper check valve is located inside the end of the wand assembly. Unscrew the wand from the hose and check inside the end. Remove any debris with a small blade screw driver.

## Cleaning the Aerator

Remove the aerator with an adjustable wrench being careful not to scratch the finish. Remove the plastic parts inside the aerator. Rinse to remove any debris. Reassemble and replace it in the spray head.

## Helpful Hints

Be especially careful when screwing threaded connections together. Do not tighten any connection if the parts are not threading evenly. Unscrew the parts and start over. Unscrew the nut until a click is heard. Then screw the nut on clockwise.

## Cautions:

All supply connections should be hand tightened with an additional 1/4 turn by wrench.

No sealant of any kind should be used between the tailpiece nut and the faucet shank.

This faucet must be winterized annually to prevent the water lines and pullout spout from freezing, otherwise damage may occur to internal components.