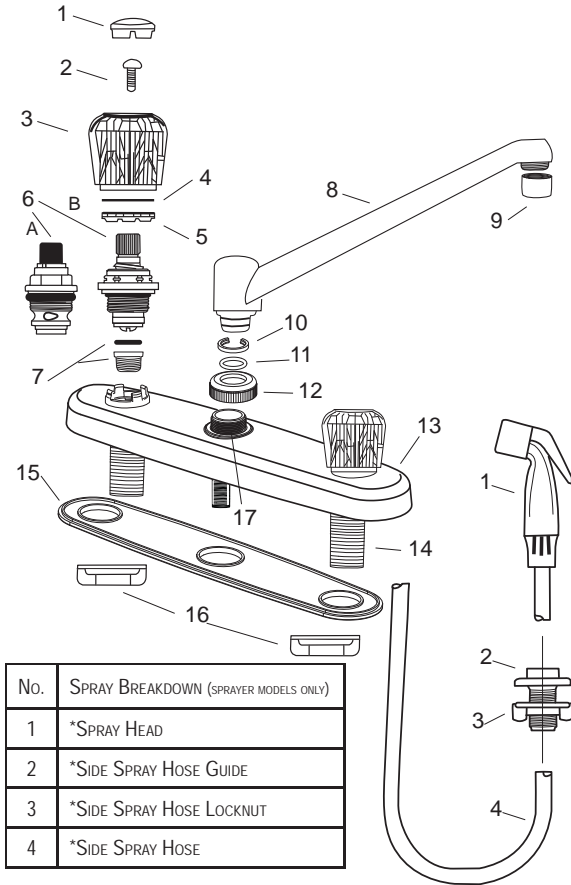


Limited Lifetime Warranty

Valterra Products, LLC warrants our faucets against defects in material or workmanship for the life of your faucet, ordinary wear and tear excluded. Should any faucet, part or parts thereof prove defective, contact Valterra Products, LLC at 800-806-6159 for repair assistance or return authorization. Repair or replacement will be made without charge. Liability for consequential damages under any and all warranties are excluded to the extent such exclusion is permitted by law. Some states do not allow exclusion or limitation and exclusion may not apply to you. This warranty gives you specific legal rights, and you may also have other rights with vary from state to state.



| No. | DESCRIPTION |
|-----|-----------------------------------|
| 1 | *HANDLE BUTTON |
| 2 | HANDLE SCREW |
| 3 | HANDLE (SEVERAL STYLES AVAILABLE) |
| 4 | LOCK WASHER |
| 5 | BONNET OR CARTRIDGE LOCK |
| 6 | A) CARTRIDGE B) STEM & BONNET |
| 7 | *SEAT & WASHER |
| 8 | SPOUT (SEVERAL STYLES AVAILABLE) |
| 9 | AERATOR |
| 10 | SPLIT SNAP RING |
| 11 | SPOUT O-RING |
| 12 | SPOUT NUT |
| 13 | SHIELD |
| 14 | SHANK |
| 15 | BOTTOM PLATE |
| 16 | LOCKNUT |
| 17 | UNDERBODY |

| No. | SPRAY BREAKDOWN (SPRAYER MODELS ONLY) |
|-----|---------------------------------------|
| 1 | *SPRAY HEAD |
| 2 | *SIDE SPRAY HOSE GUIDE |
| 3 | *SIDE SPRAY HOSE LOCKNUT |
| 4 | *SIDE SPRAY HOSE |

NOTE: Actual parts for your faucet may not look like those shown. This illustration is for the purpose of identifying the name and placement of parts.

*Asterisked parts are not standard on all models.

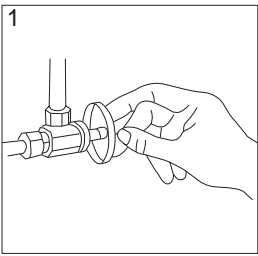
Valterra Products, LLC
Mission Hills, CA 91346
1.800.806.6159
www.valterra.com



Making Water Work Beautifully



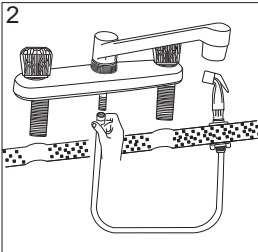
**All 2 Handle Kitchen Faucets
8", 4" Centers**



1. SHUT OFF SUPPLY

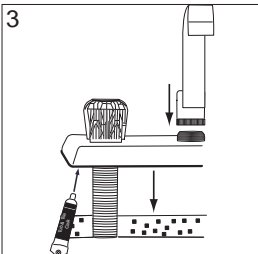
Shut off hot and cold water supply lines. Clear sink ledge of all debris.

IF YOUR FAUCET DOES NOT INCLUDE A SIDE SPRAY, PROCEED TO STEP 3.



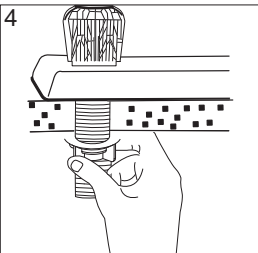
2. ATTACH SPRAY

Insert hose guide and secure with locknut. Insert spray hose down through hose guide. Connect spray hose to nipple under the faucet body. **Do NOT OVERTIGHTEN.**



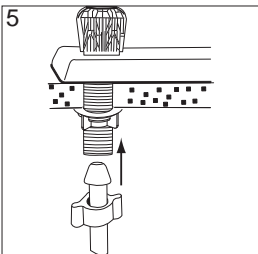
3. ASSEMBLE/POSITION FAUCET

Attach spout to base. Spread a small amount of tub and tile caulk on the surface of the bottom plate facing the counter or sink. Position faucet through bottom plate, down through holes of counter top or sink.



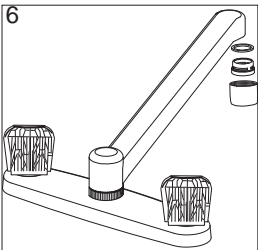
4. TIGHTEN NUTS

Align faucet from underside of mounting surface and secure by hand tightening locknuts. **THE BOTTOM PLATE MUST BE USED.**



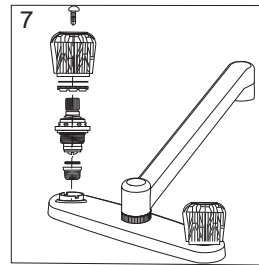
5. CONNECT WATER SUPPLY

Connect water supply: Hot water to the left and cold water to the right. Make sure that the end of your existing supply line is straight and will fit snugly into the threaded shank. Screw the tailpiece nut onto the faucet shank. Hand tighten.



6. FLUSH LINES

Remove aerator. Turn on water supply to faucet. Flush lines by running both cold and hot water through faucet in full open position for 15-20 seconds. Replace aerator (do not cross thread). Check supply lines for leaks. If aerator ever becomes clogged, repeat flushing.



7. CARTRIDGE REPAIR/ REPLACE

If the faucet develops a leak, it may be the result of debris in the water line which is preventing a good seal. Turn the faucet full on and off several times to flush out any material that may be lodged in the faucet. If the problem persists, follow these steps:

- » Turn off the water supply.
- » Open the faucet to relieve any line pressure.
- » Unsnap the Hot or Cold index button on the handle.
- » Remove the handle screw using a phillips screwdriver. Lift the handle off.
- » **NOTE PROPER INSTALLATION OF PARTS AS YOU REMOVE THEM.**

- » With a blade screwdriver, gently remove the lock washer and bonnet or cartridge lock.
- » Unscrew the stem or cartridge assembly counter clockwise with a 3/4" 6 point (or 12 point) deep socket.
- » Remove any debris from the faucet body and stem or cartridge by flushing with water or brushing it out with a small brush.
- » **IMPORTANT:** Use an absorbent towel to remove all water left inside the faucet body. If there is damage to the part, seals, or washers, replace with a genuine Phoenix replacement cartridge.
- » Replace all components in reverse order.

CAUTION: The stem or cartridge can be easily cross threaded or overtightened. When reinstalling the part make sure the threads are properly aligned and **HAND TIGHTEN** until its snug then add a 1/2 turn more. Tighten **ONLY 1/4 TURN AT A TIME** to seal any leaks. When replacing the lock washer it must be underneath all four tabs on the shield.

- » Turn water on and check for leaks.
- » Replace handle, screw and button.

For additional information call us at 1.800.222.6041 Toll free or visit us online at phoenixfaucets.com

OPERATING INSTRUCTIONS

KNOB HANDLE MODELS

Rotating the knob handle counter clockwise causes water to flow out the aerator. The degree of knob opening determines the volume of water flow. Returning the knob handles to their original position stops the flow of water.

LEVER HANDLE MODELS

Rotating the hot side lever handle counter clockwise or the cold side lever handle clockwise causes water to flow out the aerator. Returning the lever handles to their original position stops the flow of water.

SIDE SPRAY MODELS

To spray down the bowls or wash vegetables, pull spray head from holder and depress the lever to divert water from the spout to the spray head. Release the lever to return water to the spout. Return spray head to holder.

CAUTIONS:

All plastic connections should be hand tightened. **DO NOT USE TOOLS.** No sealant of any kind should be used between the tailpiece nut and the faucet shank.

HELPFUL HINTS

Be especially careful when screwing threaded connections together. Do not tighten any connection if the parts are not threading evenly. Unscrew the parts and start over.

CLEANING TIPS

The finish on your Phoenix faucet is designed to retain its beautiful sheen for years. To maintain the original look of the finish, we recommend the use of mild soap and water to clean the faucet. **THE USE OF ABRASIVE CLEANERS MAY SCRATCH THE FINISH.**