

2013 New Products

ParkPower
by Maringo

RV EEL ShorePower™

Precision Spotlight

Pro Installer Series

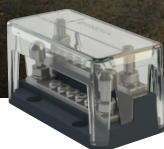
Push Button Switches

CZone™ AC Interfaces

Digital Voltage Sensing Relay

Alpha Pro Regulator

Ultimate Series Lithium Ion Battery



Actuant
ELECTRICAL

Harness the Power of Park Power



Wherever the road takes you, there are many elements to ensure a safe and enjoyable RV experience. While onboard, RV'ers demand the comforts of home so that family or companions may enjoy themselves, share cold beverages, hot food, watch TV, sit outside "catching rays" or relax in an air conditioned environment while reading a book. Just as when at home, you rarely consider how the supply of electricity you need to enjoy your favorite activities reaches your home or RV. There is a simple reason for that: You place your trust and confidence in the electrical system to function properly and consistently so that you can focus on enjoying your daily life.

This trust is why you buy from Marincos and Mastervolt. We power your onboard RV adventures, so that you have the confidence to go and do as you please. The expression 'The power to be independent' has never been more meaningful with the unmatched range of electrical products and system solutions that Marincos and Mastervolt offer.

We are committed to providing electrical components and power systems that deliver a high level of quality and innovation, and are designed to consistently perform in harsh environments. The new products we are bringing to market continue to push technology, and deliver the market-leading, feature-rich functionality and quality that you expect from Marincos and Mastervolt. We are excited to introduce these new components and solutions, as they are designed and tested by a team of passionate industry experts who have decades of experience and know-how.

So whether you are looking for an electrical component or full power electronic integrated system, we provide what you need. Wherever your adventure takes you, go confidently harnessing the power of Marincos and Mastervolt, the leading supplier of recreational vehicles worldwide.

Our Marincos and Mastervolt RV team wishes you a successful season.

A handwritten signature in black ink that reads "G.R. Schrotenboer". The signature is fluid and cursive.

G.R. Schrotenboer,
Marine & Mobile Business Leader

new product:

RV EEL Cordsets & Adapters



The RV EEL (Easily Engaged Lock) Detachable Cordset has a patented, industry first, jaw-clamp design providing one-handed operation and a secure waterproof seal which completely eliminates the need for a locking ring. The RV EEL connection is built for the harshest environments and is UL approved. Best of all, it works with your current inlet. On the plug end of the cord, Park Power has added a large grip handle, that provides a safe connection and is movable so the electrical box can be closed. In addition to cordsets with the RV EEL System, Park Power also has a full set of pigtail adapters all using the new RV EEL technology.

RV Connection End

- EEL Jaw clamp technology—Eliminates locking ring
- LED power indicator
- Secondary lock for added security
- Cord light
- Water-tight seal

Power Connection End

- Large Grip Swivel handle allows box cover to close
- Keeps hand away from dangerous high voltage contacts
- Easier to insert and remove electrical plug



Handle Swivels



5 YEAR WARRANTY



30 Amp 125V Cordsets

25' Cordset, yellow

CS30-25RV

50 Amp 125/250V Cordsets

25' Cordset, yellow

CS504-25RV

Pigtail Adapters

15A Male to 30A Female

P15-30RV

15A Male to 500A 125/250V Female

P15-504RV

30A RV Plug to 50A 125/250V Locking Connector, 25'

P30-504RV-25

new product:

50 Amp Right Angle Cordset & 30 & 50 Amp Replacement Ends

50 Amp 125/250V Right Angle RV Cordset

New from ParkPower by Marinco, the Right Angle Cordset is designed specifically for RV applications. It is an ideal way to connect in tight spaces. With a host of features, the Right Angle Cordset is built to last in harsh environments. It is easy to install with its GripLock™ handle design that makes hooking-up and aligning with the RV inlet a breeze, even in the darkness.

Features & Benefits:

- Right angle detachable connection provides minimal cordset protrusion from inlets for more clearance in tight RV spaces
- GripLock™ handle design for easy hook-up and correct blade alignment, even in the dark
- Includes a threaded ring and Easy Lock™ ring
- Heavy-duty construction
- Water-tight molded ends
- 30 feet of super flexible 6/3-8/1 cable



30RPC50RV

30 & 50 Amp Male & Female Replacement Ends

Park Power by Marinco now offers replacement ends for your RV power cord. Available in both male and female, 30 amp and 50 amp Models, the ends are constructed for durability in harsh environments. Easy to use and install, the replacement ends are designed for RV applications.

Features & Benefits:

- Male & Female ends for 30 amp and 50 amp applications available
- Constructed with glass filled Nylon ends for durability
- Wide grip handle
- 30 amp ends for use with 10 gauge RV cable
- 50 amp ends for use with 6 gauge RV cable



Amp	Description	Item #
30A	Male Plug	30MPRV
	Female Connector	30FCRV
50A	Male Plug	50MPRV
	Female Connector	50FCRV

new product:

Digital Voltage Sensing Relay & Push Button Switches

Digital Voltage Sensing Relay DVSR 140

The DVSR 140 allows charging of two independent battery banks from a single charging source by utilizing a dual sensing functionality, which in turn allows two-way charging. When the voltage on the first battery rises to the “charged” level, the DVSR engages, charging the second battery. When charging is complete on both batteries, the DVSR disengages, isolating the two batteries from each other. As an option, remote sensing circuitry provides isolated control from the secondary supply, giving extra protection from voltage spikes when connected to an ignition switch.

Features & Benefits:

- Accurate voltage measurement through digital circuitry
- Multi-voltage, auto selects between 12V and 24V DC operation
- Cut in voltage of 13.4V (26.8V for 24V) to suit low output alternators, and high temperature environments
- Remote status LED output shows DVSR status at remote location
- Very low stand-by current draw during normal operation, when unit is powered but disengaged
- Zero stand-by current draw when remote sensing circuit utilized
- Horizontal, square and vertical clusters available



12 & 24V Push-button Switches & Buzzers with LED Ring

New push-button Switches & Buzzers are built to last with their stainless steel components and silver alloy contacts. The through panel mount switches are ideal for lighting, switch, or dash panels, with colored rings that can be wired to either display power to the system or switch back lighting. The product line includes both switches and warning buzzers with LED light rings.

Features & Benefits:

- Maximum switch current rating 5 Amps
- IP67 environmental protection switches
- IP50 environmental protection buzzers
- 80 decibel buzzer sound intensity



80-911-0061-00



80-911-0062-00

Volts	Description	Color	Item #
12V	Latching On/Off	Red LED	80-511-0001-01
	Latching On/Off	Blue LED	80-511-0003-01
	Momentary (On)/Off	Red LED	80-511-0002-01
	Momentary (On)/Off	Blue LED	80-511-0004-01
	Buzzer	—	80-511-0009-01

Volts	Description	Color	Item #
24V	Latching On/Off	Red LED	80-511-0005-01
	Latching On/Off	Blue LED	80-511-0007-01
	Momentary (On)/Off	Red LED	80-511-0006-01
	Momentary (On)/Off	Blue LED	80-511-0008-01
	Buzzer	—	80-511-0010-01

new product:

Pro Installer Series



Pro Installer Series

Onboard power demands continue to increase as RV'ers request the comforts of home on their recreational vehicles. Marincio and BEP looked at the common products used by electrical installers everyday and made significant improvements in design and construction to make them more robust and extend product life, provide flexibility to the builder or installer and save valuable space.

Pro Installer modular assemblies are designed for fast, flexible installation in tight spaces, making it easy to "cluster" products and reducing their footprints. The common interconnection height enables solid link bars to connect multiple Pro Installer products, a smart design feature for RV's. Like all Marincio products by BEP, you can be assured of durable construction engineered specifically to handle challenging harsh environments with high-temperature, fiber-reinforced base material for strength and temperature resistance.

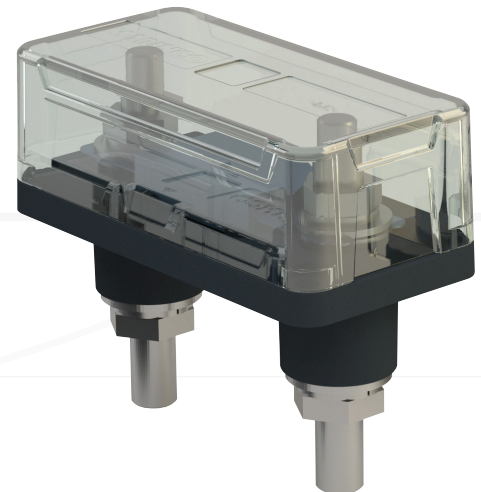
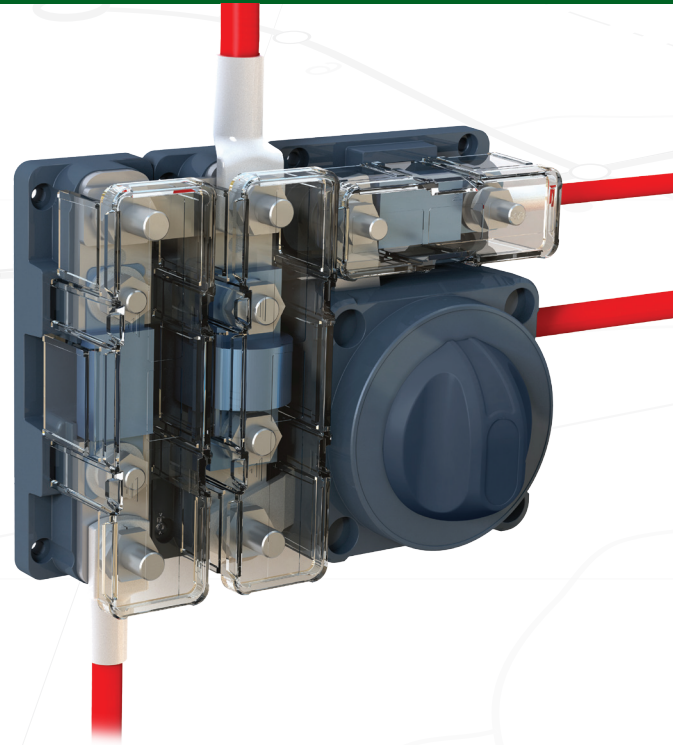
All Pro Installer products include the following features: there is a common interconnection height, label recess on the cover, ability to "cluster," compact footprint, and stainless steel studs with plated brass nuts.

Pro Installer Heavy-duty Buss Bars

Available in a broad range from 8-stud 650 Amps to 4-stud 500 Amps, Pro Installer buss bars are designed for flexibility and scalability. The snap-out side skirts allow for additional cable entry, and radius ends improve cable routing options. It's easy to link other Pro Installer products to the buss bars because of the common interconnection height in the product line.

Features & Benefits:

- Compact footprint saves space
- Clear, polycarbonate covers insulate and protect on three sides
- Secure cover attachment does not interfere with cabling
- Snap-out skirts for flexible cable entry
- Radiused ends improve cable routing
- Long, threaded studs to connect up to (4) large cable lugs
- Plated brass nuts and stainless steel studs prevent thread galling during tightening



new product:

Pro Installer Series

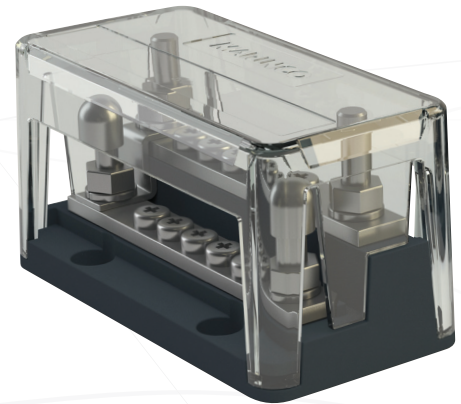


Pro Installer “Z” Buss Bar Range

This patent-pending, space saving buss bar range is a completely new concept for cable termination. Offering almost unlimited installation flexibility, the high and low level bars can be bussed together with Z-Link or used as separate positive/negative bars. Pro Installer Z-Bars are available in (10) way and (18) way 200 Amp Z-Bar models for a variety of onboard applications.

Features & Benefits:

- Easily extend Z-Bars by placing on end or back-to-back
- Clean installation—all cables can be run from one side of the Z-bar
- Innovative clear covers insulate and protect on three sides and offer easy access

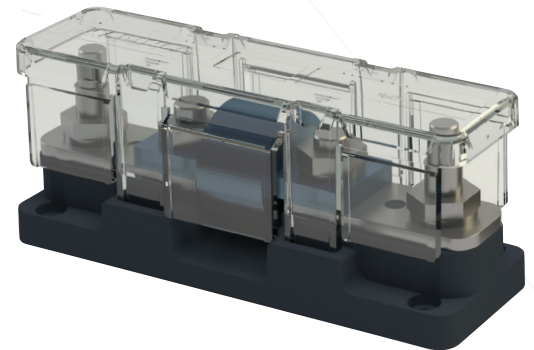


Pro Installer Class-T and ANL Fuse Holders

Providing high-capacity fusing, fast response and very high interrupt ratings (ANL up to 6,000 Amps, Class-T up to 20,000 Amps), these fuse holders are ideal for protecting today's demanding onboard power electronics technology including inverters and battery chargers. They also protect wiring from short circuits. Pro Installer fuse holders' durable construction allow fuses to run at maximum load.

Features & Benefits:

- Radiused ends improve cable routing options
- Class-T: 225–400 Amp, 450–600 Amp models available
- ANL: 300 Amp and 750 Amp surface mount options, innovative new 750 Amp through-bulkhead mount holder (Patent pending)
- ANL: for use with 5/16" (8mm) or 3/8" (10mm) ANL fuses

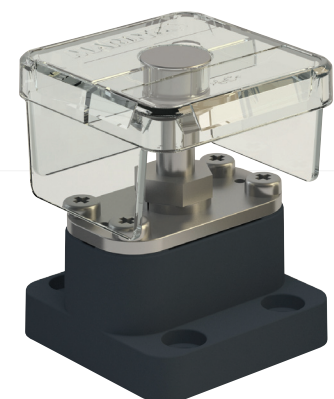


Pro Installer Insulated Studs

The Pro Installer insulated studs are a smart choice for installers. An increased stainless steel stud length allows up to three cable lugs to be connected, saving space, while the snap-out side skirts allow for additional cable entry.

Features & Benefits:

- Saves space and adds design flexibility
- Insert molded cable lugs and fiber-reinforced base provide strength and durability
- Power tapping plate converts from a single stud to add up to four connection points for smaller cables while leaving access for larger cables
- Innovative, clear covers insulate and protect on three sides and offer easy access



new product:

Pro Installer Series

Description	Approx Dimensions LxWxH	Terminal Qty	Terminal Size	Connecting Stud Qty	Connecting Stud Size	Amps	Conductor Material	Item #
Buss Bars								
650A 8 Stud Buss bar	9.8"x1.9"x2.6"			8	3/8"x1" (10x25 mm)	650A	Tin Plated Copper	777-BB8S-650
650A 5 Stud Buss bar	5.8"x1.9"x2.6"			5	3/8"x1" (10x25 mm)	650A	Tin Plated Copper	777-BB5S-650
650A 3 Stud Buss bar	3.9"x1.9"x2.5"			3	3/8"x7/8" (10x22 mm)	650A	Tin Plated Copper	777-BB3S-650
500A 4 Stud Buss bar	3.9"x1.9"x2.5"			4	5/16"x7/8" (8x22 mm)	500A	Tin Plated Copper	777-BB4S-500
Z-Bars								
200A Z Bar 16 Way Buss Bar + Cover	5.8"x1.9"x2.0"	18	5/32" (4 mm)	4	1/4"x3/4" (6x19 mm)	200A	Tin Plated Copper	777-BBZ18W-200
200A Z Bar 10 Way Buss Bar + Cover	3.9"x1.9"x2.0"	10	5/32" (4 mm)	4	1/4"x3/4" (6x19 mm)	200A	Tin Plated Copper	777-BBZ10W-200
Insulated Studs								
Single Stud	1.9"x1.9"x2.5"			1	5/16"x7/8" (8x22 mm)	n/a		IST-8MM-1S
Single Stud with Power Tap Plate	1.9"x1.9"x2.5"	4	5/32" (4 mm)	1	5/16"x7/8" (8x22 mm)	n/a		IST-8MM-1SPT
8 mm Double Insulated Stud	1.9"x1.9"x2.5"			2	5/16"x7/8" (8x22 mm)	n/a		IST-8MM-2S
Fuse Holders								
			Fuse		Fuse Studs			
ANL Fuse holder	3.9"x1.9"x2.1"		Bussmann 5/16" (8mm), Prudenx or Siba 10mm	5/16" (8mm)	2 Studs Shared with Fuse	5/16"x7/8" (8x22 mm)	300A	
ANL Through Panel Fuse Holder	3.9"x1.9"x1.4" (Fascia side)		Bussmann 5/16" (8mm), Prudenx or Siba 10mm	5/16" (8mm)	+2 For Cables	3/8"x1" (10x25 mm)	750A	Tin Plated Copper
ANL Fuse Holder with 2 Additional Studs	5.8"x1.9"x2.4"		Bussmann 5/16" (8mm), Prudenx or Siba 10mm	5/16" (8mm)	+2 For Cables	3/8"x1-1/8" (10x29 mm)	750A	Tin Plated Copper
Class T Fuse Holder with 2 Additional Studs, 225-400A	5.8"x1.9"x 2.4"		Class T 225A-400A	3/8" (10 mm)	+2 For Cables	3/8"x1-1/8" (10x29 mm)	225-400A	Tin Plated Copper
Class T Fuse Holder with 2 Additional Studs, 450-600A	5.8"x1.9"x2.4"		Class T 450A-600A	0.47" (12 mm)	+2 For Cables	3/8"x1-1/8" (10x29 mm)	400-600A	Tin Plated Copper

*Covers included. 777ANLTP cover is dust/splash-proof.

new product:

Lithium Ion Battery & Alpha Pro Regulator

Lithium Ion Ultimate Series Batteries

The Ultimate Series are all new, multifunctional, lithium ion batteries with a high energy density. They are 70% lighter in weight and mass than traditional lead acid batteries with three times as many charging cycles (2,000 full cycles). These “smart batteries” have an internal Battery Management System (BMS) located within the battery itself that automatically compensates for imbalance between the cells which guarantees constant high capacity and a longer lifespan.

Features & Benefits:

- Advanced technology utilizing lithium iron phosphate (LiFePo)
- 70% savings in space and weight
- Ultra-fast charging and discharging C1 battery
- Connection port to MasterBus CanBus network
- Charged with 3-stage battery chargers including Mastervolt's ChargeMaster and Mass Series
- Can be installed in various orientations
- Common rail system connects two batteries and their BMS functionality for 48 Volt system applications



100933



Alpha Pro Regulator

Mastervolt's newly improved Alpha Pro Regulator maximizes the output of Mastervolt's alternators or other alternators (must have a standard Bosch connector, cable standard in box) through accurate regulation to provide the optimal charge to the batteries. Its proven three-stage plus charging regime, also utilized in all Mastervolt battery chargers, guarantees the most efficient way to top the batteries off. Designed as a “fit all” solution for 12 Volt or 24 Volt applications, it can be set to the right voltage with a simple selector switch.

Features & Benefits:

- Easy operation LEDs on the enclosure indicate charge phase
- Fully connectable to the Mastervolt MasterBus™ system, allowing easy monitoring via a single wire to the MasterView™ Easy touch screen
- As part of the MasterBus™ system, the voltage drop over the battery cable will be compensated automatically as will battery temperature, improving charge time
- The Alpha Pro helps to cut emissions, requiring less run time because it maximizes power from the alternator; a battery can be charged quickly even at low RPM



45512000

new product:



AC Interfaces

CZone™ AC Output Interface (ACOI)

Searching for a simplified way to network, monitor and control onboard AC circuits? The CZone AC Output Interface does it all and provides circuit protection for onboard AC devices. It's easy to install, configure and operate the digital control system with pre-wired components for quick connections while still offering a customizable solution to suit unique installation and application needs.

Features & Benefits:

- Circuit protection, monitoring and control of AC circuits
- Eight outputs, up to 50 Amps each
- Status LEDs and manual bypass at the enclosure
- Support of up to two buss feeds (2 groups, one enclosure)
- Support of multiple pole designs (Double, triple, four pole)
- Staggered load start up
- IPX5 Housing
- 110 Volt AC, 240 Volt AC, 110/220 Volt AC, 50Hz or 60Hz models



80-911-0069-00

CZone™ AC Mains Interface (ACMI)

A sophisticated source selector or transfer switch, the ACMI enables the user to specify which AC power source is actively supplying power to the RV (generator, inverter, etc.). It was developed for use with the CZone digital control system, but may also be used as a stand-alone device. The ACMI can be programmed to automatically change the supply source when the current rating is exceeded, and includes a manual bypass and user-friendly display screen that ensures easy current, voltage, frequency, and power monitoring.

Features & Benefits:

- Six monitored, over-current protected main power inputs up to 100 Amps each
- Two outputs allow for two separate load groups with a parallel option for use with a single source
- Reverse polarity and fault alarms, auto disconnects and lockouts
- Physical and software lockouts between source controls
- Supports multiple pole designs (Single, double, triple, etc.)
- Load shedding ability
- 110 Volt AC, 240 Volt AC, 110/220 Volt AC, 50Hz or 60Hz models



80-911-0068-00

new product:

Precision Wireless Spotlight

Precision Spotlight

The new Precision spotlight offers a 370° sweep, instant stop at any point and wireless control. It is boldly styled in black, white or chrome finishes that complement any RV design. Featuring a weatherproof housing that covers all critical moving parts protecting the motor from water, corrosion, shock and vibration, the internal light movement allows for quiet, precise beam motion and easy positioning. More important, its intense, focused beam illuminates target objects 900 feet away for full visibility.

Features & Benefits:

- 370° rotation, 120° tilt (75° up, 45° down)
- Peak beam intensity 210,000 candela
- Peak beam distance 917 feet
- One-touch sweep, S.O.S. code signaling
- UV and corrosion-resistant housing
- 12 Volt or 24 Volt operation, uses 100 Watt, H3 halogen bulbs
- Universal mounting plate
- Includes wireless remote, optional handheld remote available



3 YEAR WARRANTY

white	SPL-12W
black	SPL-12B
chrome	SPL-12C



Replacement Bulbs

12 Volt, H3 Halogen	202319
24 Volt, H3 Halogen	202320



Remote Options	SPLR-2 Included	SPLR-1 (optional)	SPLR-3 (optional)
Remote Specifications	Wireless Bridge Remote	Hand Held Bridge Remote	Wired Bridge Remote
Power	12 or 24 Volt (hard wired)	CR2450 button cell battery	12 or 24 Volt (hard wired)
Current draw (idle / in use)	negligible	negligible	negligible
Wireless range	200 ft (65m)	200 ft (65m)	—
Estimated battery life	—	> 40 hours (continuous use)	—
Dimensions	3.5"Wx2.25"Hx.75"D 88x57x19 mm	2.0"Wx3.78"Hx1"D 51x96x25 mm	3.5"Wx2.25"Hx.75"D 88x57x19 mm
Weight	2.12 oz (60g)	2.82 oz (80g)	2.12 oz (60g)
Housing material	UV resistant PC/ASA	UV resistant PC/ASA	UV resistant PC/ASA
Button material	Silicone (glow in the dark)	Silicone (glow in the dark)	Silicone (glow in the dark)
Operating temp range	5°F–113°F (-15°C–45°C)	5°F–113°F (-15°C–45°C)	5°F–113°F (-15°C–45°C)
IP Rating	IP54	IP56	IP54

ParkPower[®]
by Marinco[®]

N85 W12545 Westbrook Crossing
Menomonee Falls, WI 53051
800.307.6702
800.799.3779 fax
park-power.com

Mastervolt International BV
Snijdersbergweg 93
1105 AN AMSTERDAM ZO
The Netherlands
+31(0)20 34 22 100
+31(0)20 69 71 006 fax
mastervolt.us

55 Paul Matthews Road
Albany, Auckland 0632
New Zealand
+64 9 415 7261
+64 9 415 9327 fax
bepmarine.com

Today, Actuant Electrical provides electrical tools, transformers, wiring devices and other power management products for the professional, retail/do-it-yourself (DIY), harsh environment, marine, and diverse OEM end-market channels. Our focus is to create innovative electrical products using consistent, high quality processes. We deliver these products wherever our customers need them, anywhere in the world. Whether we power life-saving medical devices or alternative energy sources or create electrical products for marine on-board applications or industrial environments, the varied experience behind our products translates into quality for our customers. actuant.com/electrical

Actuant
ELECTRICAL

A
Acme Electric

GB
Gardner
Bender

MARINCO

MASTERVOLT

SPERRY
INSTRUMENTS

T TURNER
ELECTRIC