

# GIRARD - The Leader in Tankless Technology

**NEW!**



## New Digital User Control Panel (UCP)

- Water Temperature Settings (adjustable from 95° to 124°)
- Fahrenheit or Centigrade Selection
- Continuous Water Outlet Temperature Reading
- Fan Icon
- Water Flow Icon
- Flame Icon
- Error Codes for Easy Diagnostics



ETL certified and approved for the U.S.A. and Canada.

# Girard's GSWH-2 The # 1 Selling Tankless Waterheater!

## Now with Trim Ring Option

### On-Board Micro-Processor Monitors:

- Inlet Water Flow
- Inlet Water Temperature
- Outlet Water Temperature
- Regulates the burner to maintain the set **HOT** Water Temperature:
  - Now you can add COLD Water to the desired temperature
  - All the **HOT** Water you want when you want it!
- 42,000 BTUs which provides the optimum performance for an RV's plumbing
- No special LP gas lines or special plumbing required
- Quiet Brush-less Motor
- 12V power that operates at less than 3 AMPs
- Freeze Protection – Designed for Winter Use
- Designed Specifically for Recreational Vehicles
- Compact Design – Fits in any tank water heater cut-out opening



### NEW Trim Ring Option

Can now be added to the door to give a "finished" look.

- Applicable for Door Kits: 2GWHHD & 2GWHDB
- Available in Black or White



### Hinged Door Design

Easy Latch closing. No more twist latches!

### Three Door Kits

For easy replacement of any tank water heater. See back side for further information.



GIRARD PRODUCTS. LLC.

[www.greenrvproducts.com](http://www.greenrvproducts.com)

Girard Products LLC., 1361 Calle Avanzado, San Clemente, CA 92673  
Toll Free: 866.559.1221 • Local: 949.259.4024 • Fax: 949.276.5502



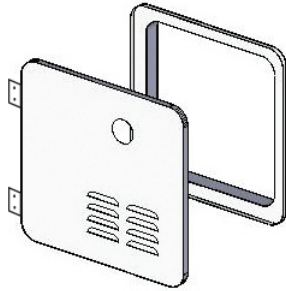
# GIRARD - The Leader in Tankless Technology

## Four door kits for easy replacement of a tank water heater...

### DOOR/FLANGE ASSEMBLY

**Part # 2GWHD**  
**POLAR WHITE**

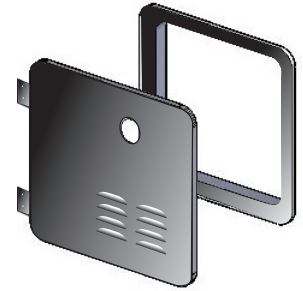
For new installations. Also applicable conversion door for the Suburban 6 gallon water heater.



### DOOR/FLANGE ASSEMBLY

**Part # 2GWHDB**  
**BLACK**

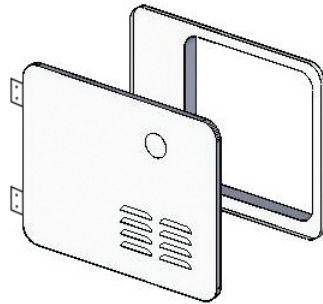
For new installations. Also applicable conversion door for the Suburban 6 gallon water heater.



### DOOR/FLANGE ASSEMBLY

**Part # 2GWHDA6**  
**POLAR WHITE**

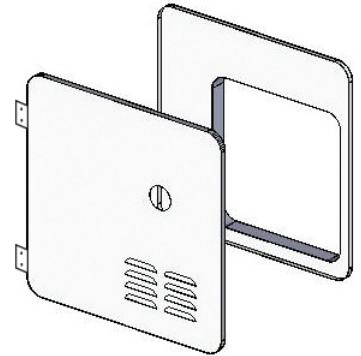
Applicable conversion door for the Atwood 6 gallon water heater.



### DOOR/FLANGE ASSEMBLY

**CONVERSION**  
**Part # 2GWHAS10**  
**POLAR WHITE**

Applicable conversion door for the Atwood or Suburban 10 gallon water heater.



### The table below summarizes the main performance specifications of the Model GSWH-2

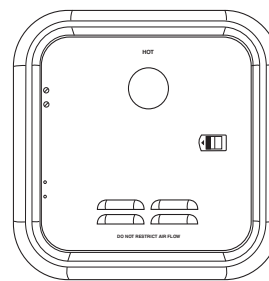
BTU/HR	42,000 BTU
Fuel	Propane (LP Gas)
Inlet Pressure	11" WCI Min to 14" WCI Max
Manifold Pressure	1.5" - 7.2" WCI
Power Input	12VDC < 3 amp
Water Operating Pressure	125 PSI Max
Dimensions	Width: 12.5" • Height: 12.5" • Depth 15.5"
Shipping Weight	24 lbs.

### DOOR TRIM RING

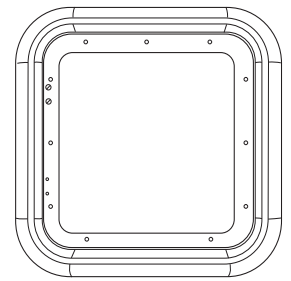
**Part # Description**

**2GWHDTR-B** Trim Ring Black (2GWHDB Door Kit)

**2GWHDTR-W** Trim Ring White (2GWHD Door Kit)



FRONT



BACK



**GIRARD PRODUCTS, LLC.**



ETL certified and approved for the U.S.A. and Canada.

Girard Products LLC., 1361 Calle Avanzado, San Clemente, CA 92673  
Toll Free: 866.559.1221 • Local: 949.259.4024 • Fax: 949.276.5502

[www.greenrvproducts.com](http://www.greenrvproducts.com)