

BRAKEMAN®



- 1 & 2 axle trailers
- Illuminated LED output indicator
- Slide adjustment output control
- Plug & Play feature allows quick and easy connection

Part Number	Description	Packaging
83501	Brakeman Compact Electronic Brake Control	Clam

NOTE: Plug & Play feature allows quick and easy connection. It adapts to all Tekonsha 2-Plug vehicle specific brake control wiring harnesses.
NOTE: Not recommended for use with BMW X5 Sport Utility Vehicles.
 See application guide for vehicle specific applications.



BRAKEMAN® IV



- 1 to 4 axle trailers
- Digital output indicator
- Small, compact design
- Up-front push buttons for sync and output
- Diagnostics for overload, open ground
- Short circuit protected
- Mounts in any direction
- No leveling required
- Mounting hardware included
- Smooth and simple installation
- Plug & Play feature allows quick and easy connection
- Attractive point-of-purchase display packaging

Part Number	Description	Packaging
83504	Brakeman IV Electronic Brake Control	Clam

NOTE: Plug & Play feature allows quick and easy connection. It adapts to all Tekonsha 2-Plug vehicle specific brake control wiring harnesses.
 See application guide for vehicle specific applications.



PILOT®

The Pilot has just made owning and operating a digital brake control easier than ever.

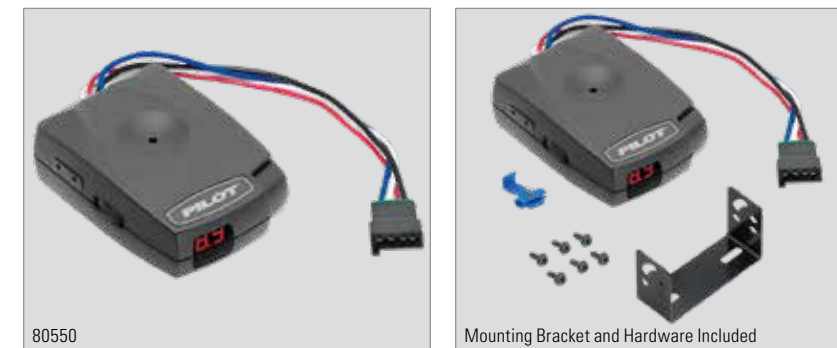


- Because of the flexible mounting options, you are able to mount the Pilot in any direction. Our microprocessor allows you the ability to read the display even when the Pilot is mounted upside down. The Pilot's digital display shows voltage output to the brakes with additional protection against short circuit or loss of ground. Capable of handling up to 3 axle trailers.
 - Large easy to read dual digital display
 - Dark smoke lens ideal for direct light applications; performs better than red lens
 - Microprocessor allows control to be mounted upside down and still have a readable display
 - Protection against short circuit and loss of ground
 - Standard mounting bracket included, optional pivot mount available (P/N 5298)
 - For use on any 12 volt negative ground system
 - Plug & Play feature allows quick and easy connection



Part Number	Description	Packaging
80550	Pilot Electronic Brake Control	Clam

NOTE: Plug & Play feature allows quick and easy connection. It adapts to all Tekonsha 2-Plug vehicle specific brake control wiring harnesses.



POD™

The POD (Power on Demand) is your best choice for 1 or 2 axle trailers, especially when your installation options are limited.



- The POD can be mounted in any direction, and its unique design features "up-front-easy-access" adjustment controls, even when mounted upside down.
 - Power-on LED for a positive tow vehicle-to-trailer connection
 - "Up-front" manual over-ride control
 - Rugged, easy mount chassis
 - Mounting hardware included, smooth and simple installation
 - Solid state electronics
 - Plug & Play feature allows quick and easy connection

Part Number	Description	Packaging
80500	POD Electronic Brake Control	Clam

NOTE: Plug & Play feature allows quick and easy connection. It adapts to all Tekonsha 2-Plug vehicle specific brake control wiring harnesses.

