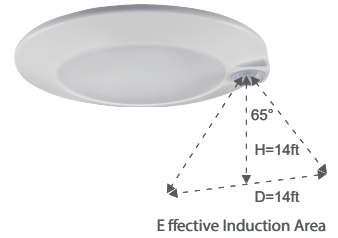
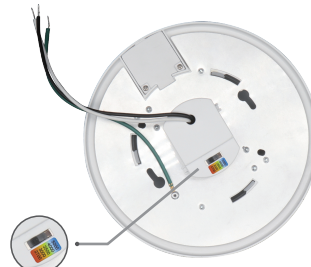
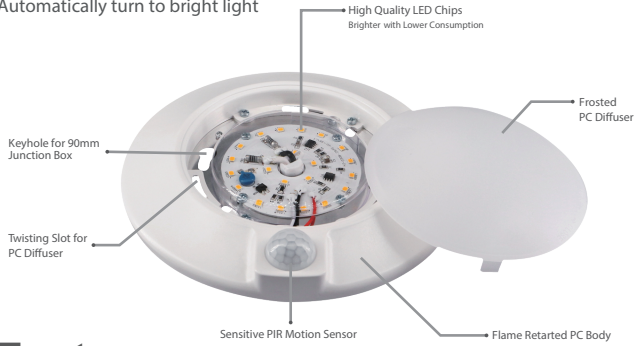


4" LED Closet Lite with PIR Motion Sensor



Automatically turn to bright light



PIR Motion Sensor

Turn on when detecting movement, not only in dark, but also daytime. Turn off after 30 seconds (customized is also available) delay if no more motion.

Features

- When motion is detected, it automatically turning lights ON and turns the lights off after 30 seconds
- Made of durable aluminum body with PC diffuser, minimizing signal interference
- The light features a 10W LED module, making it the energy efficient, popular alternative to incandescent and CFL fixtures
- The light incorporates today's most wanted features and meet NFPA 70, NEC Section 410.16 C (1) requirements
- It is easy to install with keyholes for multiple ceiling box configurations
- Design for indoor use only
- 5-color field selectable CCT - 2700K, 3000K, 3500K, 4000K, 5000K



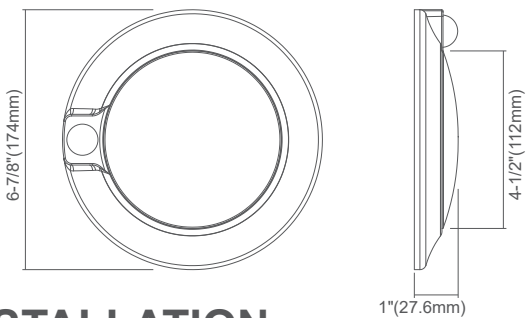
when walk into the reaction range



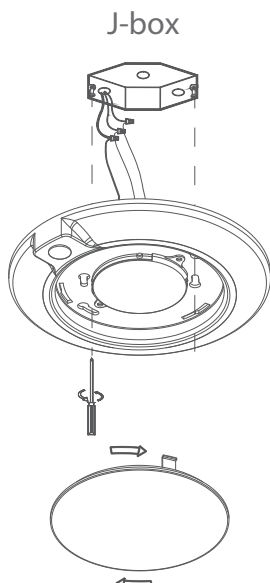
Automatically turn to standby mode when people walk out of the reaction range



DIMENSION



INSTALLATION



ORDERING&SPECIFICATION

Model	FDLED-4-10W-5CCT-PIR-WH
Watts	10W
Lumen	600lm
ColorTemperature	Field selectable (2700K/3000K/3500K/4000K/5000K)
CRI	80Ra
Input	AC120V,60Hz
Dimming	No
PowerFactor	>0.9
ApprovedLocation	Wet Location
Air Tight	Yes
OperatingTemp.	(-4 ° F~104 ° F)-20~40 ° C
BeamAngel	120°

PACKAGE

Weight.(g)	170g
Qty/CTN (pcs)	20pcs/CTN
Box Dimension	400*385*215mm
Gross Weight	4.4kg/CTN

INCLUDED IN BOX

- Three Wire Nuts
- Two Screws

