

# 2'x2' Premium Panel

20W, 30W, 40W Selectable | Colour Selectable | 120-347V

High performance, light-weight luminaires suitable for lay-in, surface or pendant mounting  
Ideal for use in schools, health care applications, offices, retail spaces, and more

0-10V Dimming Lead on Both Sides of Driver Junction Box

Use Switches to Select Colour Temperature and Wattage



Non-yellowing Prismatic Lens

120-347V, 0-10V Dimmable Driver

Power Selectable  
(20W / 30W / 40W)

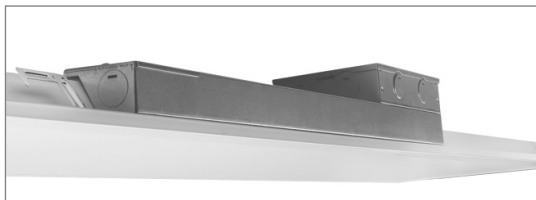
Seismic Clips Included

Colour Selectable  
(3000K/3500K/4000K)

Waffle Stamping  
increases heat dissipation and driver life

Less than 1.8" Deep  
ideal for tight plenum areas

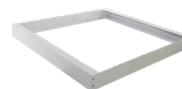
Junction Box (PLS-JB)  
sold separately



Accessories (Sold Separately)



Suspension Kit  
PLS-SUSKIT



Surface Mount Kit  
PLS22-SK



Junction Box  
PLS-JB



Recessed Frame Kit  
PLS22-RFK

## TECHNICAL DATA



### LIGHT SPECIFICATIONS

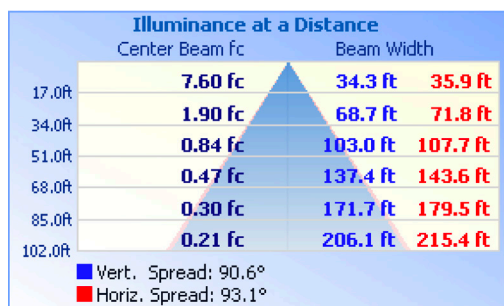
Lumens	5,000 lms @ 3000K
Efficacy	125 lm/w
CCT	Selectable (30K/35K/40K)
CRI	80
Dimmable	0-10V
Beam Angle	120°
L70 Life	50,000 hrs
Warranty	7-year

LUMEN OUTPUT			
	3000K	3500K	4000K
20W	2606 lm	2697 lm	2688 lm
30W	3698 lm	3873 lm	3810 lm
40W	4825 lm	5039 lm	4897 lm

### APPROVALS AND LISTINGS

ETL	5000444
DLC Premium	S-C4ADSV

### ILLUMINANCE AT A DISTANCE



### ELECTRICAL

Wattage	Selectable (20W/30W/40W)
Voltage	120-347V
Power Factor	0.9
THD	8%
Operating Temp	-20 to 40°C

### CONSTRUCTION

Housing	Metal
Lens Type	Prismatic
Finish	White
IP Rating	IP20
Product Dimensions	23.75 x 23.75 x 1.67 in
Carton Qty	4

### ACCESSORIES (SOLD SEPARATELY)

PLS22-SK	Surface Mount Kit
PLS22-RFK	Recessed Frame Kit
PLS-SUSKIT	Suspension Kit
PLS-JB	Junction Box

### DIMENSIONAL DRAWINGS (IN)

