

Date: _____ Project: _____
Prepared for: _____ Type: _____
Comments: _____

EMERGENCY BATTERY UNIT

275W | LED DOUBLE HEAD



SPECIFICATIONS

Surface-Mount / Conduit-Mount
Battery Capacity: 12Ah
LED Double Head (Tilt & 180° Rotation)
Test Function
Knockouts on Sides & Back
Input Voltage: 120-347VAC
Output Voltage: 12VDC
IP40 - Suitable for Damp Locations
Functioning Temperature: 15°C to 35°C

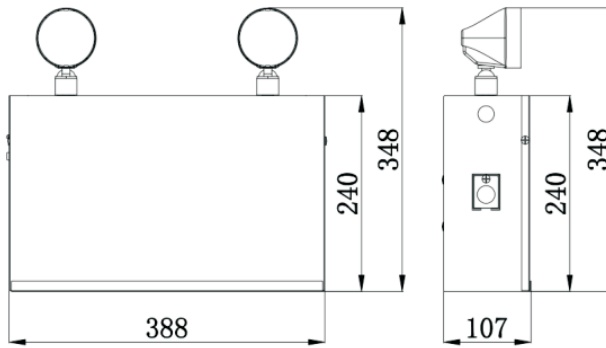
AVAILABILITY

275W
6000K-6500K
120-347VAC

*This icon indicates a STOCK item: Look for this Same Day Shipping icon below in 'Ordering Information' for products that ship on the same day (orders placed before 3pm) from Montreal, Quebec or Calgary, Alberta



DIMENSIONS



CIRCUITRY

Lead-Acid Battery: 12V/12Ah Recharge Time: 35 Hours	
AC Power Supply	AC120V, AC347V 50/60Hz
Battery Duration	≥ 30min at full capacity
	≥ 2 hours if the load is less than half of the capacity

ORDERING INFORMATION

SERIES	BATTERY DURATION	MAX UNIT POWER	LED POWER	LUMENS	AVAILABLE OUTPUT POWER	INPUT VOLTAGE	OUTPUT VOLTAGE	MODEL NUMBER
EMERGENCY BATTERY UNIT	2+ HOURS	275W	2 X 5W	720	265W	120-347VAC	12VDC	EX-BA3-275W-V1