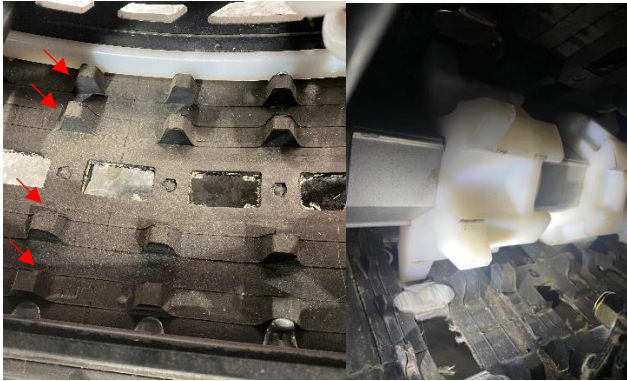


In 2021 Polaris debuted the Series 8 3.5 pitch 2.75" Paddle. 2021 Sleds with this track have an aluminum Hexagonal shape drive shaft with drivers that Avid calls "Center drive" style. This driveshaft has a single extrovert driver in the center of the shaft with two involute drivers on either side. The track on the 2021 has 4 rows of drive bumps between suspension rails as shown here: This design was also used on the 2022 Axys chassis sleds with the Series 8, 7, and 6 track option



2013-2021 Alum Hex driveshaft
4 rows of bumps between the rails. 2021 series 8, 7, 6, Camso, Powerclaw.

In 2022 Polaris re-designed the Series 8 3.5 pitch 2.75" Paddle track for the Matryx Chassis. Along with a re-design of the track they also changed the drive shaft for All models with Quick Drive. Models with the Series 8 track used a 7 Splined Aluminum Driveshaft that had what Avid calls "T3" style drivers. These sleds utilize a track that has 1 row of rubber drive bumps on both sides of each track window shown here: They also have a driveshaft that has splines or ribs extending very close to the ends of the driveshaft.



Photo's of a 2022 Series 8 Matryx Driveshaft/track combo. T3 Style drivers, for 2022 series 8, Skidoo tracks.

In 2022 Polaris also had **Series 6** (2.6" Paddle, 2.86" Pitch) and **Series 7** (3.0" Paddle, 3" Pitch) track options. Both of these options had driveshafts that looked similar to the one shown below. Again we call this the "Center Drive" style. Note the splines or ribs do NOT extend to the ends of this shaft, Avid refers to this shaft as 7 Spline Aluminum SS (for short spline). The tracks utilized with the Series 6 and and 7 have 4 rows of rubber drive bumps between the rails. Similar to what was found on 2021 Series 8 tracks



Photo of a 2022 7 spline Aluminum SS shaft with "Center Drive" style drivers.

- If you are installing a 2021 Series 8 track, Camso, Powerclaw (4 rows of bumps between the rails) you will need M-Series Drivers or Center Drive drivers.
- If you are installing a 2022/2023, series 8 track (rubber bumps on either side of the outer track windows) or a skidoo track you will need T3 style drivers.
- If you are installing a 2022/2023, series 8 track or a skidoo track on a 2022 7 Spline SS (short spline) you will need SS style drivers that have a longer hub to reach and grab splines toward the center of the shaft.
- If you are installing a 2021 Series 8, Camso, or Powerclaw track on a 2021 Aluminum Hex, 2022 7 Spline shaft, or a 2022 7 Spline Short Spline, (4 rows of bumps between the rails) you will need our M-Series Drivers or Center Drive drivers.

Please if you have any questions feel free to call.

Andy

Avid Products 406-261-4618