



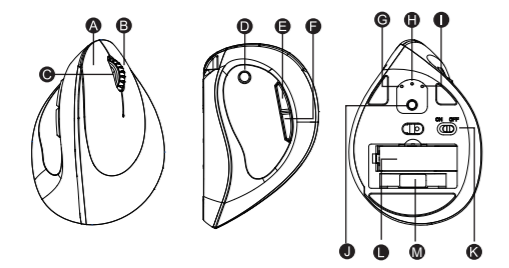
### USER MANUAL: QW PCM-275

# COVENTRY WIRELESS MOUSE



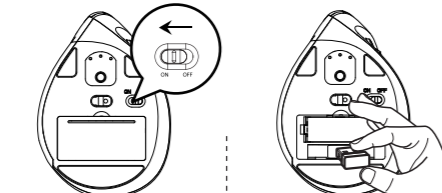
SILENT • THUMB BUTTONS • DPI SWITCH

### PRODUCT FUNCTION

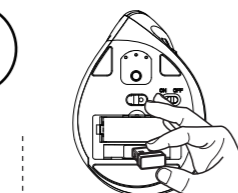


- A Left Button
- B Right Button
- C Scroll Wheel
- D DPI Switch Button
- E Forward Button
- F Backward Button
- G Bluetooth Indicator Light 2
- H Bluetooth Indicator Light 1
- I 2.4G Indicator Light
- J Mode Switch Button
- K Power Switch
- L Battery Storage
- M USB Receiver

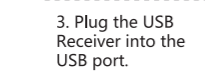
### 2.4GHZ CONNECTION



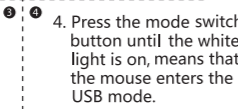
1. Slide the power switch to "ON".



2. Take out the USB receiver.

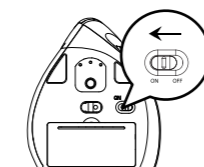


3. Plug the USB Receiver into the USB port.

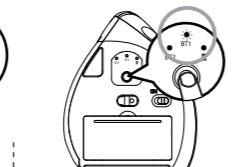


4. Press the mode switch button until the white light is on, means that the mouse enters the USB mode.

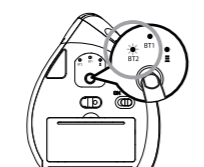
### BLUETOOTH® CONNECTION



1. Slide the power switch to "ON".



2. Press the mode switch button to switch to BT1 or BT2, the white light flashes slowly.

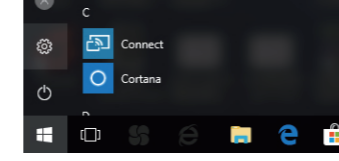


3. Long press the mode switch button for 3-5 seconds until the white light flashes quickly, means that the mouse enters the Bluetooth pairing mode.

### BLUETOOTH® CONNECTION

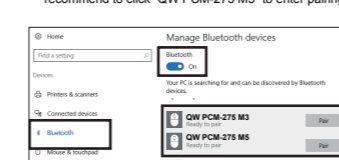
System Windows

4. Click "Setting"-Bluetooth-ON



QW PCM-275 M3 / QW PCM-275 M5

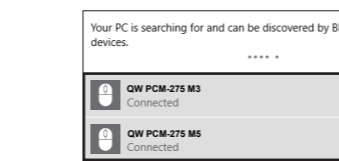
5. Search for "QW PCM-275 M3 / QW PCM-275 M5", recommend to click "QW PCM-275 M5" to enter pairing.



### BLUETOOTH® CONNECTION

6. The mouse will work when "QW PCM-275 M3 / QW PCM-275 M5" showed as "connected".

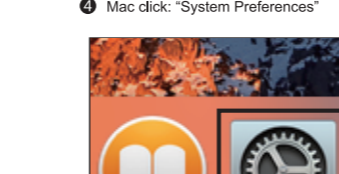
(System requirement: BT3.0 supports Win XP, Win7/8/10 or higher, Mac OS systems. BT5.0 supports Win8/10 or higher, Mac OS systems.)



For Mac OS

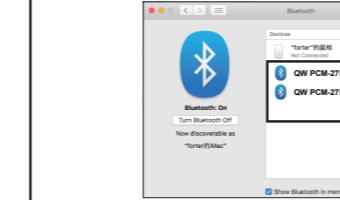
Please refer to Step 1-3 of Bluetooth Mode Connection before pairing.

4. Mac click: "System Preferences"



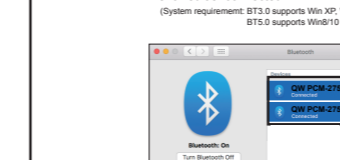
### BLUETOOTH® CONNECTION

5. System Preferences "click" Bluetooth



6. The mouse will work when "QW PCM-275 M3 / QW PCM-275 M5" showed as "connected".

(System requirement: BT3.0 supports Win XP, Win7/8/10 or higher, Mac OS systems. BT5.0 supports Win8/10 or higher, Mac OS systems.)



### BLUETOOTH® CONNECTION

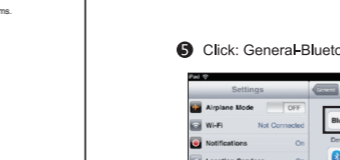
For iOS

\* This mouse supports iOS 13 or above. Please refer to Step 1-3 of Bluetooth Mode Connection before pairing.

4. Click on iPad: "Settings."



5. Click: General-Bluetooth-ON



### BLUETOOTH® CONNECTION

6. The mouse will work when "QW PCM-275 M3 / QW PCM-275 M5" showed as "connected".

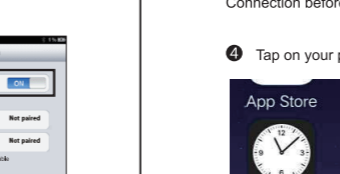
(System requirement: BT3.0 supports Win XP, Win7/8/10 or higher, Mac OS systems. BT5.0 supports Win8/10 or higher, Mac OS systems.)



For Android

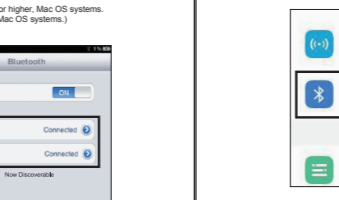
Please refer to Step 1-3 of Bluetooth Mode Connection before pairing.

4. Tap on your phone tablet: "Settings"



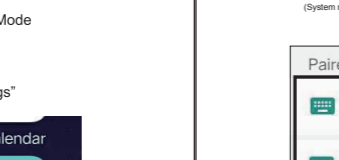
### BLUETOOTH® CONNECTION

5. "System Preferences" click "Bluetooth"



6. The mouse will work when "QW PCM-275 M3 / QW PCM-275 M5" showed as "connected".

(System requirement: BT3.0 supports Win XP, Win7/8/10 or higher, Mac OS systems. BT5.0 supports Win8/10 or higher, Mac OS systems.)



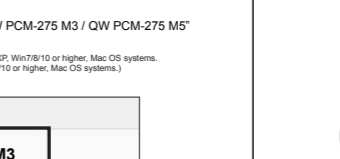
### BLUETOOTH® CONNECTION

After completing BT1, BT2 and 2.4G connection, short press the mode switch button on the bottom of the mouse to easily switch between devices.

BT1 Mode  
The light shows white



BT2 Mode  
The light shows white



2.4G Mode  
The light shows white



Short press the mode switch button on the bottom of the mouse.

### MAIN SPECIFICATIONS

Engine: Optical

Mouse DPI: 800/1200/1600 dpi

Mouse Button Life: 5 million times click

Battery : AA1.5V

Mouse Size: 108.91x78.23x68.18mm

Mouse Weight: 85.0±5.0g

2.4GHz Transmission Main Specifications:

Transmission Distance: 10 meters

Working Voltage: 1.5 V

Working Current: 15mA

Mouse Polling Rate: 250Hz

Bluetooth Transmission Main Specifications:

Transmission Distance: 10 meters

Working Voltage: 1.5 V

Working Current: 15mA

Mouse Polling Rate: 114Hz

System Requirement

2.4Ghz/BT3.0: Windows XP, Win7/8/10/11, Mac OS systems

BT5.0: Win8/10/11 Mac OS

Designed & produced by: Pirox International B.V.: NL-3045 AH, 101 • www.qware.nl • Made in China

Requires PC/mac with USB port. Comply with all Windows & Mac operation systems. Specifications, colours and contents may vary from illustrations. All trademarks and trade names are those of their respective owners.

