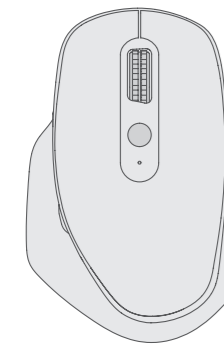




### USER MANUAL: QW PCM-265

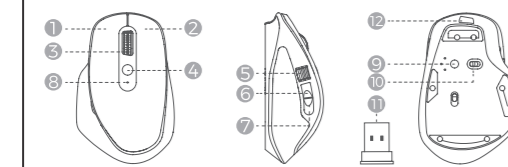


# YORK WIRELESS MOUSE

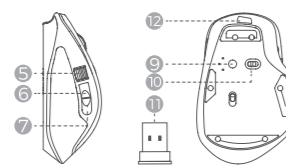
RECHARGEABLE • THUMB SCROLL



### PRODUCT FUNCTION

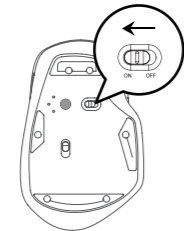


1. Left Button
2. Right Button
3. Scroll Wheel
4. DPI Button
5. Scroll Wheel
6. Forward Button



7. Backward Button
8. Power Indicator Light
9. Mode Switch Button
10. Switch
11. USB Receiver
12. Charging Port

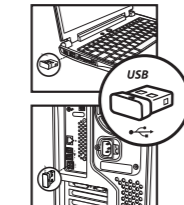
### 2.4GHZ CONNECTION



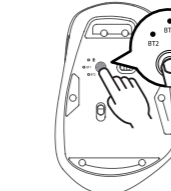
1. Slide the power switch to "ON".



2. Take the USB receiver.

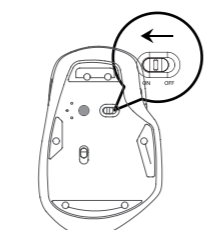


3. Plug the USB Receiver into the USB port.

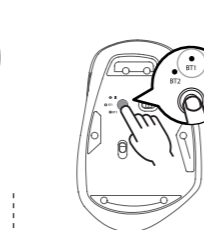


4. Press the mode switch button until the white light is on, means that the mouse enters the USB mode.

### BLUETOOTH® CONNECTION



1. Slide the power switch to "ON".



2. Press the mode switch button to switch to BT1 or BT2, the white light flashes slowly.

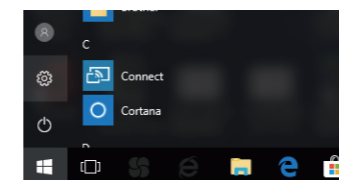


3. Long press the mode switch button for 3-5 seconds until the white light flashes quickly, means that the mouse enters the Bluetooth pairing mode.

### BLUETOOTH® CONNECTION

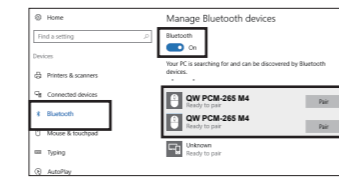
System Windows

4. Click "Setting"-Bluetooth-ON



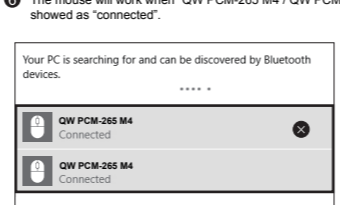
QW PCM-265 M4 / QW PCM-265 M4

5. Search for "QW PCM-265 M4 / QW PCM-265 M4", recommend to click "QW PCM-265 M4" to enter pairing.



### BLUETOOTH® CONNECTION

6. The mouse will work when "QW PCM-265 M4 / QW PCM-265 M4" showed as "connected".



For Mac OS

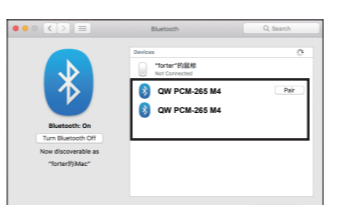
Please refer to Step 1-3 of Bluetooth Mode Connection before pairing.

4. Mac click: "System Preferences"

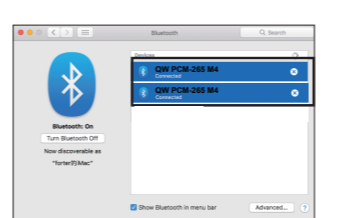


### BLUETOOTH® CONNECTION

5. System Preferences "click" Bluetooth



6. The mouse will work when "QW PCM-265 M4/ QW PCM-265 M4" showed as "connected".

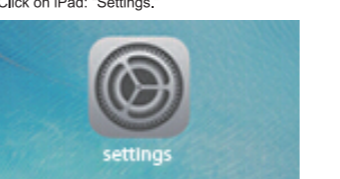


### BLUETOOTH® CONNECTION

For iOS

\* This mouse supports iOS 13 or above. Please refer to Step 1-3 of Bluetooth Mode Connection before pairing.

4. Click on iPad: "Settings."

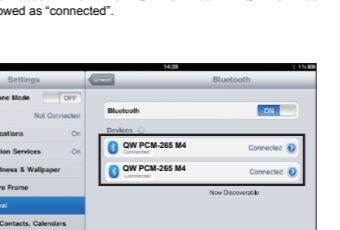


5. Click: General-Bluetooth-ON



### BLUETOOTH® CONNECTION

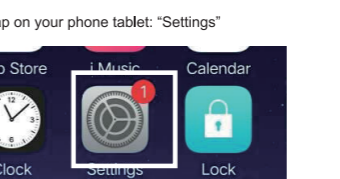
6. The mouse will work when "QW PCM-265 M4 / QW PCM-265 M4" showed as "connected".



For Android

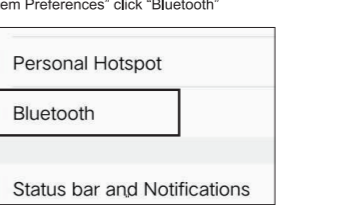
Please refer to Step 1-3 of Bluetooth Mode Connection before pairing.

4. Tap on your phone tablet: "Settings"

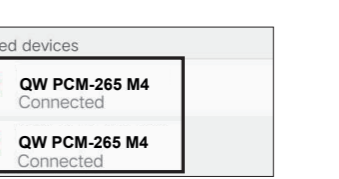


### BLUETOOTH® CONNECTION

5. "System Preferences" click "Bluetooth"

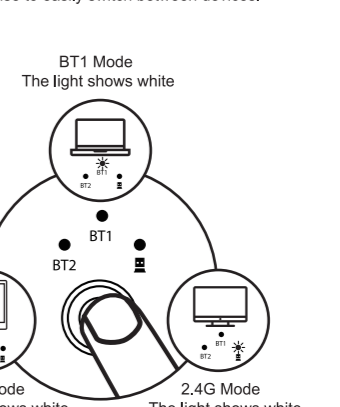


6. The mouse will work when "QW PCM-265 M4/ QW PCM-265 M4" showed as "connected".



### MULTI-CONNECT

After completing BT1, BT2 and 2.4G connection, short press the mode switch button on the bottom of the mouse to easily switch between devices.



Short press the mode switch button on the bottom of the mouse.

### MAIN SPECIFICATIONS

Engine: Optical  
 Mouse DPI: 800/1200/1600/2400/3200 dpi  
 Mouse Button Life: 5 million times click  
 Battery : 450 mAh rechargeable battery  
 Mouse Size: 120x78x45mm  
 Mouse Weight: 110g

**2.4GHz Transmission Main Specifications:**  
 Transmission Distance: 20 meters  
 Working Voltage: 1.5 V  
 Working Current: 15mA

**Bluetooth Transmission Main Specifications:**  
 Transmission Distance: 20 meters  
 Working Voltage: 1.5 V  
 Working Current: 15mA



Designed & produced by: Pirox International B.V.:  
 NL-3045 AH, 101 • www.qware.nl • Made in China

Requires PC/mac with USB port. Comply with all Windows & Mac operation systems. Specifications, colours and contents may vary from illustrations. All trademarks and trade names are those of their respective owners.