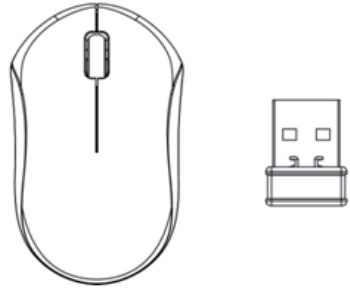
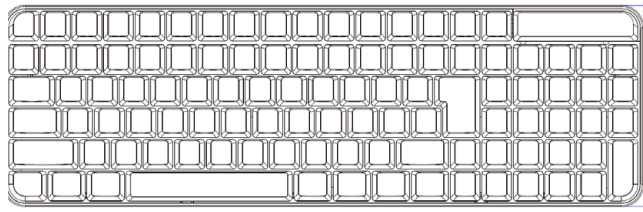


105mm



USER MANUAL: QW PCB-258



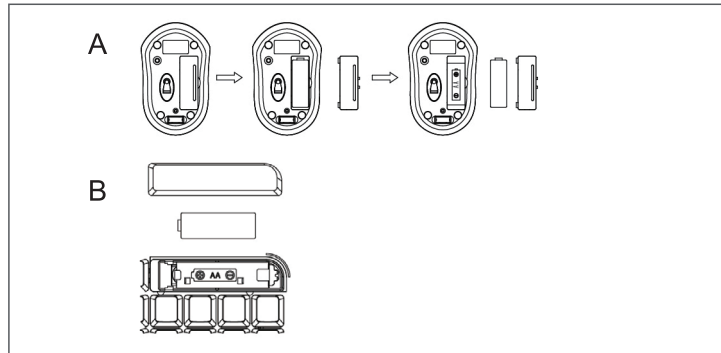
WATERFORD WIRELESS COMBO

FULL SIZE

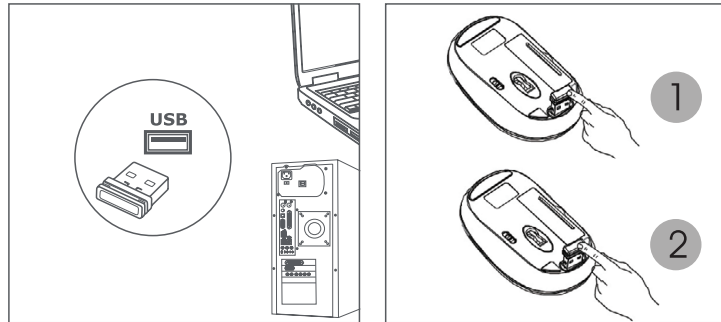
FULL-SIZE KEYBOARD • WIRELESS OPTICAL MOUSE

1

Guidance for first installation



1. Open the battery cover.
2. Insert one AA batteries into the battery compartment as picture A shown.
3. Insert one AA batteries into the battery compartment as picture B shown.



4. Plug in the receiver unit into an USB port of connector.
5. when you want use the mouse, you can take out the receiver to computer by the list 1 step;
6. when you need stop the work or to travel, you can store the receiver on the mouse for the moving by the list 2 step.

2

Guidance for first installation

Keyboard Hotkeys

- | | |
|------------------------|-------------------------|
| FN+ESC= Media Player | FN+F1= Play/Pause |
| FN+F2 = Previous Track | FN+F3=Next Track |
| FN+F4 = Volume Up | FN+F5=Volume Down |
| FN+F6 = Mute | FN+F7= Web Home |
| FN+F8 = Search | FN+F9 = My Favorite |
| FN+F10 = Mail | FN+F11 = Key Lock |
| FN+F12 = My Computer | FN+Insert=My Calculator |

Energy Saving Mode

The mouse goes into power saving mode when: Nano-receiver is not plugged into PC/notebook, Nano-receiver is switched off when plugged into the PC/notebook or when the mouse is no longer in use after 30 minutes. With the intelligent power saving mode to conserve power, the mouse switches to sleep mode after 8 mins. To get the mouse out of sleep or energy saving mode, use the scroll wheel or click any buttons to resume using the mouse

3

DOC

Pirox International B.V.

EC Declaration of Conformity

We
Pirox International B.V.
Blaak 6 | 3011 TA Rotterdam | The Netherlands

Hereby declare under our sole responsibility that the product:

Model number: QW PCB-250BL/QW PCB-250PK/QW PCB-250BU
Product description: Qware wireless combo Waterford

To which this declaration relates is in conformity with the requirements of the following standards:

The EMC directive 2014/30/EU;

EN 55032:2015
EN 55024: 2010+A1: 2015
EN 61000-3-2:2014
EN 61000-3-3:2013

The RED directive 2014/53/EU;

EN 60950-1: 2006+A11: 2009+A1: 2010+A12: 2011+A2: 2013
ETSI EN 301 489-1 V2.2.1 (2019-03)
ETSI EN 301 489-17 V3.2.0 (2017-03)

ROHS directive (EU) 2015/863 amending annex II to directive 2011/65/EU

REACH directive (EC) No.1907/2006 to determine 205 substances of very high concern (SVHC)

This certifies that the following designated product:

Model number: QW PCB-250BL/QW PCB-250PK/QW PCB-250BU
Product description: Qware wireless combo Waterford

Complies with the requirements of the following directives and carries the CE marking accordingly:

The EMC directive 2014/30/EU
The RED directive 2014/53/EU;
ROHS directive (EU) 2015/863 amending annex II to directive 2011/65/EU
REACH directive (EC) No.1907/2006

This declaration is the responsibility of the manufacturer / importer:

Pirox International B.V.
Rotterdam, 1 March, 2020

R.J. de Bruin,



4

DOC

- UK** CE COMPLIANCE
Hereby Pirox International B.V. declares that this product is in accordance with essential requirements and other relevant terms of the European regulation 2004/108/EC, RoHS 2011/65/EU.
- FR** CONFORMITE CE
Par la présente Pirox International B.V., déclare que l'appareil est conforme aux exigences essentielles et aux dispositions pertinentes de la Directive Européenne 2004/108/EC, RoHS 2011/65/EU.
- DE** CE-CONFORMITÄT
Hiermit erklärt Pirox International B.V., dass dieses Produkt die erforderlichen Voraussetzungen und andere relevante Konditionen der europäischen Richtlinie 2004/108/EC, RoHS 2011/65/EU erfüllt.
- IT** CONFORMITA ALLE NORME CE
Con la presente Pirox International B.V. dichiara che questo prodotto è conforme ai requisiti essenziali e agli altri termini rilevanti della Direttiva Europea 2004/108/EC, RoHS 2011/65/EU.
- NL** CE GOEDKEURING
Hierbij verklaart Pirox International B.V. dat dit product in overeenstemming is met de essentiële eisen en andere relevante bepalingen van Europese Richtlijn 2004/108/EC, RoHS 2011/65/EU.
- ES** CONFORMIDAD CON LA CE
Por la presente Pirox International B.V. declara que este producto cumple con los requisitos esenciales y las otras provisiones relevantes de la Directiva Europea 2004/108/EC, RoHS 2011/65/EU.
- PT** CONFORMIDADE CE
Pela presente a Pirox International B.V. declara que este produto está em conformidade com os requisitos essenciais e outras condições relevantes da regulamentação Europeia 2004/108/EC, RoHS 2011/65/EU.
- SE** CE-FÖRSÄKRAN
Härmed försäkras Pirox International B.V. att denna produkt uppfyller de nödvändiga kraven och andra relevanta villkor EU-direktivet 2004/108/EC, RoHS 2011/65/EU.
- DK** OVERENSSTEMMELSEERKLÆRING
Pirox International B.V. bekræfter hermed, at dette produkt er i overensstemmelse med væsentlige krav og andre betingelser i henhold til Rådets direktiv 2004/108/EC, RoHS 2011/65/EU.
- NO** CE-OVERENSSTEMMELSE
Pirox International B.V. erklærer herved at dette produkt er i overensstemmelse med de avgjørende kravene og andre relevante vilkår i den europeiske forskriften 2004/108/EC, RoHS 2011/65/EU.
- FI** CE-HYVÄKSYNTÄ
Täten Pirox International B.V. ilmoittaa, että tämä tuote on yhdenmukainen direktiivin 2004/108/EC, RoHS 2011/65/EU, olennaisten vaatimusten ja muiden asiaankuuluvien sopimusehtojen kanssa.
- RU** СООТВЕТСТВИЕ ТРЕБОВАНИЯМ CE
Настоящим компания Pirox International B.V. заявляет, что ее продукция соответствует основным требованиям и условиям Европейской Директивы 2004/108/EC, RoHS 2011/65/EU.
- PL** CERTYFIKAT ZGODNOŚCI CE
Pirox International B.V. niniejszym oświadcza, że ten produkt spełnia wszelkie niezbędne wymogi, a także inne istotne warunki dyrektywy europejskiej 2004/108/EC, RoHS 2011/65/EU.
- GR** ΣΥΜΜΟΡΦΩΣΗ ΜΕ CE
Η Pirox International B.V. δηλώνει, διά του παρόντος, ότι αυτό το προϊόν συμμορφώνεται με τις ουσιαστικές απαιτήσεις και τους λοιπούς όρους του ευρωπαϊκού κανονισμού 2004/108/EC, RoHS 2011/65/EU.

5

Troubleshooting

Restoring Factory Default Settings

Mouse:

- When the enduser finds the wireless mouse doesn't work, please check:
1. Whether the battery is used out, if yes, please replace with new battery;
 2. If the led on mouse bottom is off, please do the following steps to recovery the default setting (automatic pairing):
Step one: unplug and plug again the nano receiver onto an available USB port of computer,
Step two: make the wireless mouse close to the nano receiver (within 10 cm), take out the battery and install the battery again inside the Battery compartment, if we find the Led on the mouse bottom on, we can start using the wireless mouse again.

Keyboard:

- If the enduser finds the wireless keyboard doesn't work, please check:
1. Whether the battery is used out, if yes, please replace with new battery;
 2. If the still doesn't work, please do the following steps to recovery the default setting (automatic pairing):
Step one: unplug and plug again the nano receiver onto an available USB port of computer,
Step two: move the wireless keyboard close to the nano receiver (within 10 cm), take out the battery and install the battery again inside the Battery compartment, if we can see the led of the keyboard keep flashing , we can start using the wireless keyboard again.



Designed & produced by: Pirox International B.V.:
NL-3045 AP, 101 • www.qware.nl • Made in China

Requires PC/mac with USB port. Comply with all Windows & Mac operation systems. Specifications, colours and contents may vary from illustrations. All trademarks and trade names are those of their respective owners.

