

Microsoft Surface Hub 2S 85"

Bridging the digital and physical divide in today's hybrid workspaces

Meet The Newest Member of the Microsoft Surface Hub 2S Family



Microsoft Surface Hub 2S 85"

Surface Hub 2S 85" coming January 2021. Pre-release product shown; product and features subject to change and may vary by country/region. Products and features subject to regulatory certification/approval; actual sale and delivery is contingent on compliance with applicable requirements.

Microsoft Surface Hub 2S

Bridging the digital and physical divide in today's hybrid workspaces



Microsoft Surface Hub 2S 85"



Microsoft Surface Hub 2S 50"

The way we work has changed

Remote and hybrid work bring benefits but also challenges



Social distancing

Social distancing, also called “physical distancing,” means keeping a safe space between yourself and other people who are not from your household. To practice social or physical distancing, stay at least two metres (about 2 arms’ length) from other people who are not from your household in both indoor and outdoor spaces.



Perception of non-verbal interactions and cues

For employees participating in in-person meetings, it can be easier to “read the room”, pick up on non-verbal interactions and cues from other participants and gain a sense of the audience – especially valuable when presenting and determining if adjustments need to be made.



Collaborative ideation

While remote work tends to favor ‘solo work,’ physical workspaces better support the collaborative generation of new ideas, finding clarity and alignment within a team and the ability to set goals and change direction as a team.



Social connections and support

The social connections, social support and workplace friendships present in physical workspaces, are critical to work satisfaction and task performance. Remote workers report greater feelings of isolation and loneliness, and struggle to replace casual, spontaneous “watercooler” conversations.

Understanding the needs of the new hybrid workplace

At 77.4" in width, the Surface Hub 2S 85" provides over six feet of space edge to edge on an anti-glare 4K screen large enough to accommodate distancing participants with good viewing angles anywhere in the room. Use your own personal Surface Slim Pen on Surface Hub 2S if you choose and join a meeting from your personal PC or mobile through Proximity Join and Coordinated meetings through Microsoft Teams¹ to minimise physical contact when necessary.

Both the Surface Hub 2S 50" and the Surface Hub 2S 85" ship with a wide field of view camera that easily capture participants who are distancing further apart. The six-element, Teams certified microphone array can capture participants who are further apart than usual while continuing to reduce background noise with beamforming, automatic gain correction, and noise reduction.

The Steelcase Roam cart allows you to easily move the Surface Hub 2S 85" or the Surface Hub 2S 50" to wherever it is needed. If a particular space is getting too crowded, simply move to a less crowded space and stay in your flow.



Stay apart and stay in the flow with wide camera FOV

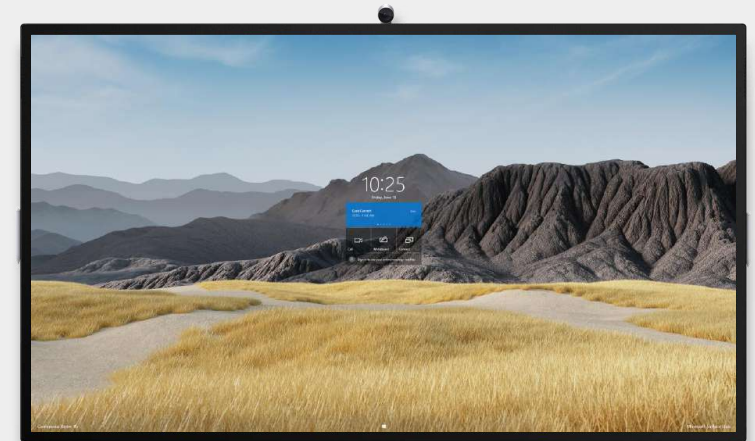
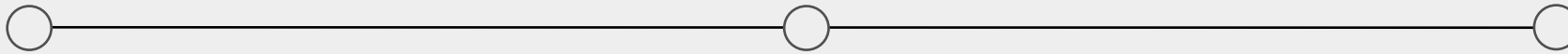


A defining history

In 2015, Microsoft introduced the Surface Hub: The first team device designed to unlock the power of the group. Created with a simple, intuitive Windows interface designed for groups, with ink and touch at its core.

In 2019, Microsoft advanced its vision to empower teams in the modern workplace with Surface Hub 2S, an elegant, portable, interactive device that can move from one space to another without disrupting your team's flow.

The latest addition, at more than 85", has brought customers a larger screen in a smaller chassis than the previous version, with bezels that are 45% smaller, a display that is 20% thinner, and overall 30% lighter in weight than the original Surface Hub 84".





Surface Hub 2S 85"

A Surface Hub 2S for larger spaces

Built for teams to meet and collaborate wherever they work

Massive 85.6" canvas invites simultaneous inking in Microsoft Whiteboard, plus larger-than-life remote attendees in Microsoft Teams.

Consistent Surface Hub 2S experience

Same premium design, bezels, OS, 4k+ display technology, touch, pen/ink, compute cartridge, and camera support as Surface Hub 2S 50"

Integrates with existing/new AV systems

For A/V focused meetings, combine with Microsoft Teams certified peripherals or integrate with Microsoft Teams Rooms¹ for the best audio experience

\$38,699 NZD

Product Reservations Dec 2020

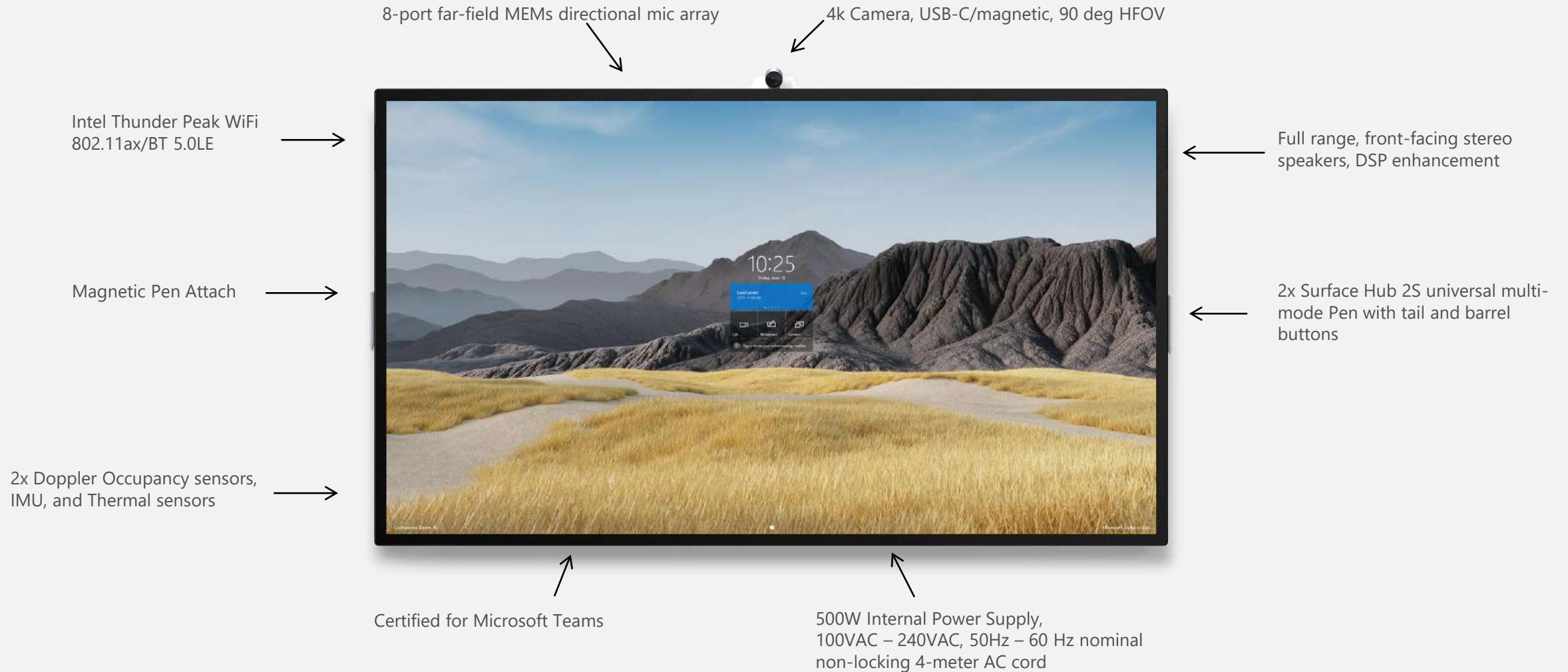
Available Jan 2021



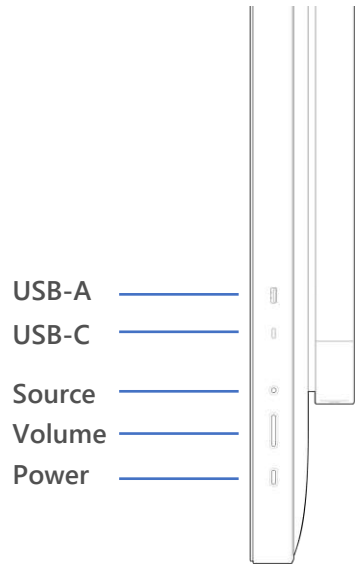
Surface Hub 2S 85" key specifications



Surface Hub 2S 85" key specifications



Surface Hub 2S 85" installation and ports



VESA 600 x 600 mounting points

USB-C (4) and USB-A for use with USB compatible accessories

Thoughtful installation and service experience: Can be carried by the bezel and tilted.

Modular and updateable

Surface Hub 2 is designed to meet your needs today and into the future. As new software, hardware, and services become available, you can easily unlock the best experiences from Microsoft.



Intel® i5 , 8GB DDR4, 128GB
M.2 2230 SSD

Intel® HD Graphics 630

Mini-DisplayPort
Out

HDMI
In

USB-C
DP-Alt

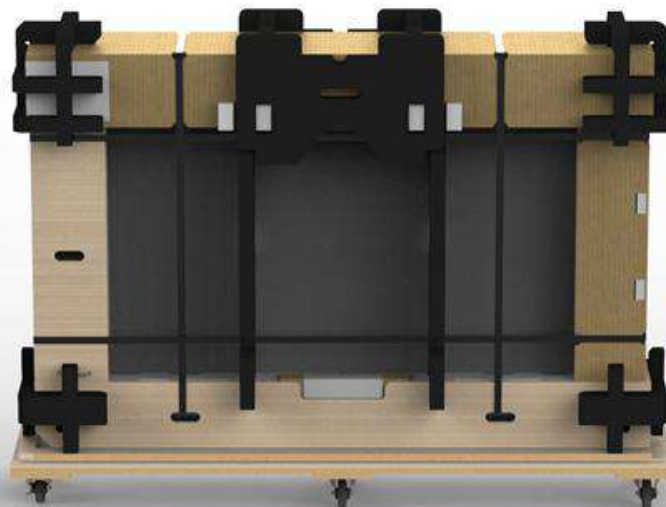
USB-A

RJ-45 Gigabit
Ethernet

Thoughtfully Designed Packaging



Total packaging weight on pallet is 96kg.
(excludes device)



Wheels on pallet will allow for easier deployment



Total inner packaging weight is 40kg. (excludes device)

Added hand holds in corners allow for an easier move off the pallet



Windows 10 Pro and Enterprise on Surface Hub 2

All the benefits of Surface Hub 2S as an all-in-one device but optimised for personal use

Windows 10 Pro and Enterprise* on Surface Hub 2¹ enables customers to break the monotony of sitting at one's desk all day and allows our customers to stand, move around and meet with remote participants more naturally and invitingly.

Users can quickly sign in with Windows Hello using the Surface Hub 2 Fingerprint Reader² which is exclusively available for use with Windows 10 Pro and Enterprise on Surface Hub 2.

With the availability of Windows 10 Pro and Enterprise on Surface Hub 2, customers can also create custom kiosk mode configurations in targeted environments – just like you would on any Windows 10 PC. The possibilities are endless with Windows 10 Pro and Enterprise on Surface Hub 2.



Windows 10 Pro and Enterprise on Surface Hub 2

Simplified management and security



Standard Windows 10 management tools

Enterprise administration from standard Windows 10 tools like Microsoft Endpoint Manager—both SCCM and Intune—are enabled.



Chip to cloud Surface Hub security updates

High-standard, seamless security, with automated updates from the Windows 10 OS to the device firmware (UEFI), all from Windows Update for Business.



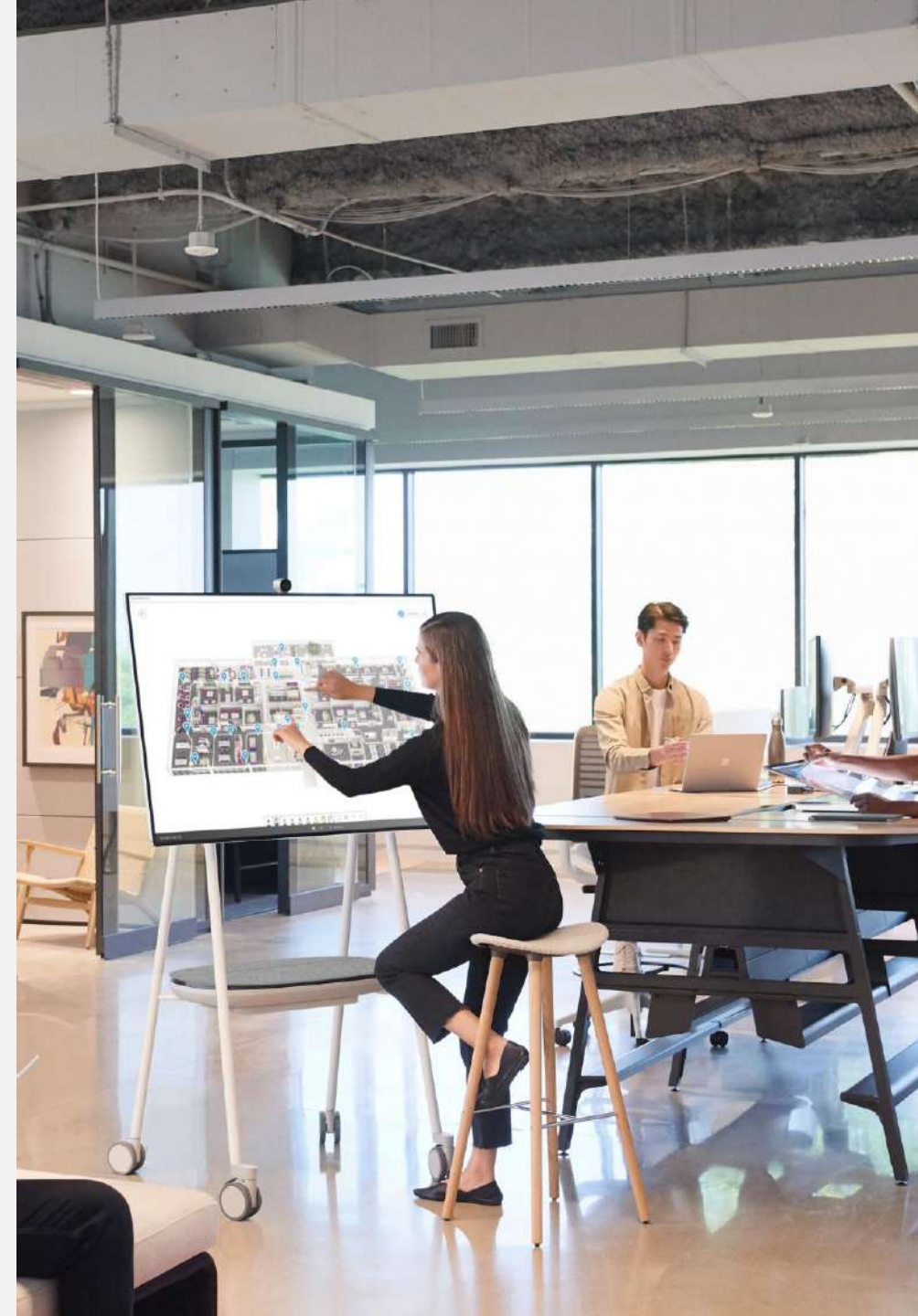
Remote administration of Surface Hub UEFI

Surface UEFI (BIOS) can be managed and locked by Surface Enterprise Management Mode, to prevent OS and device tampering.



Guides available for management and security

Documentation updates (addition to Surface Hub Admin Guide) now available.



Surface Hub 2 Fingerprint Reader

Designed Exclusively for Windows 10 Pro or Enterprise* on Surface Hub 2S



Supports Windows 10 Hello

Easily walk up and sign into Windows with a single tap through Windows Hello



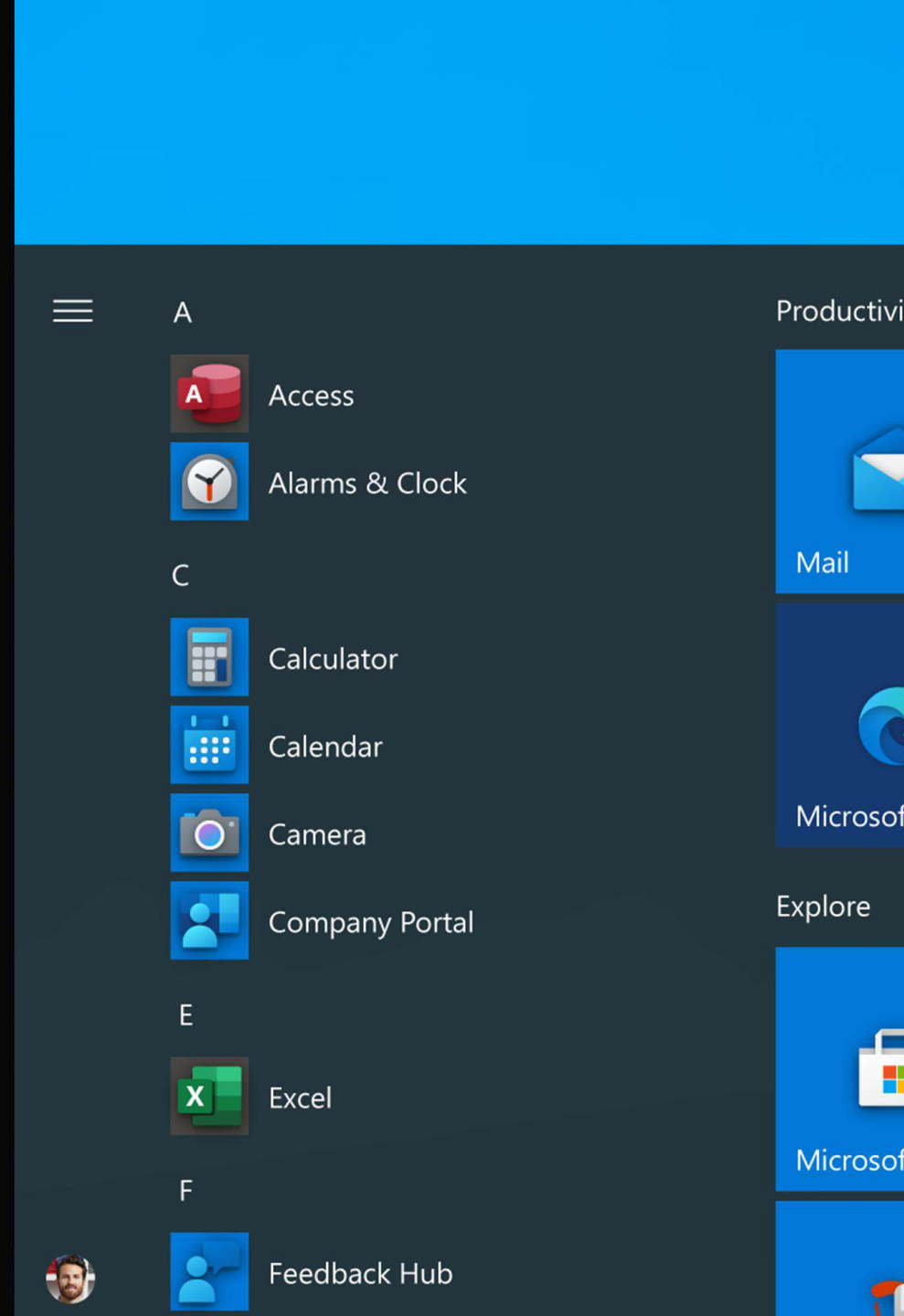
Designed for Surface Hub 2S

The Surface Hub 2S Fingerprint Reader has been thoughtfully designed to naturally fits the contour of the Surface Hub 2S and not create a bulky eye-sore



Safe and Secure

The Surface Hub 2S Fingerprint Reader is custom-designed for Surface Hub 2S and meets the highest standards of security and reliability.



Windows 10 Team 2020 Update



High impact deployment features

Azure Active Directory Joined (AADJ) & Single Sign On (SSO)
Conditional Access (CA) support
Non-Global Admin support for AADJ devices
Modern Authentication (Deprecate Basic Auth)

Meetings experience improvements*

Coordinated Join with Microsoft Teams Room
Proximity Join for Microsoft Teams meetings
Microsoft Teams as default meetings and calling app

Additional enhancements

Dual-pen inking support on 2S devices
Brightness adjustment slider on 2S devices
FIDO2 passwordless authentication

Platform improvements

20+ new/updated Device Management policies
Wireless projection (Miracast) improvements
Security, privacy, accessibility, and app platform updates

Appendix

Surface Hub 2 accessories



Surface Hub 2 Pen¹

Write fast and precise with the Surface Hub 2 Pen. Enjoy a natural writing experience with highly responsive touch and inking capabilities.



Surface Hub 2 Camera²

See every detail in crystal clarity with the Surface Hub 2 Camera. With 4K resolution and wide angle lens, meetings come to life right before your eyes.



Surface Hub 2 Fingerprint Reader³

Sign with the tap of a finger with the Surface Hub 2 Fingerprint Reader. Enjoy Windows Hello sign-in exclusively with the Windows 10 Pro and Enterprise on Surface Hub 2 configuration.

Technical specifications: Surface Hub 2S 85"

US MSRP \$21,999

Dimensions	44.5" x 77.1" x 3.4" (1130mm x 1959mm x 85.6mm)	Graphics	Intel® UHD Graphics 620
Display	Screen: 85" PixelSense™ Display Resolution: 3840 x 2160 Aspect ratio: 16:9 Touch: 20-point multi-touch	Connections	USB-A Mini-DisplayPort Video Output RJ45 Gigabit Ethernet HDMI Video Input
Memory	8GB RAM	Cameras, video, and audio	100Hz - 12KHz range 3-way stereo speakers, including (4) front-facing mid-range, (2) front-facing tweeter and (1) rear bass drivers Full band 8-element MEMS microphone array Microsoft Surface Hub 2 Camera, 4K, USB-C® connection, 90 degree HFOV
Processor¹	Quad-core 8th Generation Intel® Core™ i5 processor	Wireless	Wi-Fi 5: IEEE 802.11 a/b/g/n/ac compatible Bluetooth® Wireless 5.0 technology Miracast Display
Security	Firmware TPM chip for enterprise security and BitLocker support	Exterior	Casing: Precision machined aluminum with mineral-composite resin Color: Platinum Physical Buttons: Power, Volume, Source
Software	Windows 10 Team Edition Microsoft Teams for Surface Hub* Skype for Business* Microsoft Whiteboard Microsoft Office (Mobile) Microsoft Power BI*	Warranty	1-year limited hardware warranty
Sensors	Doppler occupancy sensor		
What's in the box	(1) Surface Hub 2S (2) Surface Hub 2 Pen (1) Surface Hub 2 Camera 4m AC Power Cable Quick Start Guide		
Weight	185 lb (84kg)		
Storage	128GB SSD ¹		

Technical specifications: Surface Hub 2S 50"

US MSRP \$8,999

Dimensions	29.2" x 43.2" x 3.0" (741 mm x 1097 mm x 76 mm)	Graphics	Intel® UHD Graphics 620
Display	Screen: 50" PixelSense™ Display Resolution: 3840 x 2560 Aspect ratio: 3:2 Touch: 20-point multi-touch	Connections	USB-A Mini-DisplayPort Video Output RJ45 Gigabit Ethernet HDMI Video Input
Memory	8GB RAM	Cameras, video, and audio	Full range front facing 3-way stereo speakers Full band 8-element MEMS microphone array Microsoft Surface Hub 2 Camera, 4K, USB-C™ connection, 90 degree HFOV
Processor¹	Quad-core 8th Generation Intel® Core™ i5 processor	Wireless	Wi-Fi 5 (IEEE 802.11 a/b/g/n/ac compatible) Bluetooth Wireless 4.1 technology Miracast Display
Security	Firmware TPM chip for enterprise security and BitLocker support	Exterior	Casing: Precision machined aluminum with mineral-composite resin Color: Platinum Physical Buttons: Power, Volume, Source
Software	Windows 10 Team Edition Microsoft Teams for Surface Hub* Skype for Business* Microsoft Whiteboard Microsoft Office (Mobile) Microsoft Power BI*	Warranty	1-year limited hardware warranty
Sensors	Doppler occupancy sensor Accelerometer Gyroscope		
What's in the box	(1) Surface Hub 2S (1) Surface Hub 2 Pen (1) Surface Hub 2 Camera 2m AC Power Cable Quick Start Guide		
Weight	61.6 lbs. (28 kg)		
Storage	128GB SSD ¹		

Microsoft Service Offerings for the Surface Hub 2S family

	Worldwide Hardware Warranty	Worldwide Extended Hardware Service
Extended Hardware Service	NA	✓
Accidental Damage		No
Coverage Duration	1Y	2Y and 3Y options; no 5Y option
Number of repairs		3
Number of replacements	At Microsoft discretion repair or replace	1
Limit of liability		Up to original purchase price
In Box Accessories	✓	✓
Standard Exchange	✓	✓
Advanced Exchange	No	As needed, through CSS
In Person Repair/Replace	✓	✓
Concierge	NA	Live online and video training
Software support	90 days	Through coverage duration
Renewable	NA	No
Out of warranty paid offers	✓	✓

Surface Hub 2 Pen technical specifications

Dimensions	5.94" x 0.64" x 0.56" (151 mm x 16.3 mm x 14.3 mm)
Weight	0.09 lbs. (41 g)
Buttons	Barrel button and tail eraser
Color	Grey
Connector type	Bluetooth 4.0
Compatibility	Surface Hub 2S Surface Book 2 ¹ Surface Book Surface Studio 2 ¹ Surface Studio ¹ Surface Laptop Surface Go Surface Go with LTE Advanced Surface Pro 6 ¹ Surface Pro (5th Gen) ¹ Surface Pro (5th Gen with LTE Advanced) ¹ Surface Pro 4 Surface Pro 3 Surface 3

Surface Hub 2 Camera technical specifications

Dimensions	2.26" x 2.18" x 1.65" (57.5 mm x 55.3 mm x 42 mm)
Weight	0.19 lbs. (88.01 g)
Connection	USB-C™ (with magnetic attach)
Resolution	4K
Field of View	90 degree HFOV
Imaging Features	Anti-flicker Face based auto exposure Up to 30 frames per second

Learn more at <https://www.microsoft.com/surface/business/surface-hub-2>

Sanitizing Surface Hub 2S 50" and 85"

Surface Hub 2S can be sanitised using a variety of CDC approved disinfectants that will not damage the device/screen

Isopropyl alcohol (IPA) solution 70% or less

PDI Sani-Cloth® Plus

Covidien™ Alcohol Prep pads

CaviWipes™

Total Solutions® Disinfectant Wipes

Further information can be found at: <https://support.microsoft.com/help/4023504/surface-clean-and-care-for-your-surface>



Surface Hub Authentication

Secure, reliable authentication, however the user wants



Fingerprint Reader

Use Windows Hello for Business biometric authentication, secured via physical TPM 2.0 encryption

Available with:

Windows 10 Pro or Enterprise on Surface Hub 2S 50" only



Authenticator App

Passwordless phone authentication via the Microsoft Authenticator App. Requires AAD configuration

Available with:

Windows 10 Pro or Enterprise on Surface Hub 2S 50"
Windows 10 Team 2020 Update



FIDO2 Key

Personal USB key providing M365 passwordless authentication. Like a car key that belongs to you

Available with:

Windows 10 Team 2020 Update

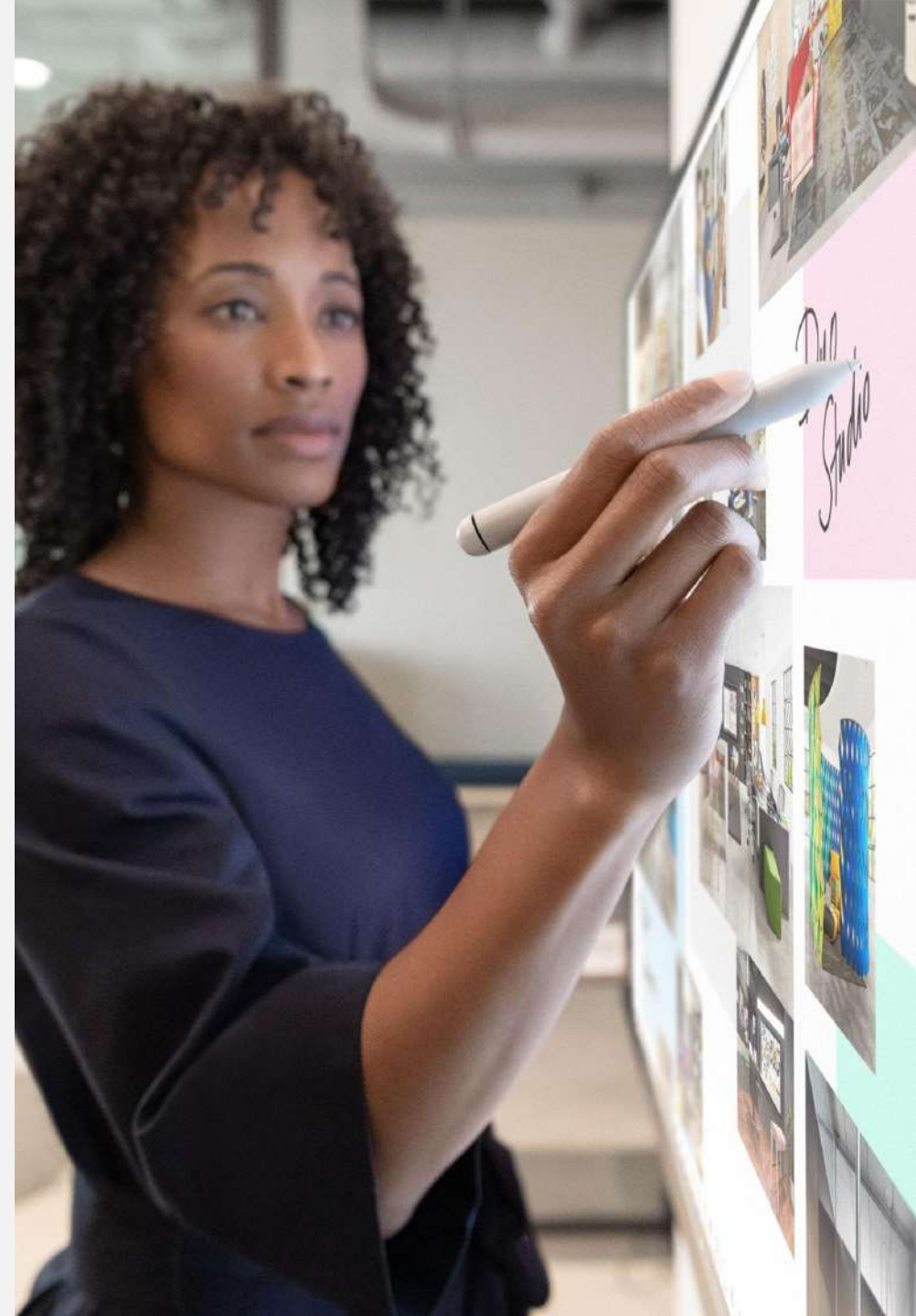


Username & Password

Utilise your username and password on keyboards to secure authentication and login

Available with:

Windows 10 Pro or Enterprise on Surface Hub 2S 50"
Windows 10 Team 2020 Update



Deployment Process for Windows 10 Pro and Enterprise on Surface Hub



1. Unlock your Device

Recently, a UEFI update was pushed to all Surface Hub devices via Windows Update to enable Surface Hub OS conversion to Windows 10 Pro



2. Wipe existing Operating System

The Surface Enterprise Management Mode (SEMM) management tool has been updated to support “booting to an alternative OS” (adds UI option), which wipes clean the Team OS security policy for the very next boot only.



3. Install new Win 10 Pro/Enterprise and Surface Hub Drivers

The MSI Driver/FW pack is published to allow commercial users to provide their own image.



4. Guides available for deployment

Documentation updates (addition to Surface Hub Admin Guide) are now available to perform the OS conversion process.



Surface Hub Windows 10 Team 2020 deployment options

Deployment Options



Out-of-box Experience

Initial setup requires configuration specifics to join the network and enterprise



Provisioning Packages

Use Windows Configuration Designer (WCD) to configure and load setup via a .ppkg thumb drive

