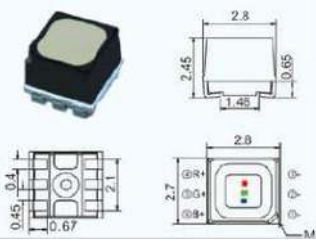
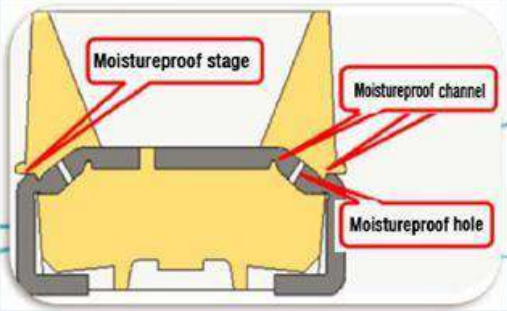


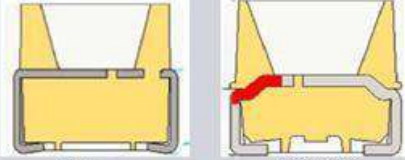
PH8.3mm SMD 3in1 Outdoor Full Color LED Display Screen

| Model | | P8.3-OR | | | | |
|---|-------------|----------------|------------|------------|------------|------------|
| 1.LED | | | | | | |
| Diagram | Model | Color | Intensity | View Angle | Wavelength | Test Cond. |
|  | SMD 2727 | | 300~400mcd | 140/140 | 620~630nm | 25°C,20mA |
| | | | 600~780mcd | 140/140 | 520~535nm | 25°C,15mA |
| | | | 100~125mcd | 140/140 | 465~475nm | 25°C,10mA |


The Outdoor LEDs we choose have the high reliability and contrast, wide view angle and good consistency which meet the need of high brightness, high refresh rate, high gray scale and keep natural color at one time with best color uniformity.



1. High brightness
White lens, high luminous intensity
2. High contrast
Black coating, matte encapsulation with non-mirror reflection
3. High reliability
Dust-proof, Water-proof, UV-proof
4. Long lifespan
Good thermal dissipation, low luminous degradation and power consumption



Other Unit LED



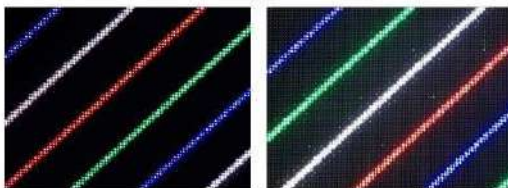
Other Unit LED

LED Module 400x300mm



To achieve the best visual performance of our indoor and outdoor led display, we use the best Driving IC, with high refresh rate, high grey level with latest technology.

De-Ghosting(Lower Ghosting)



↑
Unit LED

↑
Common

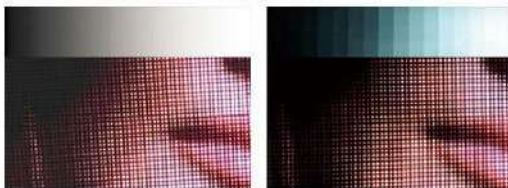
Color Uniformity



↑
Unit LED

↑
Common

Grey Level



↑
Unit LED

↑
Common

Refresh Rate



↑
Unit LED

↑
Common

| | |
|-----------------|--------------------------------------|
| Resolution | 48(H)×36(V) |
| Pitch | 8.3mm |
| Density | 14400 pixels/m ² |
| LED Arrangement | SMD2727 |
| Driver Mode | Dynamic 1/6 Duty constant current |
| Size | 400mm×300mm |
| Mask | Pure Black mask-high contrast screen |

OF800 LED Cabinet 800X900mm





| | |
|--------------------|--------------------------|
| Resolution | 96(H) ×108(V) |
| Size | 800mm×900mmX960mm |
| LED Modules | 2x 3= 6pcs |
| Weight | About 32 kg |

| 4.Electricity Parameter | |
|--------------------------------|---|
| Optical Ratings | |
| Brightness | ≥6500cd/m ² |
| Cabinet dimension | 800x900mm |
| Cabinet resolution | 96(H) ×108(V) |
| Pixel pitch | 8.3mm |
| LED configuration | SMD 3 in 1 |
| View Angle | 140 degree (horizontal) 140degree(vertical) |
| Cabinet material | Aluminium |
| View Distance | 10m-100m |
| Gray Scale | 14bits input, correction with 16bits |
| Contrast | 11.000:1 |
| Display Color | 16.7M |
| Brightness Adjustment | 0-100 levels |
| Power Supply | |
| Operation Power | AC100-240V 50-60HZ Switch-able |
| Maxim Power Consumption | 700 W/m ² |
| Average Power Consumption | 230 W/m ² |
| Control System | |
| Correction Scale Level | 16bits |
| Frame Update Frequency | 60-75Hz |
| Screen Refresh Frequency | 1920Hz |
| Gamma Correction | -5.0—5.0 |
| Support Input | Composite Video, S-Video, DVI, HDMI., SDI, HD_SDI |
| Control Distance | Ethernet cable 100m, optical fiber 5km |
| Support VGA Mode | 800×600,1024×768,1280×1024,1600×1200 |
| Color Temperature | 2000-9300 adjustable |
| Brightness Correction | dot by dot, module by module, cabinet by cabinet |
| Reliability | |
| Operating Temp. | -20-60 Celsius degree |
| Operating Humidity | 10-95% RH |
| Operating Life | 100,000 hours |
| MTBF | 5000 hours |
| Continuous Working Time | ≥48 hours |
| Protection Level | IP65 / IP54 |
| Out of Control Pixel Rate | 0.01% |

