

MAXHUB Collaboration Display

The V6 ViewPro Series

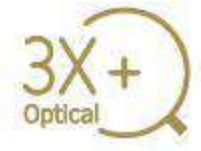
MAXHUB

The Excellent Way to Collaborate

The MAXHUB V6 ViewPro Series has set a new standard in professional audiovisual collaboration. Agile organizations can experience next-level video conferencing, which gives a different view of work.



48MP + 8MP dual-camera



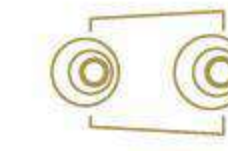
3X optical zoom



92° HFOV



Auto-Framing



Side speaker



MAXHUB OS 6.0



AI noise reduction,
AGC, AEC



12-meter voice
pickup range



$\Delta E \leq 2$ professional-grade
color accuracy



Antibacterial design



10th Gen Intel CPU

Virtually Face-to-Face

48MP + 8MP dual-camera 3X optical zoom WDR Auto-Framing Speaker-Tracking

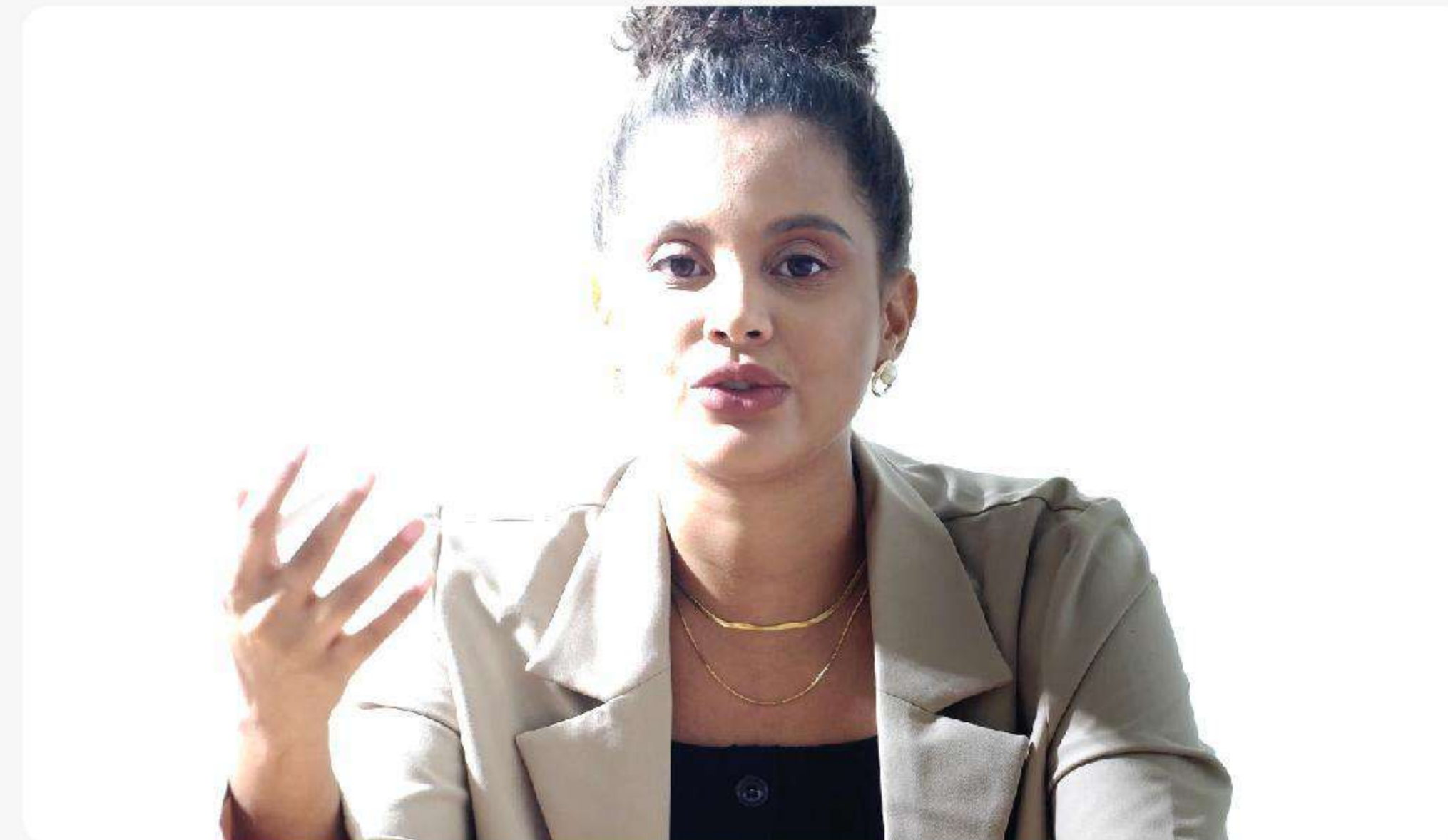
Ultra-clear picture quality is guaranteed as the MAXHUB V6 ViewPro Series adapts to varying lighting conditions. There's no need to move seats as the panel automatically adjusts to the number of meeting participants, and where they're located in the room. Homing in on faces, remote discussions are comparable to meeting face to face.



The MAXHUB V6 ViewPro Series' newly upgraded 48MP + 8MP dual-camera with 3X optical zoom delivers sensational high-resolution clarity at any distance. Using a Sony 1/2-inch Sensor with a 92° HFOV lens, every participant is seen and heard, even in large conference rooms.



WDR technology maintains ideal lighting contrast, preserving image clarity – even under extreme lighting conditions.



Without WDR



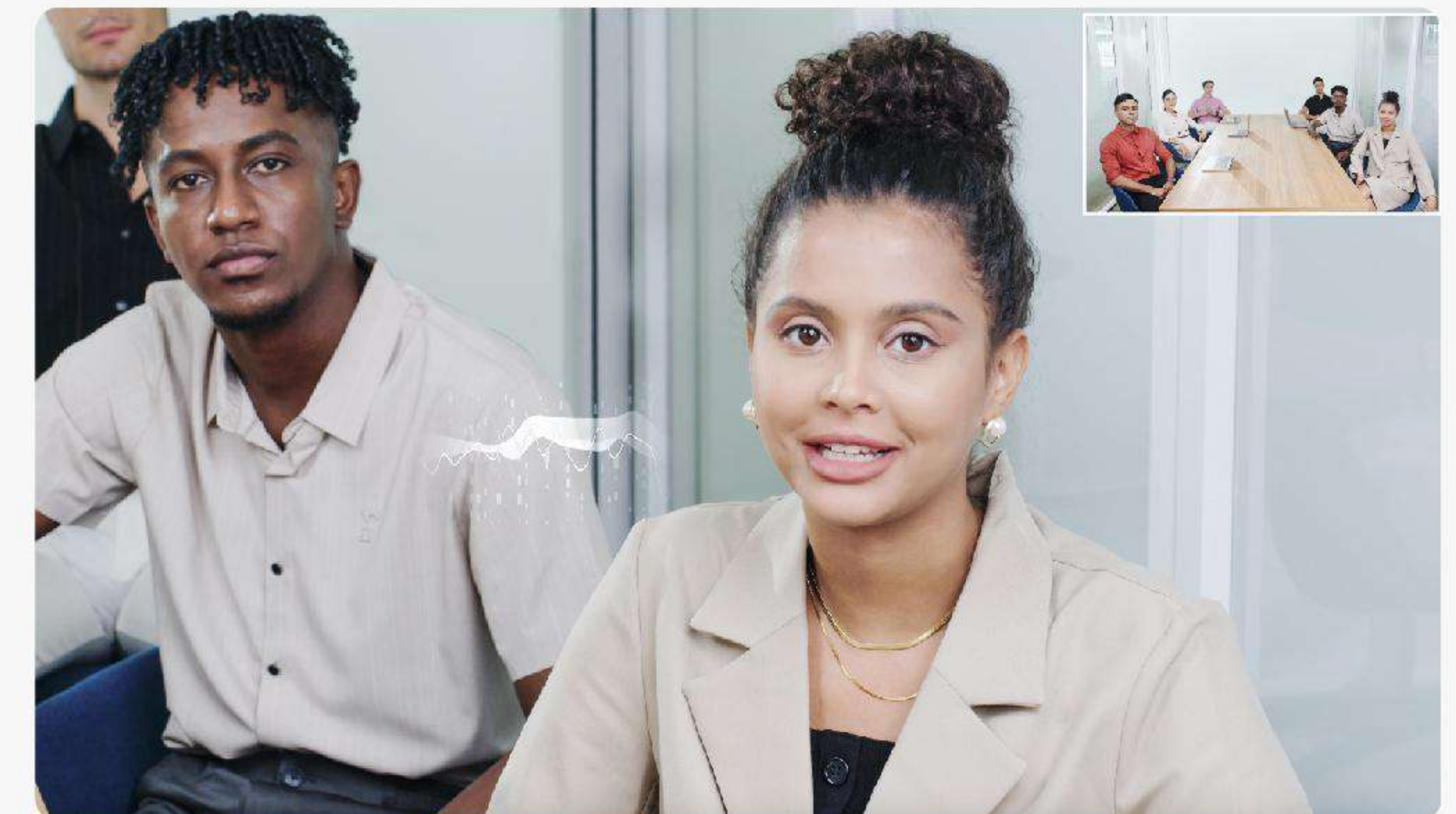
With WDR

With auto-framing, the display automatically adjusts to achieve the best angle based on the number of participants and their location – just like collaborating in person.

*Supports up to 30 people. Working distance within 10 meters.



The camera automatically tracks speakers during team collaboration, simulating face-to-face communication thanks to speaker-tracking.



Focused, Noise-Free Meetings

- Automatic gain control
- Acoustic echo cancellation
- Full duplex
- Echo reverberation

Equipped with 8 array microphones at a 180-degree wide-angle and 12-meter voice pickup range, the MAXHUB V6 ViewPro Series ensures no voice is drowned out. AI noise reduction – based on beamforming technology and deep-learning models – filters out more than 300 noises, including typing, writing on the display, and air conditioning.

Without
noise cancellation

With
noise cancellation





Immersive Surround Sound

40W speakers

5 sound units

Side speaker

Unlike the traditional speaker-mesh structure, the MAXHUB V6 ViewPro Series sports a minimalist sound output slot, taking into account both aesthetics and sound effects.

Experience captivating, immersive audio, thanks to its 5 sound units, 40W speakers, side amplification and surround-sound effects. Even in a large video-conferencing room, the audio is powerful and crystal clear.

Picture-Perfect Performance

4K display
90% NTSC color gamut
 $\Delta E \leq 2$ high-color accuracy display
Anti-glare tempered glass
Zero parallax

With high-color gamut and ultra-HD 4K display, experience 1.07 billion colors in brilliant detail, promising a professional presentation every time. Zero-bonding technology effectively reduces air refraction and parallax for enhanced visual clarity.



Easy, Wireless Screen-Sharing

Wireless screen share Reverse touch control Split screen display

MAXHUB Share supports wireless screen sharing from up to 4 devices simultaneously with up to 4K resolution and low latency. The V6 ViewPro Series allows for greater flexibility during presentations, so you can turn pages and annotate directly on the touchscreen or manage the panel from your own device while seated.



Reverse touch control



Split screen display

Efficient Brainstorming

Nurture unrestrained, creative brainstorming while efficiently capturing your team's ideas using the whiteboard, which starts up with just one click. Equipped with 20 touch points, the device supports two people writing simultaneously and comes with a variety of pre-installed graphic templates. Smart Optical Character Recognition (OCR) technology allows you to easily convert handwritten text to print.





Works Seamlessly With PC and Mac

The V6 ViewPro Series' front-facing Type-C interface design allows you to cast from and manage your own devices through the display. You can also use its camera, microphone, and speakers directly from your laptop. A 1.8m Type-C cable is included in the package.

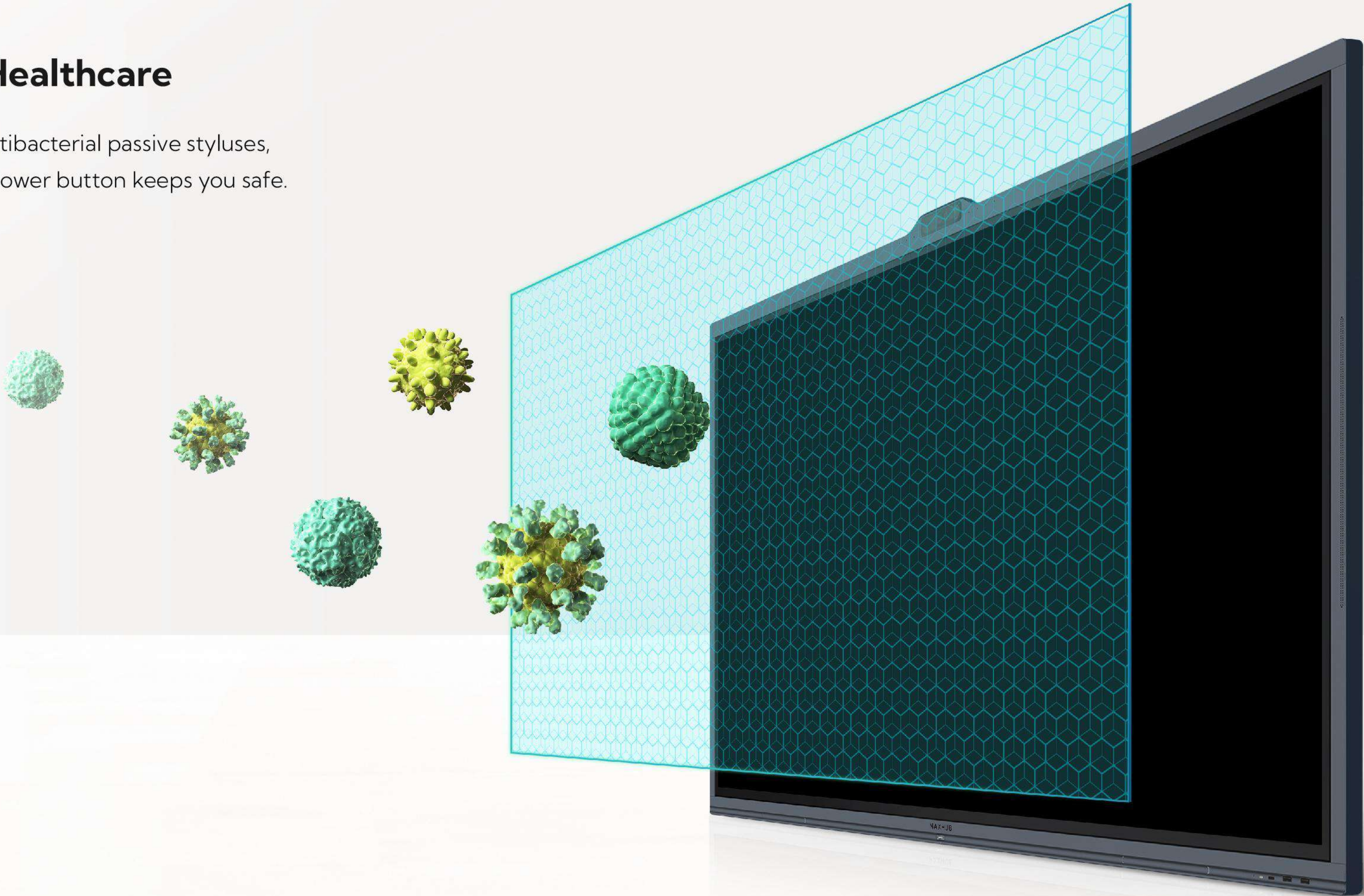
*Wired screen-sharing is made simple with a single Type-C cable.

*Control your devices through the display.

*BYOD (Bring Your Own Device)

Prioritizing Healthcare

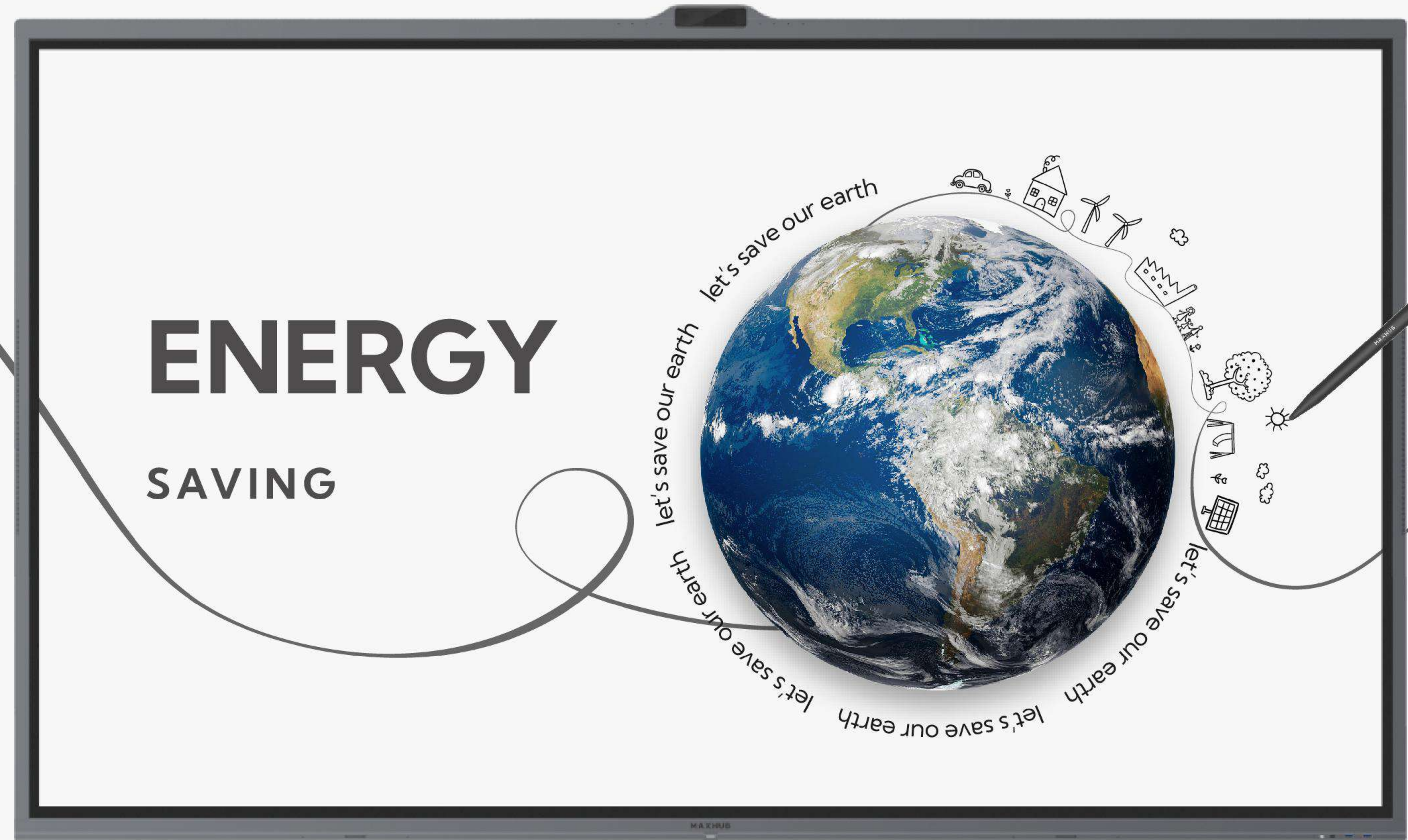
Antibacterial glass, antibacterial passive styluses, and an antibacterial power button keeps you safe.





Sustainability in Design

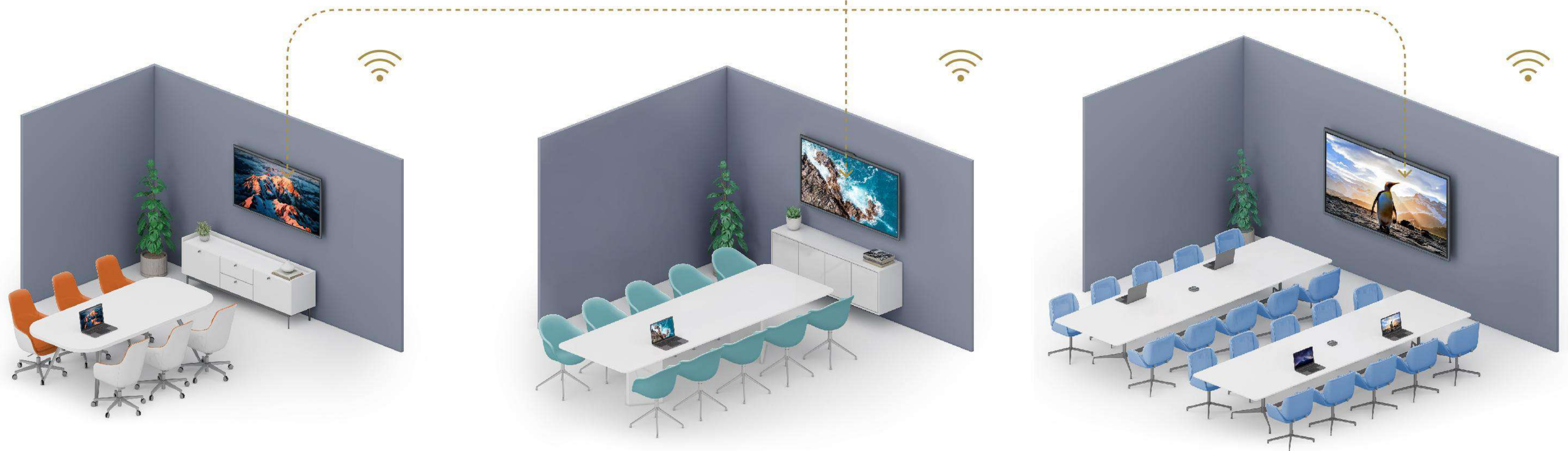
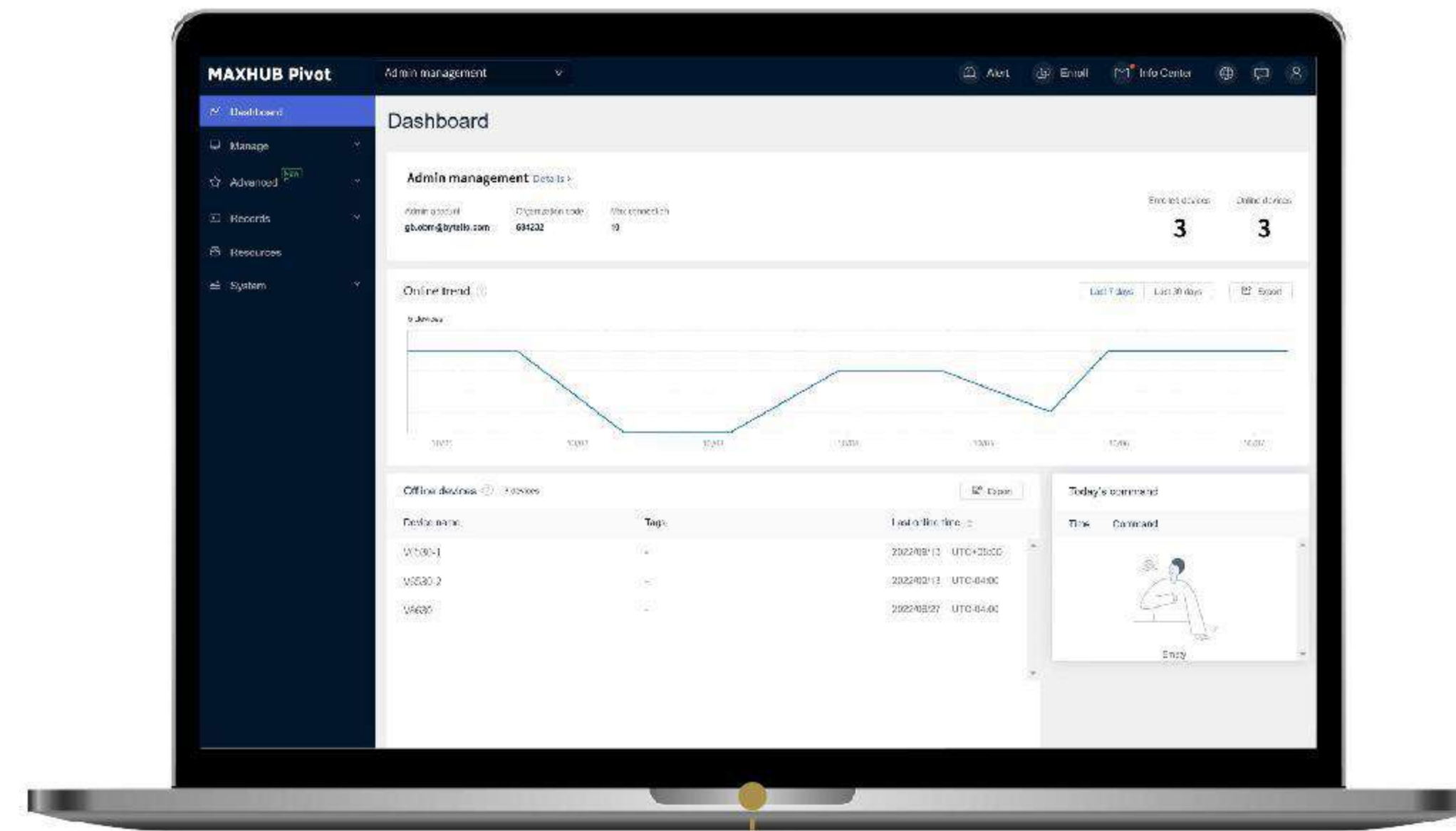
ENERGY STAR-certified, the MAXHUB V6 ViewPro Series helps you protect the environment and save costs.



Instant Device Access and Management

IT teams can easily access and manage your MAXHUB devices instantly through the cloud.

Remotely update device firmware, turn the screen on/off, install apps, deliver a message to all panels, and more using the pre-installed MAXHUB device-management app.



Easy Feature Access With MAXHUB OS 6.0

MAXHUB OS 6.0 provides easy access to whiteboarding, video conferencing apps, and wireless projection. Users can personalize the customizable homepage for a tailored user experience, and join a scheduled meeting with just one click thanks to the integrated calendar design.



Application Scenarios

- 01 Small huddle rooms
- 02 Medium-sized meeting rooms
- 03 Large boardrooms



Specification

Display

Model	V6530	V8630
Diagonal Size(inch)	65	86
Backlight	Direct-lit LED	Direct-lit LED
Panel Technology	VA	VA
Aspect Ratio	16 : 9	16 : 9
Resolution	3840 x 2160	3840 x 2160
Response Time	6.5ms	8ms
Refresh Rate	60Hz	60Hz
Brightness(typ)	350cd/m ²	350cd/m ²
Contrast Ratio	5000 : 1	4000 : 1
Viewing Angle	178°/178°	178°/178°
Color Gamut(typ)	90% NTSC	90% NTSC
Display Orientation	Landscape	Landscape
Operation Hour	16/7	16/7

Touch System

Touch	IR Touch	IR Touch
Max Touch Points Supported	20	20
Accuracy	±1mm	±1mm
Object Recognition Range	≥2mm	≥2mm
Glass	zero parallax, 3mm Angi-glare, antibacterial	zero parallax, 3mm Angi-glare, antibacterial
Supported Operating System(Touch Return)	Windows10/Windows8/ Windows7/WindowsXP/ Android/Linux/Mac OS X/ Chrome OS	Windows10/Windows8/ Windows7/WindowsXP/ Android/Linux/Mac OS X/ Chrome OS

Connectivity

Input	HDMI IN x 1, USB 2.0 x 1, USB 3.0 x 2, TOUCH 2.0 x 1, USB Type-C x 2	HDMI IN x 1, USB 2.0 x 1, USB 3.0 x 2, TOUCH 2.0 x 1
Audio	Audio out x 1	Audio out x 1
Control	RS232 x 1	RS232 x 1
OPS Slot	Yes, 3840 x 2160@60fps	Yes, 3840 x 2160@60fps

Camera&Audio&Microphone

Built-in Camera	Yes, Dual Camera 48MP+8MP	Yes, Dual Camera 48MP+8MP
Optical Zoom	Yes, 3x	Yes, 3x
Camera Features	Auto-Framing / Speaker-Tracking	Auto-Framing / Speaker-Tracking
Built-in Speakers	2.1 channel, 10W x2+20W	2.1 channel, 10W x2+20W
Microphone Array	8x far-field, Beam-forming mic Max 12m range	8x far-field, Beam-forming mic Max 12m range

Power

Power Supply	AC 100-240V, 50/60Hz	AC 100-240V, 50/60Hz
Max Power Consumption	350W	450W
Standby	≤0.5W	≤0.5W

Features

Ambient Light Sensor	Yes	Yes
Energy Star	Yes	Yes