



Connecting people with technology

IMPACT Series Gen 2

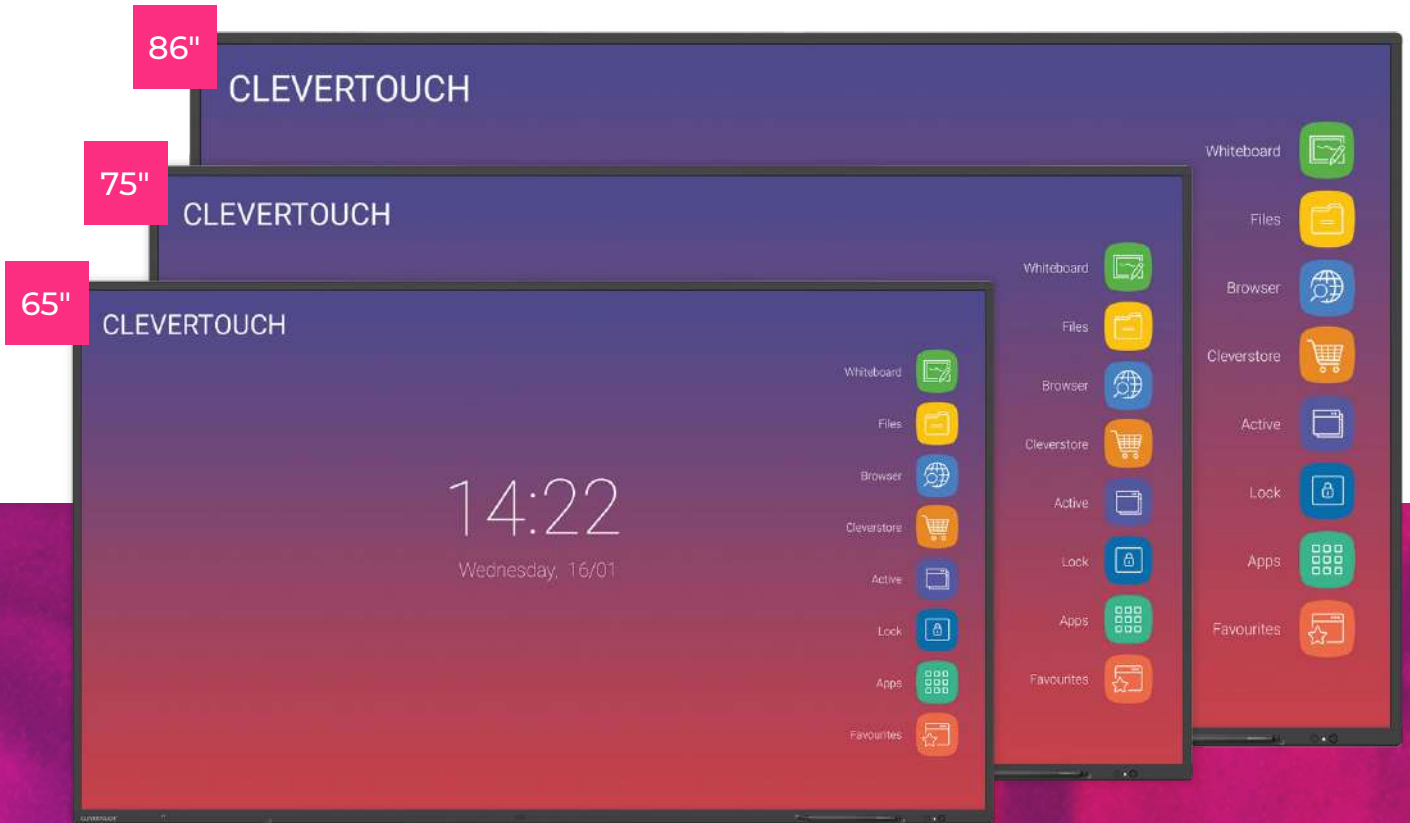
#clevertouch | info@clevertouch.com



Connecting people with technology

IMPACT Plus Gen 2

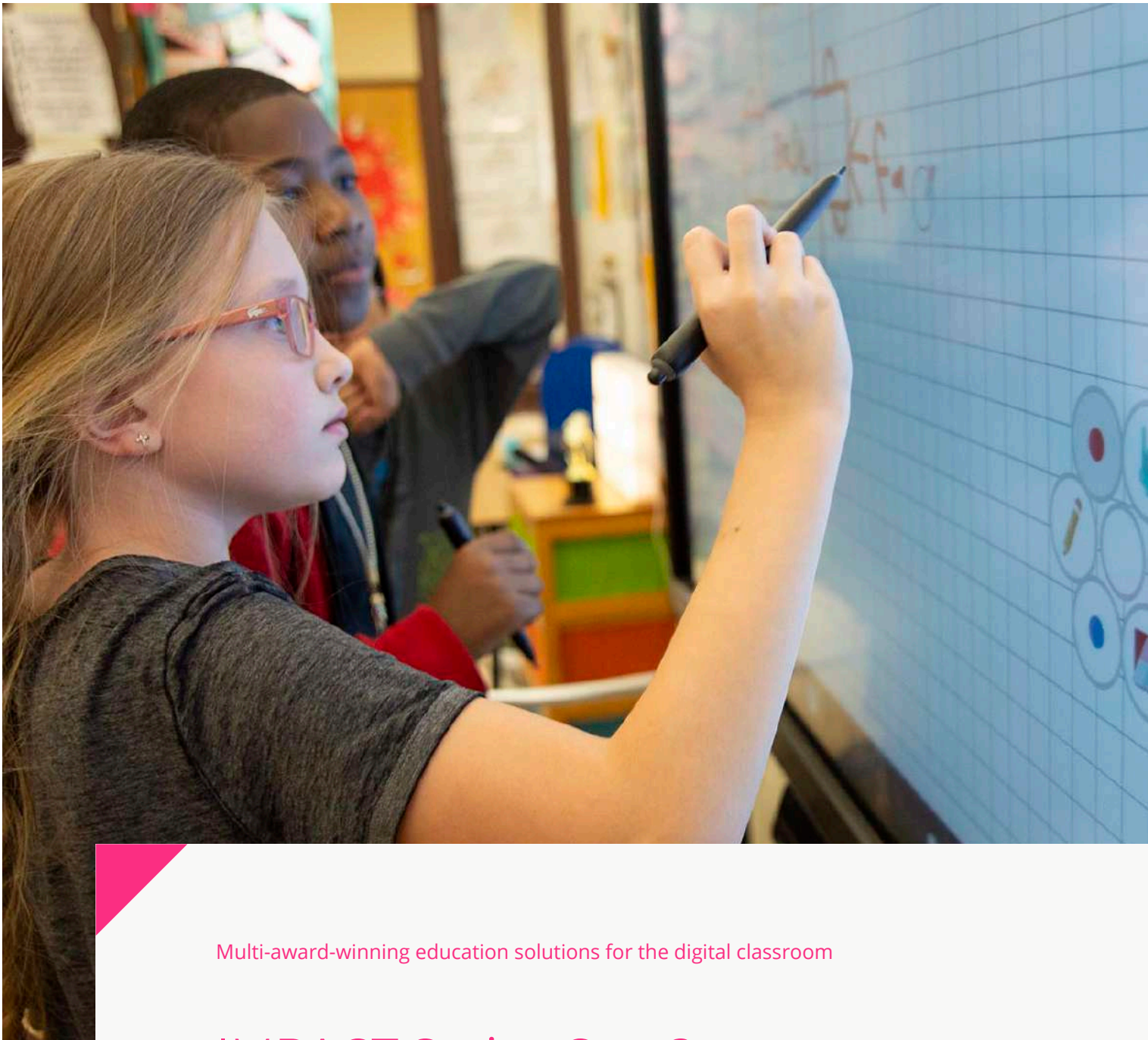
#clevertouch | info@clevertouch.com



Connecting people with technology

IMPACT Gen 2

#clevertouch | info@clevertouch.com



Multi-award-winning education solutions for the digital classroom

IMPACT Series Gen 2

Interactive large format display designed for the blended learning environment.



Innovation, design,
high-quality &
functionality
Plus X Award
2020 - Winner



Interactive
Display Technology
of the Year
AV Awards
2019 - Winner



Installation
Best of Show
Award at ISE
Best of Show
2020 - Installation Winner



Best of Show
Tech & Learning
Best of Show InfoComm
2020 - Winner



Best of Show
Installation
Best of Show InfoComm
2020 - Winner



Collaboration
Innovation
of the Year
AV News
2020 - Winner

Key Features

Compatible with Google Workspace and Microsoft 365

You can prepare resources anywhere at any time

Designed for hybrid learning

Students can participate in and out of the classroom

Free apps and software

Cleverstore, LYNX Whiteboard

Screen mirroring for 50 devices

With 6 mobile devices shown on your IMPACT Plus - Clevershare

Full screen digital signage capabilities

ClevertouchLive App

Customise your home screen

With your school's colours, logos, photos and preferred apps and software - ClevertouchLive

Control and troubleshoot remotely

Via MDM Remote Management

Elevated connectivity

Latest generation USB-C for charging and ethernet, plus all other connectivity ports for connecting a range of devices.



Save time lesson planning with subscription-free software



Send messages, alerts and media to all of your Clevertouch screens remotely.



Screen mirroring with built-in teacher controls



High Precision Technology



Apps for Blended Learning



Making integration and installation easier

IMPACT Plus Gen 2 Available in a range of sizes

55" | 65" | 75" | 86"

Super Wide Sound

45W Max Power for room-filling sound.

4K

True 4K resolution and sharper user experience throughout.

Cloud Accounts

Sync with your Cloud accounts so that you can work anywhere at any time.

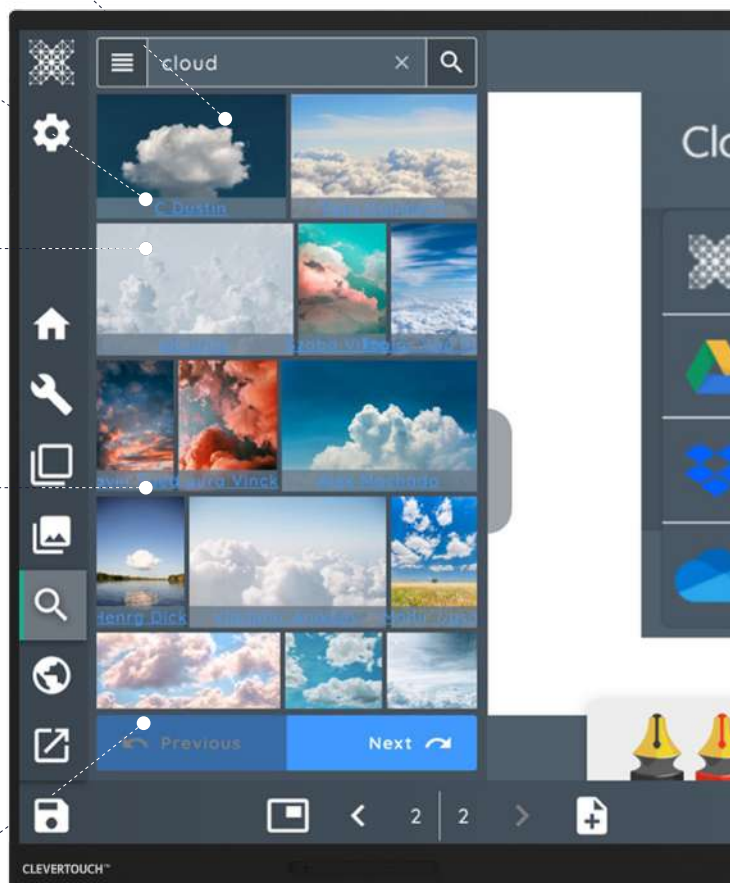
 Google Drive  OneDrive

High Precision Technology

Our patented Super Glide Touch technology offers the most fluid writing experience on a touchscreen. It's as smooth as writing on a whiteboard - with no lag. With the ability to differentiate between palm-erase, fingertouch, and stylus-writing, there's no need to change settings mid-flow.

Security Matters

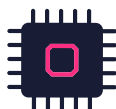
We know how important it is to be secure, so we've got lots of options for you to keep control of your device. Clevertouch can run on-or-off the network. Settings, apps and Android can all be disabled. Data can be wiped at the end of a session and the screen can be locked with a secure passcode.



What's



Zero bonding - no air gap gives greater accuracy, improved performance and vibrant imagery



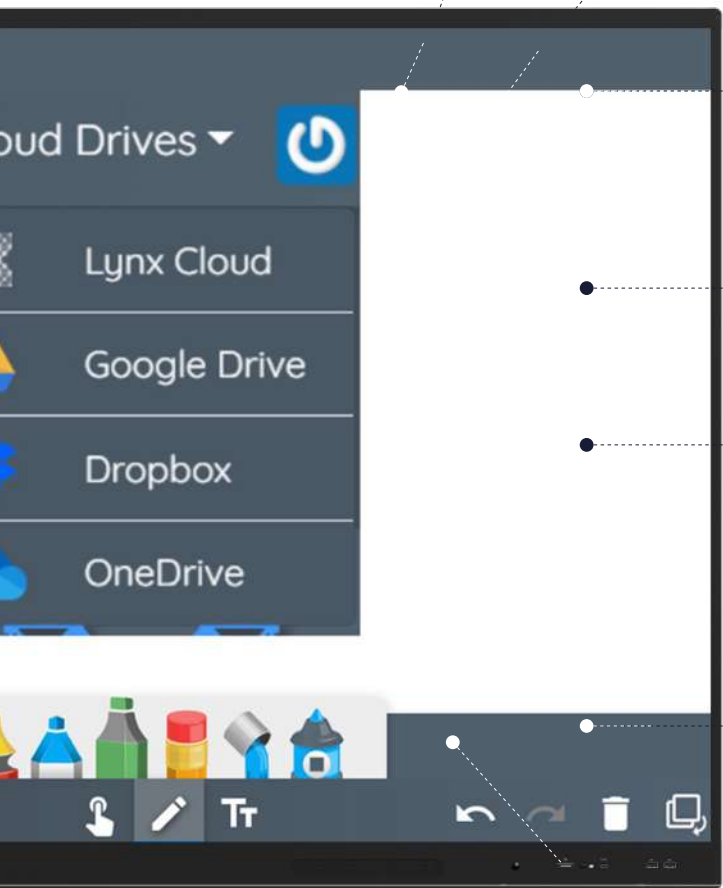
Android 9 4K Chipset - 6GB RAM / 64GB ROM




Front-mounted latest-generation USB-C - allows switching between any device



Front-facing speakers and subwoofer for clearer, more powerful quality audio



- **New super cool stylus**
Comfort stylus to aid teaching



- **Microphone**
Built-in line array microphone.

- **Cleverstore**
Access hundreds of free teaching apps to make lessons more engaging.

- **Comprehensive Warranty**
No ongoing subscription charges.

- **Infinity Whiteboarding**
Never run out of space with our infinite canvas. With numeracy tools, handwriting-to-text recognition, and the ability to insert images and shapes, all of which can be saved, printed or shared to student devices.

- **Connectivity**
Huge connectivity including the latest USB-C port.

- **Environmentally Friendly Motion Detection**
Equipped with Proximity Sensors your Clevertouch will power off when no one is detected in the room.

New?



Upgraded 6 array microphone



Ambient light sensor



Front-mounted power button



Front-mounted USB-A port



Intelligent Camera

Upgrade your IMPACT Plus Gen 2 with an Intelligent Camera

- Slots onto the bottom of your IMPACT Plus Gen 2
- 4K camera gives crystal clear vibrant images and video, capturing the entire room
- Swivel pulley allows you to nudge the pitch angle of your lens
- Security cover included



Optional Extra

Sign in with ease

The intelligent camera contains a built-in NFC sensor and a RFID sensor.

Use either an NFC card to sign-in in seconds, giving you access to your favorite apps, your Cloud accounts, and your preferred settings.



Keep track of your environment

For the comfort and safety of your teams, our sensors keep track of air quality, light, temperature and humidity.

Press a button on your IMPACT Plus Gen 2 to instantly see your environmental data.

Coming Soon

View the data of all of your screens via ClevertouchLive. If the environment is not ideal, send an automated message back to your IMPACT Plus Gen 2 with an instruction for the people in the room.

Use the data to better plan for your heating and air conditioning, and save money on unnecessary heating measures. Sync your account with your RFID fob.

IMPACT Gen 2 Available in a range of sizes

65" | 75" | 86"

Audio

2 x 15W speakers for crystal clear sound quality from anywhere in the room.

Remote Management

View, control, update and troubleshoot remotely. Your IT office can work on your Clevertouch screen without needing to come to the classroom. You'll always have the latest versions of apps and software without needing to install any files when you should be teaching.

Cloud Accounts

Sync with your Cloud accounts so that you can work anywhere at any time.

 Google Drive  OneDrive

High Precision Technology

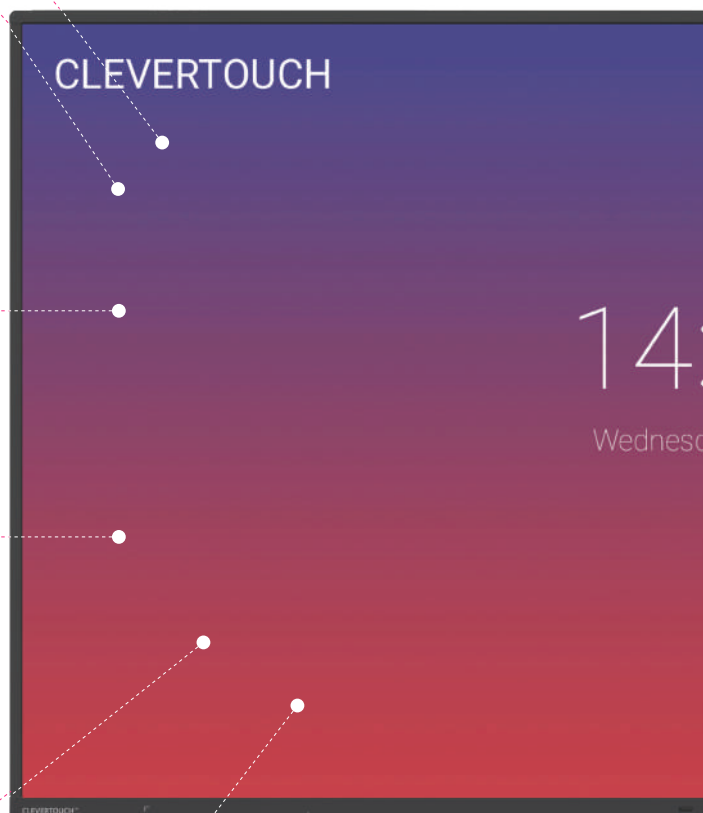
Our patented Super Glide Touch technology offers the most fluid writing experience on a touchscreen. It's as smooth as writing on a whiteboard – with no lag. With the ability to differentiate between palm-erase, fingertouch, and stylus-writing, there's no need to change settings mid-flow.

LUX 8.0

Easy to use interface. Simple, quick, intuitive apps and gestures designed to make everyday tasks seamless.

Clevershare

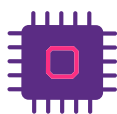
Screen mirror with images, video and audio.



What's New?



Built-in array microphone - all lessons can be recorded with sound



3GB RAM
32GB ROM



Latest generation USB-C with charging and hardware optimisation



● **Cleverstore**

Access hundreds of free teaching apps to make lessons more engaging.

● **Comprehensive Warranty**

No ongoing subscription charges.

● **Infinity Whiteboarding**

Never run out of space with our infinite canvas. With numeracy tools, handwriting-to-text recognition, and the ability to insert images and shapes, all of which can be saved, printed or shared to student devices.

● **Connectivity**

Huge connectivity including one of the latest USB-C ports. Allows single cable connection for audio, video and touch.

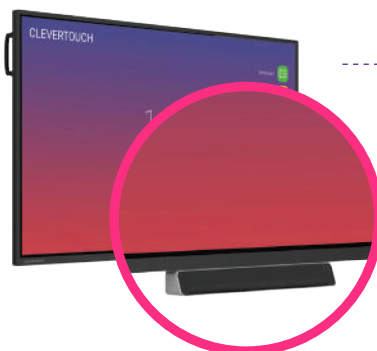
● **LYNX Whiteboard**

Whiteboarding made easy with a huge selection of pen & art tools to choose from.

Extras



With the NFC pen tray teachers can be assigned with a fob card that carries all their settings and accounts, so there is no need for a lengthy log-in process





Quick Launch Menu for instant teaching tools

Your most commonly used apps are available with one touch and are easily accessible via the Quick Launch Menu.



The Clevershare App is free to download and compatible with Android, Windows, iOS and Chrome devices. Up to 50 devices can connect with the Clevertouch screen and share content – images, video, and audio. The presenter has full control over what is shared, and can show up to 4 device screens simultaneously, increasing student collaboration and participation within every lesson. Now includes touch-back.



Make notes, diagrams or images, add and scroll through multiple pages, insert an image or change the background colour. Now includes handwriting and formula recognition.



Double click on files to open them, as well as easily copy, cut and paste, so it's just like using a PC. Personal Cloud Storage integration.



Explore the internet without needing a computer, using the IMPACT™, Chrome and Chromium browsers.



Cleverstore contains hundreds of apps in all subjects and a range of languages, including literacy, STEAM and languages. Each app is tested by our team, to make sure no adverts, in app purchases, or inappropriate content gets through. We've partnered with the most popular educational app developers to give you apps that you can really make use of in the classroom.



Easily go back to recently used apps using the Active button with split-screen mode.



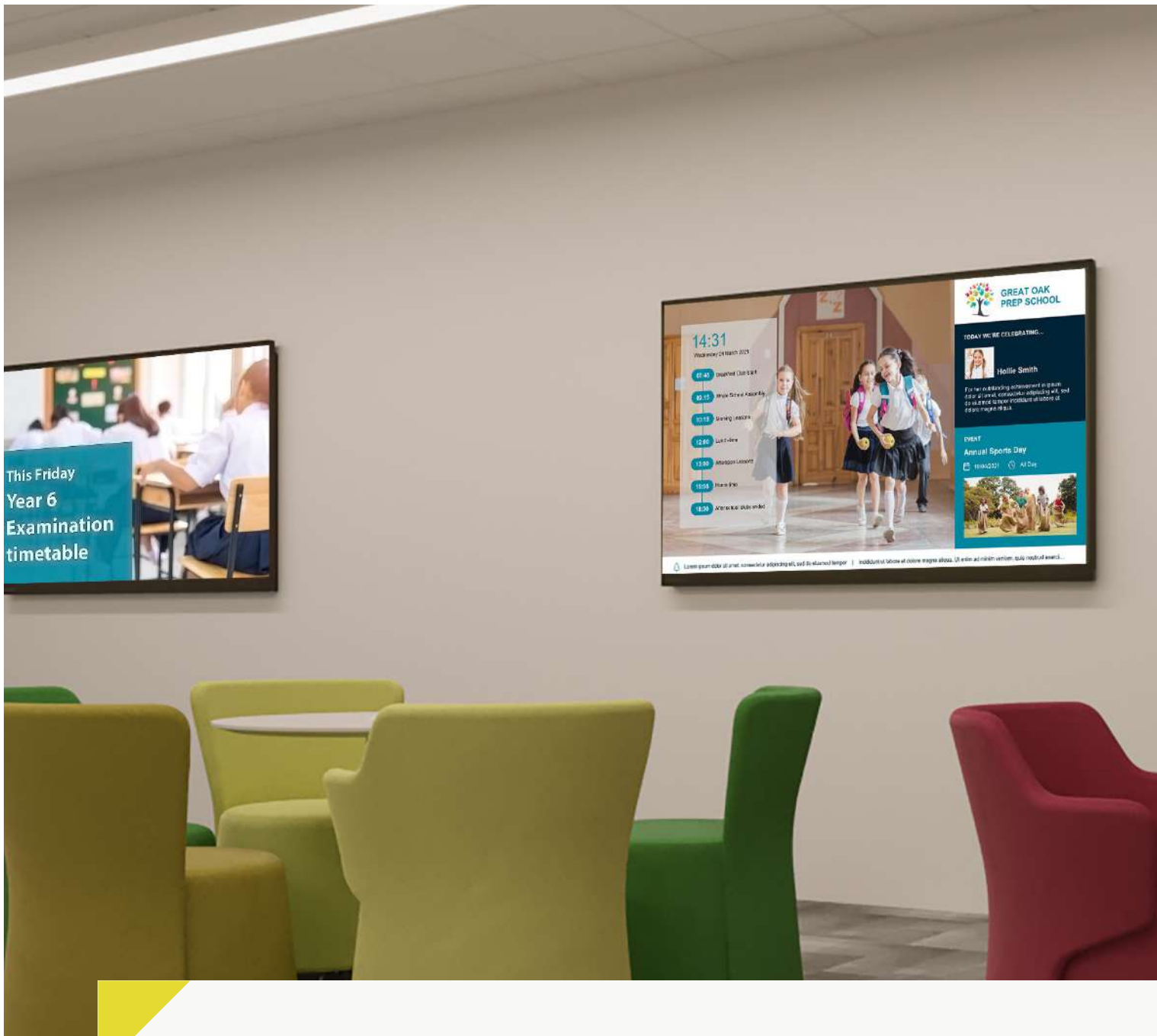
Protect your Clevertouch with a password by using Lock.



All of your integrated and Cleverstore apps can be found here.



All your favourite apps in one place, including Settings.



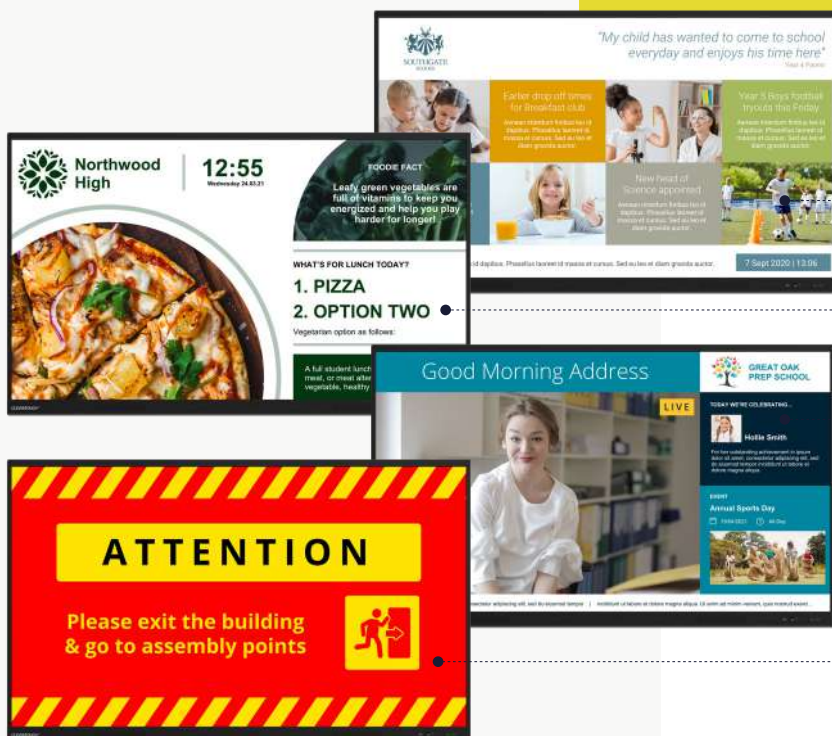
Exclusive to Clevertouch

ClevertouchLive App: Messaging

With ClevertouchLive App your IMPACT isn't just a screen for teaching or presenting, it's also a communications tool. Use it to broadcast messages, alerts and important information to students, staff and visitors.



Flexible Messaging Solutions



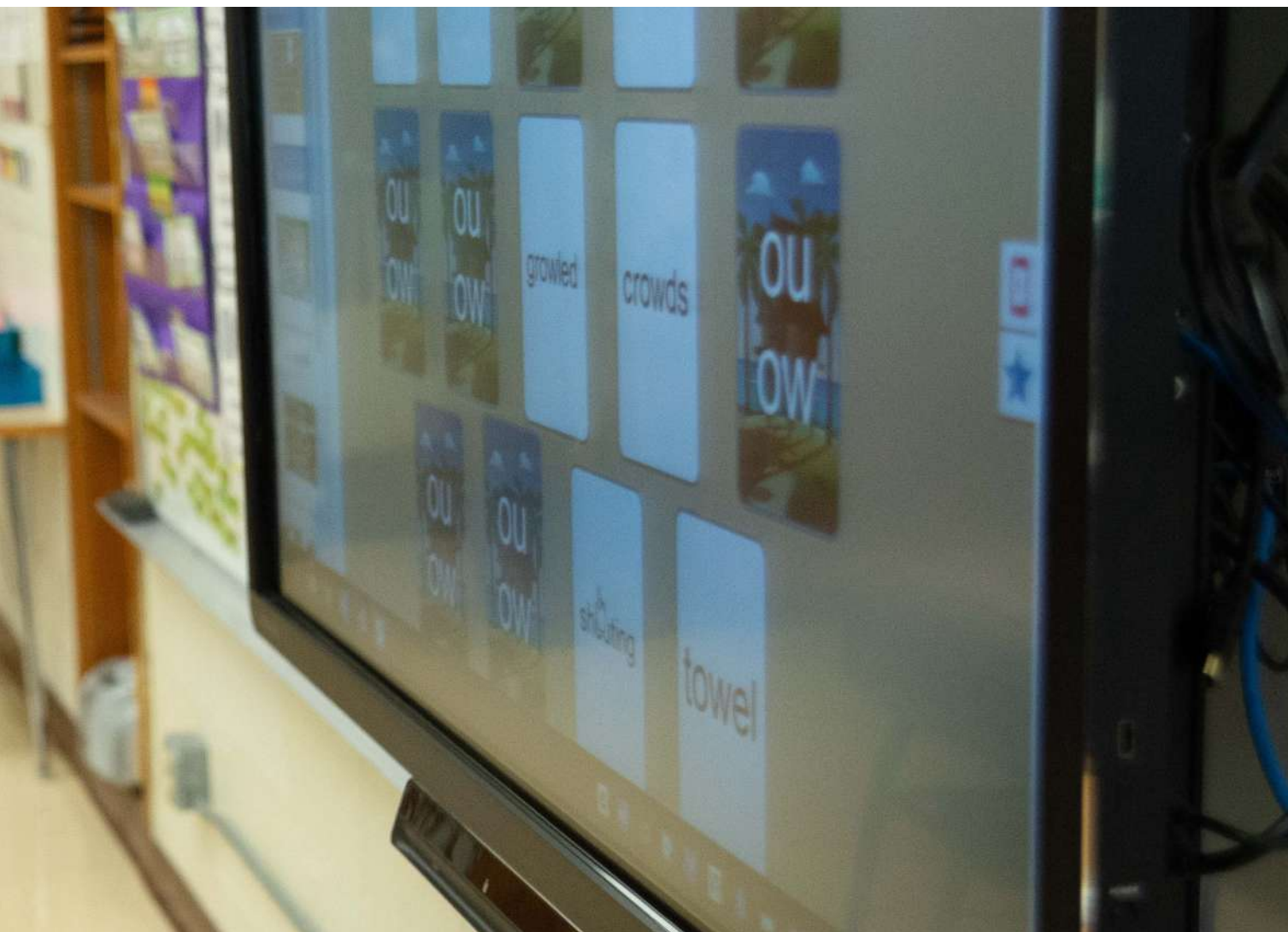
- Daily news and activities
- Weekly lunch menu
- Live video messages from the school office
- Emergency announcements and fire drills



Dynamic and integrated

ClevertouchLive: Home Screen

Customise your home screen so it's unique to your school or district. With the ClevertouchLive App, you can group screens so they are representative of your messaging and create user and group profiles.



Personalise your launcher page

- Group by subject, schools, age group, campus, district and more - it's totally flexible
- Show the apps you want. Either from the Cleverstore, or add your own
- Lockdown settings so teachers have to stay within your guidelines
- Add your school logo, colours and background images
- Custom clocks

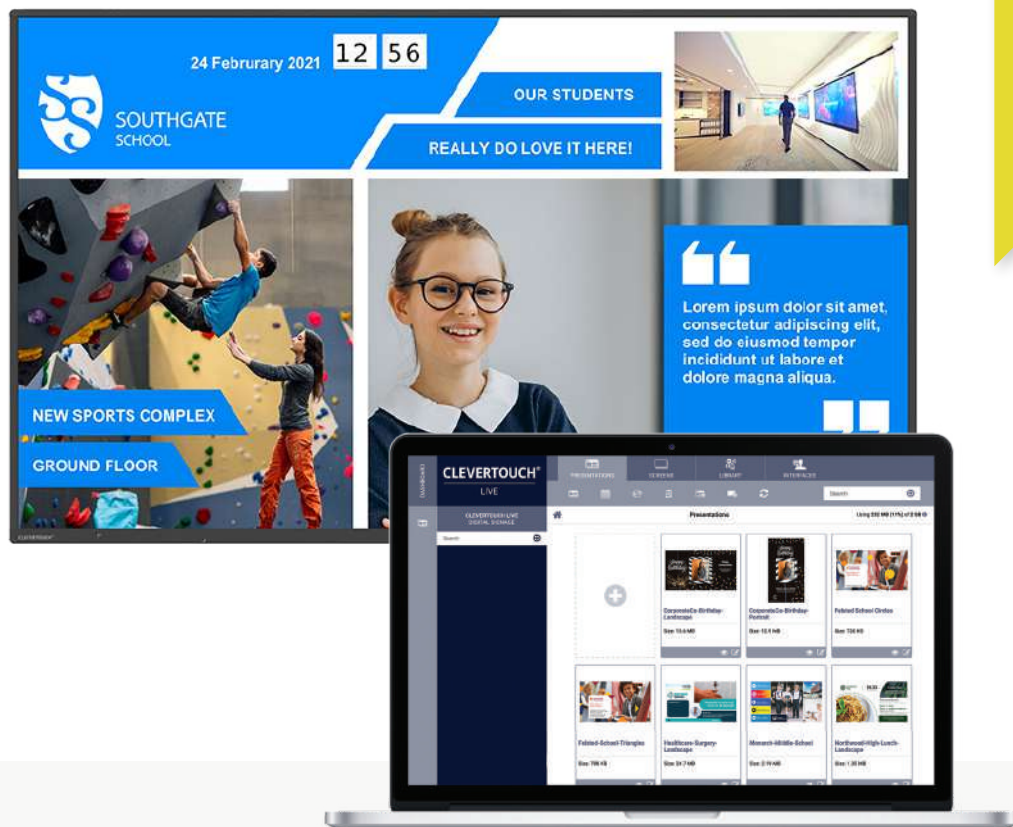
It's simple!

- 1** Go to ClevertouchLive
- 2** Sync your IMPACT screen
- 3** Choose your UI layout





Create teacher or group profiles
Log into any connected screen in your district and get your apps, home screen, settings and more.



Dynamic and integrated

ClevertouchLive

ClevertouchLive is the Content Management System Platform (CMSP) for all Clevertouch Technologies innovations.

Personalise your launcher page

- Display digital signage messaging when it's not in use.
- Add apps from the Cleverstore or upload your own apk files – send to all your interactive displays without needing to manually install them on individual screens.
- Send alerts and announcements to your audience.
- Weather warnings, stranger alerts, fire alarms.
- Call staff/students to other locations.



Increase Student Engagement

Cleverstore

It's easy to hold students' attention when there's something new on the screen. We've hand-picked apps from educational app developers that support Common Core State Standards in the US and the National Curriculum in the UK.

Apps for everyone

With apps for all ages and in most subjects, there are loads to choose from to help support your lessons. From Coding to Math, Literacy, and Science, as well as games and stories, Cleverstore has everything you could need.

Dual language

Not only are most of our apps available in a variety of languages, but some also support dual language, allowing you to teach languages such as French, Spanish, and German as you go along.

A store you can trust

Our App Team checks every app that's submitted to the store so there is no inappropriate content. We want to enable teachers to download apps as lesson resources – so all apps are suitable for the classroom.



Clevershare

Collaborate with ease - connect up to 50 devices, including phones, tablets and laptops. Screen mirror with images, video and audio.

With touch-back for two-way control, the presenter has full control over what is shared and can show 6 screens simultaneously, increasing collaboration and participation within every session.

Share content with any device

Up to 50 devices can connect with the Clevertouch screen and share content – images, video, and audio. Now with touch-back for two-way control.

The presenter has full control over what is shared and can show up to 6 device screens simultaneously, increasing collaboration and participation within every session.

Mastering Mode

This optional mode will allow you to manually accept or reject from the Clevertouch screen when someone attempts to connect via Clevershare.

Chromecast and Airplay

There is an optional button you can swipe in the settings that will allow you to natively connect your device this way.

Clevershare App

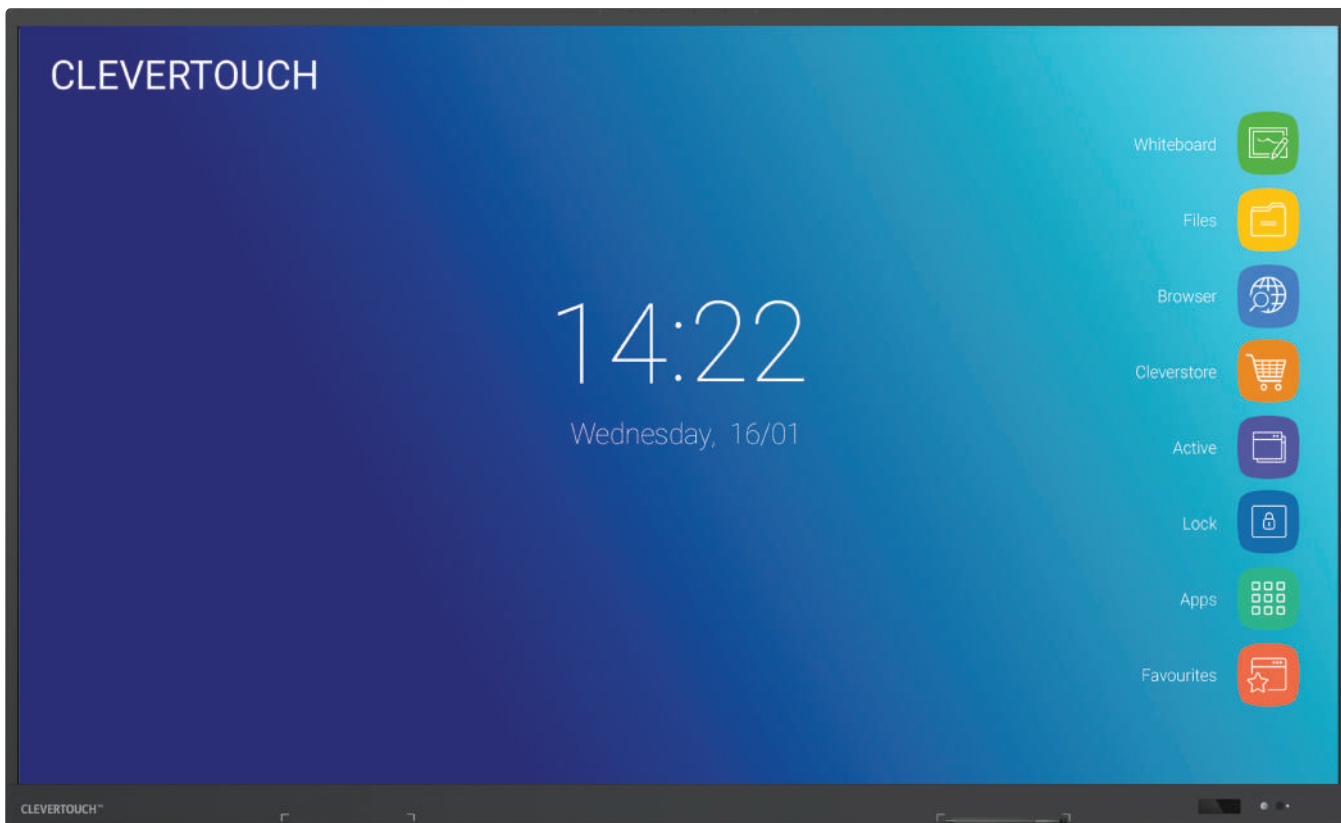
Any device can download the Clevershare App and connect instantly by typing in the code on the Clevertouch screen. Clevershare App is free to download and compatible with Android, Windows, iOS, and Chrome devices.

Clevershare Dongle (optional extra)

Use the USB-C Clevershare dongle to share content. No need to download any app or driver, so ideal for companies that do not allow downloads to devices.

How to connect

You can connect via the Clevershare App if your device is on the same Network as the Clevertouch. Use Advanced Mode for additional encryption and dual sub-networks. There is a Hotspot option if you are unable to use the network.



Optional Extra

Clevershare Dongle

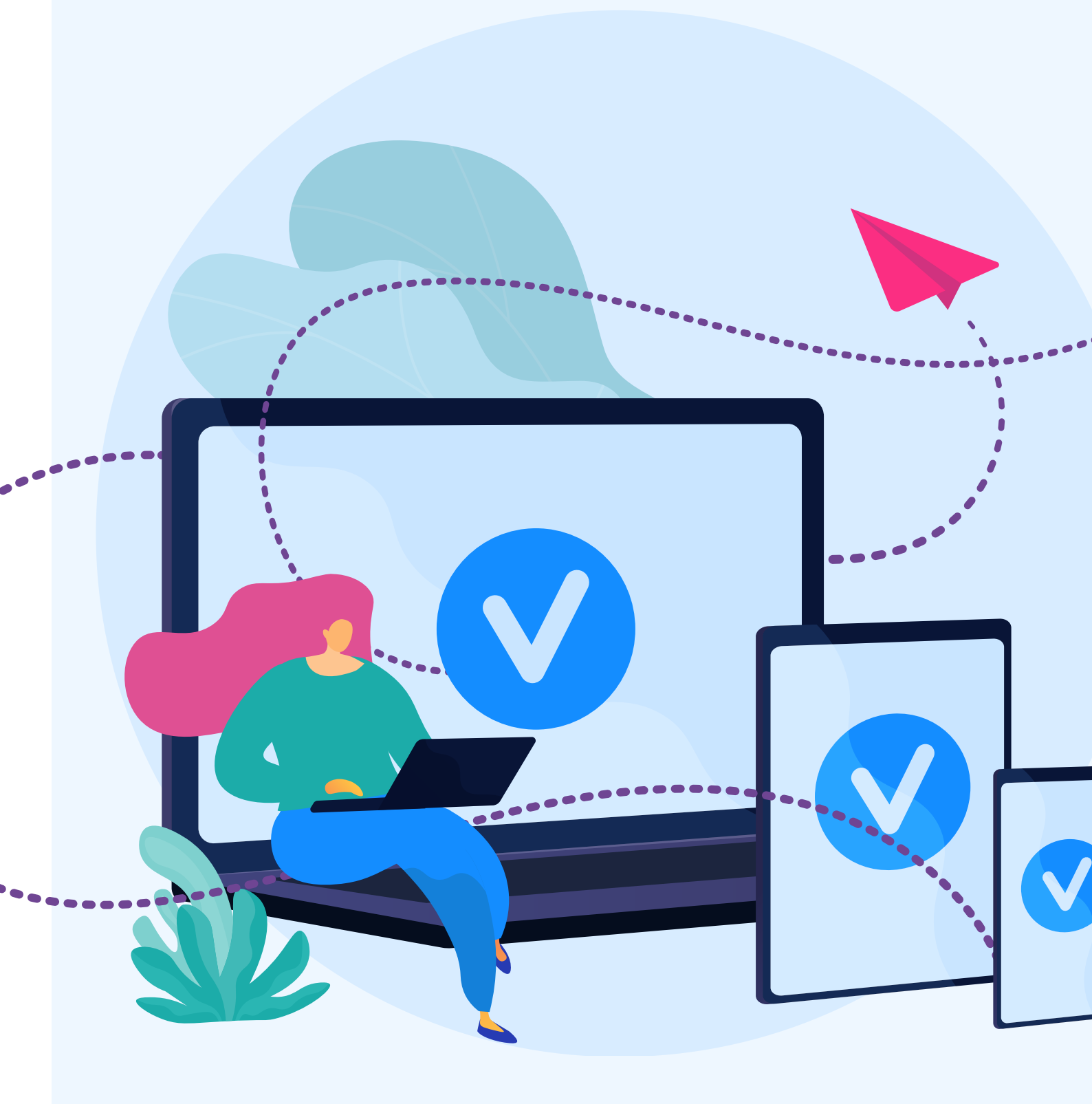
- USB-C connection
- Compatible with IMPACT Plus
- Works in conjunction with the Clevershare App



Clevershare App

- Works on any device
- Free to download
- Compatible with Android, Windows, iOS & Chrome Devices

With AirServer you can mirror content from your personal device to the Clevertouch panel without needing to download an app.



Key Features

AirPlay

Used by macOS, iOS and iPadOS devices.

AirServer has support for AirPlay mirroring, media as well as audio-only streams.

Bluetooth discovery.

Support for PIN, password, and on-screen prompt for incoming connections.



Google Cast

Used by Android and Chrome OS devices and is included in Chrome and Edge browsers.

AirServer has support for both Google Cast mirroring and media (casting from apps).

Casting from apps is also available from iOS and iPadOS. DRM protected content is supported if the host device has DRM support.

Google Cast has no PIN support, but AirServer has a prompt option to accept connections.



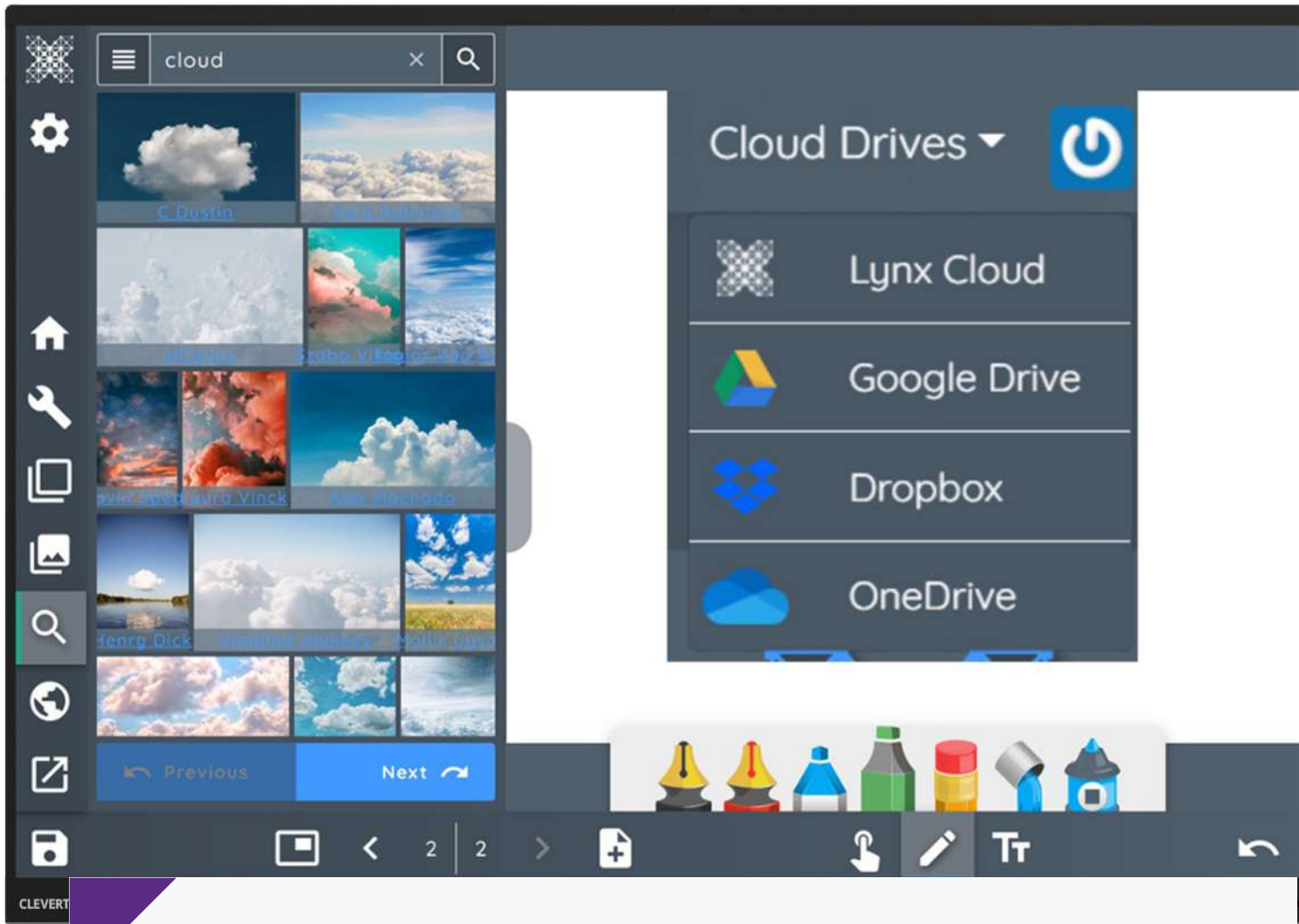
Miracast

Used by Windows 10 devices as well as some Android devices (Samsung, LG, Huawei and more).

AirServer has support for UIBC (touchback) and hardware cursor that transmits the mouse cursor separately to reduce perceived latency.

Support for PIN code and on-screen prompt for incoming connections.





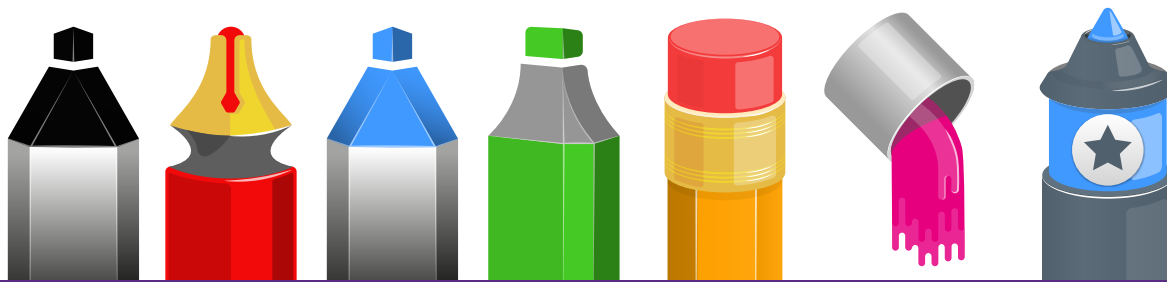
Whiteboarding made easy with a huge selection of pen & art tools to choose from

LYNX Whiteboard

The most dynamic, intuitive user experience of any whiteboard – completely redesigned for a touchscreen, with drag and drop, pinch to zoom, and easy swipe menus.



LYNX Whiteboard has now partnered with PhET to give you over 80 FREE STEM activities to use in your classroom or set as homework.



Captivating Lessons

Natural handwriting

Our new pen type allows users to have a more natural feel to their writing. Pressure and velocity will help to decide the thickness of the line as the user writes – like a real pen.

Multi-Purpose

Split the screen so that you can look online while your lesson is open, and drag content across.

Dual Pen

Two users can choose different pens, or different tools, and use them simultaneously, providing a more natural feel.

Increase student Engagement

Search videos from YouTube, images from Unsplash, panoramic images – all without leaving your app. Safe Search enabled, ensuring content is suitable for children.

Get Creative

With dozens of teaching tools at your fingertips.

Fun, Shareable Activities

Create your own activities with customizable content. Activities will automatically be saved to your LYNX Cloud, so that you can share them with colleagues.

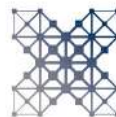
Collaborate with ease

Students can scan a QR code with their personal device and either join the activity during the lesson, or save it to do at home.

Quickly switch formats

Convert files from Office formats into LYNX files, ready to be used within LYNX. Word, Excel and PDF files can easily be converted. Drag interactive whiteboard or Smart Notebook files in bulk and they will automatically convert into a LYNX file.





Cloud access for distant learning with LYNX Whiteboard

Hundreds of tools to increase student engagement in a blended learning environment.

Access the cloud & Log in from anywhere

Create lessons on the go, at home, or in another classroom, on any device.

Your school can set up a LYNX Cloud account, so content and resources can be shared.

Great for distance learning

Set work, deploy and give students their own log-ins.

Download & Upload

Log into any Clevertouch and download your LYNX files, great if you aren't in your usual classroom.

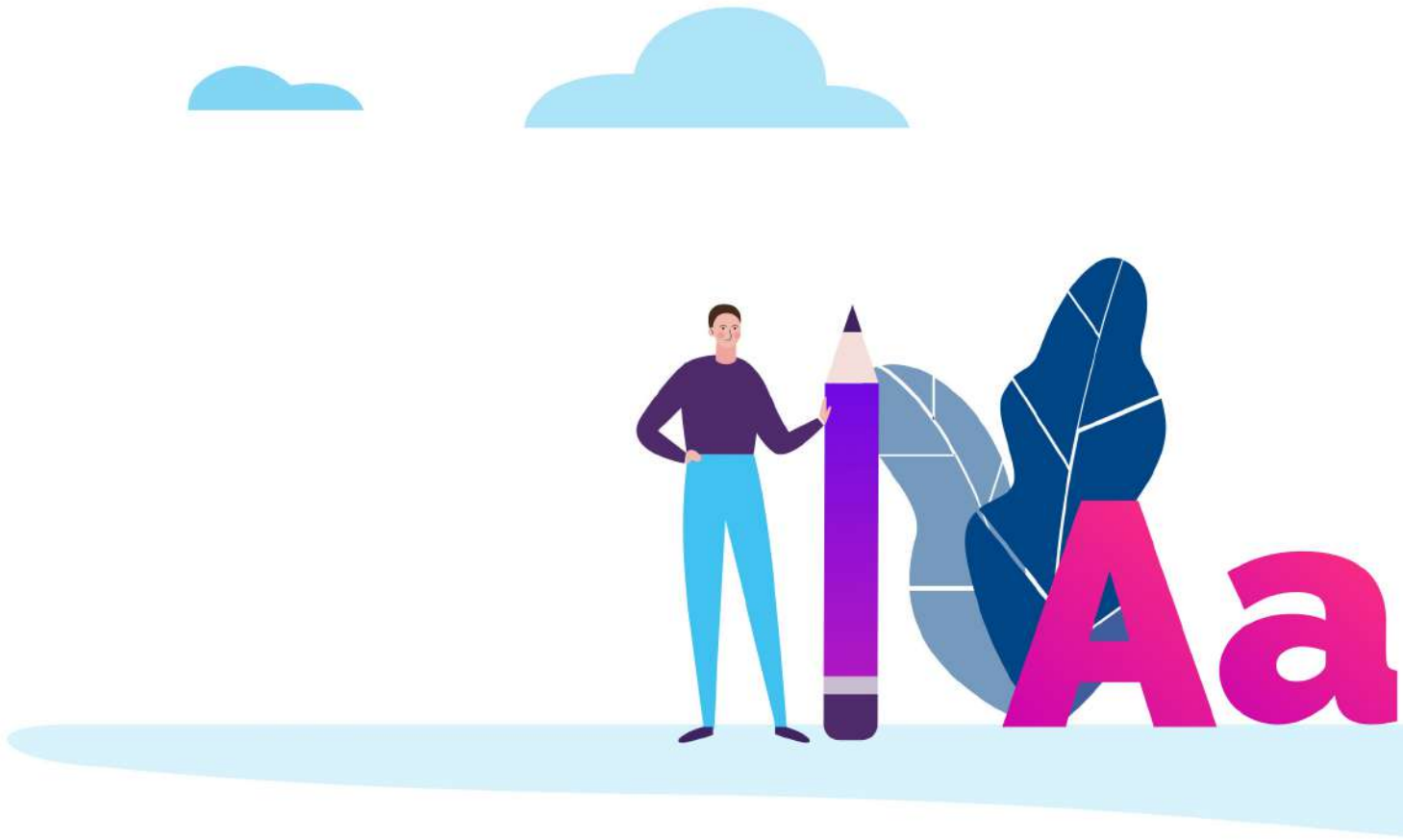
Set Homework

Set homework activities for your students

Sync with other cloud-based drives

Get content from Dropbox, OneDrive, LYNX Cloud or Google Drive and input it directly into your lessons





Snowflake

Educational software that brings interactivity to your school and boosts classroom engagement by using Smarter Human Interaction. Snowflake enables teachers and students to tell engaging, interactive stories that align closely with the curriculum, it provides a safe community for online and small group collaboration, and it allows simultaneous personalised instruction making curriculum relevant to students' lives.



Zones

Snowflake is the only educational technology software allowing you to divide your touchscreen into independent, personalised zones. Snowflake transforms the classroom into a fun, motivating, and engaging active learning environment.

Personalised Learning

Together with its online version, Snowflake creates an active learning system well adapted to personalised learning. It enables educators to choose the teaching resources that work best for their students and display different content and activities in a different Zone.

Providing the right scaffolds

Every age and subject has different needs; Snowflake offers a unique configurator that allows the schools' IT Administrator to select the appropriate scaffolds of both tools and content their teachers need.



Stage Lite

Stage is a hassle-free unified communications solution designed for both on-site and distributed teams. Its clean interface and intuitive functionalities constitute a tool that makes collaboration easy and work more efficient.



Clevertouch have partnered with NUITEQ to bring you a special version of STAGE.



NUITEQ[®]
STAGE Lite

Collaborative Whiteboard for hybrid working and learning

Work together in real-time to annotate documents and create whiteboards.

Chat

There's an inbuilt text-chat feature.

Import Lessons

You can import lessons from Snowflake and work on them together

Browser Based

Anyone can join, as long as they have the meeting code - there's no need to download any software

No Download Required!



Get started today in 3 simple steps:

- 1** Visit [Stg.Live](#)
- 2** Enter your code
- 3** Start Collaborating



Take Control

Remote Management

IT departments & administrators can take control, without needing to leave their office. Control multiple Clevertouch devices by linking your entire fleet of Clevertouch screens to your Remote Management MDM account, so that you can control them from anywhere.



Update or remove apps

With the functionality to add .apk files to some or all of your Clevertouch displays, your organisation can always have the latest apps available to use.

Over-The-Air updates

Our OTA updates are just one click away to get the latest firmware on your screen. We will never charge you for firmware updates.

View status information

IT managers can troubleshoot without needing to leave their office. Look up individual Clevertouch screens, view the display in realtime, edit settings, or restart devices remotely.

Group and tag

If you have a group of screens being used by a certain department, you can deploy the same apps and settings, so that there is a standardized experience for everyone in that department.



IMPACT Series Gen 2

Quick Comparison Spec

| | IMPACT Gen 2 | IMPACT Plus Gen 2 |
|---|------------------------|--------------------------------|
| Sizes | 65" 4K, 75" 4K, 86" 4K | 55" 4K, 65" 4K, 75" 4K, 86" 4K |
| NEW RAM | 3GB RAM | 6GB RAM |
| NEW Internal Storage | 32G | 64GB |
| 4K UHD (3840x2160 @60Hz) | Yes | Yes |
| Tempered Glass - Mohs Level 7 | Yes | Yes |
| High Precision Technology | Yes | Yes |
| 20 Continuous Touch Points | Yes | Yes |
| Finger, Gesture & Pen | Yes | Yes |
| Simultaneous Writing | Yes | Yes |
| LYNX Whiteboard, Cleverstore | Yes | Yes |
| Ink-In Tools Via LYNX | Yes | Yes |
| Dual Recognition Stylus | Yes | Yes |
| Palm Rejection | Yes | Yes |
| Annotate Over Any Source | Yes | Yes |
| Classroom Essential Apps: Includes Whiteboard, Annotate, Timer, Media Players, Browser, Pdf Reader, Screen Record, Spinner, Voting, Maths Tools | Yes | Yes |
| Compatible With Windows 7 To 10, Windows XP, Linux, Mac, Android, Chrome | Yes | Yes |
| NEW Android 9 4K Chipset | No | Yes |
| NEW LUX 9 Powered By Android 9 | No | Yes |
| 2 X 15 Watt Speakers | Yes | Yes |
| NEW Front-Facing Speakers | No | Yes |
| Super Wide Sound Subwoofer (45w) | No | Yes |
| NEW 6 Array Microphone | Yes | Yes |
| OPS Intel PC Slot | Yes | Yes |
| NEW Zero Bonding | Gen 1 | Gen 2 |
| Front-mounted USB-A | No | Yes |
| NEW 1x USB-C with video, audio, touch, power and hardware optimization - side-mounted | Yes | Yes |
| NEW 1x USB-C with video, audio, touch, power and hardware optimization and ethernet - front-mounted | No | Yes |
| NFC Sensor (via optional extra hardware) | Yes | Yes |
| NEW Environmental Sensors (via optional Intelligent Camera) | No | Yes |
| NEW 4K Camera with swivel view (via optional Intelligent Camera) | No | Yes |
| Motion Sensor | No | Yes |
| NEW Ambient light sensor | No | Yes |
| Clevershare Hardware Integrated | Yes | Yes |
| True 4K User Interface | No | Yes |
| Super Cool Stylus | No | Yes |



Why Choose Clevertouch Technologies?

- ✓ Trusted Brand
- ✓ No ongoing cost
- ✓ Free training
- ✓ Part of a Digital Ecosystem of products – control them all from one online platform
- ✓ Supports Remote Learning
- ✓ Dedicated Support Team
- ✓ Free updates and new features

Display

| | |
|------------------------|---|
| Diagonal Size | 55" 4K, 65" 4K, 75" 4K, 86" 4K |
| Screen Type | TFT LCD - Direct LED Backlight |
| Aspect Ratio | 16:9 |
| Display Colours | 1.07 Billion (10bit) |
| Resolution | 4K UHD (3840 x 2160) |
| Response Time | 5ms |
| Refresh Rate | 60Hz |
| LCD Viewing Angle | 178° |
| Brightness | 420 cd/m2 |
| Contrast Ratio | 55" 4500:1 |
| | 65" 4500:1 |
| | 76" 4500:1 |
| | 86" 4500:1 |
| Dynamic Contrast Ratio | 55" 5000:1 |
| | 65" 5000:1 |
| | 75" 5000:1 |
| | 86" 5000:1 |
| Glass Hardness | AG Tempered Glass - Mohs Level 7 |
| NEW Glass Type | Low Parallax Zero Bonding - Heat tempered - Anti Glare - Super Glide Surface |
| NEW Main Board | 9950 MTK (MStar) |
| Life of Screen | 50,000 hours |

Interactivity

| | |
|-----------------------------|---|
| Writing Technology | High Precision IR Technology |
| Continuous Touch Points | 20 |
| Touch Resolution | 32768x32768 |
| Response Time | ≤5ms |
| NEW Touch Accuracy | 1mm |
| Minimum Object Size | 3mm |
| Touch Tool | Finger, Gesture, Passive Infrared pen |
| Simultaneous Writing | Yes |
| Ink In Tools | Yes - LYNX |
| Pens Included | 2 |
| Pen Type | Dual Recognition Stylus |
| Pen Holder | Integrated Full-length Pen Tray |
| Pen Tip Diameter | 3mm/7mm |
| Pen & Touch Differentiation | Yes |
| Pen Identities | 2 |
| Palm Rejection | Yes |
| Annotation Over Any Source | Yes |
| Classroom Essential Apps | Includes Whiteboard, Annotate, Timer, Media Players, Browser, PDF Reader, Screen Record, Spinner, Voting, Maths Tools |
| Compatibility | Windows 10, Linux, Mac, Android, Chrome |
| Tracking Rate | 6m/s |
| Scan Rate | 200Hz |
| Gestures & Edge Swipes | Windows Supported, OSX with additional Driver |

Connectivity

| | |
|--|--|
| OPS Slot | 1 - Intel® spec 80Pin |
| HDMI In | 3 |
| HDMI Out | 1 |
| USB-A 2.0 | 1 (1 USB for system upgrade) |
| USB Touch (type B) | 2 |
| NEW USB A 3.0 (Faster Data Transfer) | 4 |
| NEW USB C | 1x USB-C with video, audio, touch, power and hardware optimization and ethernet – front-mounted 1x USB-C with video, audio, touch, power and hardware optimization – side-mounted 1 (Supports 65W Charging) |
| LAN In (RJ45) | 1 |
| NEW LAN Out (RJ45) | 1 |
| RS-232 | Yes |
| Wake-on-Lan | Yes |
| NEW Wireless Adapter 2.0 + WAP | Upgraded |
| NEW Bluetooth | Yes – 5.0 |
| VGA In | 1 |
| Audio In | 1 (3.5mm) |
| Optical Out | 1 (Coax) |
| Headphone | 1 (3.5mm) |
| Total touch out ports | 2 |
| NFC Reader / Writer | Optional Extra |
| Camera | Optional Extra |
| Proximity Sensor | Yes |
| WiFi | IEEE 802.11a/b/g/n/ac with 2 × 2 MIMO (hotspot only) (both 2.4 and 5 GHz bands) |
| WiFi Speed | Capable of speeds up to 433Mbps |

Computing

| | |
|-----------------------------|---------------|
| NEW Operating System | Android 9 |
| NEW System Version | LUX 9 |
| NEW RAM | 6GB |
| NEW Internal Storage | 64GB |
| NEW CPU | Quad Core A73 |
| NEW GPU | Mali G52MC2 |
| Android Resolution | 4K |
| Integrated LUX UI | Yes |

Audio

| | |
|---|--|
| Dual Front Facing, Bass Enhanced Speakers | 2 x 15 Watt Speakers + 15 Watt Subwoofer |
| Audio Out | Yes |
| SPDIF / Fibre | Yes |
| Sound Channel | 2.1 |
| NEW Line Array Microphone 6 | Yes – Omni-directional up to 8 meters |
| Super Wide Sound | Yes |

Power

| | |
|------------------------------------|--------------------------|
| Power Requirements | 100 - 240 - 50/60Hz 3.5A |
| Power Consumption (Normal) | 55" 102W |
| | 65" 117W |
| | 75" 145W |
| | 86" 168W |
| Power Consumption (Standby) | < 0.5 Watts |
| Ultra Quiet Fanless Design | Yes |

Operating & Storage Environment

| | |
|------------------------------|-------------------|
| Operating Temperature | 0° to 40° |
| Storage Temperature | -20° to 60° |
| Operating Humidity | 10% to 90% RH |
| Storage Humidity | 10% to 90% RH |
| Altitude | Below 5000 metres |

Physical Specifications

| | |
|--------------------------|---------------------|
| Panel Dimensions | 55" 1262x794x89mm |
| | 65" 1488x920x90mm |
| | 75" 1709x1043x89mm |
| | 86" 1957x1182x86mm |
| Packed Dimensions | 55" 1428x220x902mm |
| | 65" 1628x208x1024mm |
| | 75" 1860x280x1163mm |
| | 86" 2112x280x1304mm |
| Net Weight | 55" 27.7Kg |
| | 65" 37.3Kg |
| | 75" 51.1Kg |
| | 86" 63.8Kg |
| Packed Weight | 55" 33.9Kg |
| | 65" 45.7Kg |
| | 75" 63.9Kg |
| | 86" 78.9Kg |
| VESA Mount Point | 55" 400x200mm |
| | 65" 400x200mm |
| | 75" 800x400mm |
| | 86" 800x600mm |

Warranty

Warranty term and upgrade options vary by region. Contact your local reseller or distributor for information and visit clevertouch.com/about/warranty

Compliance & Certification

Regulatory Certification CE, FCC, UL, Energy Star & EEC



IMPACT™ Built-in Features

| | |
|---|--|
| LYNX™ App With Online Lesson Planning | Yes |
| Cleverstore™ App Store For Education | Yes |
| Embedded Digital Signage | Yes |
| Clevershare™ Mirroring Any Device To The Board | Free for the life of the screen (touch back) |
| Integrated Personalised Accounts Profiles | Yes |
| Cloud Account Access | OneDrive Google Drive |
| Embedded Room Booking | Yes |
| Whiteboard Annotation | Yes |
| Email Out Direct From Touchscreen | Yes |
| Scan QR Code For Saving Work | Yes |
| CleverMessage™ - Instant Alert Messaging | Yes |
| Over-the-Air Updates | Yes |
| Remote Management Of Touchscreens (MDM) | Yes - Five year license |

Packed Contents - Inside your Clevertouch Box

| | |
|--------------------------|---|
| What's In The Box | (1) Clevertouch IMPACT Plus 2™ (1) 1.5M Length HDMI Cable (1) 3M Length USB cable (A-B) (2) 1.5M USBC Cable (1) 3M Regional Power Cable (1) 5M 3.5mm Audio Cable (1) Remote Control (2) Batteries for Remote Control (2) Dual Recognition Stylus (1) User Guide (1) Quick Install Guide (1) Wireless Adapter 2.0 + WAP |
|--------------------------|---|

Installation

The installation of this product should be completed by a qualified installer. Use of components not supplied by Clevertouch or not meeting minimum specifications may impact performance, safety and warranty. For more information, visit clevertouch.com

Support

For all Clevertouch products, visit: support.clevertouch.com

Display

| | |
|------------------------|--|
| Diagonal Size | 65" 4K, 75" 4K, 86" 4K |
| Screen Type | TFT LCD - Direct LED Backlight |
| Aspect Ratio | 16:9 |
| Display Colours | 1.07 Billion (10 bit) |
| Resolution | 4K UHD (3840 x 2160) |
| Response Time | 5ms |
| Refresh Rate | 60Hz |
| LCD Viewing Angle | 178° |
| Brightness | 400 cd/m2 |
| Contrast Ratio | 65" 4000:1 |
| | 75" 4000:1 |
| | 86" 4000:1 |
| Dynamic Contrast Ratio | 65" 5000:1 |
| | 75" 5000:1 |
| | 86" 5000:1 |
| Glass Hardness | Tempered Glass - Mohs Level 7 |
| NEW Glass Type | Low Parallax 1mm Air Gap - Heat tempered - Anti Glare - Super Glide Surface |
| Main Board | MS848 - MStar |
| Life of Screen | 50,000 hours |

Interactivity

| | |
|-----------------------------|---|
| Writing Technology | High Precision IR Technology |
| Continuous Touch Points | 20 |
| Touch Resolution | 32768x32768px |
| Response Time | ≤5ms |
| Touch Accuracy | 1.5mm |
| Minimum Object Size | 3mm |
| Touch Tool | Finger, Gesture, Passive Infrared pen |
| Simultaneous Writing | Yes |
| Ink In Tools | Yes - LYNX |
| Pens Included | 2 |
| Pen Type | Dual Recognition Stylus |
| Pen Holder | Optional Extra |
| Pen Tip Diameter | 3mm/7mm |
| Pen & Touch Differentiation | Yes |
| Pen Identities | 2 |
| Palm Rejection | Yes |
| Annotation Over Any Source | Yes |
| Classroom Essential Apps | Includes Whiteboard, Annotate, Timer, Media Players, Browser, PDF Reader, Screen Record, Spinner, Voting, Maths Tools |
| Compatibility | Windows 10, Linux, Mac, Android, Chrome |
| Tracking Rate | 6m/s |
| Scan Rate | 200Hz |
| Gestures & Edge Swipes | Windows Supported, OSX with additional Driver |

Connectivity

| | |
|---|---|
| OPS Slot | 1 - Intel® spec 80Pin |
| HDMI In | 3 |
| HDMI Out | 1 |
| USB-A 2.0 | 3 (1 USB port only for system upgrade) |
| USB Touch (type B) | 2 |
| USB A 3.0 (Faster Data Transfer) | 3 |
| NEW USB C (Video, Audio & Touch) | 1 (Supports 65W Charging) |
| LAN In (RJ45) | 1 |
| RS-232 | Yes |
| Wake-on-Lan | Yes |
| Wireless Adapter 2.0 + WAP | Yes |
| Clevertouch WiFi Module | Yes |
| NEW Bluetooth | Yes - 5.0 |
| VGA In | 1 |
| Audio In | 1 (3.5mm) |
| Optical Out | 1 (Coax) |
| Headphone | 1 (3.5mm) |
| Total touch out ports | 2 |
| NFC Reader / Writer | Optional Extra |
| Camera | Optional Extra |
| Proximity Sensor | No |
| WiFi | IEEE 802.11a/b/g/n/ac (2.4 and 5 GHz bands) |
| WiFi Speed | Capable of speeds up to 433Mbps |

Computing

| | |
|-----------------------------|-----------------------------|
| Operating System | Android Oreo 8 |
| System Version | LUX 8 |
| NEW RAM | 3GB |
| NEW Internal Storage | 32GB |
| CPU | Dual Core A73+Dual Core A53 |
| GPU | Dual Core Mali G51 |
| Android Resolution | 4K |
| Integrated LUX UI | Yes |

Audio

| | |
|----------------------------------|---------------------------------------|
| Speakers | 2 x 15 Watt Speakers |
| Audio Out | Yes |
| SPDIF / Fibre | Yes |
| Sound Channel | 2 |
| NEW Line Array Microphone | Yes - Omni-directional up to 8 meters |

Power

| | |
|------------------------------------|----------------------------------|
| Power Requirements | 100 - 240V 50/60Hz 4.0A |
| Power Consumption (Normal) | 65" 142W 75" 165W 86" 195W |
| Power Consumption (Standby) | < 0.5 Watts |
| Ultra Quiet Fanless Design | Yes |

Operating & Storage Environment

| | |
|------------------------------|-------------------|
| Operating Temperature | 0° to 40° |
| Storage Temperature | -20° to 60° |
| Operating Humidity | 10% to 90% RH |
| Storage Humidity | 10% to 90% RH |
| Altitude | Below 5000 metres |

Physical Specifications

| | |
|--------------------------|--|
| Panel Dimensions | 65" 1489x891x86mm 75" 1709x1013x89mm 86" 1957x1153x86mm |
| Packed Dimensions | 65" 1628x208x992mm 75" 1860x280x1132mm 86" 2112x280x1273mm |
| Net Weight | 65" 39.5Kg 75" 53Kg 86" 67.7Kg |
| Packed Weight | 65" 49.7Kg 75" 62.8Kg 86" 80.8Kg |
| VESA Mount Point | 65" 600x400mm 75" 800x400mm 86" 800x600mm |

Warranty

Warranty term and upgrade options vary by region. Contact your local reseller or distributor for information and visit clevertouch.com/about/warranty

Compliance & Certification

Regulatory Certification CE, FCC, UL, Energy Star & EEC



IMPACT™ Built-in Features

| | |
|---|--|
| LYNX™ App With Online Lesson Planning | Yes |
| Cleverstore™ App Store For Education | Yes |
| Embedded Digital Signage | Yes |
| Clevershare™ Mirroring Any Device To The Board | Free for the life of the screen (touch back) |
| Integrated Personalised Accounts Profiles | Yes |
| Cloud Account Access | OneDrive Google Drive |
| Embedded Room Booking | Yes |
| Whiteboard Annotation | Yes |
| Email Out Direct From Touchscreen | Yes |
| Scan QR Code For Saving Work | Yes |
| CleverMessage™ - Instant Alert Messaging | Yes |
| Over-the-Air Updates | Yes |
| Remote Management Of Touchscreens (MDM) | Yes - Five year license |

Packed Contents - Inside your Clevertouch Box

| | |
|--------------------------|--|
| What's In The Box | (1) Clevertouch IMPACT 2™ (1) 1.5M Length HDMI Cable (1) 3M Length USB cable (A-B) (1) 1.5M USB-C Cable (1) 3M Regional Power Cable (1) Remote Control (2) Batteries for Remote Control (2) Dual Recognition Stylus (1) User Guide (1) Quick Install Guide (1) Clevertouch WiFi Module |
|--------------------------|--|

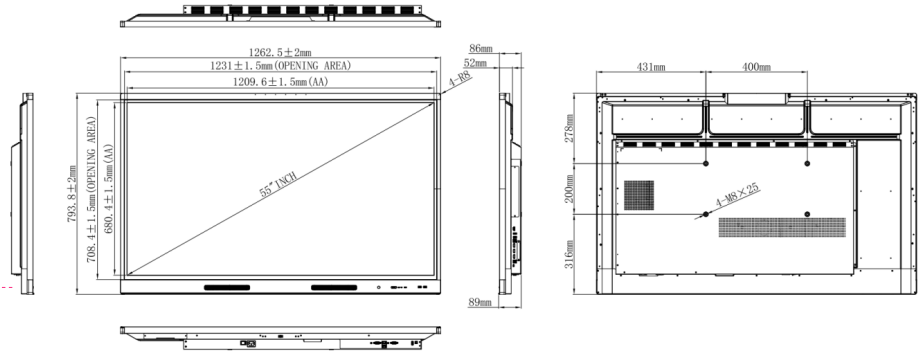
Installation

The installation of this product should be completed by a qualified installer. Use of components not supplied by Clevertouch or not meeting minimum specifications may impact performance, safety and warranty. For more information, visit clevertouch.com

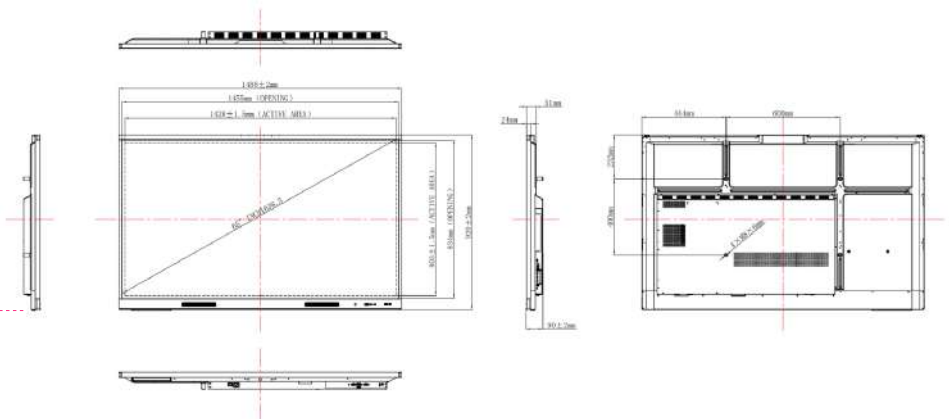
Support

For all Clevertouch products, visit: support.clevertouch.com

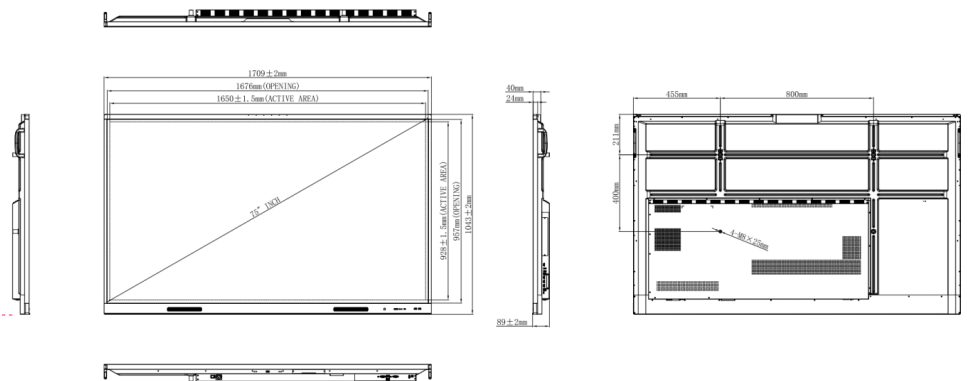
55"



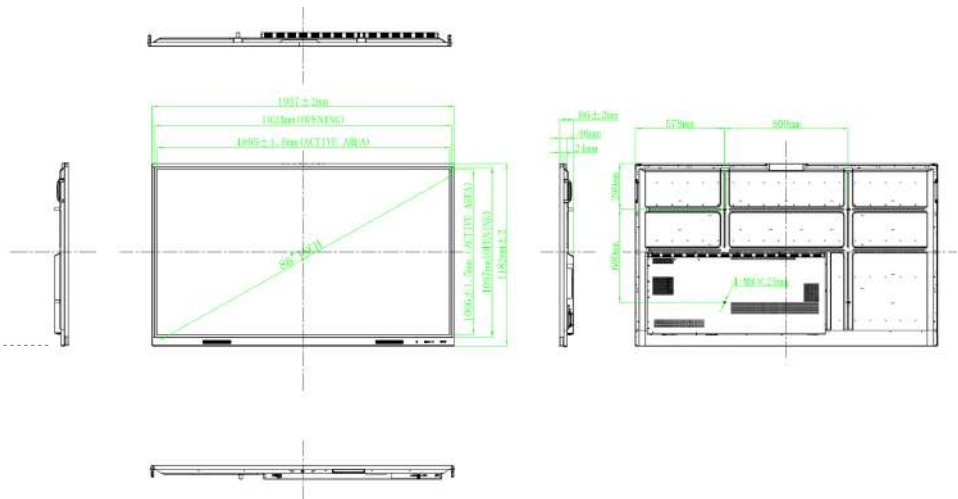
65"



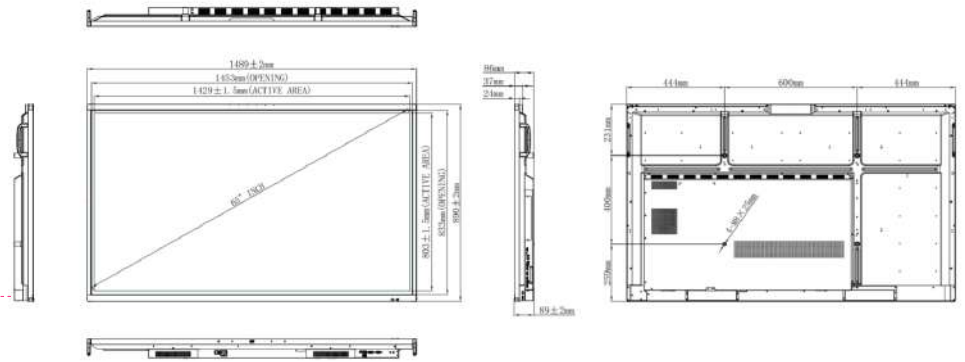
75"



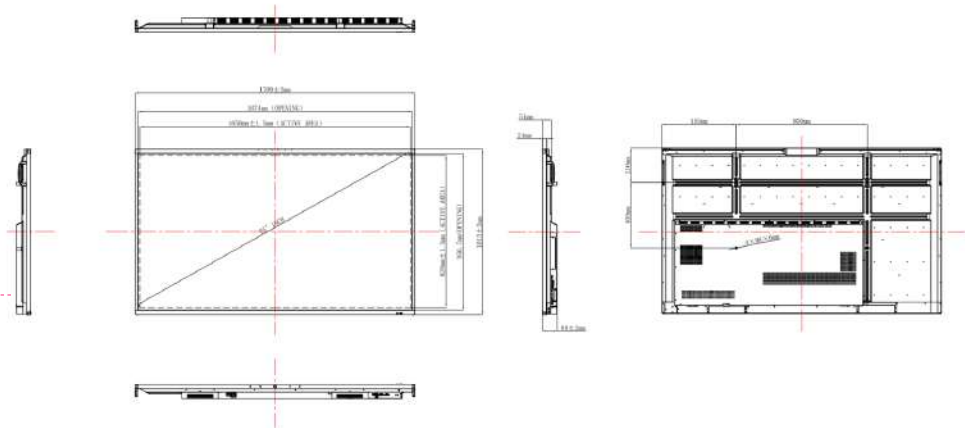
86"



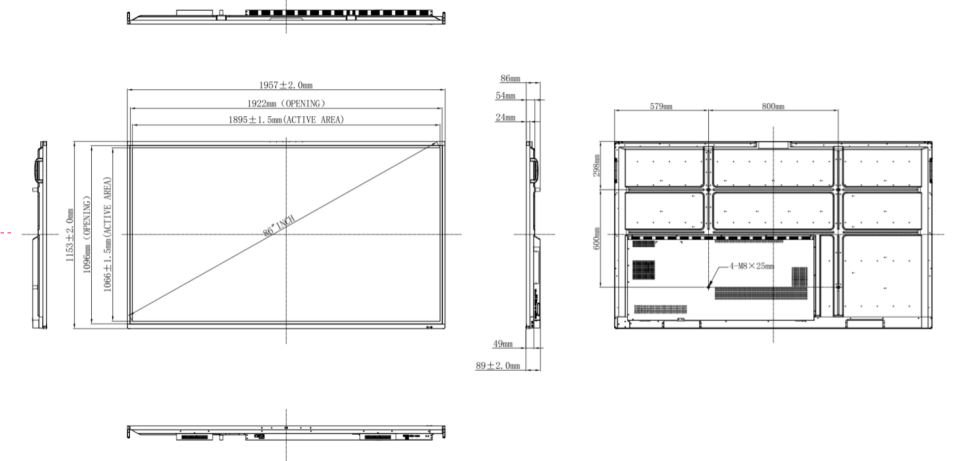
65"



75"



86"



Digital Ecosystem

A unique digital solution for every space which redefines the way to distribute information and collaborate using technology.



DIGITAL ECOSYSTEM

Reception Foyer
Digital Signage
Engagement Messaging



Way-finding
Directional Screen
Branding



Commercial Displays
Inform / Educate /
Promote



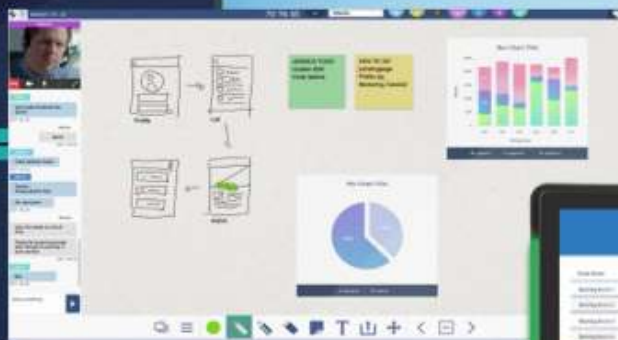
Infinity Whiteboard
Create documents
anywhere, with LYNX
Whiteboard



Room Booking
Centralised Room
Booking Panels



One-touch updates
Control what's on the
screen from your
mobile device

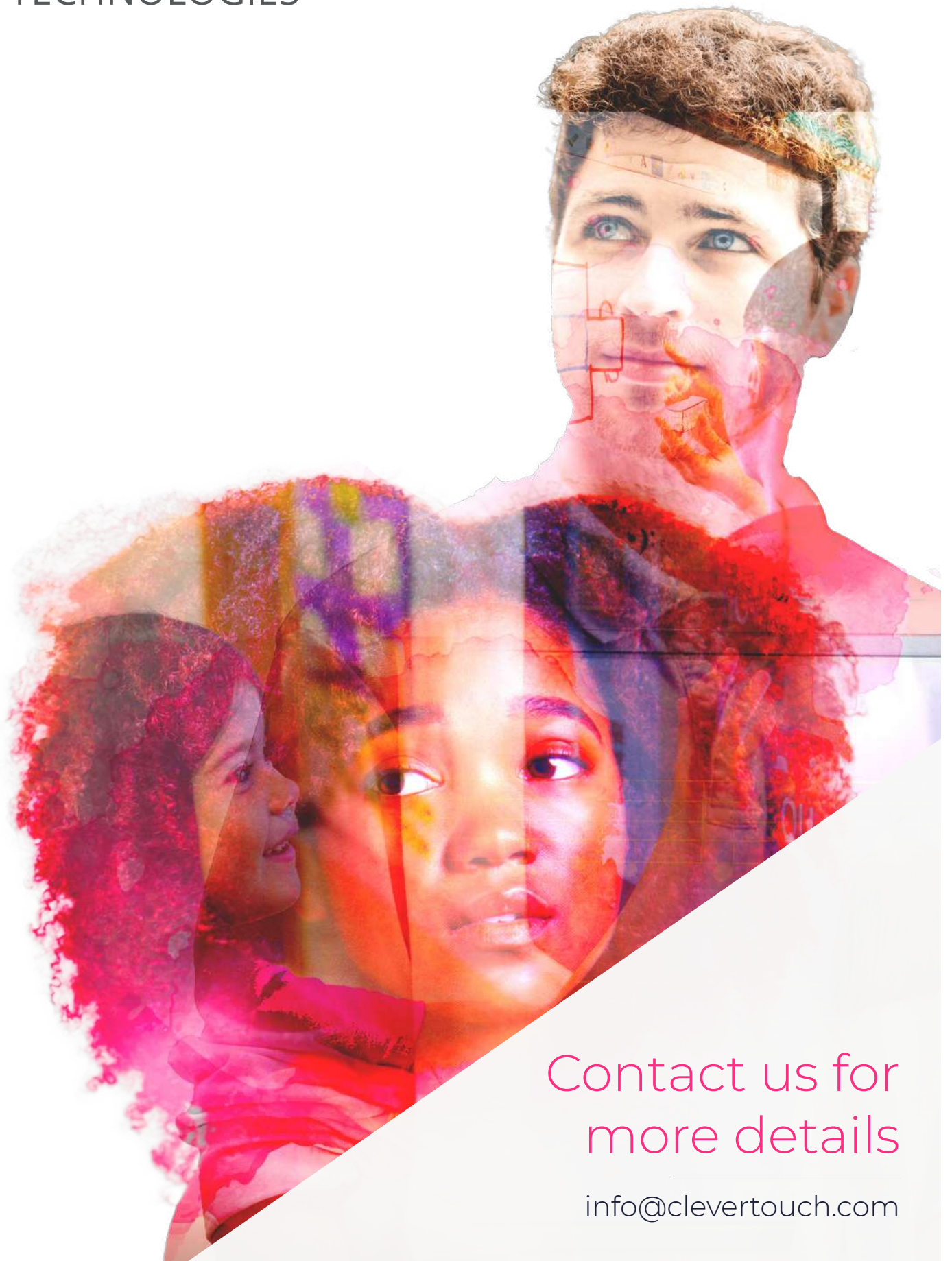


Our products work together to help your school function smarter!

QR Codes
Enhance your audience
experience with
interactive QR Codes
in presentations.

CLEVERTOUCH[®]
TECHNOLOGIES

clevertouch.com



Contact us for
more details

info@clevertouch.com