

Lustrelab® Marine Boatwash & Shine

Acrylionic® Polish Chemistry

Lustrelab's® unique Acrylionic® Polish proprietary chemistry is made from acrylic a strong, protective cleaner and coating. With each wash, Lustrelab® marine BOATWASH & SHINE Acrylionic® Polish formula removes light oxidation and dirt from the divots and cracks in the surface of your gel or paint coating and repairs/ fortifies the coating while increasing the shine with each use. (Exhibit-1). This protective coating is better than wax. Boatwash & Shine sheets water off of your coated finish. This eliminates water spotting caused by dirt accumulation that is trapped in water beads resulting from traditional waxed surfaces. It also allows the washed surface to dry streak- free reducing the need for towel drying (Exhibit –2). Scientific photos taken from a painted surface test application prove that traditional washes and waxes create a high angle of water contact, have more surface tension and less wet ability. This causes water beading that traps and collects dirt (Exhibit –3). Lustrelab's innovative **acrylionic® polish** chemistry increases surface wet ability and shine by decreasing the angle that water contacts the surface creating a strong tendency for water sheeting (Exhibit –4). This water sheeting action helps repel dirt. Marine BoatWash & Shine is environmentally friendly, readily biodegradable, contains no petroleum distillates, and is made in the USA.

Exhibit - 1
Painted /Gel Coat Surface
(Animation)

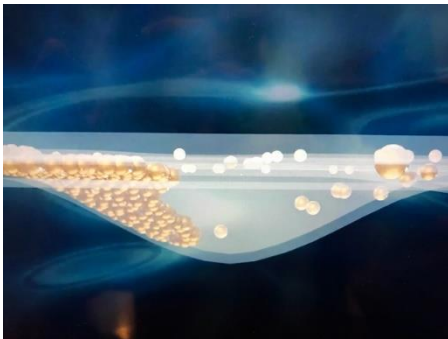


Exhibit - 2
Water Sheeting vs. Water Beading
(Boat Photograph)



Exhibit - 3
Traditional Waxed Surface
With Water Beading
(Photomicrographs)

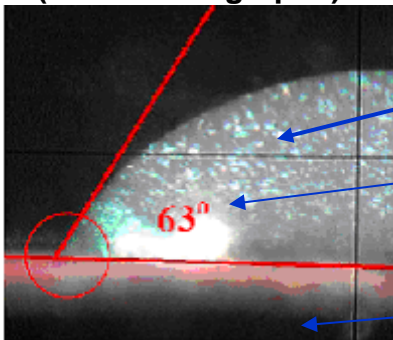
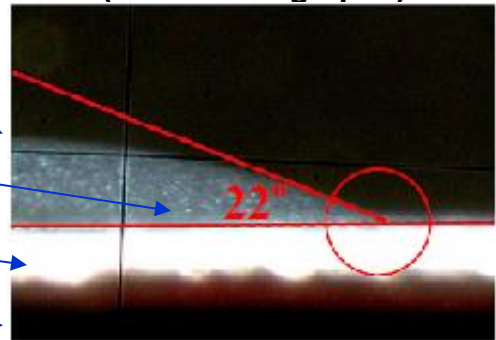


Exhibit - 4
Lustrelab® Marine acrylionic®
Surface with Water Sheeting
(Photomicrographs)



Water Droplets

Angle Of Contact

Lustrelab Marine

Painted Surface