

AquaPerk

Adds days between watering, improves soil health



Tree care

Field grown stock

Woody ornamentals

Potting mix

Lawns, Turf

New, Established



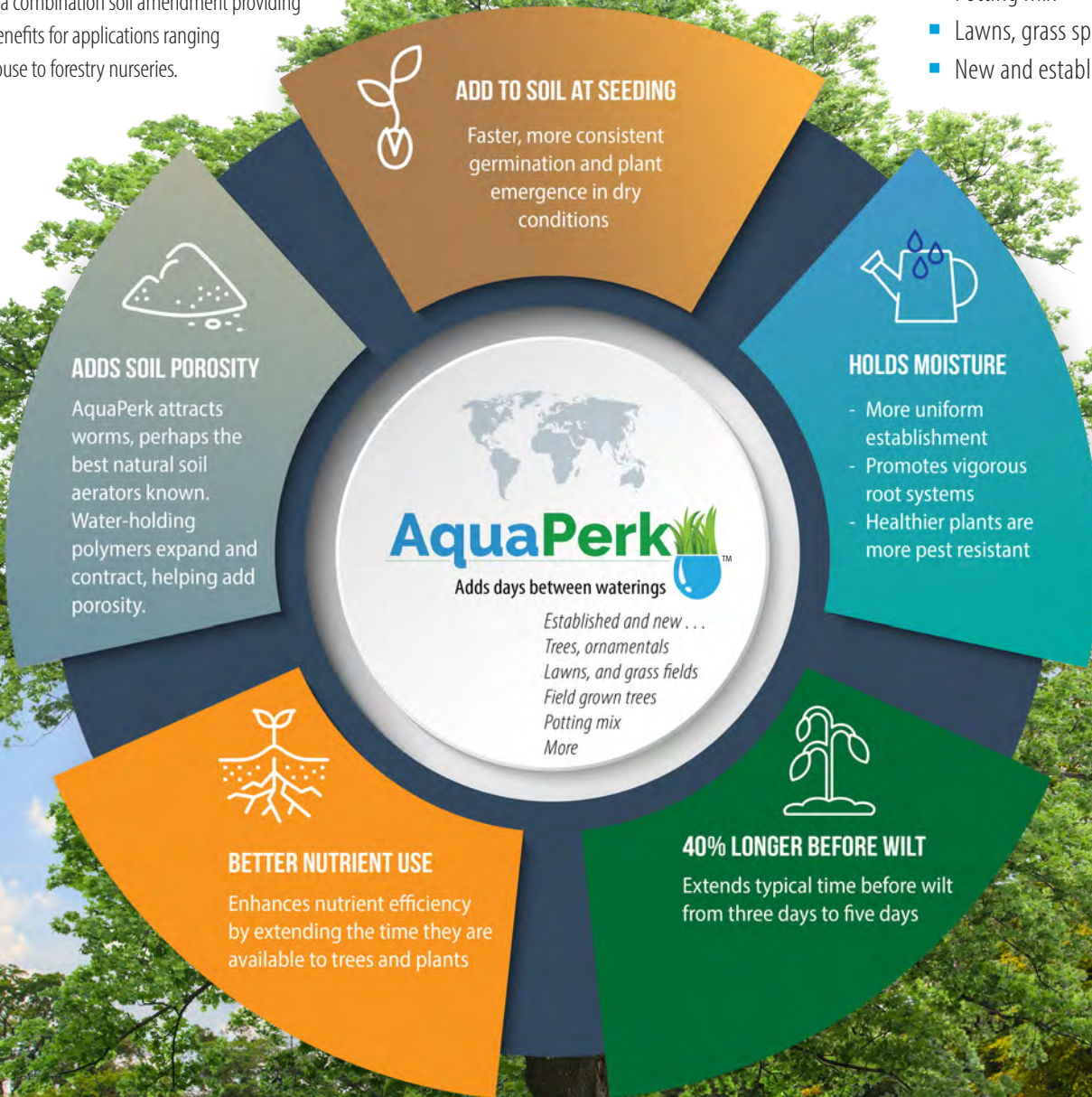
AquaPerk

Adds days between watering, improves soil health

Perfect for

- Tree care
- Field grown stock
- Woody ornamentals
- Potting mix
- Lawns, grass sports fields
- New and established

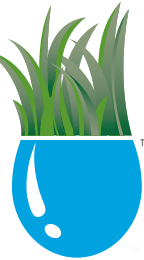
AquaPerk supports plant health for both mature and new landscape and turf plantings. Especially beneficial in dry climates, it is a combination soil amendment providing agronomic benefits for applications ranging from greenhouse to forestry nurseries.



Equipment for injecting AquaPerk is available. See back cover for more information.

AquaPerk

Adds days between watering, improves soil health



AquaPerk™ soil additive delivers multiple benefits based on a unique, patent pending combination of materials which include the latest generation of hydrogels specifically developed for agronomic purposes, and Spent Coffee Grounds (SCGs).

AquaPerk is ideal for use in established tree and lawn care, greenhouse potting soil, golf course divot mix, tree plantings, landscape installation and renovation, forestry nurseries, and more. In established plantings, it is best applied through injection, such as with AquaJect™ equipment.



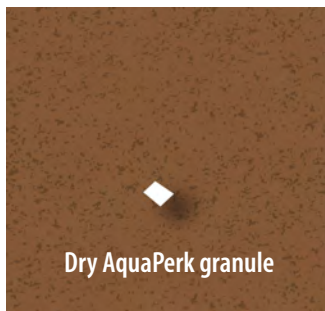
What AquaPerk Does

- Increases soil water holding capacity.
- Delays plant wilting in dry conditions by up to 40%, reducing watering and irrigation needs.
- Enhances plant growth by making water and nutrients available longer in the root zone for optimal plant absorption.
- Provides a buffer against inconsistent soil moisture content.
- Creates soil porosity, helps improve air/water balance in the root zone.

AquaPerk in the Root Zone

Only AquaPerk provides more days between waterings plus soil nutrients. AquaPerk improves soil porosity thanks to the made-for-agronomy hydrogel. And the Spent Coffee Grounds add nutrients and plenty of carbon to feed soil biology. There's nothing else like it.

How AquaPerk Helps Increase Soil Porosity



Dry AquaPerk granule

AquaPerk's hydrogel granule is about the size of a dry sugar crystal, and is dry before being mixed into the soil.



Expanded AquaPerk granule

The hydrogel granule grows to many times its original size when moistened, making space for the added mass it holds.



Dried AquaPerk granule

As it yields moisture to plant roots, and shrinks, it leaves behind some added pore space in the soil to help increase aeration and infiltration rates. *

A Virtuous Cycle



AquaPerk hydrogel granules recharge time after time, and eventually decompose, leaving nothing except healthier plants and added soil porosity.

* Expansion of the AquaPerk hydrogel varies based on soil density and consistency. Looser soil results in greater expansion. Tighter soil results in less expansion.

What a Concept!

AquaPerk™ is 67% hydrogel and 33% Spent Coffee Grounds (SCGs)



40% More Days Before Wilt

The AquaPerk hydrogel serves as a moisture reservoir between waterings that in dry conditions extends the time before wilt from 3 days to 5 days.

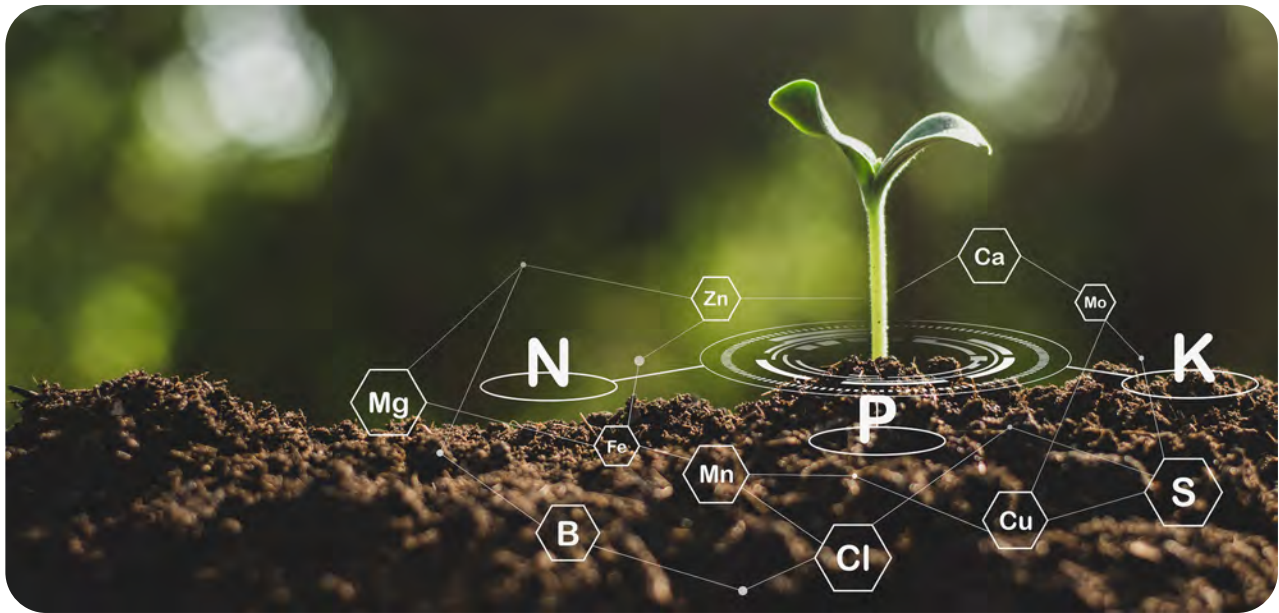
Plus

Added Carbon and Nutrients

AquaPerk Spent Coffee Grounds add carbon to help feed soil biology, plus organic nitrogen, and trace minerals. For established landscapes, injection is the most effective technique.



AquaPerk comes dry and already blended with Spent Coffee Grounds. It incorporates beautifully into dry soil, potting mixes and other soil additives, including dry fertilizers. Exposed to moisture, the AquaPerk hydrogel absorbs many times its mass in the soil, holding moisture that is 95% plant available, unlike some earlier hydrogel generations.



AquaPerk™ Spent Coffee Grounds (SCGs)

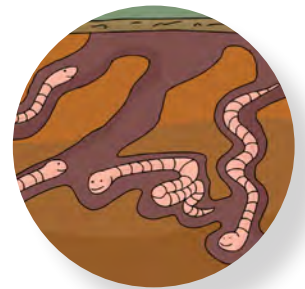
Spent Coffee Grounds provide a range of agronomic benefits. The real trick is acquiring a consistent, high quality, high volume supply that can meet demand. That's what we've done. Here is what the Spent Coffee Grounds in AquaPerk do for soil.

- Provides carbon to help stimulate beneficial biological activity.
- Adds a range of both macro- and micro-nutrients.
- Attracts earthworms that aerate soil, add organic matter, and enhance soil biology.
- Helps repel insects including slugs, snails, mosquitoes, fruit flies, and beetles.

Did You Know?

- Spent Coffee Grounds contain about 2% nitrogen.
- Their C/N (carbon to nitrogen ratio) ranges from 20-25 / 1, carbon to nitrogen.
- Spent grounds have a neutral 6.5 to 6.8 pH.

Earthworms thrive on Spent Coffee Grounds, helping keep soil healthy, porous, and alive.



AquaPerk flows and mixes easily with other amendments such as sand, peat, and popular inorganic amendments. It resists surface-caking due to high humidity for efficient incorporation and blending.

A Combination Amendment Like No Other

AquaPerk is a high performance combination product that is a perfect addition to soil where dry conditions are costly, and water use and related labor is expensive. Healthier soil leads to healthier plants, reduced input requirements, producing more profitable results.

If your livelihood depends on healthy plants, give AquaPerk™ a try.

USES AND RATES

For New Plantings



B&B trees, woody ornamentals, flower bed plantings

Mix AquaPerk with the removed native soil, and backfill on the bottom and sides of the root ball.

Depending on hole size, add approximately 1 cup of AquaPerk per cubic foot of removed soil. Mix thoroughly with the soil before backfilling.



Starting greenhouse plants

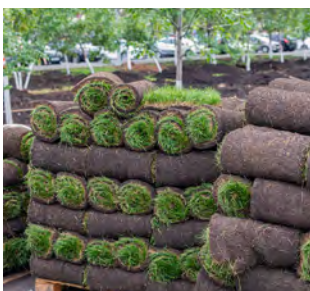
Add 4.5 to 6 pounds of AquaPerk per cubic yard of desired potting soil base mix. Incorporate thoroughly.



Potted, & Field grown trees

Add 4.5 to 6 pounds of AquaPerk per cubic yard of potting soil base mix. Incorporate thoroughly.

FIELD GROWN TREES Add, mix AquaPerk into backfill soil at 9 to 12 pounds per ton of removed soil.



Sod, natural sports fields

Apply 2.5 to 5 pounds of AquaPerk per 1,000 square feet. Incorporate by raking into the top few inches of native soil before laying sod. Or inject AquaPerk at the same rate.

For Established Plantings



For established trees, lawns, ornamentals

Inject 2.5 to 5 pounds of AquaPerk per 1,000 square feet to a depth of from 1 to 5 inches, depending on soil conditions. For established trees, inject from close to the trunk to slightly beyond the drip line. For lawns, inject 2.5 to 5 pounds per 1,000 square feet. For shrubs, ornamentals, flower beds, inject the same amount of AquaPerk directly into the root zone around the the base of the plant.

Inquire about AquaJect™ injection equipment.
Contact information below.

For Golf Courses



Divot mix

Add 9 to 12 pounds of AquaPerk per ton of sand-based divot mix.

AquaPerk is a product of DryJect® *Leader in soil injection technology for over two decades*