

sonic **B**TM

Quick Start + Instruction Guide

Item: SBWKBM

B • profound **style**

Welcome

Thank you for choosing this sonicB product. We are driven by a common pursuit of quality and excellence in daring design and bold products. But most importantly, we're inspired by YOU.

That's why we commit to encouraging you to B – who, what, or where you choose.

B you.

SLEEK
& SLIM

WIRELESS COMBO
FULL KEYBOARD + MOUSE

- 1 Welcome**
 - 1.1 What's In The Box

- 2 Your Wireless Keyboard & Mouse**
 - 2.1 Getting To Know Your Keyboard
 - 2.2 Getting To Know Your Mouse

- 3 All Features & Contents**

- 4 Quick Start Guide**
 - 4.1 USB Receiver Installation
 - 4.2 Mouse & Keyboard Setup

- 5 Specifications**

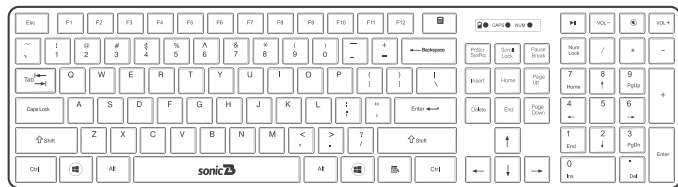
- 6 Troubleshooting & Customer Support**

- 7 Care & Warnings**

- 8 Warranty & Legal**

- 1 Welcome**
 - 1.1 What's In The Box

Wireless Keyboard



Wireless Mouse



USB Receiver



Batteries

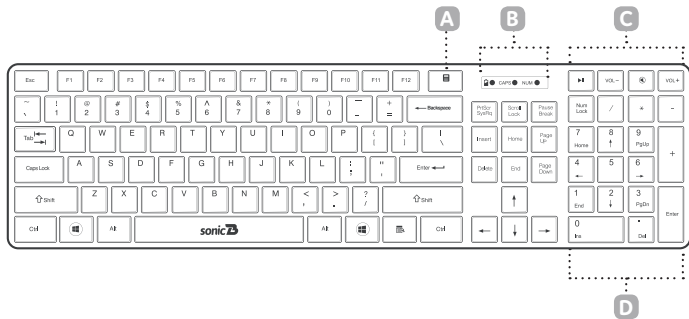


Guide Booklet



2 Your Wireless Keyboard & Mouse

2.1 Getting To Know Your Keyboard



A Calculator Hot Key

press to open your computers calculator

B LED Indicator Lights

show you if your keyboard has low battery and if your Caps Lock, & Num Lock are ON or OFF

C Quick Access Hot Keys

press to pause/play, volume control, & mute

D Number Pad

located on the far right of the keyboard the Num Lock key needs to be ON for it to function

2 Your Wireless Keyboard & Mouse

2.2 Getting To Know Your Mouse

A Left Mouse Button

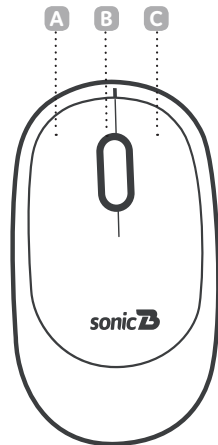
standard left click to select applications & programs

B Scroll Wheel

roll the scroll wheel to move up or down. It also doubles as a third button

C Right Mouse Button

standard right click to select pop-up menu of common commands



3 All Features & Contents



LONG / EXTENDED BATTERY LIFE

advanced tech to get more life out of batteries



PLUG & PLAY USB RECEIVER

connects both the keyboard and mouse



QUICK ACCESS HOT KEYS

separate pause/play/volume mute + calculator buttons



ADVANCED WHEEL SCROLLING

precise scroll wheel is faster and quieter



FULL-SIZE KEYBOARD

familiar feel with all keys + number pad



EXPLORE MORE

visit us at: sonicbaudio.com



COMPATIBILITY WITH

PC / LAPTOP / DESKTOP

MAC® · WINDOWS® · CHROME™

+ OTHER DEVICES WITH A USB PORT

2.4GHZ WIRELESS

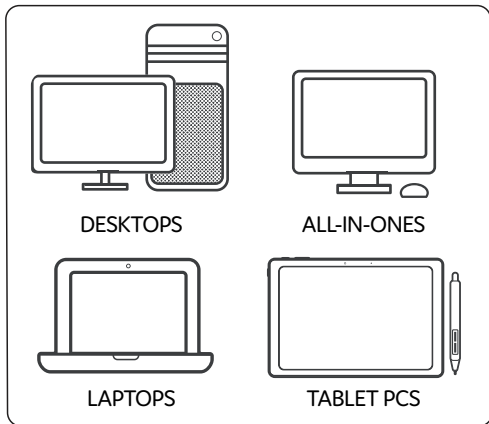
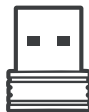
advanced 2.4 GHz wireless for powerful connectivity with virtually no delays or dropouts

CONTENTS: · Mouse · Quick Start & Instruction Guide · 2 x AAA batteries · Keyboard · USB Receiver · 1 x AA battery

4 Quick Start Guide

4.1 USB Receiver Installation

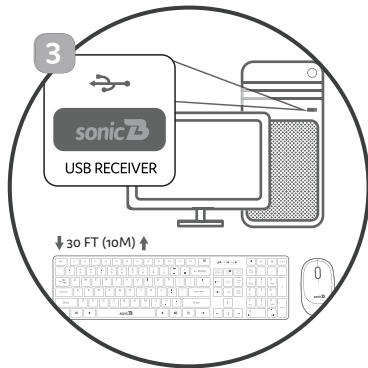
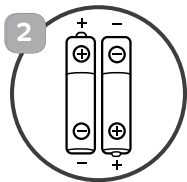
Locate a free USB port on your device. The USB Receiver is located in the bottom of the mouse next to the battery compartment. Remove the USB Receiver from the bottom of the mouse and Plug the USB Receiver into an empty USB port.



4 Quick Start Guide

4.2 Mouse & Keyboard Setup

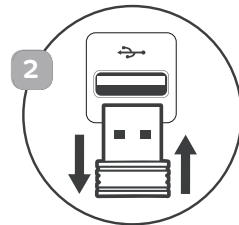
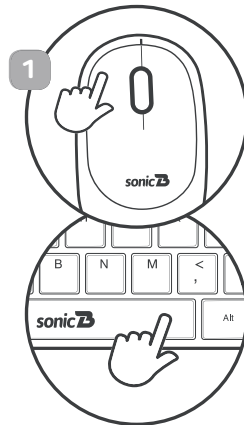
1 Install the included batteries into the battery compartments located on the bottom of your keyboard and mouse. **2** Make sure the polarity corresponds to the symbols in the battery compartment. **3** Place the keyboard and mouse where you intend to use them within 30 feet (10m) of the receiver.



4 Quick Start Guide

4.2 Mouse & Keyboard Setup

1 The mouse will automatically turn ON when the left, right, or scroll button is pressed, and immediately connect to the USB receiver. Click any key on the keyboard to connect with the USB receiver. **2** If your cursor on screen is not moving or keyboard is unresponsive, unplug and re-plug the USB receiver.



NOTE: The keyboard will go to sleep after 4s of no use. The mouse will go into a shallow sleep after 4s of no use. (RED light will blink twice) The mouse will go into a deep sleep after 10mins of no use. (RED light will be off) The mouse will wake up when left right, or scroll button is pressed. The keyboard will wake up with a click of any key on the keyboard.

5 Specifications

Specifications: Keyboard & Mouse	
WORKING DISTANCE	10m (30+ft)
OPERATING FREQUENCY RANGE	2.4GHz
KEY TYPE	Full Keyboard
WORKING VOLTAGE	3V (Keyboard), 1.5 V(Mouse)
WORKING CURRENT	3mA (Keyboard), 30mA (Mouse)
NUMBER OF MULTIMEDIA KEYS	5 Keys
NUMBER OF STANDARD KEYS	109 keys
SENSOR	Laser-grade optical sensor
SCROLL WHEEL	Yes
DPI	1000

6 Troubleshooting & Customer Support

Troubleshooting:	
NO CONNECTION BETWEEN THE MOUSE/KEYBOARD AND THE RECEIVER	<ul style="list-style-type: none">· Check the Nano Receiver and pull and plug again.· Try inserting the Nano Receiver into another USB port in your computer.· You may need to change the batteries in your mouse & keyboard

Customer Support Info:

Any issues or problems please reach us at:
support@sonicbaudio.com

7 Care & Warnings

Continuous use of any keyboard may cause injury to hands, wrists, arms, neck or back. If you feel ache, numbness or weakness in these areas, consult a qualified health professional.

TO REDUCE THE RISK OF SUCH INJURIES FOLLOW THESE PRECAUTIONS:

- **Position Yourself:** Choose a chair that provides support for your lower back. Adjust your work surface height and your chair to assume a comfortable and natural body posture.
- **Go Lightly:** Type with a light touch, keeping your hands and fingers relaxed. Avoid resting your palms or your wrists on any type of surface while typing. Don't rest on edges, such as the edge of your desk.
- **Take Breaks:** Take frequent short breaks. Get up and walk around at least a couple of times every hour. Adjust your chair so the seat does not press in to the back of your knees.

WARNING:

Batteries may leak harmful liquids or ignitable materials or explode causing injury and product damage.

- Do not mix old and new or other battery types.
- Replace all batteries at the same time.
- Replace fully discharged batteries immediately.

8 Warranty & Legal

The condition of this warranty and our responsibilities under this warranty are as follows: Supplier's warranty is non-transferable. This warranty is limited to the original purchaser only.

- You must be able to prove the date of original purchase of the unit with a dated receipt.
- The warranty is not applicable if the product has been subject to physical abuse, improper installation, modification or repair by unauthorized third party.
- The responsibility of supplier's products shall be limited to the repair or replacement of the product as its sole discretion.
- Specifically exempt from any warranty are limited-life consumable components subject to normal wear and tear such as batteries, decorates and other accessories.
- A supplier will not take any responsibility if the failure of the unit has resulted from accident, abuse, misuse, or any unauthorized repair, modification or disassemble.
- Modification and repair of the unit should be done by authorized and qualified service personnel, Center or returned to the manufacturer.
- This warranty give you specific legal rights, and you may also have other rights which vary under local laws.

Guidelines for protection of the environment



This appliance should not be put into the domestic garbage at the end of its useful life, but must be disposed of at a central point for recycling of electric and electronic domestic appliances.



This symbol on appliance, instruction manual and packaging puts your attention to this important issue. The materials used in this appliance can be recycled. By recycling used domestic appliances you contribute an important push to the protection of our environment. Ask your local authorities for information regarding the point of recollection.



The information contained herein is subject to change without notice. Microsoft and Windows are trademarks or registered trademarks of Microsoft Corporation in the United States and/or other countries. Mac® is a trademark of Apple Inc., registered in the U.S. and other countries. Chrome OS™ is a trademark of Google LLC. All other trademarks are the property of their respective owners.



SonicB™ is a registered trademark of iHip Europe Ltd.

Manufactured & Distributed by:
iHip Europe Ltd., Chartwell House,
292-294 Hale Lane, London, UK, HA8 8NP

MADE IN CHINA

