

sonic **B**TM

Quick Start + Instruction Guide

Item: SBBTE1

B • free style

Welcome

Thank you for choosing this sonicB product. We are driven by a common pursuit of quality and excellence in daring design and bold products. But most importantly, we're inspired by YOU.

That's why we commit to encouraging you
to B – who, what, or where you choose.

B you.



Wireless Earphones
with in-ear perfect-hold earpiece

1 Welcome

1.1 What's In The Box

2 Your Wireless Earphones

2.1 Getting To Know Your Earphones

2.2 Controller Features

3 Quick Start Guide

3.1 Charging & Powering ON

3.2 Bluetooth Pairing

4 Bluetooth Functions

5 All Features & Contents

6 Specifications

7 Troubleshooting & Customer Support

8 Care & Maintenance

9 Warranty & Legal

1 Welcome

1.1 What's In The Box

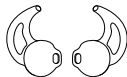
Guide Booklet



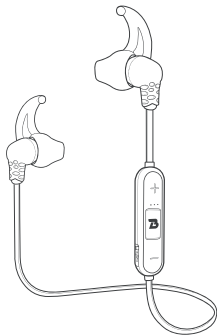
Micro USB Cable



Extra Pair of Ear Tips



Earphones



2 Your Wireless Earphones

2.1 Getting To Know Your Earphones

A Ear Tips

Soft silicone perfect hold ear tips

B Secure In-Ear Piece

Comfortably fits in your inner ear for a perfect hold when moving

C Rubberized Finish

Tough outer finish for extra durability

D Flat Cord

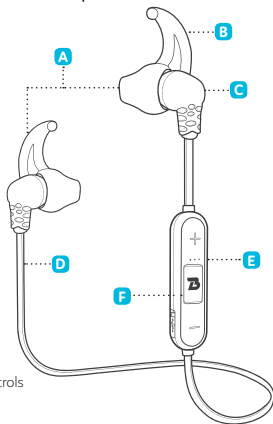
Tangle free cable

E Microphone

Answer calls hands-free

F Control Panel

This is the main area that controls both microphone functions, volume, and tracks



2 Your Wireless Earphones

2.2 Controller Features

A Volume (+) / Next Track

Skip to the next track.
Increase the volume.

B LED Indicator Light

Indicates if the earphones are on/off, pairing, or charging.

C Multi-Function Button

This button will do the following

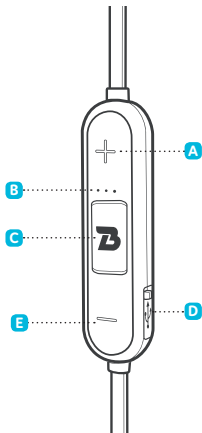
- Power on & off
- Pause & play music
- Answer & hand up calls
- Reject calls
- Redial

D Micro USB Charging Port

This is the area to plug-in and charge your earphones

E Volume (-) / Previous Track

Skip to the previous track.
Decrease the volume.



3 Quick Start Guide

3.1 Charging & Powering ON

- 1 Connect the Micro USB cable (only use the provided cable) to a computer USB port or a USB wall charger. Plug the other end of the micro USB cable into the Micro USB charging port (D) located on the left side of the microphone. While charging the LED indicator light (B) will turn RED and then turn OFF when the battery is fully charged.
- 2 Ensure the earphones are turned off, then press and hold the Multi-Function button (C) for 3-5 seconds to turn the earphones ON. The earphones will enter Bluetooth pairing mode automatically and emit a tone as the LED indicator light (B) will flash BLUE and RED.



NOTE: please refer to the diagram on 2.2

3 Quick Start Guide

3.2 Bluetooth Pairing

- 1 Ensure the earphones are turned off, then press and hold the Multi-Function button (C) for 3-5 seconds to turn the earphones ON. The earphones will enter Bluetooth pairing mode automatically and emit a tone as the LED indicator light (B) will flash BLUE and RED. Make sure your device has Bluetooth enabled
- 2 Ensure Bluetooth is enabled on your smartphone or music device. Your device will start searching for wireless devices. The earphones will appear as "sonicB B-Free" in the list of available Bluetooth devices.
- 3 Select "sonicB B-Free" The LED will begin to slowly blink blue, and the earphones will emit a tone to indicate that it has been successfully paired with your device.



NOTE: please refer to the diagram on 2.2

4 Bluetooth Functions

1 Answer & hang up calls

When there is an incoming call, press the Multi-Function button (C) once to answer the call, press the Multi-Function button (C) once again to hang up the call.

2 Reject calls

When there is an incoming call, press and hold the Multi-Function button (C) for 2-3 seconds to reject the call.

3 Redial last Number

Double press the Multi-Function button (C) to call the last number in the list of call history.

4 Pause & play music

When playing music, press the Multi-Function button (C) once to pause music, press the button once again to play music.

5 Next & last track

When playing music, press the Volume (+) / Next Track button (A) once to skip to the next track, press the Volume (-) / Previous Track button (E) once to skip to the previous track.

6 Volume up & down

When in a call or playing music, hold the Volume (+) / Next Track button (A) to increase the volume, hold the Volume (-) / Previous Track button (E) to decrease the volume.

NOTE: please refer to the diagram on 2.2

5 All Features & Contents



PERFECT-HOLD EARPIECE
for a secure & tight fit



UP TO 5HRS OF WORKING TIME:
advanced tech for extended
battery life & playtime



SWEAT RESISTANT:
for long lasting workouts



RECHARGEABLE BATTERY:
lithium ion



ENHANCED AUDIO
upgraded acoustics



BUILT-IN MIC:
handsfree talking



IN-EAR COMFORT:
with comfort-fit for
long listening



FLAT CORD
tangle free extra
strength & lightweight



WORKS WITH MAJOR BRANDS
+ OTHER BLUETOOTH DEVICES



MOBILE



TABLETS



COMPUTERS



EXPLORE MORE
visit us at:
sonicbaudio.com

CONTENTS:

- Wireless Earphones
- Micro USB Cable
- Extra Ear Tips
- Quick Start & Instruction Guide

6 Specifications

Specifications:	
FREQUENCY RESPONSE	20Hz - 20kHz
DRIVER UNIT	10mm
BATTERY	75mAh Lithium Ion
WORKING TIME	Up to 5 hours
CHARGING TIME	1-2 hours
IMPEDANCE	32 ohm
OPERATION RANGE	10m

NOTE:

working time depends on volume levels

- lower volume will prolong your estimated battery life.

- higher volume will decrease your estimated battery life.

7 Troubleshooting & Customer Support

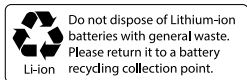
Troubleshooting:	
NO POWER	Recharge your earphones using the included micro USB cable.
MUSIC IS NOT PLAYING OVER BLUETOOTH	Make sure your Bluetooth device has A2DP profile. Check if both devices are paired and connected over Bluetooth. Restart the earphones to reconnect your Bluetooth device.
BLUETOOTH DEVICE WILL NOT RECONNECT WITH THE EARPHONES	Navigate to your Bluetooth settings menu on your Bluetooth device, tap "sonicB B-Free" and select "Forget". Now follow the steps to pair your device again.

Customer Support Info:

Any issues or problems please reach us at:
support@sonicbaudio.com

8 Care & Maintenance

- DO NOT expose the unit to liquid, moisture, or humidity to avoid damage to the product's internal circuitry.
 - DO NOT use abrasive cleaning solvents to clean the unit.
 - DO NOT expose the unit to extremely high or low temperatures as this will shorten the life of the electronic device, destroy the battery, and/or distort certain plastic parts.
 - DO NOT dispose of the unit in fire as they may explode or combust.
 - DO NOT expose the unit to and/or use sharp objects on the earphones as this will cause scratches and damage.
 - DO NOT attempt to disassemble the unit.
- In the event that the unit does not function properly, return it to the store where it was purchased.



9 Warranty & Legal

- The condition of this warranty and our responsibilities under this warranty are as follows: Supplier's warranty is non-transferable. This warranty is limited to the original purchaser only.
- You must be able to prove the date of original purchase of the unit with a dated receipt.
 - The warranty is not applicable if the product has been subject to physical abuse, improper installation, modification or repair by unauthorized third party.
 - The responsibility of supplier's products shall be limited to the repair or replacement of the product as its sole discretion.
 - Specifically exempt from any warranty are limited-life consumable components subject to normal wear and tear such as batteries, earbuds and other accessories.
 - A supplier will not take any responsibility if the failure of the unit has resulted from accident, abuse, misuse, or any unauthorized repair, modification or disassemble.
 - Modification and repair of the unit should be done by authorized and qualified service personnel, Center or returned to the manufacturer.
 - This warranty give you specific legal rights, and you may also have other rights which vary under local laws.

 **Bluetooth** is a trademark on a registered trademark of Bluetooth SIG Inc.

Guidelines for protection of the environment



This appliance should not be put into the domestic garbage at the end of its useful life, but must be disposed of at a central point for recycling of electric and electronic domestic appliances.



This symbol on appliance, instruction manual and packaging puts your attention to this important issue. The materials used in this appliance can be recycled. By recycling used domestic appliances you contribute an important push to the protection of our environment. Ask your local authorities for information regarding the point of recollection.

Siri® is a trademark of Apple Inc., registered in the U.S. and other countries.
Google Assistant is a trademark of Google Inc.



SonicB™ is registered in Europe as a trademark.

Manufactured & Distributed by:
SonicB, Chartwell House, 292-294
Hale Lane, London, UK, HA8 8NP

MADE IN CHINA

