

BUCKINGHAM MFG.

PN 65-Length SuperBase Anchor – Base Anchorage Device Instructions / Warnings:

Warning: Do not use this product if you cannot understand and follow the instructions and warnings that come with it and complete all necessary functions.

Buckingham's SuperBase Anchor is a versatile adjustable Base Anchorage System made from dual heavy duty ropes with stitched pockets for easy and safe connection around various size trees. With this anchorage you can just wrap the rope around the base of the tree and pull the Double Hole D-ring through the appropriate pocket rather than tying knots as with conventional base anchors. PN 65-10 (10' Model) is shown below, lengths, colors and hardware may vary from that shown.

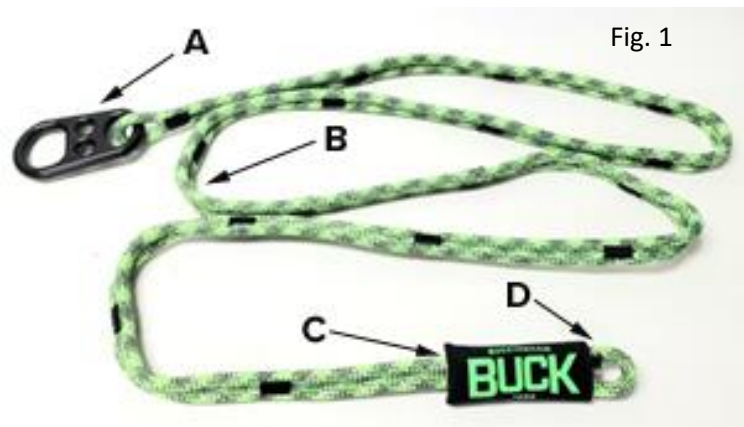
SuperBase Anchor components / key features are shown below (Fig. 1):

A – Superbase Double Hole D-ring

B - 10' Dual Rope with Segmented Pockets for Adjustability

C – Label Pack

D - Termination Eye



PRIOR TO USE:

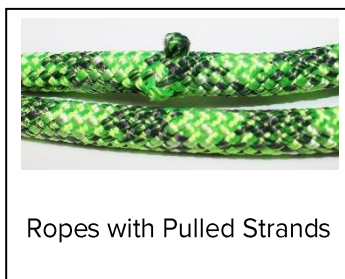
- This equipment is intended for use by properly trained professionals only.
- Acquire relevant training and competence for using this system prior to first use.
- The SuperBase Anchor is designed to be used only with a compatibly rated arborist saddle equipped with approved suspension attachment points.
- Know the job and the regulations governing requirements and select proper equipment.
- Manufacturer's instructions shall be provided to users with this product. Read and understand all instructions and warnings provided by Buckingham included with the product as well as all associated equipment before use.
- The SuperBase Anchor must be properly inspected, installed, adjusted and used in accordance with the manufacturer's instructions to function as designed and intended. Proper use of this device according to Buckingham's warnings and instructions is the user's responsibility. Death or serious injury may result to the user in the event that the device is used incorrectly.
- Work at height is a high-risk activity. It is your responsibility to manage those risks. Failure to manage risks may result in serious injury or death.
- Understand the scope of application of each component and any limitations.
- Accept that there can be no claim for damages, injury or death resulting from misuse of equipment.
- Visually inspect this product, and all related equipment, before each use. See inspection criteria below. The inspection should include but not be limited to the following:

INSPECTION:

Rope Inspection:

- Inspecting your rope should be a continuous process of observation before, during, and after each use.
- Inspect rope fibers for signs of excessive wear, burns, cuts, abrasions, kinks, knots, hockling, ice buildup, broken strands in any given area of the rope. Both outer and inner fibers contribute to the strength of the rope. If either is worn, the rope will naturally be weakened. Open the rope strands and look for powdered fiber, which is one sign of internal rope wear.
- Do not use rope that shows signs of excessive wear such as but not limited to those shown in Fig. 2a through 2d.
- Inspect the rope for frayed strands and broken yarns. Check for pulled strands. A pulled strand should be re-threaded into the rope, if possible, otherwise it may snag on a foreign object during use.
- Inconsistent texture or stiff areas can indicate excessive dirt or grit embedded in the rope or shock load damage.
- Inconsistent diameter (flat areas, bumps, or lumps). This condition indicates core or internal damage from overloading or shock loading.
- With use, all ropes become dirty. Inspect for areas of discoloration that could have been caused by chemical contamination and may result in the rope becoming brittle or stiff.
- Glossy or glazed areas that generally indicate signs of heat damage.
- Inspect the thread of the stitched eye for discoloration that could have been caused by chemical contamination and may result in the thread becoming brittle.
- Rope, or rope stitching and all ends are free of defects. Stitched eyes and serrations have no loose, cut, or missing stitching (Fig. 2e).
- If ice or snow build-up is noted, do not use this product until build-up is removed by thawing. Ensure the SuperBase Anchor, climbing lines and coils of the prusik are clean and free of packed snow or ice or of any debris. NOTE: Prior to and while in use, particularly in extreme weather conditions (i.e., blizzards, high winds, etc.) guard against debris (pebbles, twigs, packed snow, ice, mud, etc.) becoming lodged in any of the component assemblies as well as any buildup on the ropes, as debris / build up could block or restrict proper function. If noted, ensure unit is cleared.
- Do not use SuperBase Anchor, climbing lines or prusiks that have the warning center / core exposed.

See photos below for examples of a variety of conditions indicated above:



Ropes with Pulled Strands

Fig. 2a



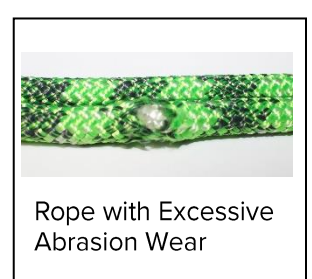
Ropes with Broken or Cut Strands

Fig. 2b



Melted / Glossy or Glazed Strands

Fig. 2c



Rope with Excessive Abrasion Wear

Fig. 2d

Hardware Inspection:

- All hardware and carabiners must be inspected, before and after each use.
- Inspections must ensure all surfaces of the hardware and carabiners to be free of cracks, sharp edges, corrosion, burrs and excessive wear (examples of burrs and sharp edges shown in Fig. 3).
- Ensure carabiner gates operate freely, smoothly, close and lock completely.
- Inspect to ensure no cracks, distortion, corrosion, or nicks exist.

If any evidence of wear or deterioration as outlined is observed, immediately cease use, destroy the product, and replace it with new equipment. Should any unusual conditions not outlined above be observed or you have reasonable doubt about a particular condition, remove the equipment from service and notify your Supervisor, Safety Director, or contact Buckingham Mfg. Co. for clarification.



Fig. 2e



Fig. 3

USE

- Use the SuperBase Anchor to anchor your tree climbing line to the tree.
- Pass the SuperBase Anchor around the circumference of the tree near the base.
- Insert the Double Hole D-ring through any pocket along the length SuperBase Anchor which allows it to chinch tightly against the tree.
- Optional carabiners may be inserted through any pocket along the length of the SuperBase Anchor.
- Rig to allow a climber to be lowered to the ground by his coworkers in case of an emergency rescue is needed.
- Use any hole in the Double Hole D-ring to accept additional hardware, based on your climbing needs and style to create a fully adjustable system.
- A few acceptable configurations as shown below using the SuperBase Anchor.



Fig. 4 - Figure 8 On A Bite Stopper Knot Configuration.



Fig. 5 - Spliced Eye Capture Configuration



Fig. 6 - Belay Configuration Option 1.



Fig. 7 - Belay Configuration Option 2



Fig. 8 - Belay Configuration Option 3 (Knot Pass Through).



Fig. 9 - Approved Passing Sheet Bend Knot with Yosemite Finish

WARNINGS

- ◆ This equipment is intended for use by properly trained professionals only. Do not use without proper training.
- ◆ When attaching the carabiner it is critical to capture one side of the double strand rope and not attach the carabiner through the stitched section. The carabiner must only attach through one segmented attachment point on the SuperBase Anchor Rope, never attach through multiple segmented attachment points (Fig. 10).
- ◆ Be certain this equipment is suitable for the intended use and work environment. If suitability for intended use is in doubt, consult a safety engineer or contact Buckingham Mfg. before using.
- ◆ Fall protection equipment, (i.e., fall arrest, work positioning belts, retrieval, suspension etc.) should not be resold or provided to others for re-use after use by original user as assurance cannot be granted that a used product meets criteria of applicable standards and is safe for use to a subsequent user.
- ◆ Before use the first time, the user should conduct a suspension test in a safe place to ensure that the equipment is the correct size, has sufficient adjustment and is of an acceptable comfort level for the intended use.
- ◆ Before use of the equipment, consideration should be given as to how any necessary rescue could be safely achieved.
- ◆ This product is to be used for positioning and suspension only, **NOT FOR FALL ARREST**. Therefore, it may be necessary to supplement arrangements for work positioning / suspension with collective means (i.e., safety nets) or personal means of protection against falls from a height (i.e., fall arrest system).
- ◆ This SuperBase Anchor is to be used for climbing purposes only. Do not use for hoisting equipment or material.
- ◆ User weight not to exceed 350 lbs. when fully equipped.
- ◆ In Exceptional cases such as aerial rescue, the users combined weight is not to exceed 500 lbs. maximum when fully equipped. This method of rescue can only be used by rescuers specially trained in this technique and having adequate strength and the physical ability to hold the worker at any point during the rescue. In this case, additional friction may be needed to perform a slow and controlled descent with no impact loading tolerated. The user performing the rescue can add additional friction to the system by tailing the rope and or wrapping the line around a suitable stationary object (such as a tree or pole) to create friction. The amount of friction can be controlled by varying the number of wraps around the stationary object. This type of rescue system is intended for use by experienced professionals only. After rescue applications, components of this system must be inspected by a competent person.
- ◆ Equipment subjected to impact loading must be immediately removed from service, destroyed and discarded.
- ◆ Use PPE equipment only for the specific purpose for which it is designed and intended.
- ◆ Use only with equipment meeting standards for intended use.
- ◆ Only Buckingham Mfg. Co. or those people authorized in writing by Buckingham Mfg. Co. may make repairs / modifications to this equipment.
- ◆ Before each use check that: 1) unit is free of burns, cuts, abrasions, kinks, knots, broken strands, excessive wear or evidence of impact loading. 2) Ring is not bent, distorted, cracked, corroded or show signs of excessive wear. Remove from service, destroy and discard unit if it does not pass this inspection and replace immediately.
- ◆ Replace if stitching is damaged, loose, cut, missing or torn (Fig. 2e).
- ◆ Never wrap a SuperBase Anchor around a sharp structural member. The material could be cut or damaged. Sharp and abrasive surfaces may include but not be limited to (sheet metal, steel, concrete, block, stone, Laminated materials etc.).
- ◆ Avoid contact of this equipment with high temperature surfaces, welding or other heat sources.
- ◆ Avoid contact of this equipment with chemicals which may damage the material. If in doubt, contact supplier or Buckingham Mfg. Co.
- ◆ Never use the SuperBase Anchor on a compromised, dead, leaning, diseased, unstable, loose barked tree, or a utility pole. For use only on trees / limbs that have been identified and determined capable of supporting your intended load by a specifically trained and competent user.
- ◆ Use only connectors (snaphook / carabiners) having a minimum gate rating of 3600 lbf. and meeting the ANSI Z359.12 requirements for use with the SuperBase Anchor.
- ◆ Never use the SuperBase Anchor. if you are currently taking any medication (including prescription) and/or using and/or consuming any substance, including alcohol, that may limit your ability to use this product in a safe manner as outlined in these instructions.

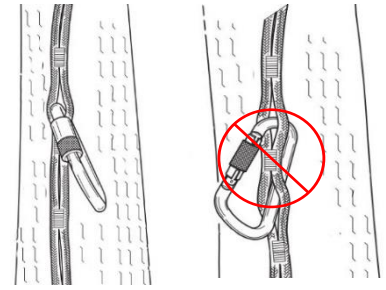


Fig. 10

- ◆ Do not use the SuperBase Anchor. during inclement weather or unsafe conditions including, but not limited to, thunderstorms threatening and/or present, winds, lightning, rain, snow, sleet, icy conditions, and/or any other atmospheric condition which may impede the user's ability to operate the product in a safe manner as outlined in these instructions.
- ◆ Always visually check that: 1) each carabiner / snap hook freely engages anchor points or work positioning and or suspension points, 2) keeper / gate is completely closed with each use. **Never** rely solely on the feel or sound of a carabiner / snap hook engaging.
- ◆ Make sure each carabiner / snap hook is positioned so that its keeper / gate is **never** load bearing.
- ◆ Never use combinations of components or sub systems, or both, which may affect or interfere with the safe function of each other.
- ◆ Ensure there is no pressure on the snap hook locking mechanism sufficient to depress it as this will, due to its length, render it incompatible with currently designed rings and make it very susceptible to rollout.
- ◆ Never disable locking keeper / gate on snap carabiner / snap hook, punch holes in or alter a connecting device in any way.
- ◆ Employer - instruct employee as to proper use and warnings before use of equipment.
- ◆ Read, understand and follow all instructions and cautions attached to and/or packed with product before using this equipment.
- ◆ Know and follow the ANSI Z133.1-2017 Standard. To obtain a copy of the ANSI Z133 -12 Standard, call NAA at 1-800-733-2622 or ISA at 1-888-ISA-TREES.

Cleaning / Maintenance / Storage

- Proper maintenance and storage of your equipment will prolong its useful life and contribute toward its performance. Clean rope with water and mild soap (a dish washing soap that removes grease (i.e., Dawn)) and allow to air dry thoroughly without using excessive heat or sunlight.
- If necessary, hardware may be cleaned with a solvent based oil such as BuckLube, WD-40®, etc. that does not contain chlorine or chemicals corrosive to steel or zinc.
- Lubricate carabiner gates on at least weekly or as often as required to maintain smooth operation (no binding) with light weight lubricant such as BuckLube, WD-40®, etc.
- Do not store near solvents or corrosive chemicals or at extreme temperatures. This product should be stored in a clean and dry environment out of direct sunlight and away from extreme climate conditions. Ropes should be stored on racks or hooks to provide ventilation and should never be stored on concrete or dirt surfaces.
- Apart from visual examination of product before and after each use, it should be inspected at least twice a year by a competent person capable of determining the suitability for use.

NOTE: Ensure proper fit / size of product before use. This product cannot be returned unless it is in new / unused condition.

STATEMENT of OBSOLESCENCE:

Precise "useful life expectancy" or "shelf life" for this product is not specified, as the degree of use, conditions of use, and the degree of care and storage determines useful life. All users maintain responsibility to select proper equipment for the job, be properly trained in its use, and ensure all personnel support equipment passes inspection before each use. Upon evidence of defects, damage or deterioration, all equipment shall be removed from service immediately and tagged or marked as unusable or destroyed. Additionally, all equipment shall be inspected on a regular basis not to exceed one year by a Competent Person, as defined by OSHA/ANSI, to verify that the equipment is safe for use. In the event of any question or concern regarding the condition of such equipment, users shall remove the equipment from service for further inspection. All users must comply with OSHA/ANSI/ASTM standards prior to and in using such equipment. For more information regarding safe and appropriate use of equipment, please contact Buckingham Manufacturing at 1-800-937-2825.

INTERNATIONAL USERS:

Notwithstanding the above, please know that certain international jurisdictions require manufacturers of equipment to provide customers with a maximum useful lifespan (sometimes referred to as a “Statement of Obsolescence”). To the extent required, Buckingham personal protective equipment manufactured from synthetic fiber materials including but not limited to items such as webbing and/or rope are subject to a maximum useful lifespan of ten (10) years from the date of manufacture. As stated above proper usage, storage, maintenance, and care impacts the useful lifespan of equipment. Extreme circumstances may require that product must be retired after only one use. This statement is made in conformance and compliance with BS EN 365:2004. International users must ensure that product inspections are completed by Competent Persons as defined by international standards including but not limited to British Standard (“BS”). If equipment fails any inspections, it must be immediately withdrawn from service and destroyed. For more information regarding safe and appropriate use of equipment, please contact Buckingham Manufacturing at 1-800-937-2825.

OUR GUARANTEE:

We guarantee the equipment we manufacture to be free from defects in material and workmanship. We will repair any equipment deemed to be defective which is returned to us by the original purchaser. However, this guarantee is void if any product is changed or altered in any way, or if the product is used in a manner other than for which it is intended. This express guarantee supersedes all other expressed or implied guarantees, obligations or liabilities. There are no implied warranties of merchantability or fitness for a particular purpose and as such, all implied warranties are specifically disclaimed.

LIMITATION ON LIABILITY:

In no event will Buckingham or buyer be liable to the other for lost revenues, lost profits or any other indirect, consequential, special or punitive losses or damages, however caused, whether in action for breach of contract, strict liability, tort, or otherwise, even if advised of the possibility of such losses or damages. In no event will Buckingham’s liability exceed the total amount paid by the buyer to Buckingham for the product or equipment giving rise to such claim(s).

Please see other terms and conditions relating to this product at <https://buckinghammfg.com/terms-conditions/>

REGISTRATION:

Before use of the product, ensure to register and confirm the product at www.buckinghammfg.com/register.

BUCKINGHAM MFG.
BINGHAMTON, NY
1-800-937-2825
www.buckinghammfg.com