

Light Bucket Light Installation Guide

Below are images of what is included with your purchase of our light buckets (4.5" LED lights sold separately).

What you will need:

1. Light Buckets (material and finish will vary depending on your order)
2. 8 x Stainless Nylon Insert Lock Nuts
3. 8 x Stainless Washers
4. 8 x Nylon Threaded Depth Adjusters
5. 4.5" LED Lights



Recommended Tools:

1. Socket wrench with $\frac{3}{8}$ " socket
2. Dremel
3. Pen or pencil

Steps:

- 1) Hand thread one nylon threaded depth adjusters to each of the studs on the light buckets (see Image A).



Image A

- 2) Once you have threaded all the nylon threaded depth adjusters, insert the lights into the light buckets.
- 3) Using your pen or pencil, place a mark where the edge of the light meets the nylon threaded depth adjuster on the nylon thread.

Note: If the nylon threaded depth adjuster meets flush with the edge of the light, you do not need to do steps 4-6.

- 4) Remove the threaded nylon depth adjuster from the stud.
- 5) Using your dremel, cut the nylon threaded depth adjuster where you placed your mark.
- 6) Hand thread the nylon threaded depth adjuster back into the original stud you unthreaded it from.

Repeat steps 3-6 for the remaining 7 studs.

- 7) Once step 6 is completed, insert a washer followed by a stainless nylon insert lock nut for all 8 studs.
- 8) Using your socket wrench with a $\frac{3}{8}$ " socket, tighten the nut (see Image C)

Repeat for the remaining 7 studs.



Image B

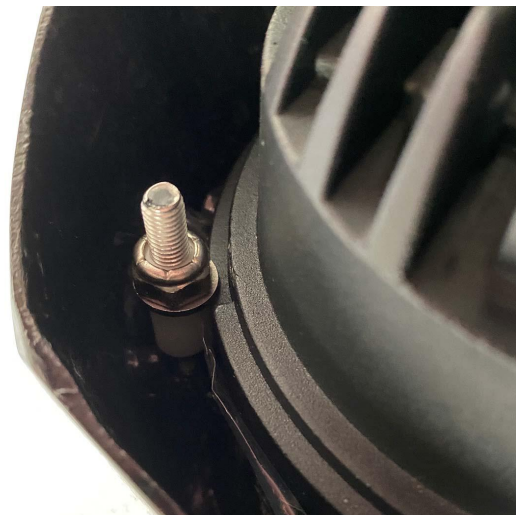


Image C

- 9) Once step 8 is complete, your lights will be securely attached to the light buckets (see Image D) and are ready to be installed onto our Anvil Auto Lower Valance.



Image D