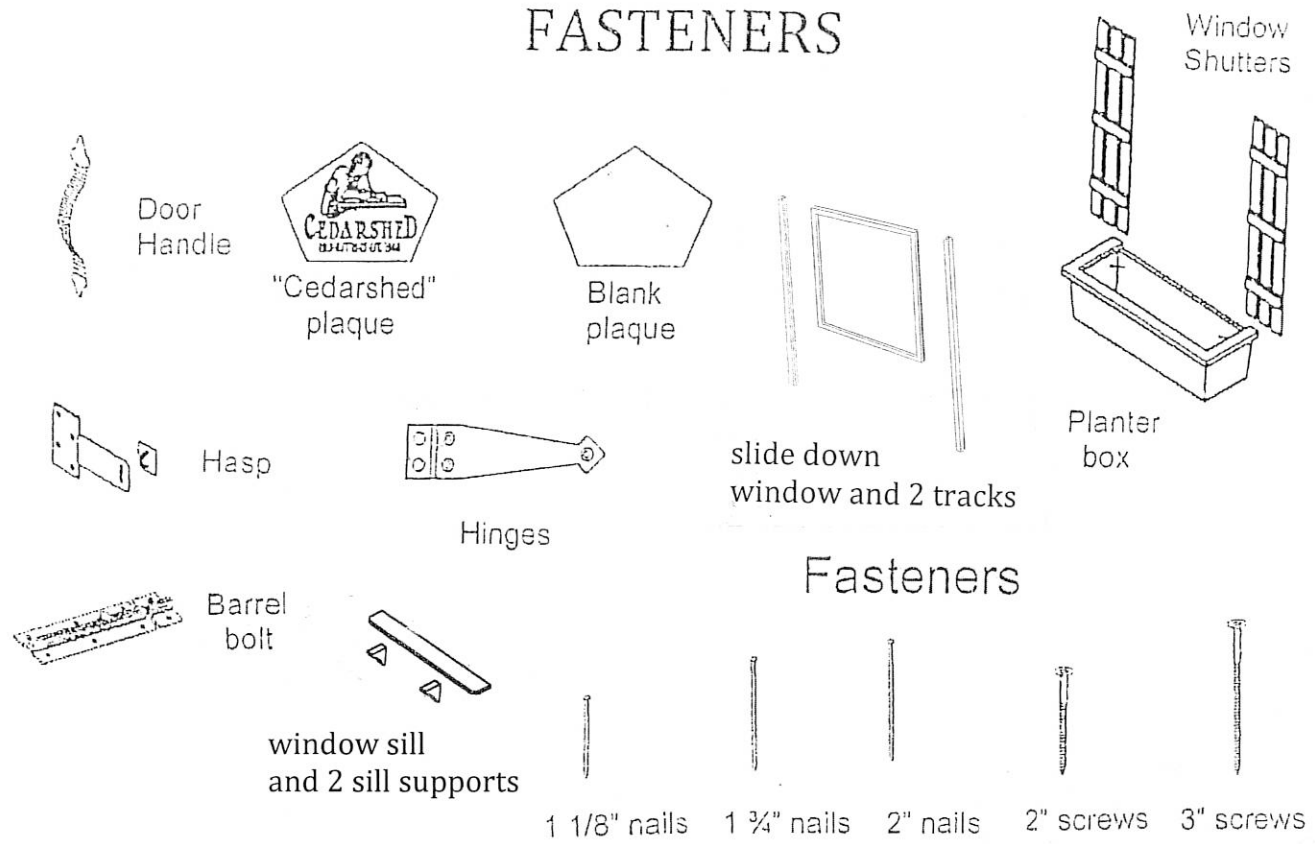


10 Ft. x 14 Ft.  
GABLE PORCH SHED  
(ClubHouse)



# ACCESSORIES, HARDWARE, AND FASTENERS

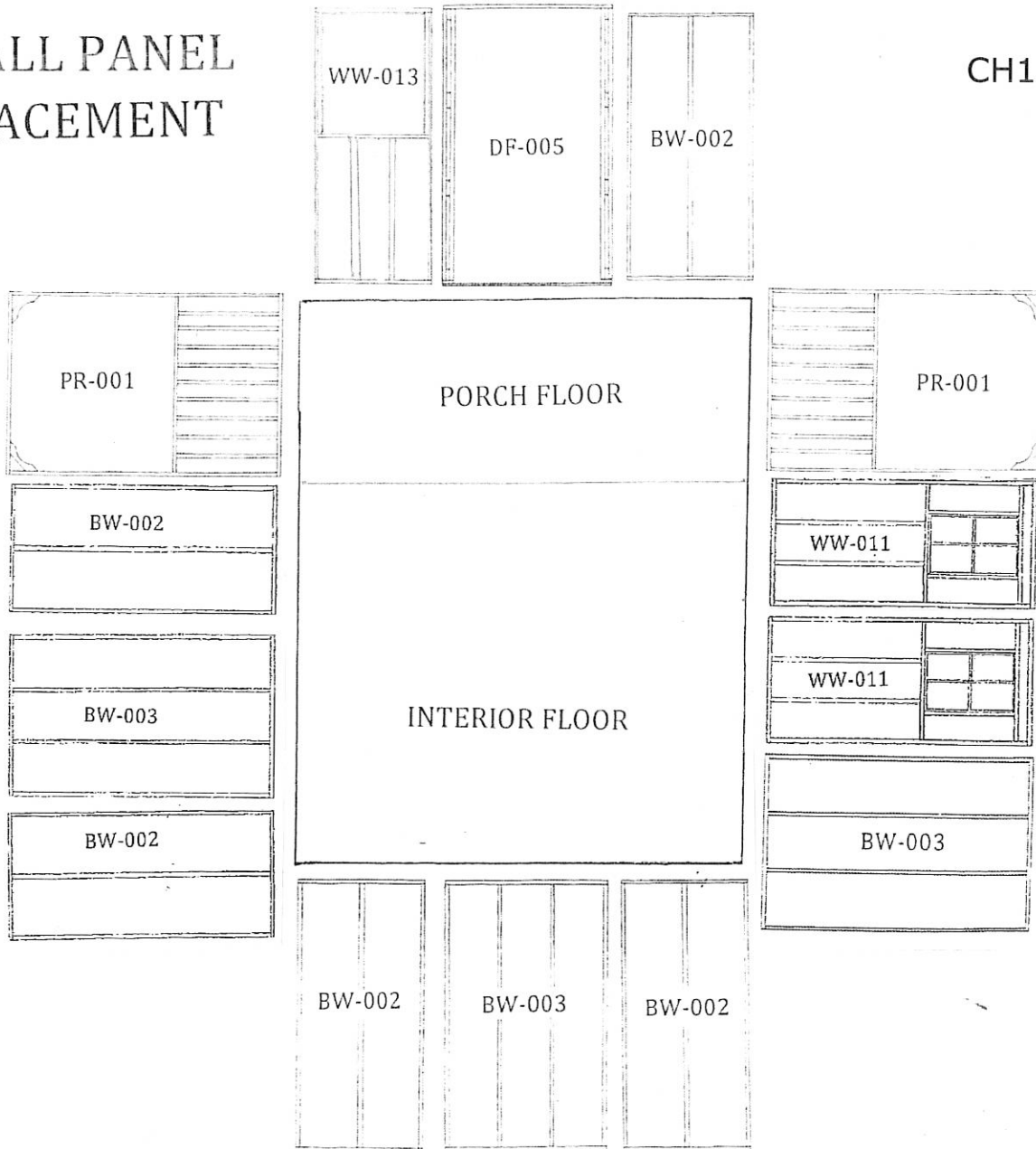


PART #	DESCRIPTION	DIMENSIONS (where app.)	# OF PCS
<b>ACCESSORIES</b>			
P-H-PLAQL	peak CS plaque	peak CS plaque	1
P-H-PLAQLNL	peak plaque	peak plaque	1
P-WIN-015	slide down window	34 1/4 x 26 1/2	1
P-1640F	window sill	1 x 6 x 40 7/16	1
P-WSS-001	sill supports	3 x 5	2
P-2275C	slide down window track	2 x 2 x 75 1/4	2
P-FW-001	window box	window box	2
P-SH-001	shutters	shutters	4
<b>FASTENERS</b>			
P-H-NL1.125	nails	1 1/8" nails	40
P-H-NL1.75	nails	1 3/4" nails	400
P-H-NL2	nails	2" nails	75
P-H-SC2	2" screws	2" Screws	250
P-H-SC3	3" screw	3 " Screws	500
<b>DOOR AND HARDWARE</b>			
C-DR-003	Dutch door	Dutch door	1
P-H-THING6	T-Hinges	6 " T-hinges	4
P-H-BBLT4	barrel bolt	4 " barrel bolt	3
P-H-DHAND	door handle	door handle	1
P-H-BHAND	window handle	window handle	1
P-H-HASP	hasp	hasp	1

Instruction manual, questionnaire and driver bit

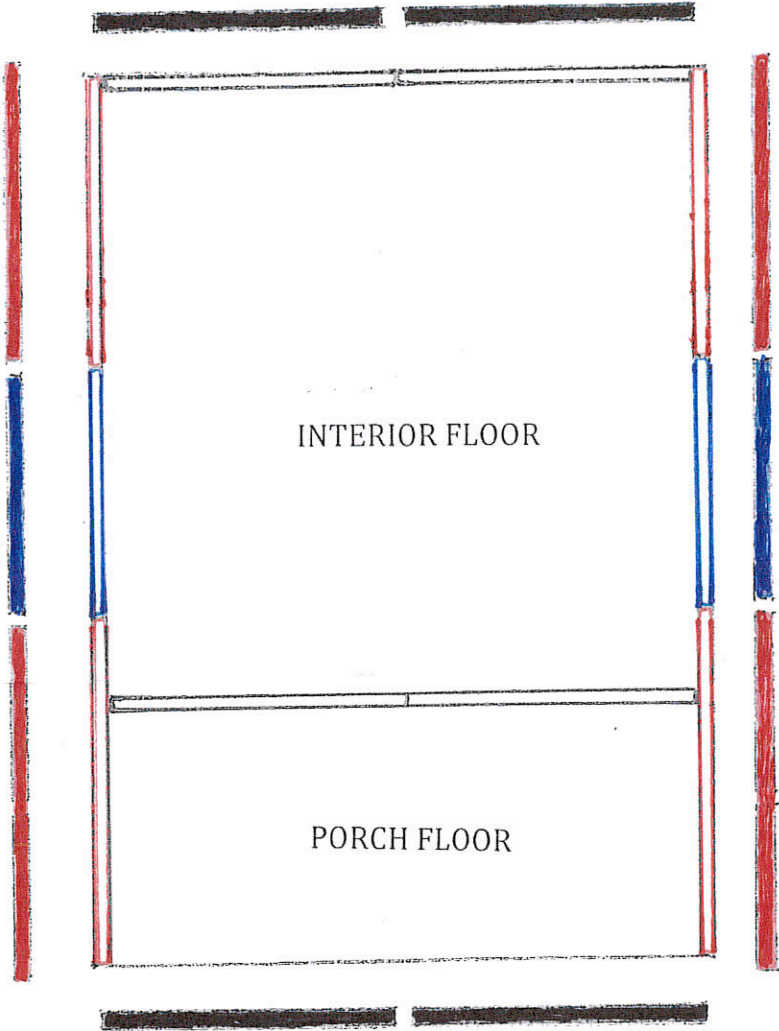
# WALL PANEL PLACEMENT

CH1014

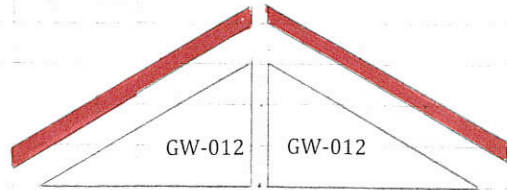


PART #	DESCRIPTION	DIMENSIONS (where app.)	# OF PCS	CODE
<b>WALL PARTS</b>				
P-2334G	header	2 x 3 x 34 1/2	5	not shown
P-2346G	header	2 x 3 x 46 1/2	3	not shown
C-BW-002	wall panel	34 1/2 wall panel	5	BW-002
C-BW-003	wall panel	46 1/2 wall panel	3	BW-003
C-DF-005	single door frame	46 1/2 door frame	1	DF-005
C-WW-013	window wall	34 1/2 slide down window	1	WW-013
C-WW-011	window wall	34 1/2 small awning window	2	WW-011
C-PR-001	porch wall	46 1/2 x 73 /34	2	PR-001

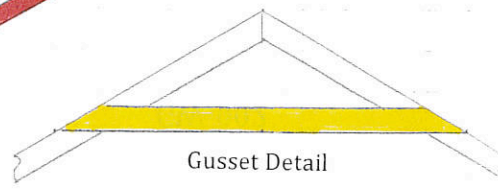
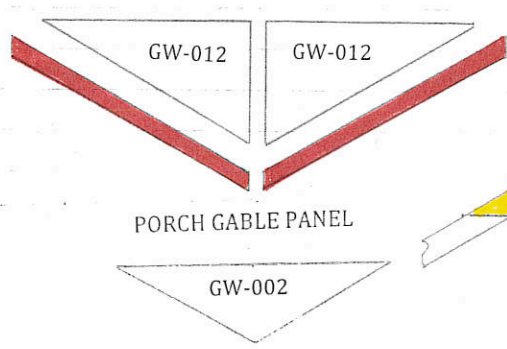
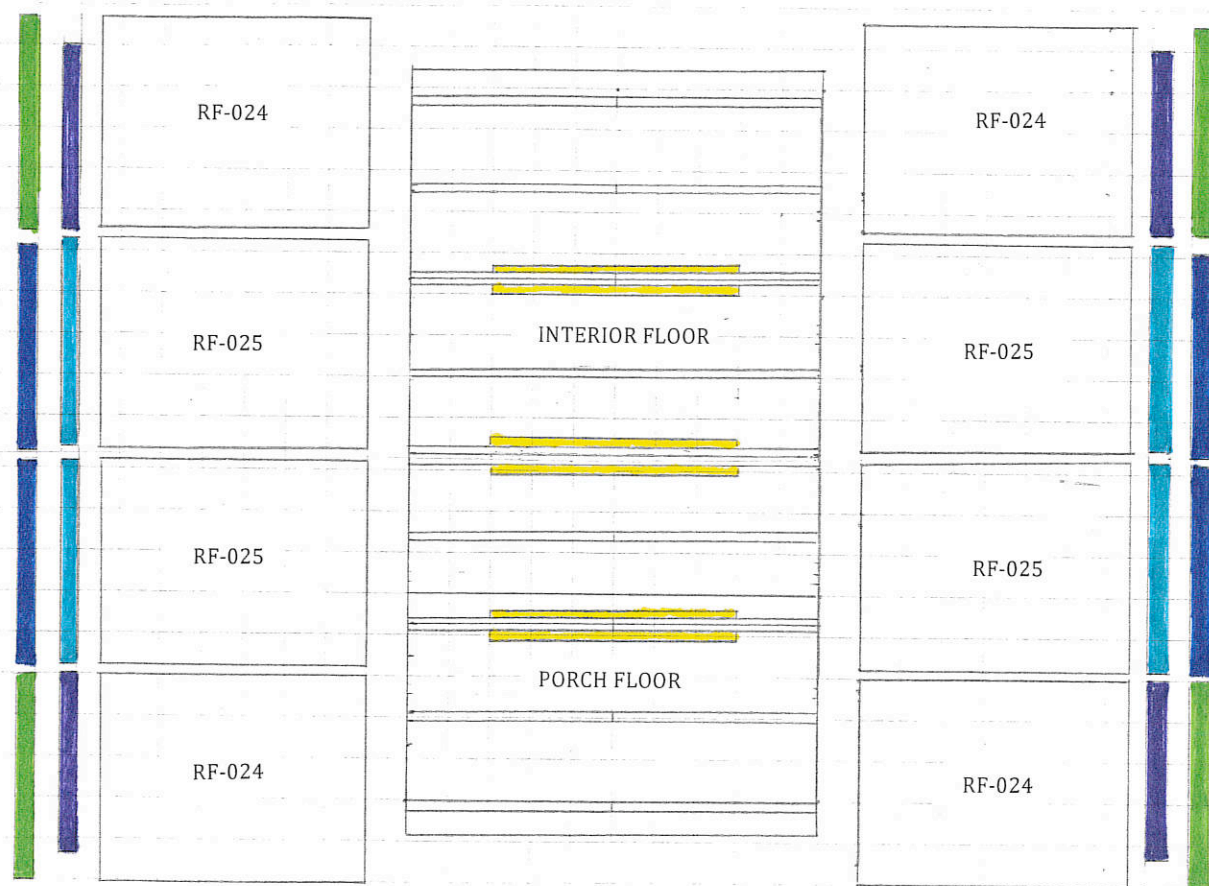
# TOP PLATE PLACEMENT



PART #	DESCRIPTION	DIMENSIONS (where app.)	# OF PCS	CODE
<b>Top Plates</b>				
P-2355C	top plates	2 x 3 x 55 1/4	4	
P-2360C	top plates	2 x 3 x 60 1/4	4	
P-2346G	top plates	2 x 3 x 46 1/2	2	
P-2355C	top plate location	2 x 3 x 55 1/4	4	
P-2360C	top plate location	2 x 3 x 60 1/4	4	
P-2346G	top plate location	2 x 3 x 46 1/2	2	



10X14



PART #	DESCRIPTION	DIMENSIONS (where app.)	# OF PCS	CODE
<b>ROOF PARTS (WOOD SHINGLES)</b>				
P-2371KYb	gusset	2 x 3 x 71 3/4	6	
C-GW-012	gable wall	25 3/4 x 67 1/8	4	GW-012
C-GW-002	gable wall	16 1/2 x 69	1	GW-002
C-RF-024	roof panel	42 3/4 x 67 1/8	4	RF-024
C-RF-025	roof panel	46 1/2 x 67 1/8	4	RF-025
P-B-G446G	soffits	1/2 x 4 x 46 1/2	4	
P-B-G437	soffits	1/2 x 4 x 37	4	
P-1442	fascia	1 x 4 x 42	4	
P-1446G	fascia	1 X 4 X 46 1/2	4	
P-1471YA	gable fascia	1 x 4 x 71	4	
P-H-RFLT12	roofing felt	1 ft x 5 ft	10 sq ft	not shown
P-H-RCAP24	ridge caps	24"	24	not shown
P-H-MFLASS	roof flashing	3" x 12"	36	not shown

# TRIM DETAIL

CH1014



PART #	DESCRIPTION	DIMENSIONS (where app.)	# OF PCS	CODE
<b>TRIM PARTS</b>				
P-1226	gable trim	1 x 2 x 26	1	
P-1279C	trim	1 x 2 x 79 1/4	4	
P-1280G	trim	1 x 2 x 80 1/2	4	
P-13C79C	trim	1 x 3 1/4 x 79 1/4	4	
P-B-G445	skirting	1/2 x 4 x 45	2	
P-B-G645	skirting	1/2 x 6 x 45	4	
P-B-G633	skirting	1/2 x 6 x 33	8	
P-B-G433	skirting	1/2 x 4 x 33	4	
P-14B47C	porch skirting	1 x 4 1/8 x 47 1/4	2	
P-14B46G	porch skirting	1 x 4 1/8 x 46 1/2	1	
P14B35C	porch skirting	1 x 4 1/8 x 35 1/4	2	
P-1312	porch trim	1 x 3 x 12	2	