

No. 99873-4-5N
Maple Leaf Yoke Pullover
Sizes: 6, 8, 10, 12



mary maxim[®]
EXCLUSIVE NEEDLEWORK and CRAFTS Inc.

No. 99873-4-5N
Maple Leaf Yoke Pullover
Sizes: 6, 8, 10, 12

mary maxim[®]
EXCLUSIVE NEEDLEWORK and CRAFTS

Materials: Canadiana Worsted Weight yarn	Size 6	Sizes 8-10	Size 12
Main Color Red	3 balls	4 balls	5 balls
Contrast Color White	1 ball	1 ball	1 ball

Suggested Needles:

One set of Double Pointed Needles size 6 US, (Canadian size 8, Metric size 4.00 mm)
One set of Double Pointed Needles size 7 US, (Canadian size 7, Metric size 4.50 mm)
One 24" circular needle size 6 US, (Canadian 24" size 8, Metric 60 cm size 4.00 mm)
One 24" circular needle size 7 US, (Canadian 24" size 7, Metric 60 cm size 4.50 mm)

Measurements:

Finished Chest Measurement: 28(30, 34, 36)" [71(76, 86, 91) cm]
Length from Back Neck: 17½(18, 18½, 19)" [44(45, 47, 48) cm]
Sleeve Length: 11(12, 13, 14)" [28(31, 33, 36) cm]

TO SAVE TIME, TAKE TIME TO CHECK GAUGE

Gauge or Tension: 20 sts and 26 rows to 4" [10 cm] measured over Stocking stitch using **suggested larger** needles or any size needles which will give the correct stitch gauge or tension.

Wash in cool water, gentle cycle. Dry using low heat, maximum 5 minutes, remove and lay flat to dry.

Abbreviations: MC, Main Color; CC, Contrast Color; k, knit; p, purl; St st, Stocking stitch; sl, slip; st, stitch; sts, stitches; beg, begin or beginning; inc, increase, increasing; dec, decrease, decreasing; ", inches; yds, yards; gm, gram; cm, centimeters; mm, millimeter; rem, remain or remaining; rep, repeat; yo, yarn over needle; tog, together; rnd(s), round(s); DPN, double pointed needles.

Note: Garment is worked in one piece to armholes.

Body: Using MC, and smaller circular needle, cast on 140(150, 170, 180) sts. Join in round, taking care that sts are not twisted. Place marker on first st to indicate beg of rnds.

Work in k1, p1 ribbing for 2" [5 cm].

Change to larger circular needle and work in St st - every rnd knit until piece measures 11(11½, 12, 12½)" [28(29, 31, 32) cm] from cast on edge.

Next Rnd: K4, slip these 4 sts and last 4 sts of previous rnd onto first st holder for armhole - 8 sts; k 70(75, 85, 90) sts then slip last 8 sts worked onto second st holder for armhole; knit to end of rnd - 62(67, 77, 82) sts rem on front and back. Do Not Break yarn.

Sleeves: Using smaller DPN and MC, cast on 36(36, 46, 46) sts. Divide these sts onto 3 needles, join in rnd, taking care that sts are not twisted. Place a marker on first st to indicate beg of rnd. Work in k1, p1 ribbing for 2" [5 cm] and inc 4 sts evenly across last rib row - 40(40, 50, 50) sts. Change to larger DPN and work in St st, inc one st

at each end of the next rnd, then every following 6th rnd until there are 56(58, 60, 64) sts.

Now work even in St st until sleeve measures 11(12, 13, 14)" [28(31, 33, 36) cm] from cast on edge.

Next Rnd: K4, slip these 4 sts and last 4 sts of previous rnd onto st holder. Break yarn leaving a 12" [30 cm] tail for grafting.

Leave rem 48(50, 52, 56) sts on st holder.

Yoke: Using larger circular needle and MC yarn, k 48(50, 52, 56) sts of first sleeve, k 62(67, 77, 82) sts of Body, k 48(50, 52, 56) sts of second sleeve, k 62(67, 77, 82) sts of Body - 220(234, 258, 276) sts on needle.

Mark last st of rnd. Knit 2 rnds.

Next Rnd: Knit, dec 4(0, 6, 6) sts evenly around - 216(234, 252, 270) sts on needle.

Next Rnd: Knit.

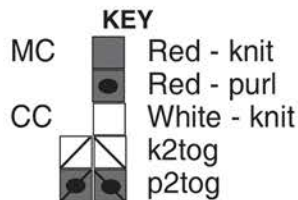
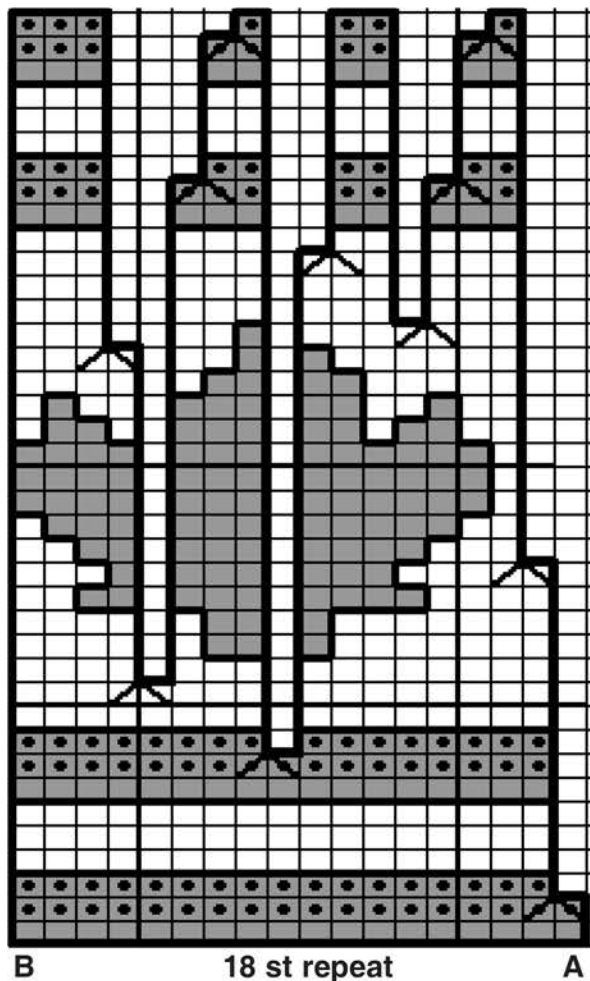
Now beg with Rnd 1 of Chart 1, reading all rnds from right to left, rep from A to B 12(13, 14, 15) times around until 39 rnds of chart have been completed - 84(91, 98, 105) sts rem.

Next Rnd: Using MC, knit one rnd, dec 4(1, 8, 7) sts evenly across - 80(90, 90, 98) sts.

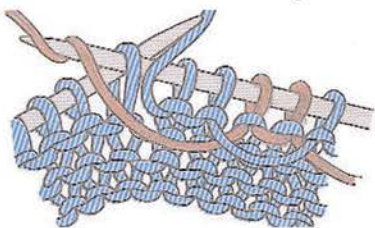
Neckband: Divide sts onto smaller DPN and work in k1, p1 ribbing for 3" [7.5 cm]. Cast off loosely in ribbing so garment will fit over head.

To Complete: Fold neckband in half to inside and slip st loosely in place. Graft sts of sleeves at underarms.

CHART 1



How to Work Design



Fair Isle Stranding: This method is used when only a few stitches of 2 or more colors are worked at one time to make design. Colors not in use are carried or woven along on wrong side as follows: For Knit Rows: Color in use is held in right hand in normal way, color carried or woven at back is held taut over middle finger of left hand, knit st in normal way. Still holding color not in use over middle finger, insert needle in next st under color being carried, knit st allowing color being carried to slip off needle and pulling color in use through st onto right hand needle. For Purl Rows: Hold yarn in the same manner, working under one st and over next with color being carried.

How to Check Gauge: Using the size of needles suggested in the Gauge paragraph given in pattern, make a small swatch in Stocking stitch or Pattern stitch (according to tension given).

Cast on the number of sts needed to make a swatch 5" [12 cm] wide (a swatch this big gives a more accurate measurement). Then work in Stocking stitch or Pattern stitch until the swatch measures 5" [12 cm] long. Now slip these sts off the needle onto a length of scrap yarn. Lay the swatch out flat, but **DO NOT STRETCH IT!** Do not cast off or check measurements while still on the needles as this could distort the sts.

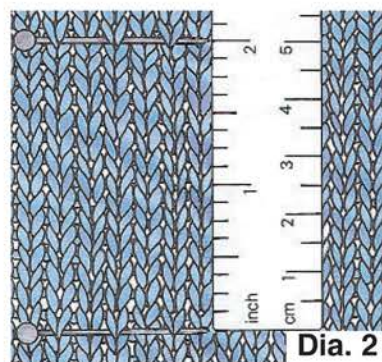
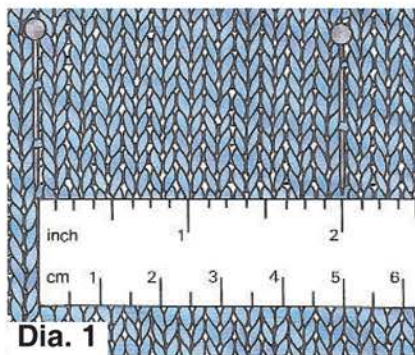
Now with right side facing, place pins 2 or 4" [5 or 10 cm] apart (as shown in dia. 1), then count the number of sts between the pins.

This will give the st tension.

Repeat this to count the number of rows (place pins as shown in dia.2).

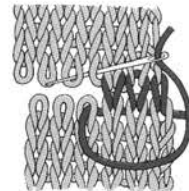
If there are less sts than required by pattern, try using smaller size needles and make another tension swatch. If there are more sts than required, try using larger size needles and make another tension swatch.

The tension must be totally accurate! Just a half a st difference every 4" [10 cm] can make a big difference in the finished measurement, be it smaller or larger. This is especially noticeable when using bulkier yarns.



WEAVING, OR GRAFTING STITCH: To join two sections of knitting without a ridge or seam, divide the stitches onto two needles evenly with the wrong sides of work facing one another. Thread a needle with a length of yarn.

1. Insert needle into first stitch on front needle as if to knit, slip off needle.
 2. Insert needle into second stitch on front needle as if to purl, leave on needle.
 3. Insert needle into first stitch on back needle as if to purl, slip off needle.
 4. Insert needle into second stitch on back needle as if to knit, leave on needle.
- Repeat these 4 steps until all stitches have been worked. Fasten off.



EVERY EFFORT HAS BEEN MADE TO HAVE THE DIRECTIONS CONTAINED IN THIS PATTERN ACCURATE AND COMPLETE; HOWEVER, WE CANNOT BE RESPONSIBLE FOR MISINTERPRETATION, VARIANCE OR ERRORS IN WORKMANSHIP OF THE INDIVIDUAL.

"Reproduction of this pattern in any form (including photostat) is protected by copyright. Any infringement will lead to prosecution."

mary maxim

Yarn made in Canada

2001 HOLLAND AVE., PORT HURON, MI 48060
75 SCOTT AVE., PARIS ONTARIO, CANADA N3L 3G5