

SHOPPING LIST

Yarn (Worsted Weight)



Northland Worsted

[3.5 ounces, 200 yards

(100 grams, 183 meters) per ball]:

Cream 1 ball

35 yard (32 meter) pieces

Charcoal 2 pieces

Red 1 piece

Knitting Needles

Size 6 (4.00 mm)

Size 7 (4.50 mm)

or size needed for gauge



tog together
sl slip
M marker
MC Main Color

Hat Graph in St st (one row k, one row p) as follows:

Row 1: (right side) Following Row 1 of Graph, work 25(27) st rep 3 times across.

Row 2: Following Row 2 of Graph, work 25(27) st rep 3 times across.

Continue in this manner, working design in "Colored Pattern" knitting method, using separate balls of color for each section of the design.

Remember always to cross yarns to avoid leaving a hole in the knitting. When 27 rows of Graph have been completed, continue as follows:

Using Cream only, purl one row, dec 5(1) sts evenly across - 70(80) sts.

To Shape Crown:

Row 1: (right side) *K5(6), k2tog; rep from * to end - 60(70) sts.

Row 2 and every alternate row: Purl.

Row 3: *K4(5), k2tog; rep from * to end - 50(60) sts.

INSTRUCTIONS

Hat:

Using smaller needles and Cream, cast on 85(89) sts and work in ribbing as follows:

Row 1: (right side) K1, *p2, k2; rep from * to end.

Row 2: *P2, k2; rep from * to last st, p1. Repeat these 2 rows once more.

Change to Red and rep Rows 1 and 2 once.

Change to Cream and continue ribbing until band measures 4.5" [11.5 cm], ending after a Row 1 and dec 10(8) sts evenly across - 75(81) sts.

Now change to larger needles and beg with a k row, proceed to follow

SIZE INFORMATION

Hat Circumference:

16(17)" [40.5(43) cm]

GAUGE INFORMATION

20 sts and 26 rows to 4" [10 cm]

measured over Stocking stitch using **suggested larger** needles or any size needles which will give the correct gauge.

STITCH GUIDE

st(s) stitch(es)
cm centimeters
mm millimeters
k knit
p purl
rep repeat or repeating
inc increase or increasing
beg begin or beginning
dec decrease or decreasing

Row 5: *K3(4), k2tog; rep from * to end - 40(50) sts.

Continue dec 10 sts in this manner, having one st less in each rep on every right side row until 10 sts rem.

Cut yarn leaving a long tail for sewing.

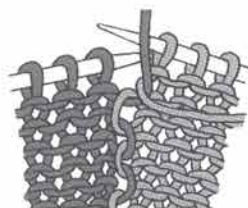
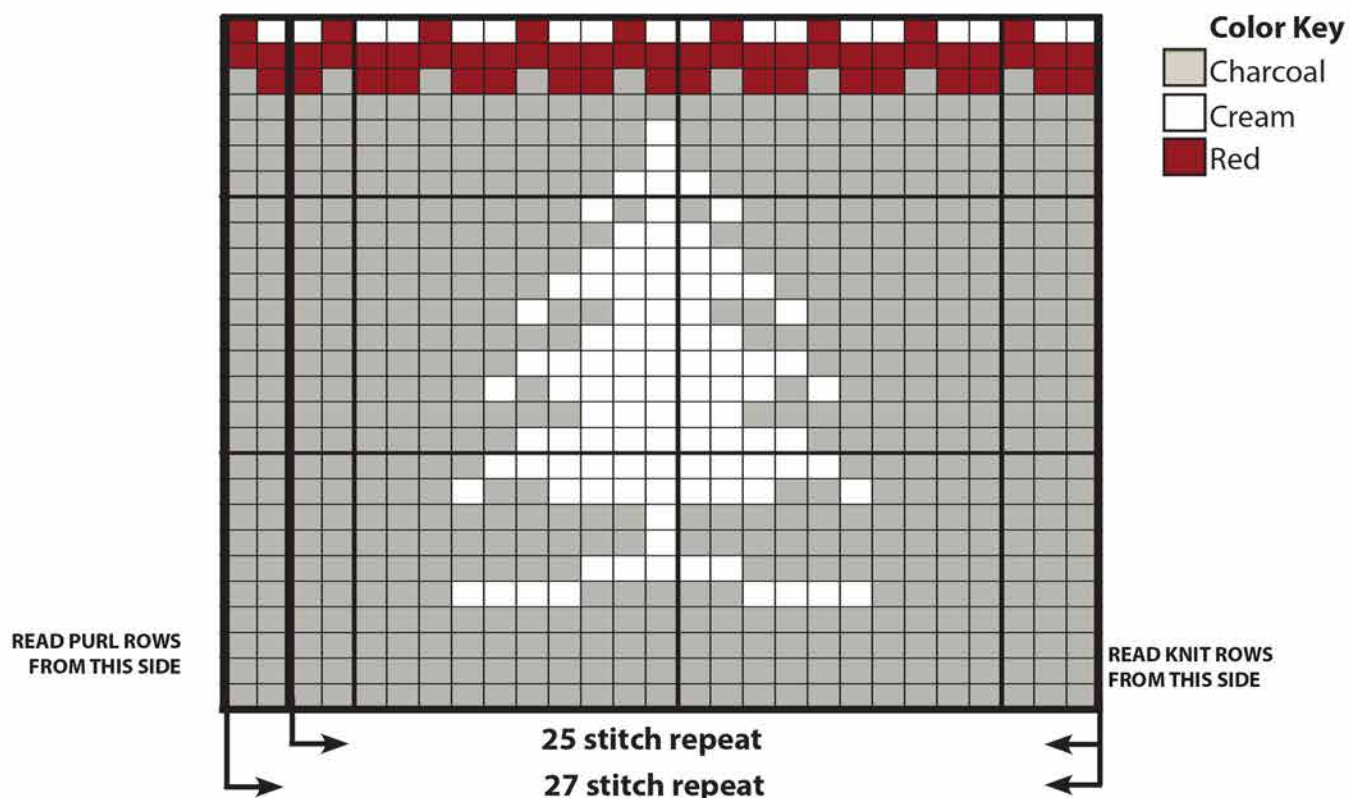
Thread tail through rem sts, draw up tightly and fasten off securely, but do not cut tail.

Using tails, sew back seam of hat, taking care with seam in ribbing as band will be turned in half to outside.

Pompom: Using a strand of all 3 colors, wrap around 3 fingers about 35 times. Remove from fingers carefully. Wrap a long piece of Cream around center of wraps and knot securely in place, leaving tails for sewing. Cut loops on both ends. Trim to form a round pompom.

Using tails, sew securely to top of Hat.

HAT GRAPH



Colored Pattern Knitting: This method is used for large areas of each color and background, using small balls of color for each area. Work required number of sts, drop color in use to be picked up on next row, bring new color under and over last color, thus avoiding a hole in the knitting.

We have made every effort to ensure that these instructions are accurate and complete. We cannot be responsible for misinterpretation or errors in individual work. Any corrections that are discovered, will be posted on our website.

Copyright © 2014 by Mary Maxim, Inc. All rights reserved. This publication is protected under federal copyright laws. Reproduction or distribution of this publication or any other Mary Maxim publication, including publications which are out of print, is prohibited unless specifically authorized. This includes, but is not limited to, any form of reproduction or distribution on or through the Internet, including posting, scanning or e-mail transmission.

2001 Holland Ave., Port Huron, MI 48060;
75 Scott Ave., Paris, Ontario, CANADA N3L 3G5

Yarn made in USA