

No. 98150N

Santa Stockings (makes 2)

Size: 20" [51 cm] long

Materials: Mary Maxim Worsted Weight Yarn

Main Color	Blue	2 balls
Contrast Color 1	White	1 ball
Contrast Color	Green	35 yards [32 m]
Contrast Color	Red	35 yards [32 m]
Contrast Color	Brown	35 yards [32 m]
Contrast Color	Yellow	35 yards [32 m]
Contrast Color	Black	35 yards [32 m]
Contrast Color	Pink	35 yards [32 m]

Suggested Needles:

Size 8 US, (Canadian size 6, Metric size 5.00 mm)

TO SAVE TIME, TAKE TIME TO CHECK GAUGE

Gauge: 18 sts and 24 rows to 4" [10 cm], measured over Stocking stitch using **suggested** needles or any size needles which will give the correct stitch gauge.

Follow washing and drying instructions printed on yarn label for completed stockings.

Abbreviations: MC, Main Color; CC, Contrast Color; k, knit; p, purl; st, stitch; sts, stitches; St st, Stocking stitch; " inches; cm, centimeter; mm, millimeter; beg, begin or beginning; inc, increase, increasing; dec, decrease, decreasing; rem, remain or remaining; rep, repeat; tog, together; sl, slip; pss0, pass slipped stitch over knit stitch; PM, place marker; M, marker.

Stockings: (make 2)

Cuff: Using MC, cast on 56 sts.

Work 10 rows in k2, p2 ribbing, inc one st in center of last rib row - 57 sts.

Now beg with a k row, proceed to follow Graph in St st, working design in "Color Pattern" knitting method, using small balls of color for each section of the design. Remember always to cross yarns when changing colors to avoid leaving a hole in the knitting. Every square on the graph represents a stitch. Changes in colors are shown by different symbols. Follow graph from right to left for k rows and from left to right for p rows. When graph shows one square less, decrease one st.

To Decrease: K2tog at beg of the row and sl 1, k1, pss0 at the end of row.

Work graph until 49 sts rem. Break yarn, leaving an end long enough to sew back seam.

Divide for Heel and Instep: With right side of work facing, slip first 12 sts onto st holder for right half of heel, slip next 25 sts onto another st holder for instep, slip last 12 sts onto other needle for left half of heel.

Left Half of Heel: Using CC 1 and with wrong side of work facing, p one row.

Now work heel as follows:

Row 1: Sl 1, k11.

Row 2: Purl.

Repeat these 2 rows 7 times more, then Row 1 once - 18 heel rows.

To Turn Heel: Work short rows as follows:

P2, p2tog, p1, turn, leave rem sts on needle;

sl 1, k3, turn;

p3, p2tog, p1, turn;

sl 1, k4, turn;

p4, p2tog, p1, turn;

sl 1, k5, turn;

p5, p2tog, p1, turn;

sl 1, k6, turn; p6, p2tog.

Break yarn and place rem 7 sts on st holder.

Right Half of Heel:

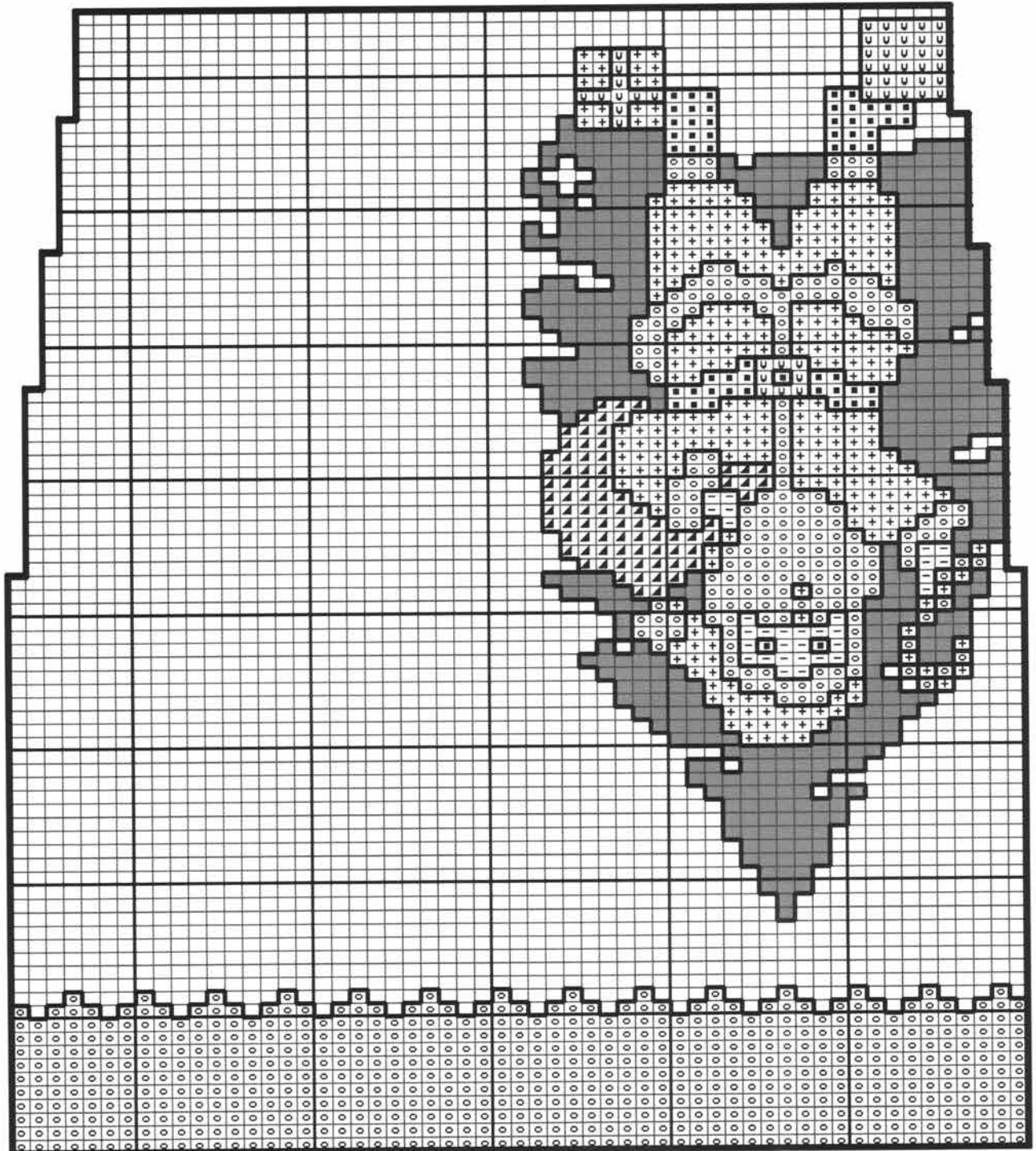
With right side of work facing, join CC 1 to first 12 sts, beg at outer edge and continue as follows:

Row 1: K 12.

Row 2: Sl 1, p 11.



Graph



READ PURL ROWS FROM THIS SIDE

READ KNIT ROWS FROM THIS SIDE

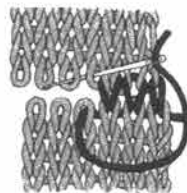
KNIT BAND BEFORE STARTING GRAPH

COLOR KEY

- | | | |
|------|---|--------|
| MC | □ | Blue |
| CC 1 | ○ | White |
| CC | ■ | Green |
| CC | + | Red |
| CC | - | Pink |
| CC | ▲ | Brown |
| CC | ∩ | Yellow |
| CC | ■ | Black |

WEAVING, OR GRAFTING STITCH: To join two sections of knitting without a ridge or seam, divide the stitches onto two needles evenly with the wrong sides of work facing one another. Thread a needle with a length of yarn.

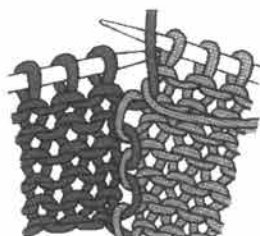
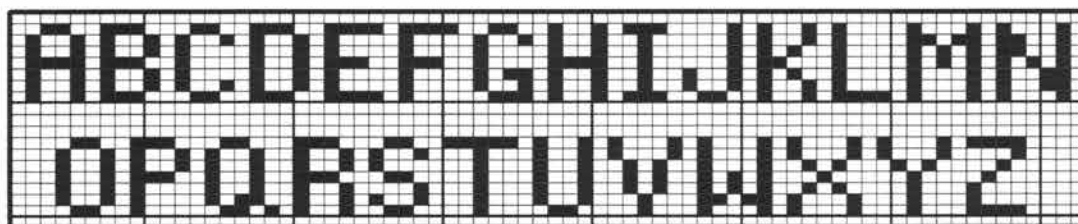
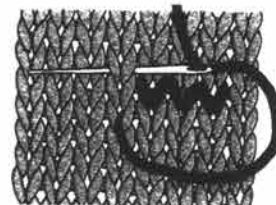
1. Insert needle into first stitch on front needle as if to knit, slip off needle.
 2. Insert needle into second stitch on front needle as if to purl, leave on needle.
 3. Insert needle into first stitch on back needle as if to purl, slip off needle.
 4. Insert needle into second stitch on back needle as if to knit, leave on needle.
- Repeat these 4 steps until all stitches have been worked. Fasten off.



EMBROIDERY

Duplicate Stitch: Thread needle with yarn.

1. Insert needle from wrong side into base of a V of Stockinette stitch.
 2. Now insert needle from right to left behind the 2 loops above.
 3. Insert needle into same spot as 1. Work from right to left whenever possible.
- Work from bottom to top of design.



How to Work Design

Colored Pattern Knitting: This method is used for large areas of each color and background, using small balls of color for each area. Work required number of sts, drop color in use to be picked up on next row, bring new color under and over last color, thus avoiding a hole in the knitting.

NOTE: Every square on the graph represents a stitch. Changes in color are shown by different symbols. Follow graph from right to left for knit rows and left to right for purl rows. When graph shows one square less, decrease one stitch. Decreases of more than one stitch must be cast off or placed on a stitch holder as stated in pattern instructions. Ribbing is not included on the graph, but is explained in the instructions.

Repeat these 2 rows 8 times more - 18 heel rows.

To Turn Heel: Continue as follows:

K2, sl 1, k1, pssso, k1, turn;

sl 1, p3, turn;

k3, sl 1, k1, pssso, k1, turn;

sl 1, p4, turn;

k4, sl 1, k1, pssso, k1, turn;

sl 1, p5, turn;

k5, sl 1, k1, pssso, k1, turn;

sl 1, p6, turn; k6, sl 1, k1, pssso - 7 sts rem.

Now using MC, pick up and k9 sts along inner side edge of right half of heel, k 25 sts from st holder, pick up and k9 sts along inner side edge of left half of heel, k7 sts from left heel st holder - 57 sts.

Gusset and Instep:

Row 1: P 16, PM on needle, p 25, PM on needle, p 16.

Row 2: K to 2 sts before marker, k2tog, sl M, k 25, sl M, sl 1, k1, pssso, k to end.

Row 3 and every alternate row: Purl.

Continue in this manner, dec one st before the first marker and one st after the second marker, until 45 sts rem. Continue in St st for 23 rows, thus ending after a p row - about 7" [18 cm] from tip of heel.

Next Row: Knit, dec 3 sts evenly across - 42 sts.

Next Row: Purl.

Break MC after last row.

To Shape Toe: Using CC 1, continue as follows:

Row 1: With right side facing, k8, k2tog, k2, sl 1, k1, pssso, k 14, k2tog, k2, sl 1, k1, pssso, k8 - 38 sts.

Row 2 and every alternate row: Purl.

Row 3: K7, k2tog, k2, sl 1, k1, pssso, k 12, k2tog, k2, sl 1, k1, pssso, k7 - 34 sts.

Row 5: K6, k2tog, k2, sl 1, k1, pssso, k10, k2tog, k2, sl 1, k1, pssso, k6 - 30 sts.

Row 7: K5, k2tog, k2, sl 1, k1, pssso, k8, k2tog, k2, sl 1, k1, pssso, k5 - 26 sts.

Row 9: K4, k2tog, k2, sl 1, k1, pssso, k6, k2tog, k2, sl 1, k1, pssso, k4 - 22 sts.

Row 11: K3, k2tog, k2, sl 1, k1, pssso, k4, k2tog, k2, sl 1, k1, pssso, k3 - 18 sts.

Row 13: K2, k2tog, k2, sl 1, k1, pssso, k2, k2tog, k2, sl 1, k1, pssso, k2 - 14 sts.

After the 13th row has been completed, with wrong side of work facing, place first 3 sts onto st holder, slip next 7 sts onto needle not in use, slip last 4 sts onto another st holder. Now beg with the 3rd st on first st holder, slip 3 sts onto 2nd needle, k4 sts from 2nd st holder. There are now 7 sts on each of 2 needles, ready for weaving or grafting according to instructions.

To Complete: Sew all seams with matching yarn. Weave in all ends.

Hanger: Using MC, cast on 12 sts, then cast off knitwise. Fold piece in half and sew ends together.

Sew seamed end to inside of stocking, at side seam, even with beg of band.

Embroidery: If desired, using alphabet provided, duplicate st name on 10 row white border across top of stocking.

Every effort has been made to have the directions contained in this pattern accurate and complete; however, we cannot be responsible for misinterpretation or errors of workmanship.

Reproduction of this pattern in any form, is protected by copyright. Any infringement will lead to prosecution.

mary maxim

2001 HOLLAND AVE., PORT HURON, MI 48060

75 SCOTT AVE., PARIS ONTARIO, CANADA N3L 3G5

Yarn Imported