

mary maxim

O' Canada Lapghan

No. 97267N

Size: 37 x 38.5"

■ ■ ■ ■ □ INTERMEDIATE



Stitch Guide

- White
- Red
- Black Ragg
- Black
- Purl on right side rows, knit on wrong side rows.

Remainder of graph is worked in Stocking stitch - knit on right side rows, purl on wrong side rows.

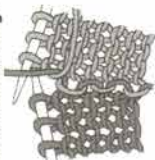
Optional Embroidery:

- If desired, using Black and Duplicate st (shown below), work stem on Leaf as indicated on Graph.

Duplicate Stitch



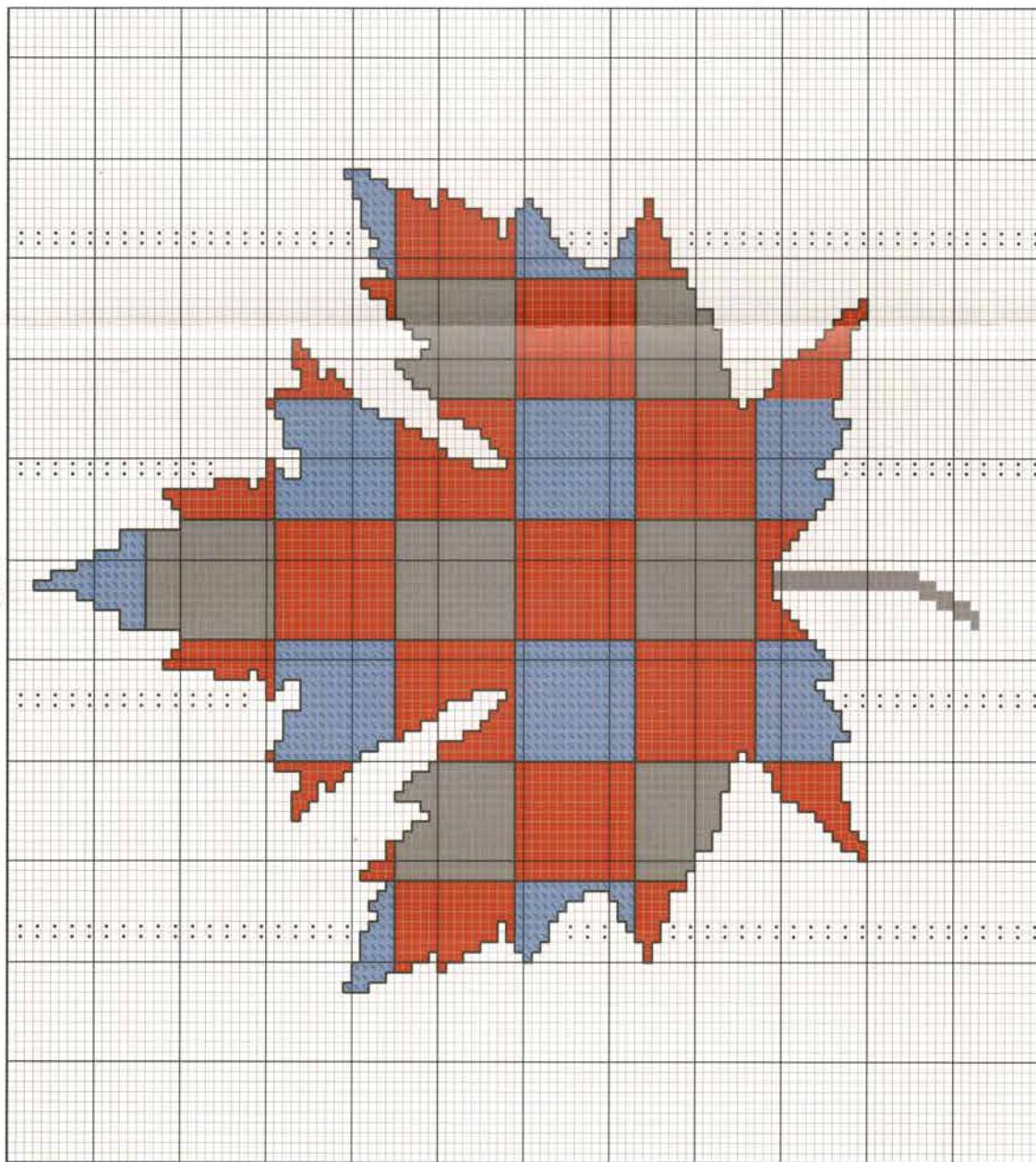
How to Work Design



Colored Pattern Knitting: This method is used for large areas of each color and background, using small balls of color for each area. Work required number of sts, drop color in use to be picked up on next row, bring new color under and over last color, thus avoiding a hole in the knitting.

NOTE: Every square on the graph represents a stitch. Changes in color and texture are shown by different symbols. Follow graph from right to left for right side rows and left to right for wrong side rows.

GRAPH



READ RIGHT SIDE ROWS FROM THIS SIDE

READ WRONG SIDE ROWS FROM THIS SIDE

SHOPPING LIST

Yarn (Worsted Weight)



Mary Maxim Starlette
[3.5 ounces, 180 yards
(100 grams, 165 meters) per ball]:

- White (MC) 2 balls
- Red (CC1) 4 balls
- Black (CC2) 1 ball

Mary Maxim Starlette Ragg
[3.5 ounces, 216 yards

(100 grams, 198 meters) per ball]:

- Black Ragg (CC3) 1 ball

Knitting Needles:

32" (80 cm) Circular Needle

- Size 8 (5.00 mm)
- Size 9 (5.50 mm)

or size needed for gauge

SIZE INFORMATION

Finished: 37 x 38.5" [94 x 98 cm]

GAUGE INFORMATION

16 sts and 21 rows to 4" [10 cm]

measured over Stocking stitch using **suggested larger** needle or any size needle which will give the correct gauge.

STITCH GUIDE

- st(s)** stitch(es)
- cm** centimeter
- k** knit
- p** purl

- MC** Main Color
- sl** slip
- CC** Contrast Color
- rep** repeat or repeating
- rem** remain or remaining
- beg** begin or beginning
- St st** Stocking stitch

INSTRUCTIONS

Using smaller needle and CC1, cast on 155 sts and knit 33 rows.

Next Row: (*wrong side*) K 20, place these 20 sts on st holder for Left Border, k to end, place last 20 sts on st holder for Right Border.

Do Not cut yarn.

Now change to larger needle and MC, proceed to work over center 115 sts as follows:

Row 1: (*right side*) K 22, p2, [k 21, p2] 3 times, k 22.

Row 2: P 22, k2, [p 21, k2] 3 times, p 22.

Repeat these last 2 rows for pattern until work measures 1.5" [4 cm] from color change.

Now beg with a k row, proceed to follow Graph in St st (k on right side rows, p on wrong side rows), AND AT THE SAME TIME, continue to work pattern sts as indicated.

Work Maple Leaf in "Colored Pattern" knitting method, using small balls of color for each section of the design. Remember always to cross yarns when changing colors to avoid leaving a hole in the knitting.

Continue in this manner until 118 rows of Graph have been completed. Now using MC only, continue to work pattern sts as set for a further 4" [10 cm], ending after a wrong side row. Leave these sts for the moment.

Right Border:

Using smaller needle, with right side facing, using CC1 attached, k 20 sts from st holder. Now continue in Garter st (every row k), until Border measures same length as Center, stretching slightly and ending after a wrong side row. Leave these 20 sts on a st holder. Do Not cut yarn.

Hint: You may wish to sew Border to side of center sts to determine if length of Border needs to be adjusted.

Left Border:

Using smaller needle and CC1, with right side facing, k 20 sts from st holder. Complete as for Right Border. Cut yarn.

Top Border:

Using smaller needle and CC1, with right side facing, k 20 sts from Right Border, k 115 sts from Center, k 20 sts from Left Border. (155 sts)

Knit 33 rows.

Cast off loosely knitwise.

If required, sew side borders to center. Weave in all ends.

We have made every effort to ensure that these instructions are accurate and complete. We cannot be responsible for misinterpretation or errors in individual work. Any corrections that are discovered, will be posted on our website.

Copyright © 2017 by Mary Maxim, Inc.. All rights reserved. This publication is protected under federal copyright laws. Reproduction or distribution of this publication or any other Mary Maxim publication, including publications which are out of print, is prohibited unless specifically authorized. This includes, but is not limited to, any form of reproduction or distribution on or through the Internet, including posting, scanning or e-mail transmission.

2001 Holland Ave., Port Huron, MI 48060;
75 Scott Ave., Paris, Ontario, CANADA N3L 3G5

Yarn Imported