

Instruction Manual



Enjoy it.

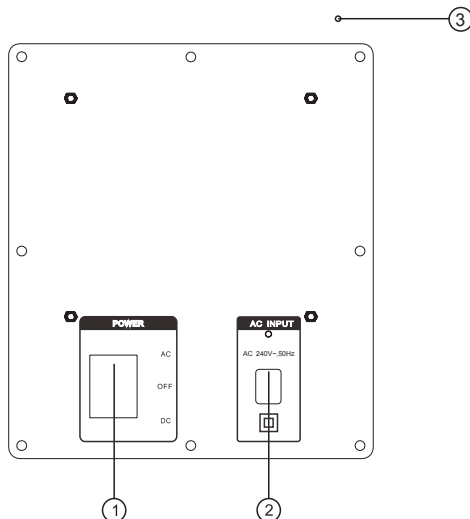
VOLCANO 100

DJ Pro | Karaoke | Bluetooth | USB

Caution: Read this before operating your unit.

- 1 To assure the finest performance, please read this manual carefully. Keep it in a safe place for future reference.
- 2 Install this sound system in a well ventilated, cool, dry, clean place - away from direct sunlight, heat sources, vibration, dust, moisture, and/or cold. For proper ventilation, allow the following minimum clearances around this unit.
Top: 10 cm (4 inch)
Rear: 10 cm (4 inch)
Sides: 10 cm (4 inch)
- 3 Locate this unit away from other electrical appliances, motors, or transformers to avoid humming sounds.
- 4 Do not expose this unit to sudden temperature changes from cold to hot, and do not locate this unit in an environment with high humidity (i.e. a room with a humidifier) to prevent condensation inside this unit, which may cause an electrical shock, fire, damage to this unit, and/or personal injury.
- 5 Avoid installing this unit where foreign object may fall onto this unit and/or this unit may be exposed to liquid dripping or splashing. On the top of this unit, do not place:
Other components, as they may cause damage and/or discoloration on the surface of this unit.
Burning objects (i.e. candles), as they may cause fire, damage to this unit, and/or personal injury.
Containers with liquid in them, as they may fall and liquid may cause electrical shock to the user and/or damage to this unit.
- 6 Do not cover this unit with a newspaper, tablecloth, curtain, etc. in order not to obstruct heat radiation. If the temperature inside this unit rises, it may cause fire, damage to this unit, and/or personal injury.
- 7 Do not plug in this unit to a wall outlet until all connections are complete.
- 8 Do not operate this unit upside-down. It may overheat, possibly causing damage.
- 9 Do not use force on switches, knobs and/or cords.
- 10 When disconnecting the power cable from the wall outlet, grasp the plug; do not pull the cable.
- 11 Do not clean this unit with chemical solvents; this might damage the finish. Use a clean, dry cloth.
- 12 Only voltage specified on this unit must be used. Using this unit with a higher voltage than specified is dangerous and may cause fire, damage to this unit, and/or personal injury. We will not be held responsible for any damage resulting from use of this unit with a voltage other than specified.
- 13 To prevent damage by lightning, keep the power cable and outdoor antennas disconnected from a wall outlet or this unit during a lightning storm.
- 14 Do not attempt to modify or fix this unit. Contact Qualified service personnel when any service is needed. The cabinet should never be opened for any reasons .
- 15 When not planning to use this unit for long periods of time (i.e. vacation), disconnect the AC power plug from the wall outlet.
- 16 Be sure to read the TROUBLESHOOTING section on common operating errors before concluding that this unit is faulty.
- 17 Before moving this unit, disconnect the AC power plug from the wall outlet.
- 18 Condensation will form when the surrounding temperature changes suddenly. Disconnect the power cable from the outlet, then leave this unit alone.
- 19 When using this unit for a long time, this unit may become warm. Turn the power off, then leave this unit alone for cooling.
- 20 Install this unit near the AC outlet and where the AC power plug can be reached easily.
- 21 The batteries shall not be exposed to excessive heat such as sunshine, fire or the like. When you dispose of batteries, follow your regional regulations.
- 22 Excessive sound pressure from earphones and headphones can cause hearing loss.

REAR PANEL



1. POWER SWITCH

Switch powerDC INPUT, AC INPUT, AC or DC off.

When press "AC" , AC status, the speaker is working and Battery charge.

When press "OFF" , Power off, the speaker cannot work under this status.

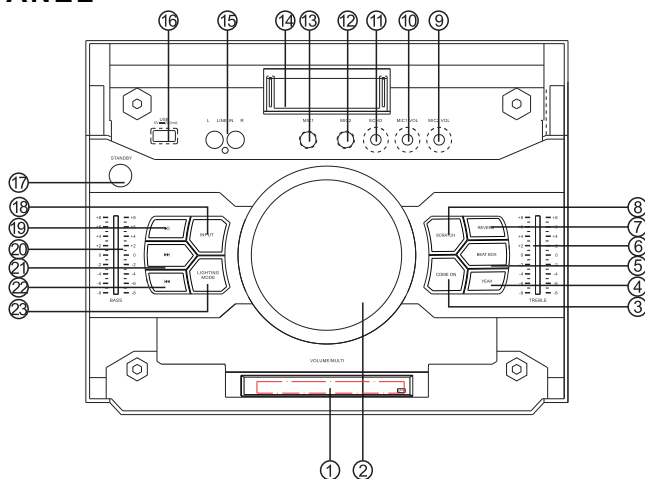
When press "DC" , Battery powered,the speaker can work under the Battery, no need AC INPUT.

2. AC INPUT

AC 240V~, 50Hz

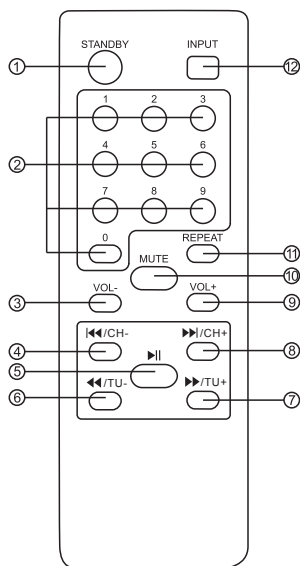
3. FM ANTENNA

TOP PANEL

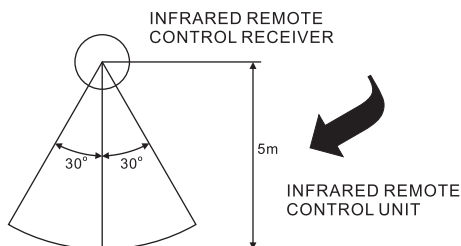


1. LED DISPLAY
2. VOLUME/MULTI
Rotate the knob to adjust the volume.
3. COME ON(EF 5)
4. YEAH(EF 4)
5. BEAT BOX(EF 3)
6. TREBLE
7. REVERB(EF 2)
8. SCRATCH(EF 1)
9. MIC2 VOLUME
10. MIC1 VOLUME
11. ECHO
12. MIC2 JACK
13. MIC1 JACK
14. Wall spotlight
15. LINE IN AUDIO INPUT JACK
Connect to LINE IN signal output jack.
16. USB input jack
17. STANDBY
18. INPUT MODE
Press this key to choose Input mode, LINE,BLUE,FM,USB
19. PLAY/PAUSE
20. BASS
21. NEXT
22. PREV
23. LIGHTING MODE

REMOTE CONTROL



1. STANDBY
2. NUMBER BUTTON
3. VOLUME-
4. PREVIOUS/CHANNEL-
5. PLAY/PAUSE
6. B.WARD/TUNNER-
7. F.WARD/TUNNER+
8. NEXT/CHANNEL+
9. VOLUME
10. MUTE
11. REPEAT
12. INPUT



REMOTE CONTROL OPERATION:

- ☐ If the remote control conflicts with other devices, the operation will be affected.
- ☐ Do not simultaneously press buttons on the unit and the remote control.
- ☐ Avoid using two remote controls at the same time as this will cause a malfunction.
- ☐ Use only UM-4 ``AAA`` size batteries. Do not mix old batteries with new ones.
- ☐ If the batteries leak, clean thoroughly before replacing with new ones.
- ☐ Do not short two terminals of the batteries. Dispose of old batteries in a suitable place.

OPERATING

Normal function

1. Be sure to switch off the power and to connect to corresponding input jacks.
2. Turn on the power and wait 3-4 seconds until the speaker functions are connected.
3. Select an audio source by pressing the INPUT key on the front panel to display LINE,BLUE, FM,USB.
4. Adjust the VOLUME/MULTI knob on the front panel or the VOL+/- key on the remote control to adjust the setting of the main volume.
5. Turn the left push shot to adjust the BASS effect, turn the right push shot to adjust the TREBLE effect.
6. The DJ EFFECT is SCRATCH,REVERB,BEAT BOX,COME ON,YEAH.Press the button on the front panel to change the music effect as you like.
7. Press the LIGHTING MODE button on the front panel to change the OFF,R,G,B,RG,RB,GB, RGB, AUTO light mode.
8. Press the MUTE key to mute, press it again to reset.

Light color control function

To control the light modes coming from the speaker panels by "light model" button on the panel.

- LED1= red lights flash
- LED2= green lights flash
- LED3= blue lights flash
- LED4 = red and green lights flash
- LED5= red and blue lights flash
- LED6= green and blue lights flash
- LED7 = red, green, and blue lights flash
- LED8= the various color combinations cycle through and flash.

Tuner applications

- 1.Before using the radio functions, you must attach the supplied antenna. Adjust the antenna to obtain optimum reception.
Press the INPUT key on the front panel(amplifier)or the FM key on the remote control,to select "FM" function.
2. Press the CH+/CH- key on the remote control to find radio bands that you have previously saved .
3. Press or hold the TU+/TU- key on the remote control to adjust the radio frequency manually.

KARAOKE function

1. Please turn off the microphone volume and adjust the volume gradually after inserting the microphone.
2. Adjust the MIC.VOL knob on the front panel to change the microphone VOLUME.
3. Adjust the ECHO knob on the front panel to change the microphone ECHO.

Note: Do not touch the top of the microphone when singing in order to avoid howling effect.

Adjust the microphone volume gradually to avoid howling effect.

OPERATING

Bluetooth pair and connect

Turn off any Bluetooth devices previously paired (linked) with this unit.

Turn on the Bluetooth features on your phone or music player.

Turn on and set this unit to Bluetooth mode. The flashing blue light BT on LED display indicates it is in pairing mode.

Set your phone or music player to search for Bluetooth devices.

Select BLAUPUNKT-PS100 from search results on your phone or music player.

Select OK or YES to pair this unit with your phone or music player.

If protected, enter 0000 for passkey steady blue light indicates successful connection.

Function of USB reader

This unit has a USB jacks. Press the INPUT key to select USB, then you can insert a USB to play music.

Important: The USB port is intended only for data transfer only, other devices cannot be used with this USB connection. The use of USB extension cords is not recommended.

BATTERY

Under AC working,

the battery on charge on the same time.

When full charge, the display will show "FULL"

When on charge, the display will show "CHG"

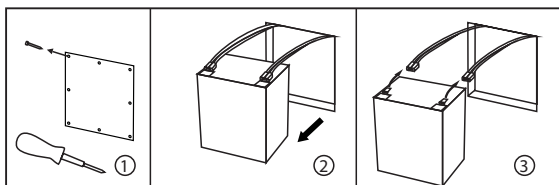
Under DC working:

When battery level is full, the display will show "FULL"

When battery level is low, the display will show "FULL". If you see this information, please charge it soon, otherwise, the battery level too low, the speaker will turn off for protection.

BATTERY DISASSEMBLY

1. Remove the screws on the rear panel.
2. Take out the battery.
3. Disconnect



Accessories

Remote control -----	1 pc
Instruction Manual -----	1 pc
RCA 1.5 meters input cable-----	1 set
Microphone-----	1 pc

Specification

Frequency Response -----	20Hz-20KHz
Power Source -----	240V~,50Hz
Power Consumption -----	120W

- The specification presents only as a reference. The value of weight and size are approximation.
- Our product is Improved ceaselessly and the specification and function may be changed without prior notice.

WARRANTY INFORMATION 1 YEAR*

If you have issue with our PS-100 product please contact our service center.

Authorized Service Center Blaupunkt Speakers
Address: Envent World Wide Pvt. Ltd.,
Khasra No- 15/15 (4-16), Village Samalkha, Tehsil Vasant Vihar, New Delhi-110037.
E-Mail: wecare@blaupunkt-audio.in Tel: 1800 843 4333

Please prepare and submit the following information during the telephone or e-mail notification to facilitate the process:

- Serial number
- Date of purchase
- A copy of proof of purchase in case of warranty

Note - Important information:
Please use the original packaging or other suitable packaging to protect the unit in transit.

