

Corner Moulded Shower Wall Liner Installation Instructions

Before Installation please check that your wall liner is undamaged

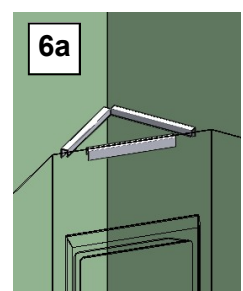
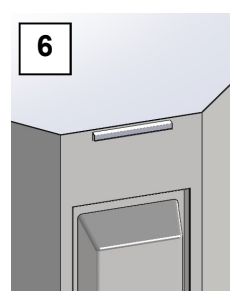
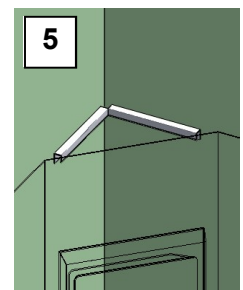
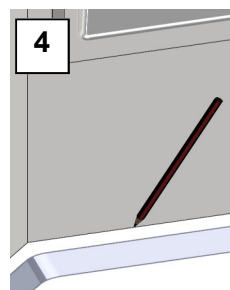
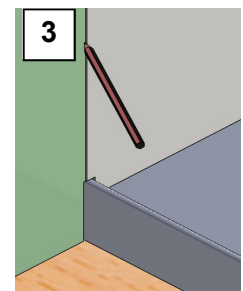
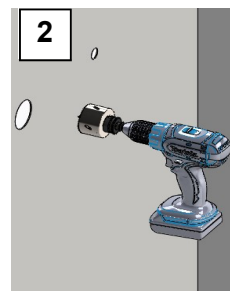
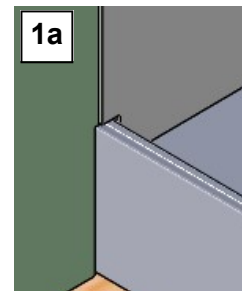
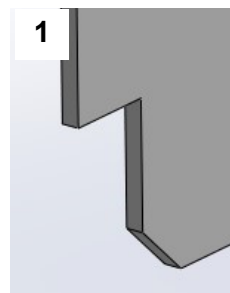
- Check to ensure the shower tray has been installed in accordance with the Tray Installation Instructions. The tray must be level to achieve optimum results
- Your Shower has been designed for walls lined with new 10mm Plasterboard and Villa Board. **Ensure the area being covered by the Wall liner is not stopped, sanded, sealed or painted – The Showerbond adhesive will not adhere to these surfaces**
- Do not remove the clear protective film until the installation is complete
- Only use the Showerbond adhesive supplied, failure to do so will void your warranty
- Ensure that any plumbing outlets are situated as not to obstruct the door when opened.

INSTALLATION

1. If installing the wall liner onto a tray that has upstands on all four sides there may be a requirement to notch the bottom corners of the liner for correct fitment (see figs 1 & 1a)
If the tray is installed level and the walls are plumb the liner should sit hard down to the tray surface. If the wall liner does not sit flat on the tray it may be scribed and trimmed using a hand plane or sandpaper

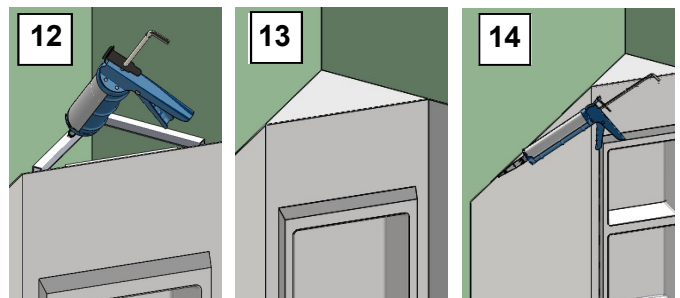
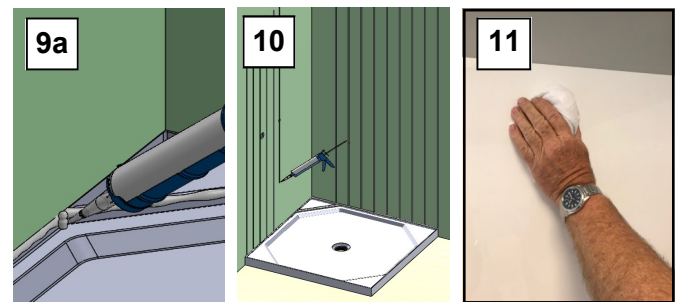
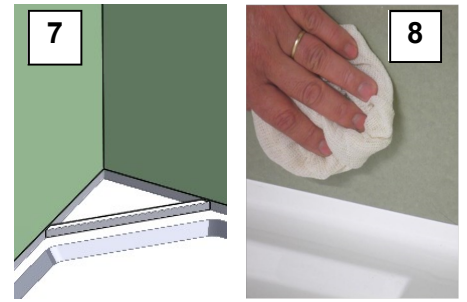
Caution: Trimming the Wall liner will reduce its height, some discretion will be required to determine the amount of trimming possible

2. Carefully measure and cut out the wall liner for tap-ware. (refer to cutting and drilling instructions on next page)
Trial fit the wall lining by offering it into the rear corner of tray. The liner must not protrude past the front edge of the shower tray as this may affect the door installation.
3. Using a pencil mark a line around the perimeter of the wall lining.
4. On the tray mark the diagonal position of the wall liner.
5. Remove the Wall Liner. Extend the two top outline marks into the back corner. Where the top of the Wall liner cuts across the rear corner attach the two 170mm Support extrusions (supplied with the liner) 5mm below the pencil line as shown - Attach by removing the masking film from the Double sided tape and firmly pressing in place
6. Attach the third 170mm support extrusion to the rear of the wall liner 5mm down from the top (6a shows how this will appear once the wall is installed)



INSTALLATION CONTINUED

7. Install the Wall Support Extrusion (310mm with mitred ends) to the tray -Remove the masking film from double sided tape and position the support 3mm back from the pencil line previously made in step 4 (to allow for liner thickness). Place in position and press down firmly
8. Ensure wallboard and rear of wall liner are free from dirt, dust and any contaminants. (To reduce static wipe the rear of the liner with a damp cloth)
9. Apply a **continuous** bead of NG silicone sealant 10mm in diameter along the face of the Tray Wall Support extrusion and at the junction where it meets the trays up-stands and along the inside top half of the tray's up-stand where the liner will be placed (**9a**). This will minimize any sealant squeezing out when the liner is fitted
10. Using the supplied Shower Bond adhesive apply 5-6mm beads in vertical lines at 100mm spacing, staying 20mm in from the marked outline of the wall liner.
11. Place wall lining into position and press firmly onto adhesive over entire surface. Wipe off any excess sealant or adhesive that may have oozed out
Installation of liner must be complete within 15 min to avoid premature curing of adhesive.
12. Apply a thin bead of Silicone to the top Wall Support extrusions
13. Install the Triangular Corner insert
14. Seal the top edge of the wall liner with a suitable sealant. Bear in mind if painting the Gib surface use a paintable sealant
15. Peel off protective film from lining and fit tap-ware.
DO NOT remove the tray's protective masking yet.
16. The installation of the enclosure may begin immediately or as required.



CUTTING & DRILLING

- Hacksaw or Jigsaw with a minimum of 18 teeth per inch.
- Holes up to 12mm in diameter can be drilled with standard twist drill with a reduced cutting angle.
- Holes larger than 12mm diameter can be cut using a hole saw.
- Edges can be finished with medium grit sandpaper or planed with a hand plane.



Clearlite Bathrooms
54-58 Hillside Rd, Glenfield, Auckland
Ph (09) 4443780
info@clearlite.co.nz
Clearlite.co.nz