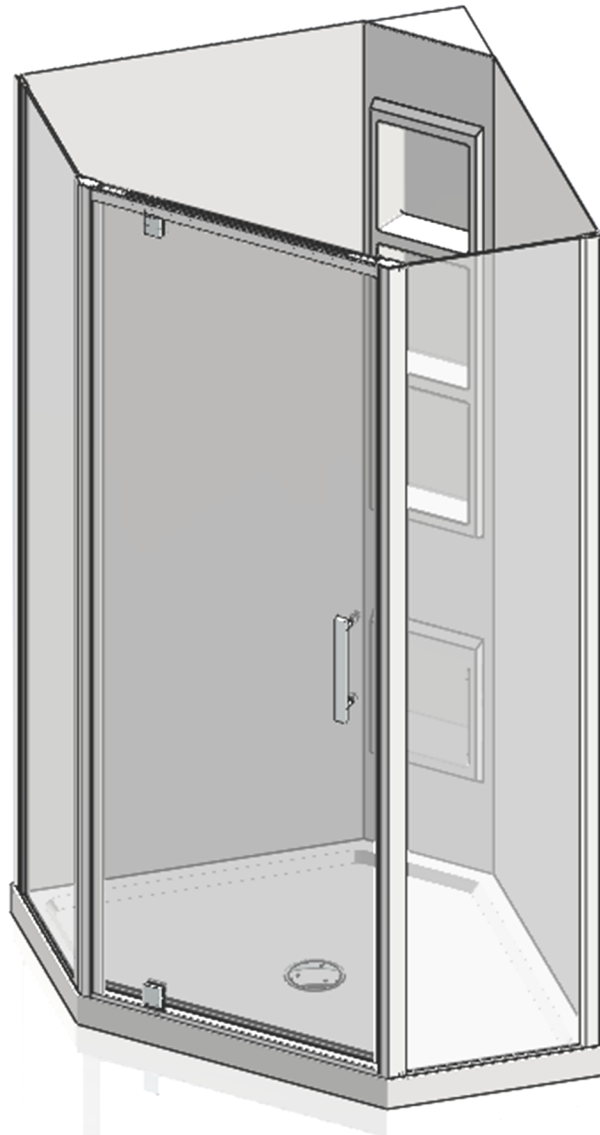




# Installation Instructions

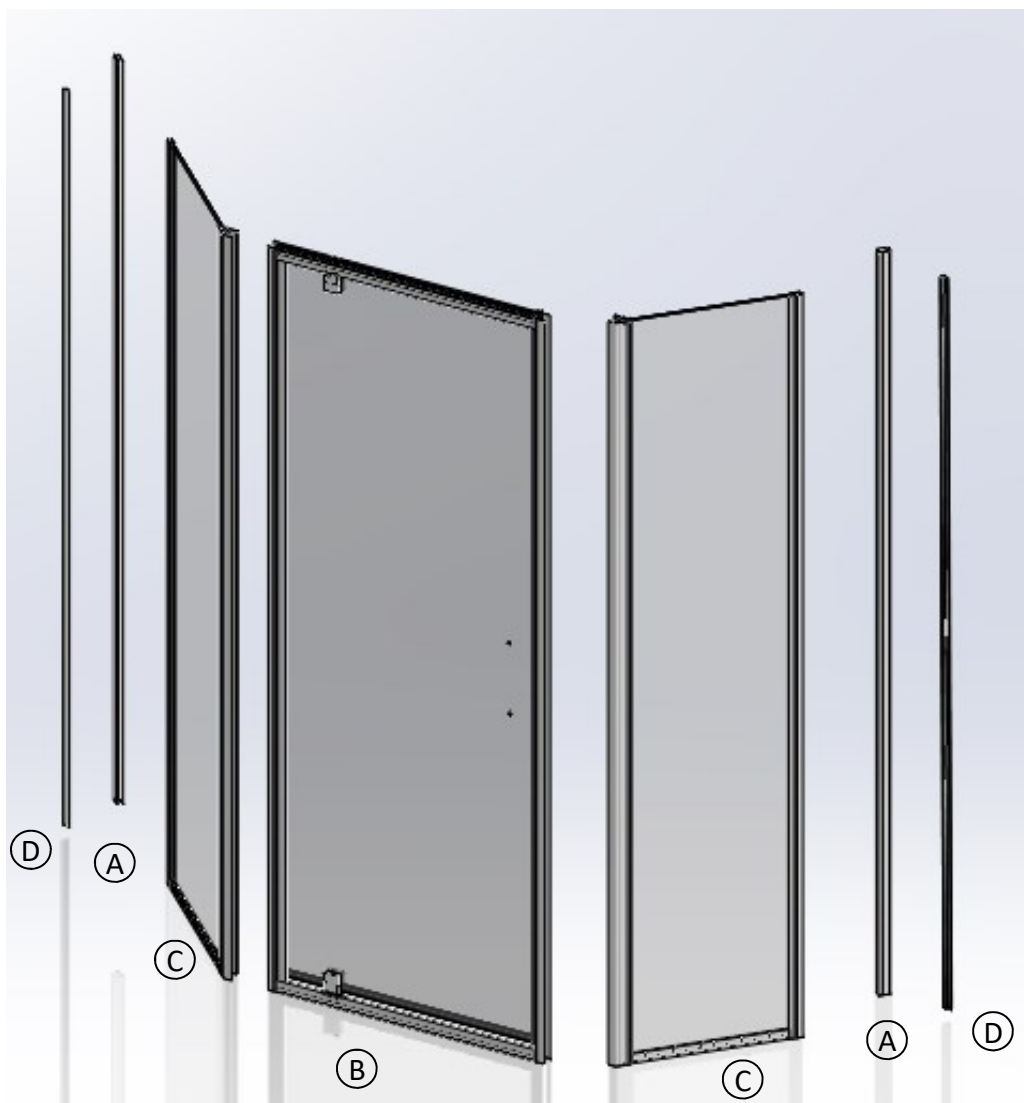
## Angle Corner

---



---

Please read these Instructions carefully



**Components**

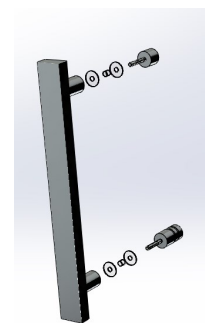
- A –Return Wall Receiver x 2
- B - Door Assembly
- C - Corner Return x 2
- D - Cover Trim x 2 (on Selected Models)

**Tools Required**

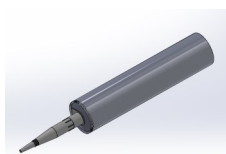
- Drill
- Spirit level
- Tape Measure
- Screw Driver (No.1 Sq drive)
- Caulking Gun
- Masking tape
- Pencil
- Cleaning Cloth

**(For shipping purposes the Wall Receivers are packed in the sides of the Return**

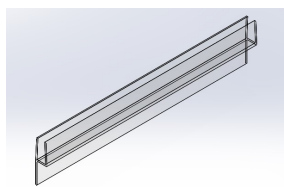
**Installation Components**



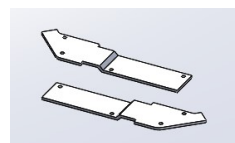
Handle  
(where applicable)



Tube of NG Silicone



Drip Seal –1m



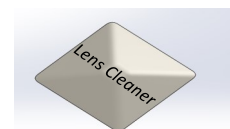
Brackets  
Left and Right



No.6 x 38mm  
screw Qty 6



Screw Cap  
Qty 12



Cleaning Towelette  
(White showers only)

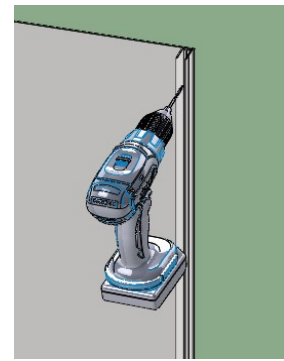
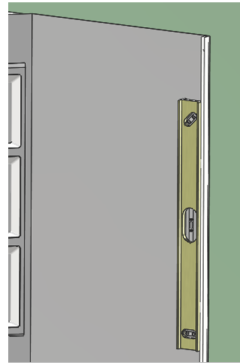
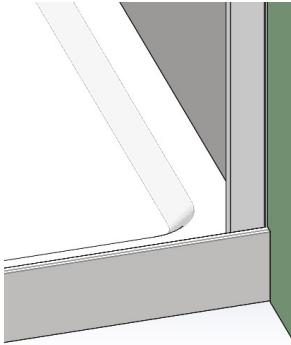
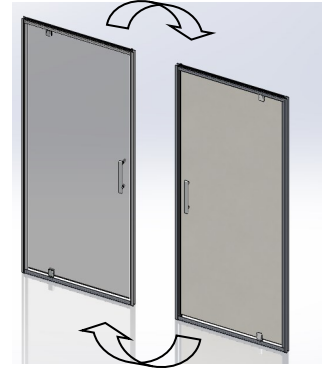


No.6 x 10mm  
screw Qty 24

## Installation

### Note:

Your shower Door can be installed to open from the left or right hand side by rotating the door 180 degrees, and the Return Panels can be fitted on either side. You must decide which way the door is to open before starting the installation.



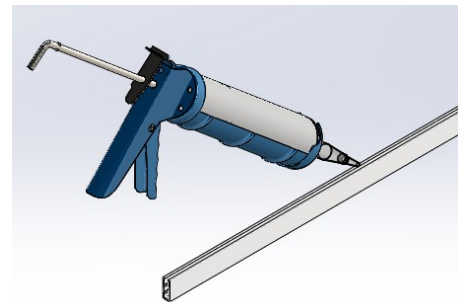
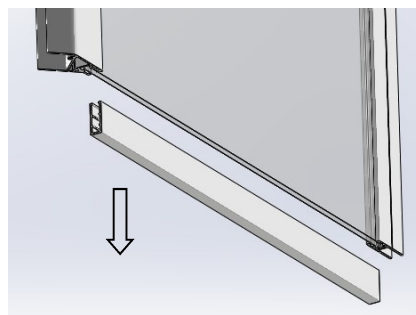
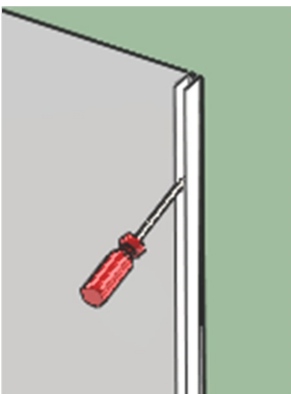
- 1)** Position the Wall Receivers hard against the inside edge of the tray upstand. "V" groove line facing towards the inside the shower

**NOTE: If the shower walls are to be tiled the Wall Receivers must be installed to the Water proof membrane before tiling. This ensures the doors will fit**

- 2)** Plumb up the Wall Receiver using a spirit level. Mark the position with a pencil line.

Repeat on adjacent side for the Return Wall Receiver

- 3)** Pre drill three equally spaced clearance holes (i.e. top, bottom and centre) in the Door & Return Wall Receivers using a 4.5mm drill bit. Reposition the Wall Receivers to the pencil line on the wall. Drill into the wall through the clearance holes using the 3.0mm drill bit. **N.B.** The holes preferably locate into a stud or nog. As an alternative, a toggler system can also be used.

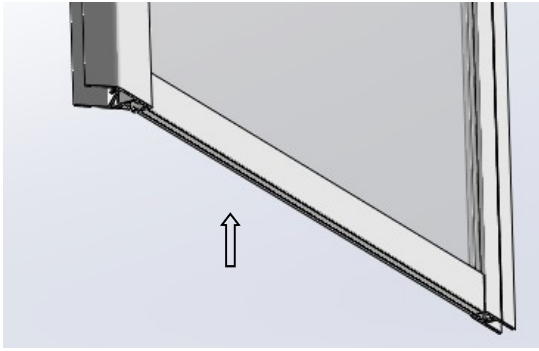


- 4)** Fix the Wall Receivers to the walls using the No.6 x 38mm stainless steel screws

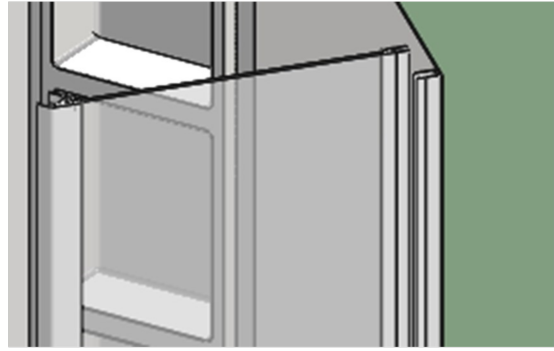
**NB** As an extra precaution seal holes with silicone.

- 7)** A Return Sill is supplied with the Return panels and are only temporarily clipped to one end of the panel. As the Return panel can be installed left or right hand **it is necessary to remove the sill, apply sealant and**

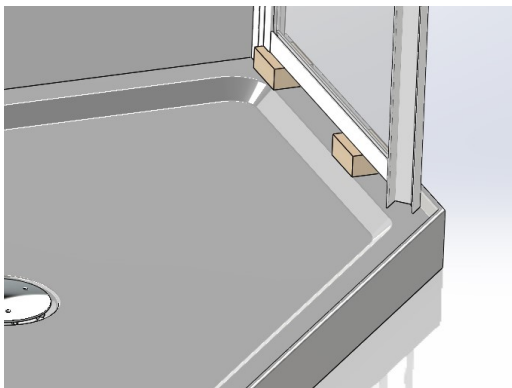
- 8)** Apply a small continuous bead of NG Silicone sealant into the bottom of the Return sill channel. **Do not fill** the channel with silicone as this will be excessive and the majority will ooze out making



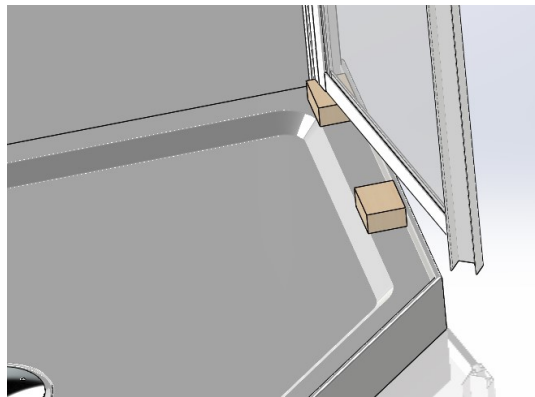
**9)** Fit the Return Sill to the lower edge of the Return Panel. Carefully wipe



**10)** Position the Return Panel into the Return Wall Receiver ensuring the Corner Post engages over the door section, do not fix in place at this time.

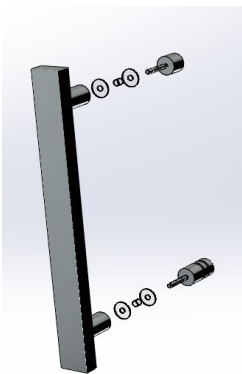


**11)** Insert a 25-50mm Wood packer under the Return panel so it sits above the Shower tray upstand.



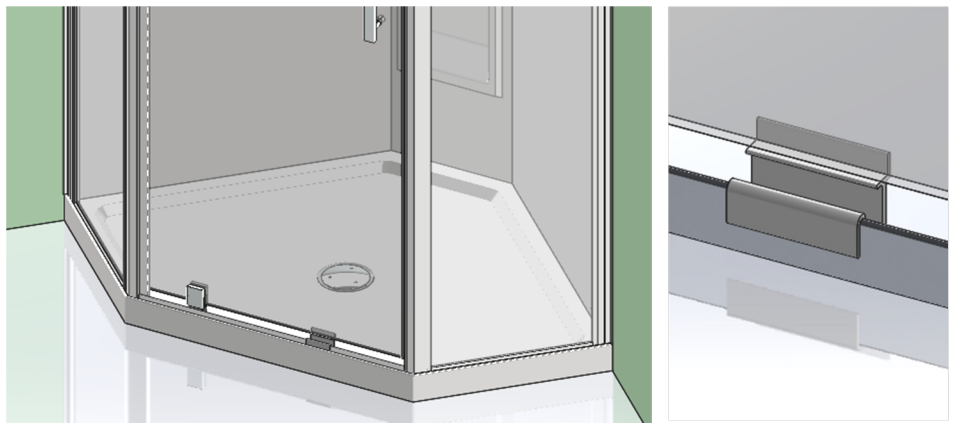
**13)** Carefully swing the Return Panels outwards

**12)** Repeat steps 7– 11 for the adjacent Return Panel

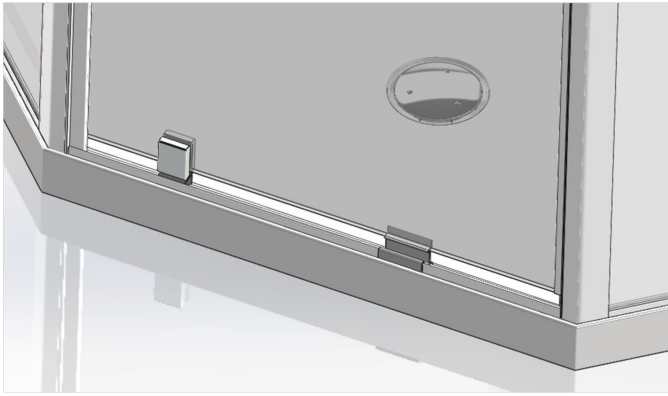


**14)** Fit the handle to the door (where required). This will assist in the opening & closing during the installation process

Ensure to fit the plastic washers and bush to prevent metal on glass contact



**15)** Lift the Door up and fit it onto the Return Panels taking care to hold it above the front lip of the tray (You will note that as you slide the door onto the Returns, the Return Panels will self align to the inside of the upstand on the tray) Once the Door and Returns are fully engaged let the Door slide gently down inside the upstand of the tray. Do not remove the Door setting block, this will assist in supporting the door during installation and setting the correct clearance from the sill

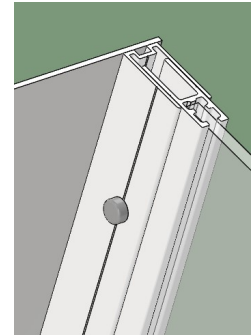
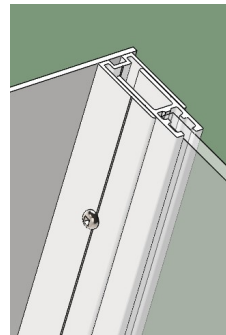
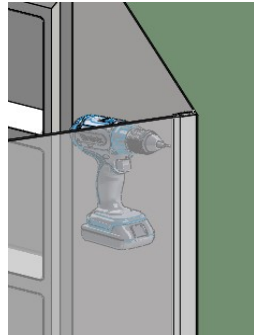
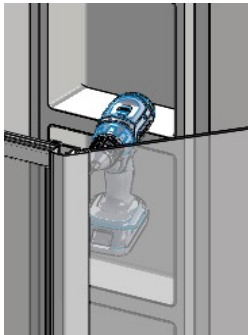


- 16)** For Sureseal trays the Door and Return Panels should be close to the inside edge of the tray's upstand as possible

For other applications, check that the doors are parallel with the front edge of the tray.



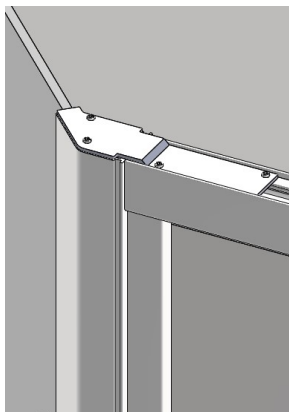
- 17)** Adjust the Door set ensuring the corner posts line up with the corners of the tray and that they are sitting plumb and level.



- 18)** Using the 3.0mm drill bit, drill through the Wall Receiver sections and into the Return frames. (Use the "V" groove line as a guide). Fix the Door set together using the No.6x10 Screws. Cover the screw heads with the Cover caps

Repeat for the Corner posts into the Door frame

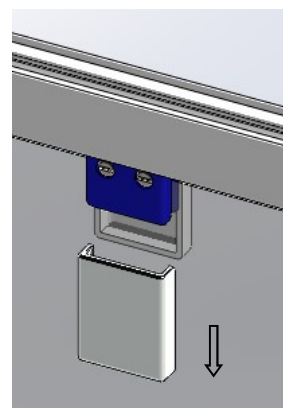
**All Screw fixings are made from inside the shower**



- 19)** Position left and right hand corner brackets over the Corner posts

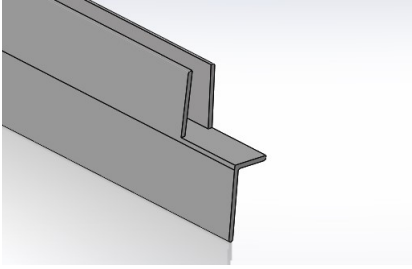
Using the No.6 x 10 screws fix the brackets into the screw ports of the Corner Post. For the remaining holes drill through the bracket holes into the Door profile (3.0 mm drill bit) and fix in place using No.6 x 10mm screws

No Cover caps are required for these screws



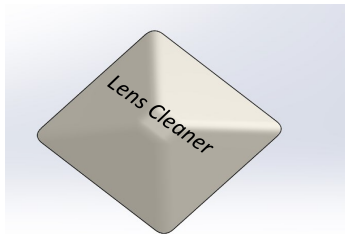
- 20)** Slide the outside Clamp Block Covers off the Pivot Clamp. Using a flat blade screwdriver sufficiently loosen the two screws, adjust the door by sliding left or right in the pivot

Once the door adjustment is complete ensure the screws are retightened and reinstall the Clamp Block Covers. Open the door and remove the door setting block



**21)** The Drip seal is supplied in a 1m length, this will need to be cut to the desired lengths for each side of the pivot . The opening side Drip seal will also need to be notched to fit under the door magnet profile. Make the Notch 13mm in length and finishing down to the horizontal ledge of the drip seal

### Sealing the Shower



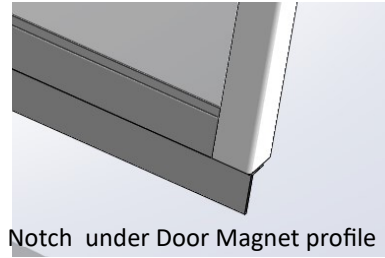
**23)** For White Showers only - take the Cleaning Towelette and wipe the surfaces of the Powder coated profiles where Silicone will be applied  
Allow to dry (1-2 minutes)

### **25) Cover Trim– (selected models only)**

The Cover Trim is provided to cover the exposed vertical edge of the wall liner and is the final step of the installation. For some installations the Cover trims may require cutting to length

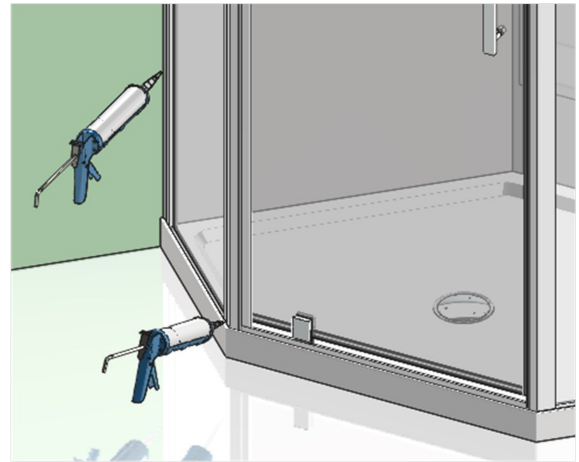
To fit the Cover trim apply small vertical beads of silicone down the Wall Receiver and the exposed wall lining outside of the Wall Receiver. Embed the Cover trim into the silicone. If the liner extends more than 10mm it will need to be trimmed prior to fitting the Cover Trim

**26) Your Shower is now complete**



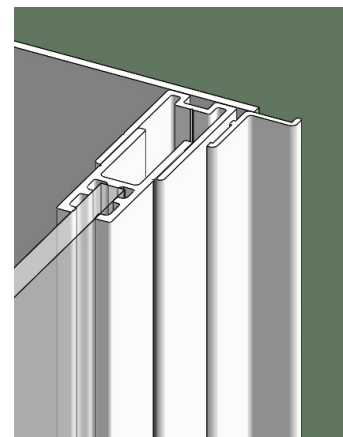
Notch under Door Magnet profile

**22)** Fit the Drip Seals to the glass door



**24)** The Door and Returns can now be sealed in place using silicone sealant. Ensure all surfaces are first cleaned with dry clean cloth. Seal between the tray upstand and the door set along the bottom outside edges. Seal vertically between the Wall Receivers and Wall Liner

**Note** MASKING the area to be Sealed will give you a superior finish



**IMPORTANT: DO NOT apply sealant to the inside of the shower**

