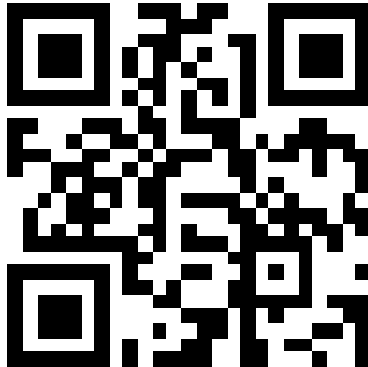




15.6" Z1 Series
Portable Display

User Guide

SCAN ME



Tech Support:

support@lepow.hk

[24/7 service]

Contents

- 2 Package Contents
- 3 Monitor Introduction
- 5 Connect Monitor with Devices
- 9 Duplicate & Extend Mode Setting
- 11 Screen Rotate Setting
- 12 OSD Function Introduction
- 19 Monitor Standing Positions
- 20 Specifications
- 21 Supported Devices & Models
- 23 Care & Cleaning
- 24 Contact Lepow
- 25 Notices

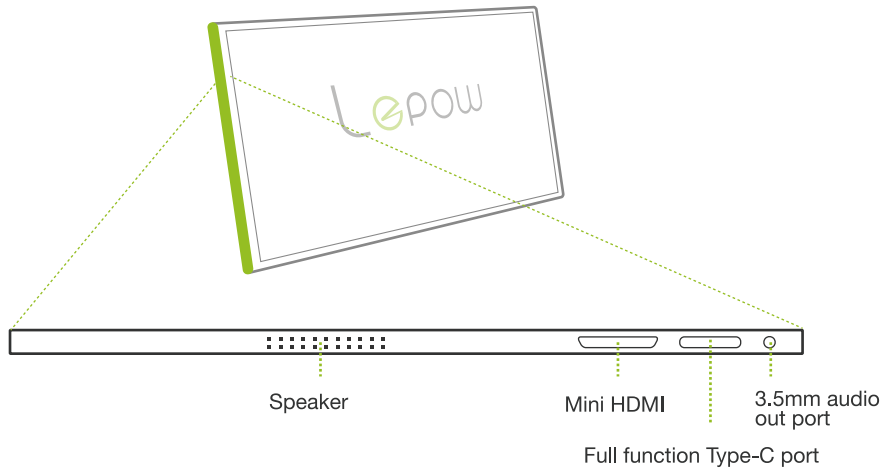
P.S. If you think the font size is too small, please scan the QR code on the left hand side or email us through support@lepow.hk to get the pdf manual.

Package Contents

- ◆ LEPOW Portable Monitor
- ◆ Mini HDMI to HDMI Cable
- ◆ Type-C to Type-C Cable
- ◆ Type-C to USB A Cable (Power Supply)
- ◆ Smart Cover
- ◆ Screen Protector
- ◆ Wall Charger
- ◆ Warranty Card
- ◆ Gift Card

Note: If any of the above items is damaged or missing, please contact us immediately. (E-mail: support@lepow.hk)

Monitor Introduction

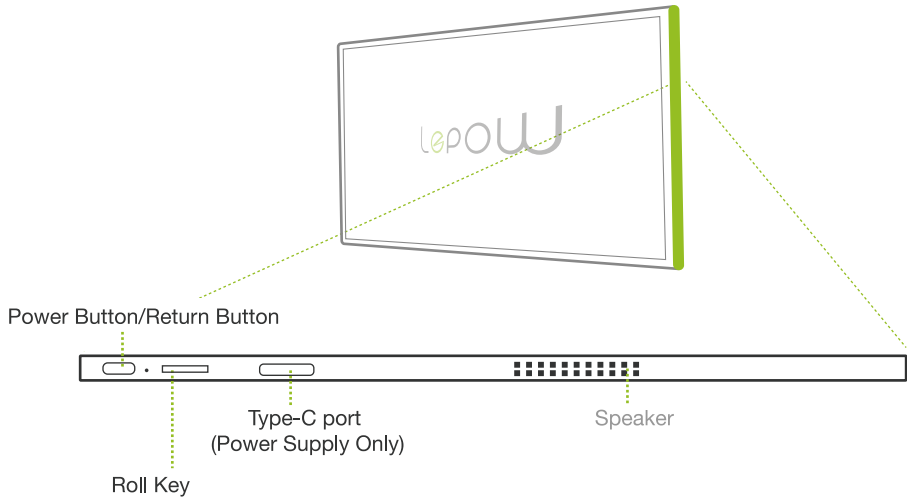


Speaker: Listen to music, movies, games, and multimedia files

Mini HDMI: Audio and video signal transmission

USB Type-C full function port: Power supply, audio and video signal transmission

3.5mm audio out port: Connect external speakers, headphones or digital audio equipment



Type-C port (Power Supply Only): Power supply support, reverse charging, compatible with PD2.0 power supply protocol, support 5~20V voltage input

Roll Key: Press the Roll Key to enter the OSD (On-Screen Display) menu.

Scroll the Roll key up and down in the menu to control the cursor; Press the Roll key to confirm.

Scroll up the Roll Key in the main interface to open the brightness menu and adjust the brightness by up and down.

Scroll down the Roll Key in the main interface to open the volume menu, and up and down to adjust the volume.

Power Button/Return Button: Press button for 3 seconds to turn on/off the monitor; Press it for a short time to return to the previous page.

Connect Monitor with Devices

1. Connection Condition

This monitor does not have a built-in battery. Before connecting the monitor, please make sure it has enough power (5V/2A or above) comes in firstly.

1. Connect with external power supply

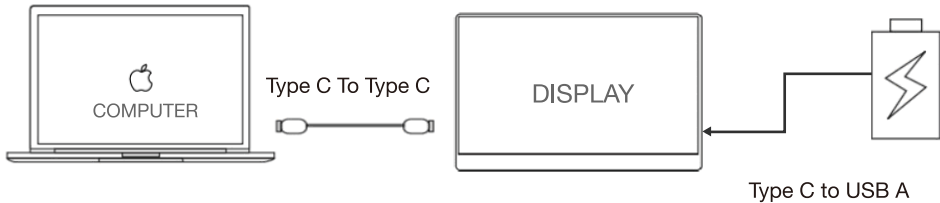
Firstly, connect your monitor to power supply (5V/2A or above) to give it enough power. Then connect monitor with your device.
Screen will show Power-Saving Mode or No Signal if it is not powered enough.

2. Connect without power supply

Only works under Type-C port connection. Make sure the Type-C port of your device is a full-featured Type C port.

Connect Monitor with Devices

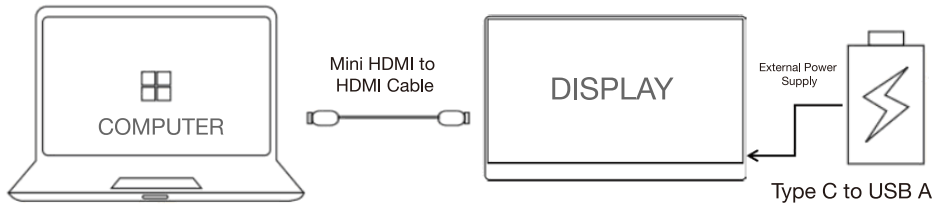
2.LAPTOP(With Type-C)



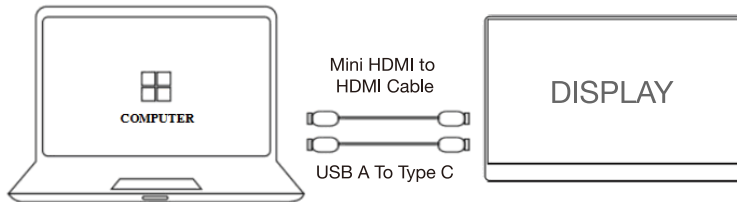
Note: If you want to adjust the brightness and volume above 80%, please make sure the external power supply of 5V/2A or above be connected.

Note: Not all laptops with a Type-C port can work with Lepow monitor. Please check the Type C port of your laptop if it supports audio and video signal transmission.

3.PC/ Laptop (With HDMI Port)

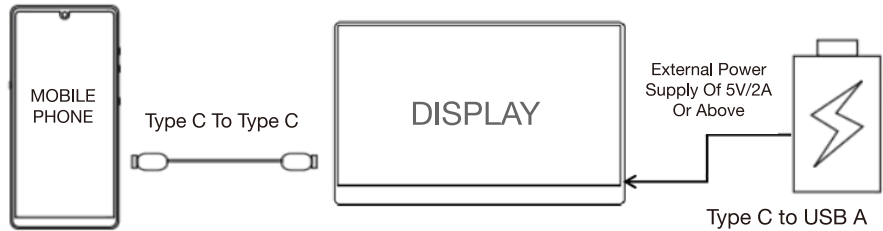


OR



Note: HDMI port does not support power transmission. It is a must to connect an extra power supply (5V/2A or above) if you use mini HDMI port for connection.

4.PHONE (With Type-C)



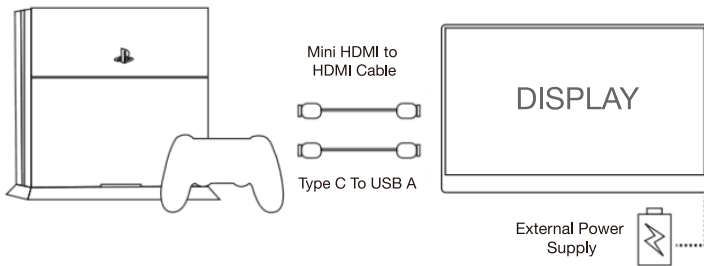
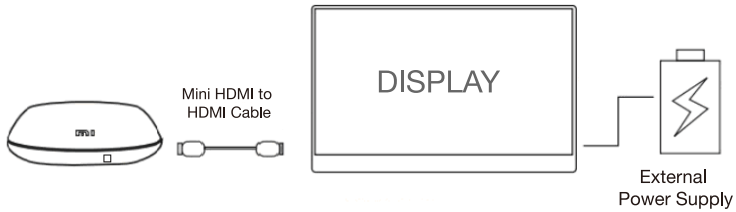
When there is no external power supply, the cell phone supplies Power to the monitor. (Energy-saving mode is activated; Brightness is automatically adjusted to 30%)

When the external power supply is connected, the monitor charges the mobile phone through the external power supply. (To ensure the monitor and the phone can get enough working current, please use at least 16W charger or power bank as the external power supply.)

Note: Only works directly with cell phone through full-featured type-C port.

For iPhone: need a lightning to HDMI adaptor.

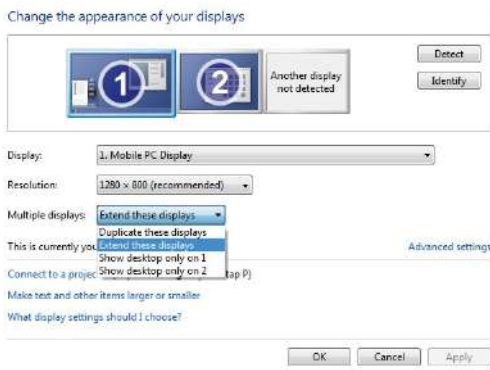
5.Other Devices



Note: Please connect the power supply cable first and then Mini HDMI to HDMI Cable to ensure the smooth transmission of signals.

Duplicate & Extend Mode Setting

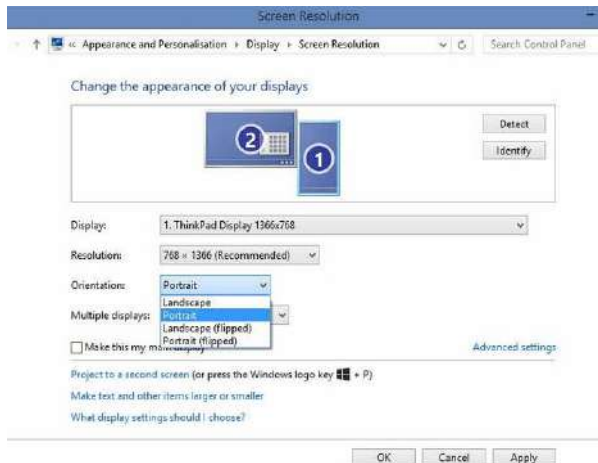
- 1.Connect your Lepow monitor to a power outlet and an available port on your PC.
- 2.Right-click the desktop and select either Screen resolution (Windows 7/8) or Display settings (Windows 10) or Display settings (Windows 10).
- 3.Click the Multiple displays drop-down list, and then select Extend these displays, or Duplicate these displays. Note if you cannot see the additional monitor(s) listed, click Detect. If does not work, try restarting your computer and do steps again.



Screen Rotate Setting

- 1.Connect your Lepow monitor to a power outlet and an available port on your PC.
- 2.Right-click the desktop and select either Screen resolution (Windows 7/8) or Display settings (Windows 10).
- 3.Click the Orientation drop-down list, and then select Landscape or Portrait screen.

Note if you cannot see the option of Orientation on your laptop/PC, Please check if your laptop/PC has this function.



OSD Function Introduction

1. Press the Roll Key to activate the OSD menu

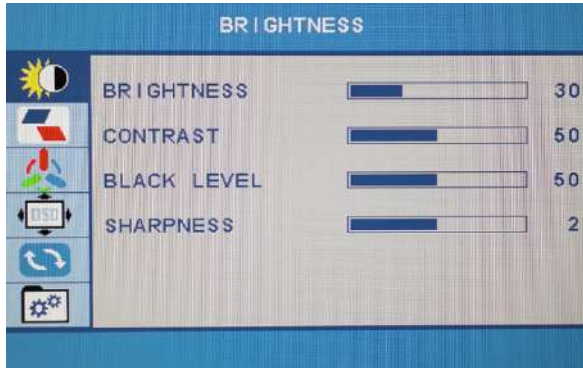


2. Scroll the Roll Key up and down to choose your settings

3. Press Roll Key to confirm

4. Press Power Button to return to the previous page

OSD Setting- Brightness



Brightness: The adjusting range is from 0 to 100.

Contrast: The adjusting range is from 0 to 100.

Black Level: The adjusting range is from 0 to 100.

Sharpness: The adjusting range is from 0 to 100.

Note: When the brightness is adjusted to 80, the screen will turn to black if you do not connect an external power supply of 5V/2A or above.

OSD Setting- Image



ECO: Contains Six modes(Standard/ Game/ Movie/ Text/ FPS/ RTS Modes)

DCR: Select ON or OFF to enable or disable dynamic contrast ratio function.

Aspect: Adjusts the aspect ratio to 4:3 / 16:9

Note: When the brightness is adjusted to 80, the screen will turn to black if you do not connect an external power supply of 5V/2A or above.

OSD Setting- Color Temp



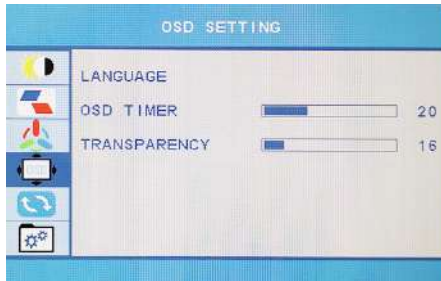
Color Temp: Contains two preset color modes (Cool, Warm) and User Mode.

Red: The adjusting range is from 0 to 100.

Green: The adjusting range is from 0 to 100.

Blue: The adjusting range is from 0 to 100.

OSD Setting



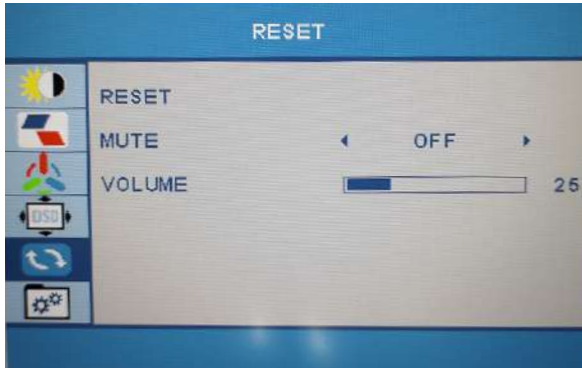
Language: Select OSD language. The selections are: English, French, German, Simplified Chinese, Italian,

Spanish, Portuguese, Turkish, Polish, Netherlands, Japanese, Korean

OSD Timer: The adjusting range is from 0 to 100.

Transparency: The adjusting range is from 0 to 100.

OSD Setting- Reset

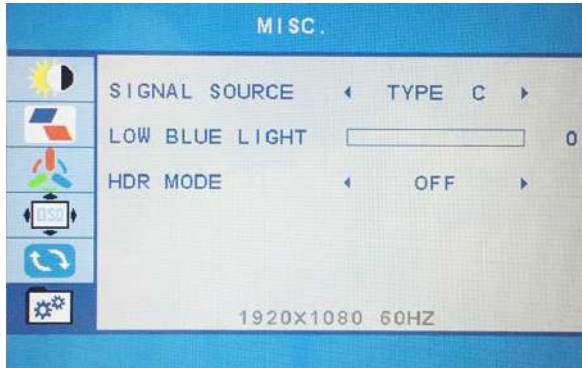


Reset: Selects RESET to revert all settings to the factory default mode.

MUTE: Select ON or OFF to

Volume: The adjusting range is from 0 to 100.

OSD Setting- Color Temp



Signal Source: Contains two signal sources Type C and HDMI.

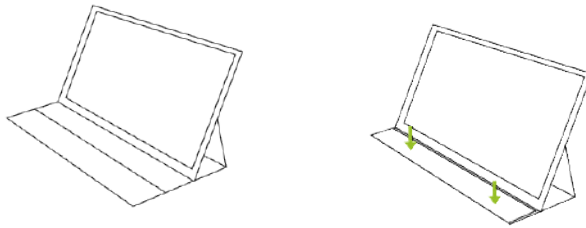
Low Blue Light: The adjusting range is from 0 to 100.(0/25/50/75/100)

HDR MODE: Select ON or OFF to open HDR mode.

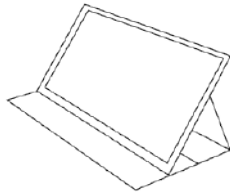
Monitor Standing Positions

You can stand up the monitor by several positions with the smart cover.

Method 1



Method 2



Specifications

Product Name: Lepow Type-c Portable Monitor

Net Weight: 770g

Visual area: 344.16*194.59mm

Screen Size: 15.6 inch

Panel type: IPS

Dimension: 368 * 225 * 8.8 mm

Aspect ratio: 16:9

Resolution: 1920*1080

Display color: 16.7M

Color temperature: 6800K

Visual angle: H: 85°/85°Min V: 85°/85°Min

Contrast ratio: 1000:1

Brightness: 300cd/m²

Color gamut: 72%

Input Interface: Mini HD(Video signal)、 Type C full function (Video data、 Power supply ISDN) 、 Type C power supply

Output Interface: 3.5mm headphone interface

Speaker: Built-in speakers (1W*2)

Refresh Rate: 60 Hz

***Specifications are subject to change without notice.**

Supported Devices & Models

1.Phone

Brand	Model
SAMSUNG	DEX, S8/S9/S10/S20 Series, Note 8/Note 9/ Note 10 Series
HUAWEI	Mate 10/Mate 20/Mate 30 Series, Mate RS, P20/P30/P40 Series
HONOR	NOTE 10, V20/V30 Series
OPPO	R17 Pro, Reno, Find
Razer	Razer Phone, Razer Phone 2
HTC	U Ultra
LG	G5, G6, G7
ASUS	ROG Gaming Phone
More Brands	Update Continuously

Laptop

Brand	Model
Apple	MacBook 12 in, MacBook Pro 2016/2017/2018/2019/2020 MacBook Air 2018/2019/2020, iPad Pro 2018/2019/2020
Google	ChromeBook Pixels, PielBook Pen
Lenovo	Savior Y7000, Savior Y7000P, Savior Y9000K, YOGA 6 Pro, ThinkPad X1 Carbon, Yoga 5 Pro, Miix 720
DELL	G3 Series, G5 Series, G7 Series, Inspiron 5000, Inspiron 7000, XPS13, XPS15, XPS17
HP	EliteBook 1050 G1, EliteBook Folio G1, Omen 4 Pro, Pavilion X2
Microsoft	Surface Book/Book2/Book3, Surface Laptop2/3, Surface Pro4/5/6/7, Surface Go/Go2
ASUS	ZenBook 3, ZenBook 3 Pro, ZenBook X Series, U4100UN, U5100UQ, ROG Series, U306, U321 Series
HUAWEI	MateBook D, MateBook X, MateBook X Pro, MateBook E, MateBook 13, MateBook 14
Razer	Blade Stealth
More Brands	Update Continously

Care & Cleaning

1.Cleaning. Turn your monitor off and unplug the cable. Clean the monitor surface with a lint-free, non-abrasive cloth. Stubborn stains may be removed with a cloth dampened with mild cleaner.

2.Avoid using a cleaner containing alcohol or acetone. Use a cleaner intended for use with the LCD. Never spray cleaner directly on the screen, as it may drip inside the monitor and cause an electric shock.

The following symptoms are normal with the monitor:

1.You may find slightly uneven brightness on the screen depending on the desktop pattern you use.

2.When the same image is displayed for hours, an afterimage of the previous screen may remain after switching the image. The screen will recover slowly or you can turn off the Power Switch for hours.

3.When the screen becomes black or flashes, or cannot work anymore, contact our tech support to fix it. Do not repair the screen by yourself! (support@lepow.hk)

Contact Lepow

If you meet any question in using this monitor, feel free to contact us for qucik response and professional tech support.



Official Website

www.ilepow.com



Tech Support

support@lepow.hk [24/7 service]



Toll-Free

+1-877-971-0118

[Mon-Fri, EST: 9:00-17:00 / PDT: 06:00-14:00]



Facebook

<https://www.facebook.com/lepowofficial>

Notices

- Before setting up this Type-c Portable Display, carefully read all the documentation that came with the package.
- To prevent fire or shock hazard, never expose this Type-c Portable Display to rain or moisture.
- Never try to open this Type-c Portable Display cabinet.
- Before using this Type-c Portable Display, make sure all cables are correctly connected and the power cables are not damaged. If you detect any damage, contact our tech support (support@lepow.hk) immediately.
- Avoid dust, humidity, and temperature extremes. Do not place this

Type-c Portable Display in any area where it may become wet. Place this Type-c Portable Display on a stable surface.

- Never push objects or spill liquid of any kind into the slots on this Type-c Portable Display cabinet.
- If you encounter technical problems with this Type-c Portable Display, contact our tech support (support@lepow.hk) immediately.

After-sales Service

Scan here to contact us
[24Hrs Online]



<https://lepow.afterservice.vip> 