
USER MANUAL

KingSlim D4 Dash Cam

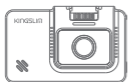
V1.0

KINGSLIM

CONTENTS

What's in the Box	1
Camera Overview	2
Installation	4
Formatting the microSD Card	7
Starting Video Recording	8
Icon Introduction	8
Setup Menu	9
Gestures	13
Switching Recording Display Modes	14
Using the "Roadcam" App	14
Specifications	17
Caution	18
Contact Us	18

WHAT'S IN THE BOX



D4 Dual Dash Cam * 1



Waterproof
Rear Camera * 1



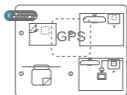
GPS Bracket * 1



7m Rear Camera
Extension Cable * 1



Car Charger with 3.5m
Power Cable * 1



Static Sticker * 2



Screws * 2



Double-sided Adhesive
Tape for Rear Camera * 4



Double-sided Adhesive
Tape for GPS * 2



Car Crowbar * 1

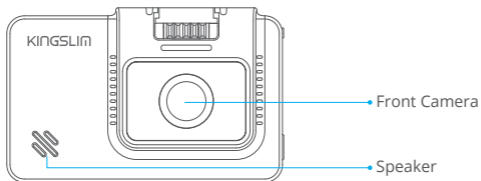
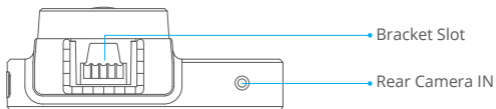


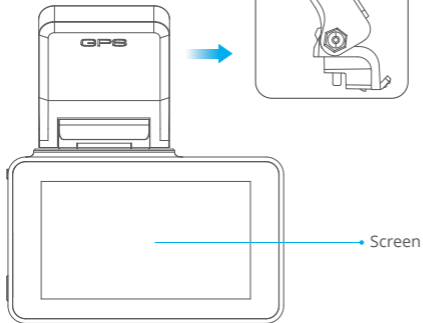
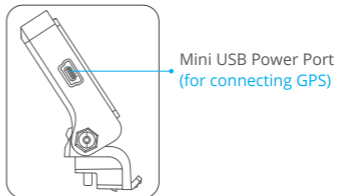
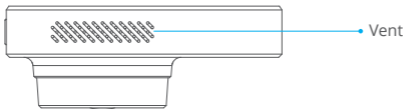
Cable Clips * 5



Quick Start Guide * 1

CAMERA OVERVIEW

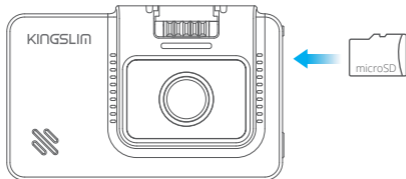




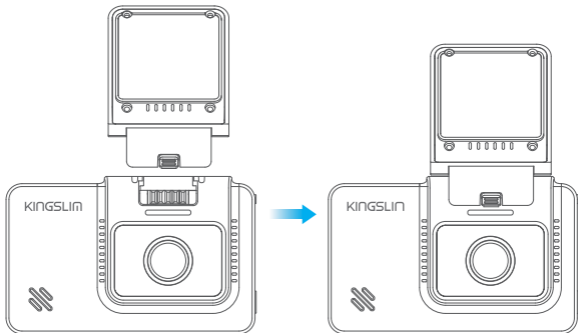
INSTALLATION

1. Insert the microSD card.

Warm Tips: A Class 10 or above microSD card is highly recommended for the D4 dash cam (microSD card is not included). D4 dash cam supports an up to 256GB microSD card. Please format your card in the camera before using this dash cam. Do not remove or insert the microSD card when the dash cam is turned on. This may damage the microSD card.



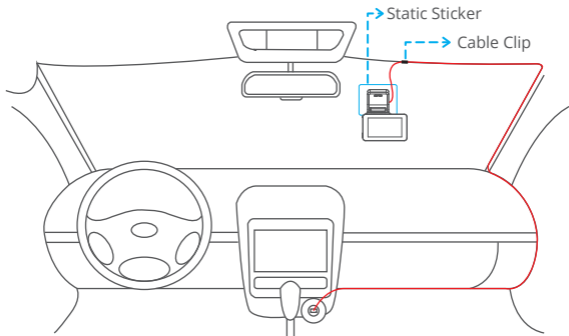
2. Insert the bracket into the bracket slot.



3. Install the D4 dash cam on the windshield.

- ① Clean the windshield with a dry cloth.
- ② Take off the film of the static sticker, apply the static sticker to the windshield and make sure there is no air inside.
- ③ Peel off the film on one side of the double-sided adhesive tape and apply the adhesive tape to the D4 dash cam.
- ④ Peel off the other film on the adhesive tape, press the D4 dash cam to secure it on the static sticker. (If you want to remove the dash cam, please take off the static sticker.)

Note: You can stick the dash cam on the windshield without the static sticker.



4. Adjust the viewing angle accordingly.
5. Connect the USB power cable into the USB power port of D4 Dash Cam, then plug the car charger into the cigarette lighter of your car.
6. Connect the rear camera with the extension cable into D4 Dash Cam to check whether the rear camera works well.

7. Install the Rear Camera.

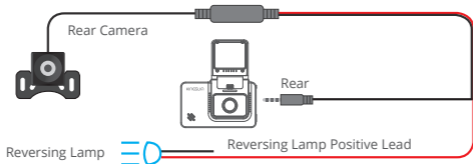
Position 1: Install the rear camera on the rear windshield. The installation is easier.



Position 2: Install the rear camera near the license plate. Position 2 is highly recommended. The rear image is crisp and clear for both rear viewing and reversing guide.



To use the reversing function, please install the rear camera in position 2, then connect the red trigger wire of the rear camera extension cable to the positive lead of the vehicle reversing lamp.



Note:

- ① Pay attention to the connector position when connecting the rear camera with the extension cable, please refer to the below details.



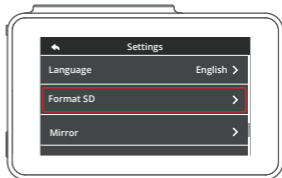
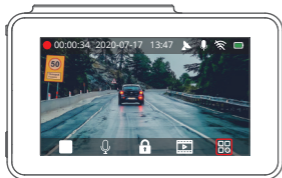
- ② Please clean the position to ensure the adhesive quality before installing the rear camera.
- ③ Please clean the rear windshield regularly to ensure the image quality if you choose the position 1.
- ④ If you choose the position 2, you can install the rear camera with the included adhesive stickers or screws.

8. Use the crowbar to hide the cables.

FORMATTING THE MICROSD CARD

Please format your microSD card in the camera before using this dash cam and use a high-speed microSD card of Class10 or higher.

1. Tap the setting icon to enter the Settings page.
2. Select "**Format SD**", then tap the "**Confirm**" icon. Wait a few seconds to finish the formatting and the system will exit automatically.

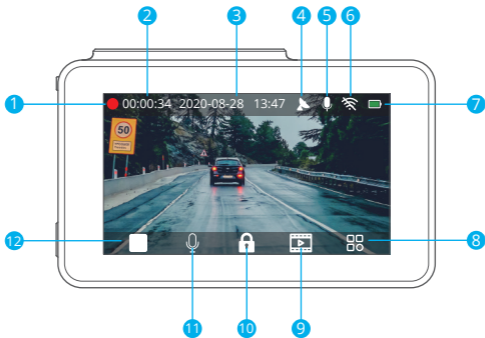


STARTING VIDEO RECORDING

1. After finishing formatting, connect a car charger and start the car engine, the device will automatically turn on and begin recording.
2. Loop recording is already enabled on the D4 dash cam, the default setting is 3 mins.
3. G-sensor is already enabled on the D4 dash cam, the default setting is low. If an impact or sudden braking is detected, it will automatically start recording and save footage to either the "Front Urgent Album" or "Back Urgent Album" folder.

ICON INTRODUCTION

The main interface



- | | |
|------------------------|------------------------------|
| ① Recording indicator | ⑦ Power status |
| ② Video time | ⑧ Settings |
| ③ Date/Time | ⑨ Album |
| ④ GPS | ⑩ Emergency recording/Wifi |
| ⑤ Microphone indicator | ⑪ Audio Record (Mute/Unmute) |
| ⑥ Wifi indicator | ⑫ Stop/Start recording |

SETUP MENU

1. Resolution

You can choose front camera resolution.

Options: 4K25/2K30

Default Setting: 4K25

The rear camera resolution is 1080P.

2. Video Encode

H.265 can minimize the footage size, meaning you can store more video files in the microSD card. H.264 has better compatibility.

Options: H.264/H.265

Default Setting: H.264

3. Screen Dormant

The screen will be turned off automatically after the time you set.

After turning off, the screen will reduce power consumption. The camera still works while the display screen is turned off. Just click the screen and it will turn on.

Options: Off/1MIN/3MINS

Default Setting: 1MIN

4. Antiflicker Mode

Choose the right frequency to avoid flickering. This should be based on your local AC parameters.

Options: 60Hz/50Hz

Default Setting: 60Hz

5. Sensitivity

When the sensitivity mode is turned on, if an impact or sudden braking is detected, it will automatically start recording and save content. The videos will be locked and never be overwritten by new files. The higher the sensitivity level, the easier it is to trigger the emergency recording.

Options: Off/Low/Middle/High

Default Setting: Low

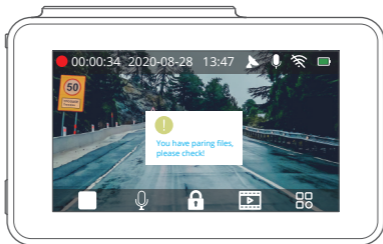
6. Parking

The camera will be turned on automatically and start the 20s recording and lock if there is an impact to the car during parking. The higher level you select, the easier it is to trigger the recording.

Options: Off/Low/Middle/High

Default Setting: Off

Note: In parking mode, the screen will not display and the working indicator will be flickering while recording is in progress. When the dash cam is on, the message box is shown on screen.



7. Date Format

Set the format you prefer.

Options: YY-MM-DD/DD-MM-YY/MM-DD-YY

Default Setting: YY-MM-DD

8. Audio

Sound will be recorded simultaneously with the video.

Options: On/Off

Default Setting: On

9. Volume

Adjust the volume in the playback video.

Options: Mute/Low/Middle/High

Default Setting: Middle

10. Loop Recording

The files will be saved every 3 MIN if you choose the 3 MIN option. When the microSD card is full, the new files will cover the old one if loop recording is on. If it is off, the camera will not record anymore when the card is full. You will then need to format the SD card or change to a new one.

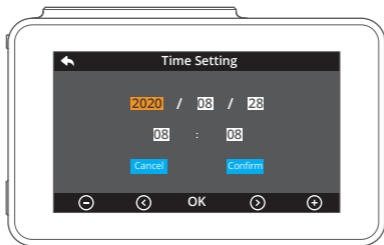
Options: Off/1Min/3Min/5Min

Default Setting: 3Min

11. Set Time

Set the date and time manually.

Note: If you want to set the time manually, please turn off the time zone setting.



12. Time Zone Setting

Choose the time zone manually. The device will then display the time of the selected time zone.

Default Setting: OFF

13. Language

Options: English/简体中文/Français/日本語/Español/Deutsch/Italiano

Default Setting: English

14. Format SD

Format the microSD card.

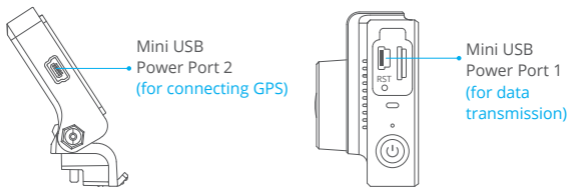
Note:

- ① All data will be deleted. Before formatting your microSD card, please remember to back up your important data on your other devices.
- ② When the microSD card is inserted for the first time, please format it in the camera to ensure that the microSD card is compatible with the camera.

15. GPS Info

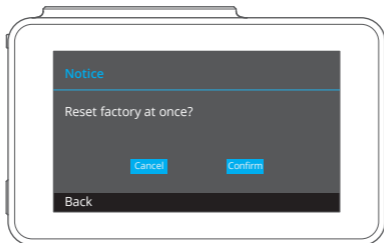
Check information related to your driving such as signal, speed, longitude, and latitude, etc.

Note: If you do not need GPS, please connect mini USB power port 1.



16. Reset System

The dash cam will be restored to factory settings.



17. About

Check the version of the camera.

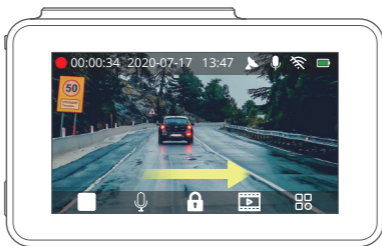
18. Album

You can check your videos and photos. If you want to download content, please use the “RoadCam” app, or back up data on your computer.

GESTURES

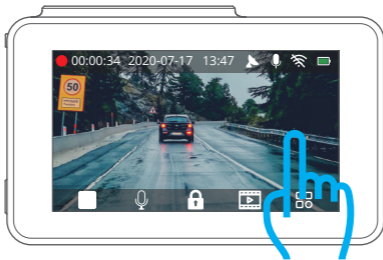
Taking a Photo

In the video recording mode, slide from left to right to take photos.



SWITCHING RECORDING DISPLAY MODES

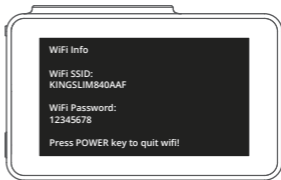
Click the right side of the screen to switch recording display modes.



USING THE "ROADCAM" APP

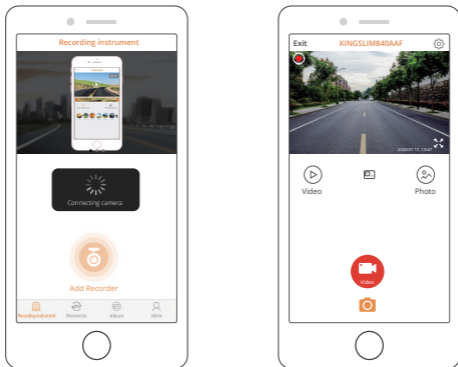
CONNECT WITH ON THE APP

1. Stop video recording on the dash cam.
2. Tap the Wifi icon on the dash cam.


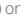



3. Go to your smartphone's Wifi settings and connect to the Wifi name that's shown on the dash cam. Enter the password and confirm the Wifi network.
4. Open the "RoadCam" app, tap "Add Recorder", wait a few seconds to enter the preview interface.
5. Tap the video or photo icon to control the dash cam, either recording videos or shooting photos.

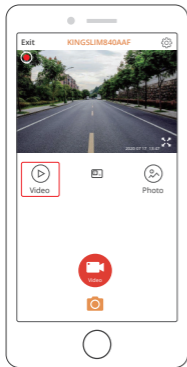
6. Tap the switch icon to switch to the front or rear camera display.



DOWNLOAD OR DELETE VIDEOS AND PHOTOS

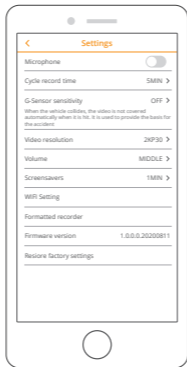
1. Tap the  icon to stop the recording.
2. Tap the  or  icon to check the videos or photos.
2. Tap "Select" and choose videos or photos that you want.
3. Tap the download or delete icon to download or delete.

Note: To exit the Wifi feature, please press the power button on the dash cam.



CHANGE RECORDING SETTINGS

You can change recording settings in the app.



SPECIFICATIONS

Front Camera: 5MP, f/1.8, 170° FOV

Rear Camera: 2MP, f/2.0, 150° FOV

Video: 4K+1080P@25fps/2.5k+1080P@30fps

Screen: 3-inch IPS touchscreen

Video Coding: H.264/H.265

Input: 5V DC

Working Temperature: -20°C~60°C (-4°F~140°F)

If your dashcam does not appear to be working properly, please follow these troubleshooting steps:

1. The dash cam can't record.

- Check whether your microSD card has enough space. Please back up any important data to other devices first, and then format the microSD card.
- Check if the loop recording in the settings menu is set to OFF.
Set "Loop Record" to 3 MINS.

2. When recording, it stops automatically.

At the time of recording, a large amount of high-definition video data is processed. Please use a high-speed microSD card of Class 10 or higher.

3. A "File Error" prompt appears when playing back pictures and videos.

Please use a genuine microSD card. Please format the microSD card.

4. The image is misty.

Ensure there are no fingerprints or other marks on the camera lens. Use a soft and dry cloth to clean the lens. Clean the front windshield.

5. Crashing

If your device crashes, use a sharp object to press the reset button to restart the device.

6. No sound on the video.

Ensure the audio recording mode is on.

7. The camera keeps turning on and off automatically.

Please charge the camera with the included car charger. Do not charge the battery via the USB data cable with other adapters.

CAUTION!

1. Please place your device in a secure place and prevent the lens from scratches or dirt.
2. Do not expose the device to rain, moisture, or water under any circumstance.
3. Avoid leaving the device in direct sunlight for extended periods of time.
4. Do not dismantle or expose the internal battery.

CONTACT US

For any inquiries with KingSlim products, please feel free to contact us, we will respond within 24 hours.

E-mail: cs@kingslim.net

Tel: 888-811-1140 (US) Mon-Fri (except holiday) 9am-5pm (EST)

Official website: www.kingslim.net

The microSD, microSDHC, microSDXC and SD marks and logos are trademarks of SD-3D, LLC.