



# QUICK START

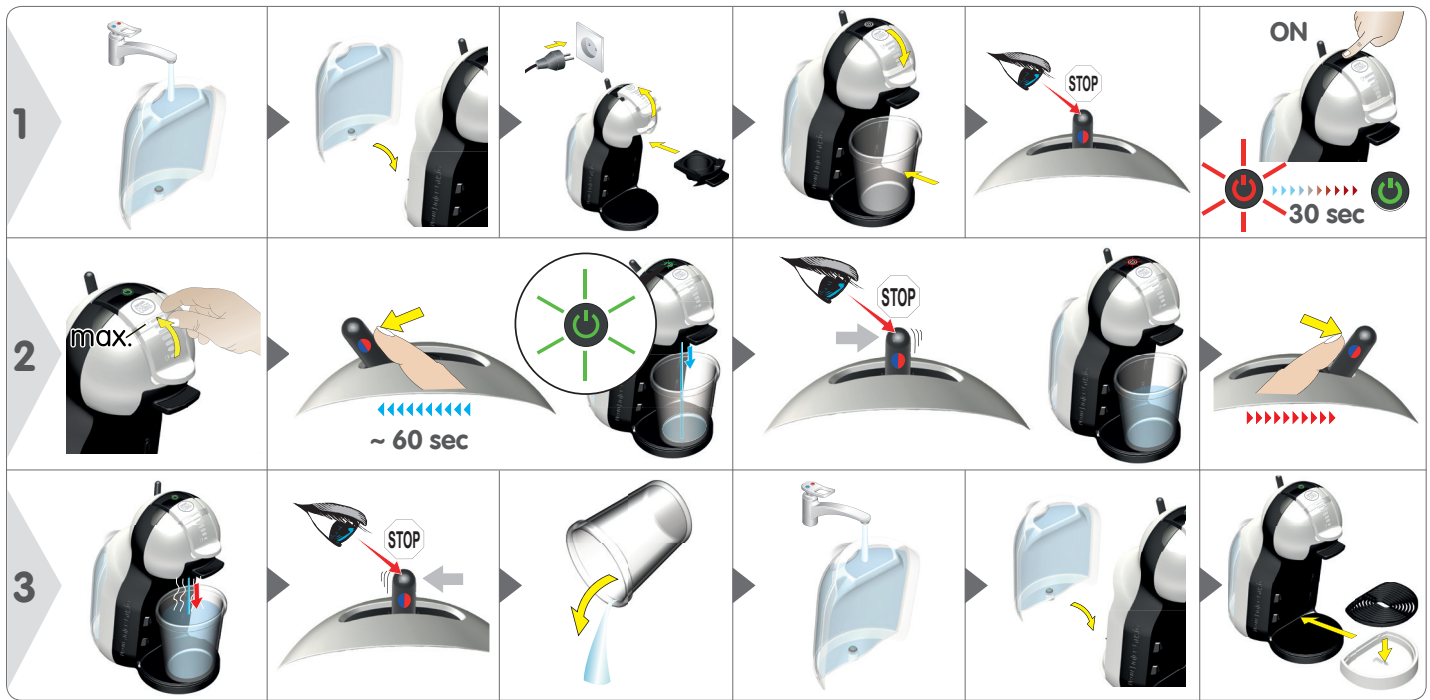


EN Read Safety Precaution booklet before first use.

ES Leer el folleto de precauciones de seguridad antes del primer uso.

EN First use

ES Primera puesta en funcionamiento



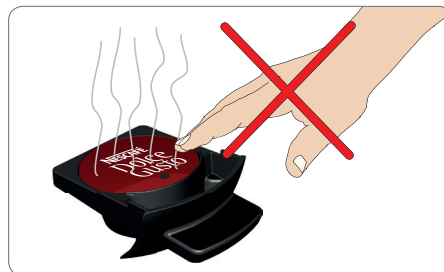
EN Preparing a beverage

ES Preparación de una bebida



EN Recommendations for safe use

ES Consejos para un uso seguro

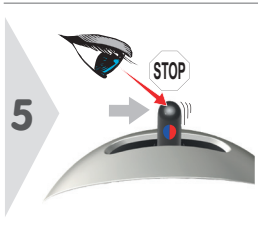
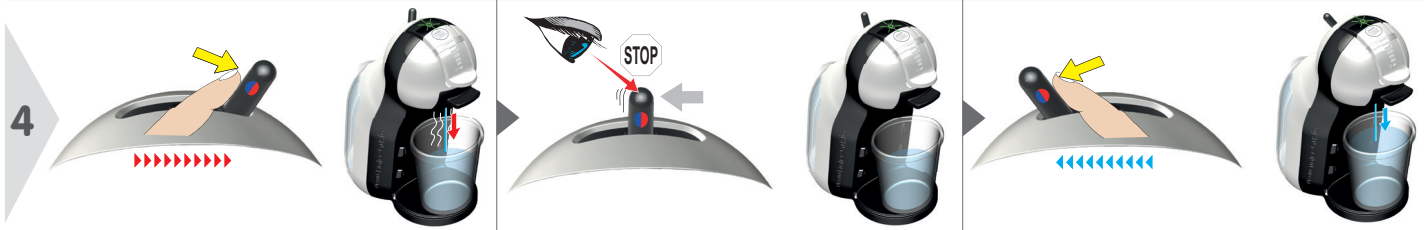
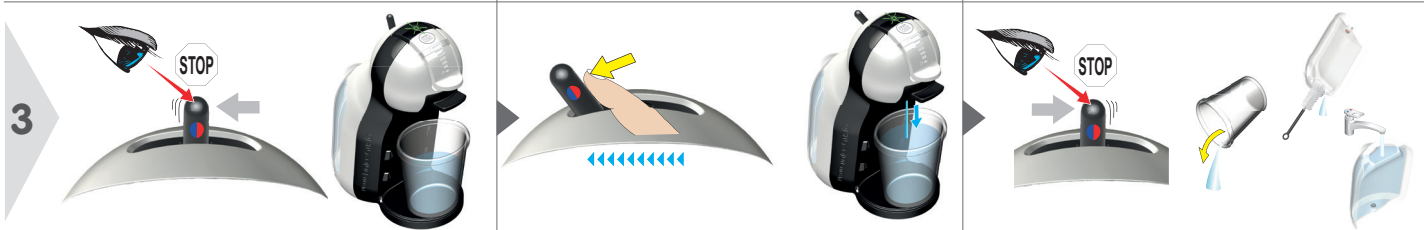


⚠️ EN Follow recommended serving sizes on capsules packs.  
 ES Respete los tamaños de servicio recomendados en los paquetes de cápsulas.

EN Cleaning

ES Limpieza










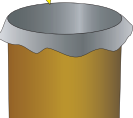




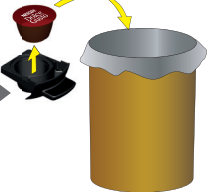





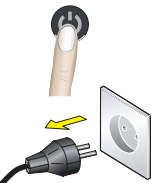

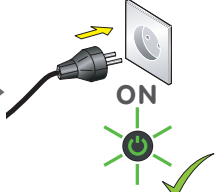

EN Descaling at least every 3 - 4 months, depending on water hardness in your region

ES Descalcificación al menos cada 3 - 4 meses, dependiendo de la dureza del agua de su región



	<p>1</p>    
	<p>2</p>  <p>  <b>High pressure</b>  <b>Alta presión</b> </p>  <p>20 min</p>  

				
---	---	---	--	---

	<p>OFF</p> 	 <p>20 min</p>	 <p>ON</p>	<p><a href="http://www.dolce-gusto.com">www.dolce-gusto.com</a></p> 
--	---	--	---	--

 <p>USER MANUAL Manual de usuario</p>	
 <p><a href="http://www.dolce-gusto.com">www.dolce-gusto.com</a></p>	



NESCAFÉ® DOLCE GUSTO®



## HOTLINES

<b>AL</b> 0842 640 10	<b>ID</b> 001803657121	<b>NL</b> 0800-3652348
<b>AR</b> 0800-999-8100	<b>IE</b> 00800 6378 5385	<b>NO</b> 800 80 730
<b>AT</b> 0800 365 23 48	<b>IT</b> 800365234	<b>PE</b> 80010210
<b>BE</b> 0800 93217	<b>JP</b> 81-35651-6848 (machines)	<b>PH</b> 898-0061
<b>BG</b> 0 800 1 6666	81-35651-6847 (capsules)	<b>PL</b> 0800 174 902
<b>BR</b> 0800 7762233	<b>KO</b> 080-234-0070	<b>PT</b> 800 200 153
<b>BS</b> 0800 202 42	<b>KS</b> 0842 640 10	<b>QTR</b> +97148100081
<b>CA</b> 1 888 809 9267	<b>KWT</b> +97148100081	<b>RO</b> 0 800 8 637 853
<b>CH</b> 0800 86 00 85	<b>KZ</b> 8-800-080-2880	<b>RU</b> 8-800-700-79-79
<b>CL</b> 800 4000 22	<b>LU</b> 8002 3183	<b>SE</b> 020-29 93 00
<b>CO</b> 01800-05-15566	<b>LT</b> 8 700 55 200	<b>SG</b> 1 800 836 7009
<b>CZ</b> 800 135 135	<b>LV</b> 67508056	<b>SK</b> 0800 135 135
<b>DE</b> 0800 365 23 48	<b>ME</b> 020 269 902	<b>SL</b> 080 45 05
<b>DK</b> 35460100	<b>MEX</b> 5267 3304 01800 365 2348 (Lada sin costo)	<b>SR</b> 0800 000 100
<b>EE</b> 6 177 441	<b>MK</b> 0800 00 200	<b>TH</b> 1-800-295588, 0-2657-8601
<b>ES</b> 902 102 706	<b>MT</b> 80074114	<b>TW</b> 0800-000-338
<b>FI</b> 0800 0 6161	<b>MY</b> 1800 88 3633	<b>UAE</b> 800 348786
<b>FR</b> 0 800 97 07 80		<b>UK</b> 0800 707 6066
<b>GR</b> 800 11 68068		<b>UKR</b> 0 800 50 30 10
<b>HK</b> 2179 8888		<b>US</b> 1-800-745-3391
<b>HR</b> 0800 600 604		
<b>HU</b> 06 40 214 200		



**EN** The guarantee does not cover appliances that do not work or do not work properly because they have not been maintained and/or descaled.  
**ES** La garantía no cubre los aparatos que no funcionan o no funcionan correctamente porque no han sido mantenidos y/o descalcificados.