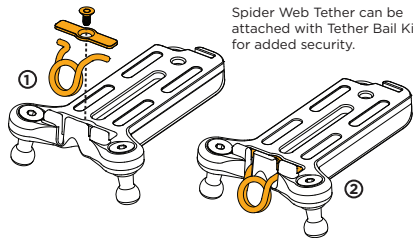
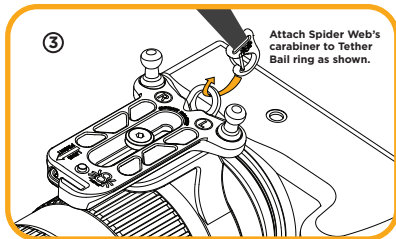


USE WITH:  
**SPIDER WEB & TETHER BAIL KIT**  
(SOLD SEPARATELY)



Spider Web Tether can be attached with Tether Bail Kit for added security.

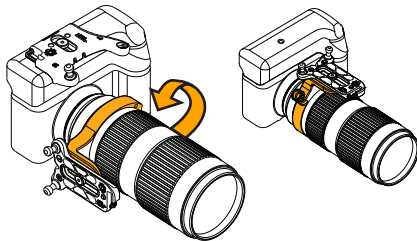


Attach Spider Web's carabiner to Tether Bail ring as shown.

USE WITH:  
**VERTICAL CAMERA GRIP**

When operating with BOTH a SpiderPro Plate and Lens Collar Plate with a vertical grip, **rotate your lens collar 90 degrees** as shown.

We recommend using the Lens Collar Plate only when shooting with longer lenses.



**WARRANTY INFORMATION**

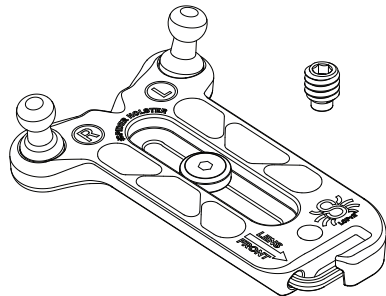
Register your purchase and activate your limited lifetime warranty at:  
<https://www.spiderholster.com/register>

Our warranty can be found at:  
<https://www.spiderholster.com/warranty>

U.S. AND INTERNATIONAL PATENTS PENDING  
COPYRIGHT ©2019 SPIDER GEAR LLC.  
ALL RIGHTS RESERVED.



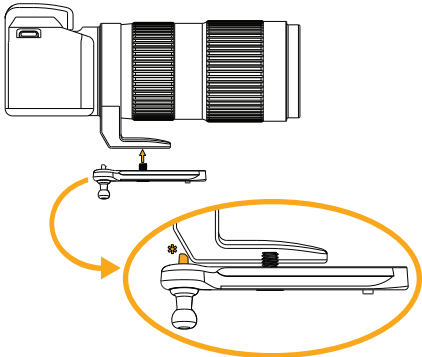
**Lens Collar Plate v2**  
for Zoom and Telephoto Lenses



Compatible with all SPIDER Camera Holsters

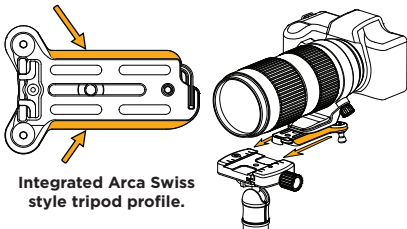
## HOW TO INSTALL: LENS COLLAR PLATE v2

Lens Collar Plate has an **anti-rotation feature** to keep it aligned with your lens.



\*Lens Plate **RAISED FEATURE** must be in contact with the back of the lens collar.

## ARCA SWISS COMPATIBILITY

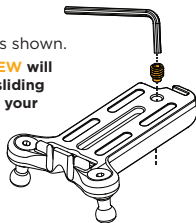


Integrated Arca Swiss style tripod profile.

## HOW TO INSTALL: SAFETY STOP SCREW

Use wrench to install as shown.

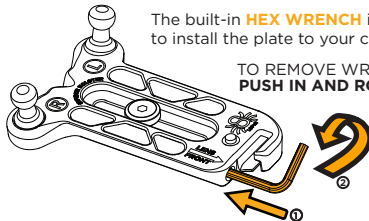
The **SAFETY STOP SCREW** will prevent the accidental sliding of the tripod plate from your Arca Swiss tripod.



## BUILT-IN HEX WRENCH

The built-in **HEX WRENCH** is used to install the plate to your camera.

TO REMOVE WRENCH:  
**PUSH IN AND ROTATE**



## UNIVERSAL TRIPOD COMPATIBILITY

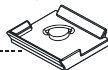
**SPIDER**  
ArcaSwiss  
Plate



**SPIDER**  
ArcaSwiss +  
Manfrotto Plate



**ANY**  
Third Party  
Tripod Plate



Attach your tripod plate to the universal 1/4"-20 connection on the Lens Collar Plate v2.

